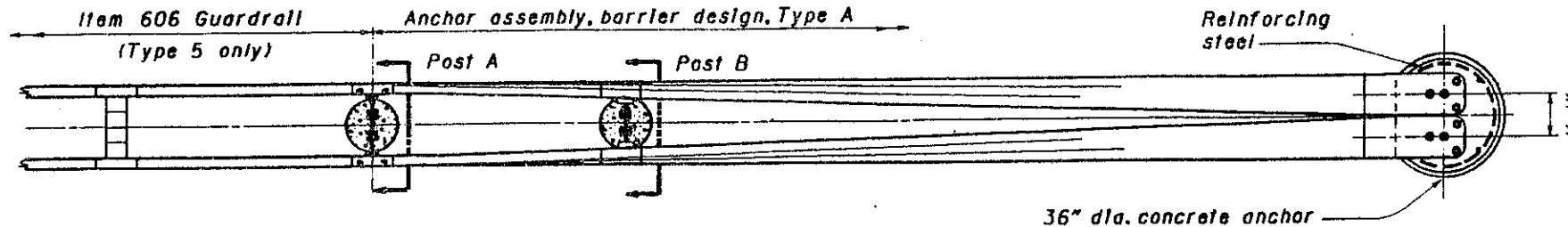
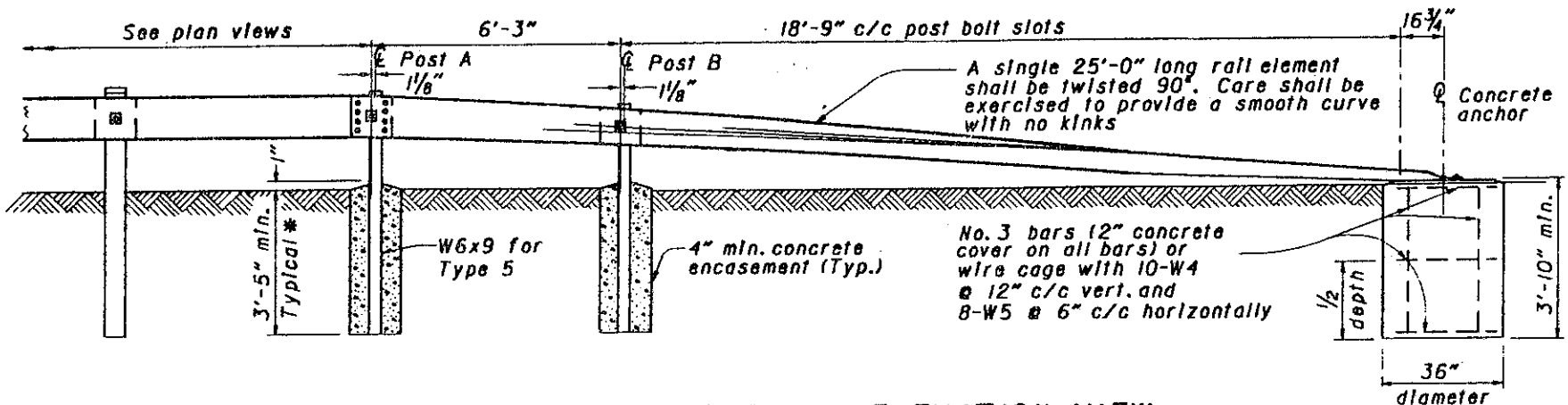


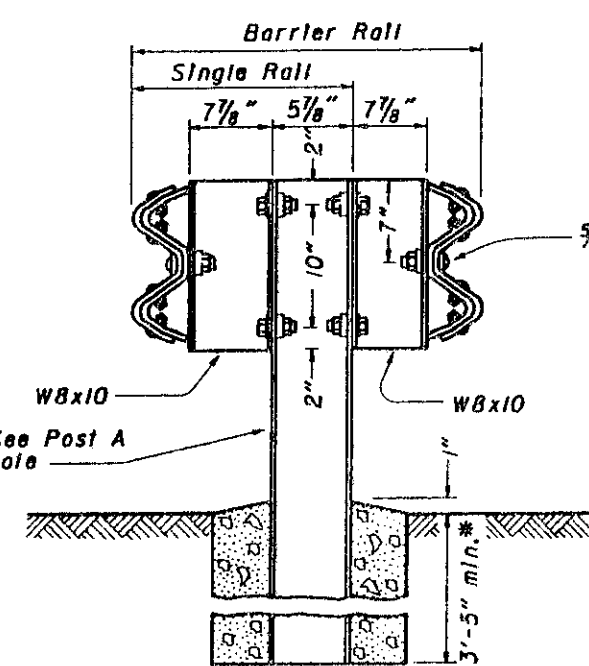
SINGLE RAIL - PLAN VIEW



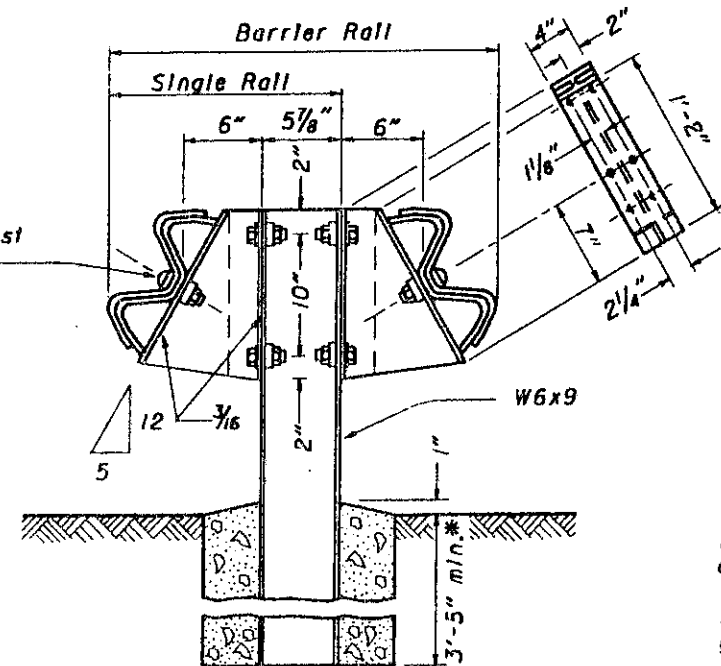
BARRIER RAIL - PLAN VIEW



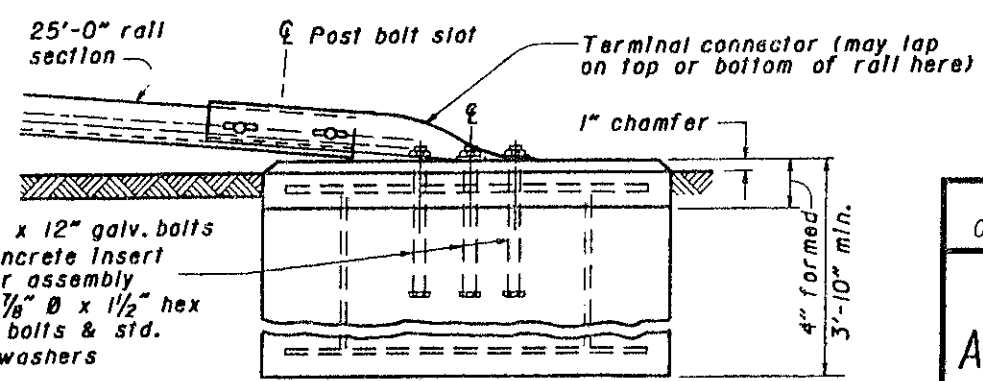
SINGLE & BARRIER RAIL - ELEVATION VIEW



POST A



POST B



CONCRETE ANCHOR

NOTES

GENERAL: For details not shown, see Std. Const. Dwgs. GR-1.1, GR-1.2 and other Standard Construction Drawings pertaining to specific guardrail type. All steel parts shall be galvanized.
The 1'-6" flare offset from normal face of rail, shown in the plan view (for single rail installations), will be utilized only where shoulder width is insufficient for providing standard offsets.

SPACERS for Post B shall be made of 3/16" steel plate as per 710.15, or two sections of W6 x 9 or W8 x 10 cut in the web (see dashed line) and welded together on both sides.
All steel spacers and posts may be provided with additional bolt holes so that these items will not be required to be made right and left handed.
Spacers shall be fastened to their posts with two 5/8" hexhead bolts and nuts with standard washers on both sides.

ALL WASHERS INDICATED on this drawing are standard galvanized steel of the appropriate size.

CONCRETE ANCHOR: Form top 4" of anchor and slope the top to conform to slope of the adjacent ground. The 36" diameter anchor may be replaced by a 2'-6" square anchor at the contractor's option.

POST A: Rail details are shown for Type 5 guardrail. Where anchor assembly is attached to Type 4 guardrail, Post A shall be a standard Type 4 line post set in concrete, and the spacer block shall be omitted. Post bolt shall be 5/8" diameter.

* **FOR SINGLE RAIL INSTALLATIONS,** see Standard Construction Drawing GR-1.2 for additional post embedment details.

BUREAU OF LOCATION AND DESIGN OHIO DEPARTMENT OF TRANSPORTATION	
TYPE A ANCHOR ASSEMBLY	
STANDARD CONSTRUCTION DRAWING	GR-4.1
APPROVED <i>D.K. Hulman</i> ENGR., L. & D.	
DATE	5-6-91