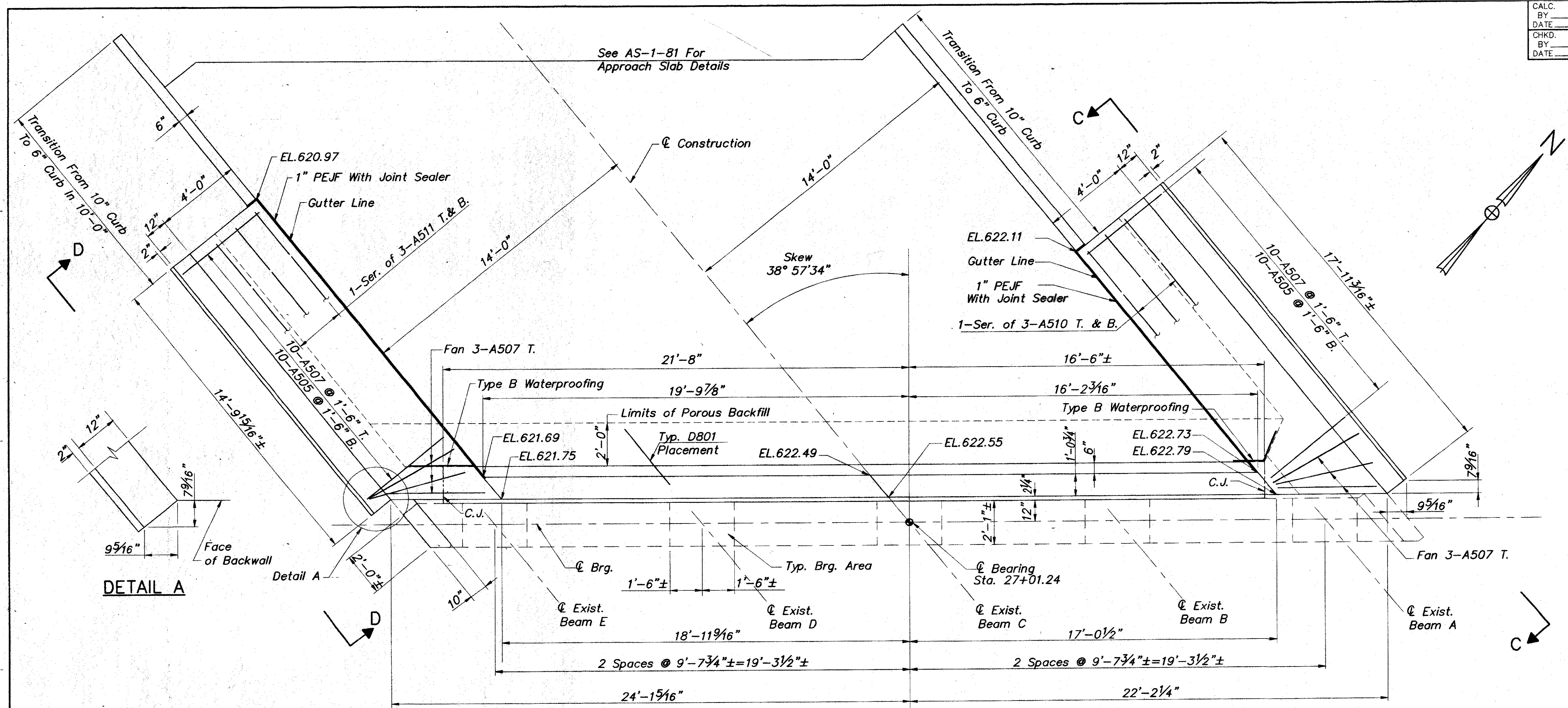


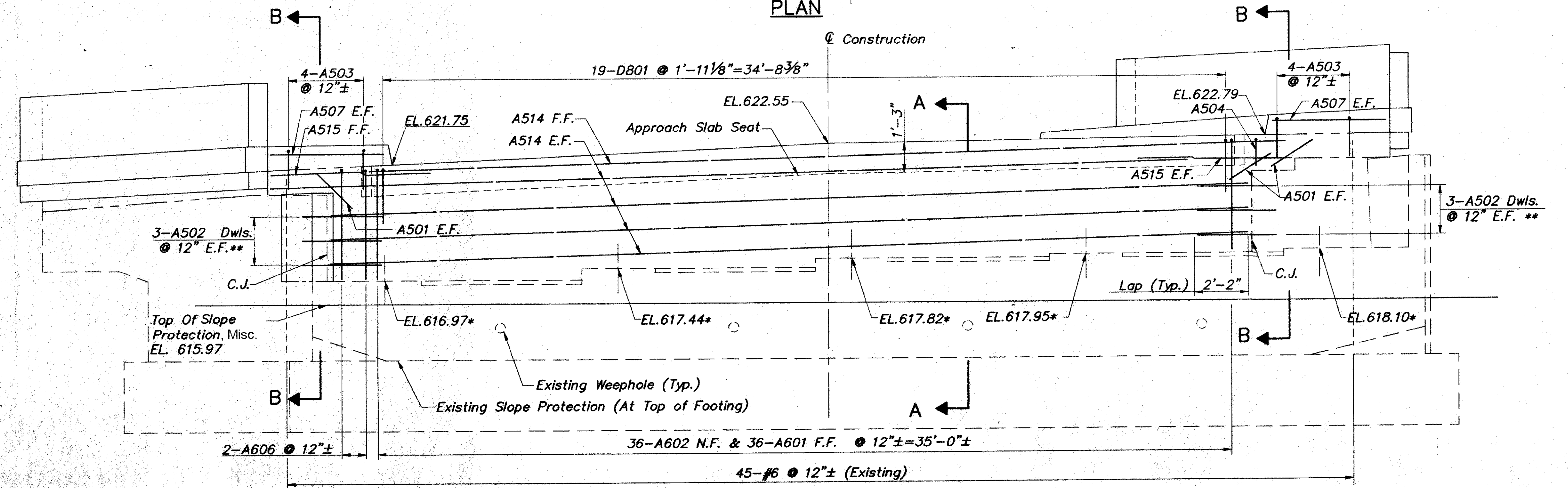
CALC. BY _____
 DATE _____
 CHKD. BY _____
 DATE _____

LAK - 2 - 4.51

OHIO
 FHWA 5 REGION
 30
 40



PLAN



ELEVATION

- NOTES:
1. For Rear Abutment Demolition and Repair Drawings, See Sheet 7/20.
 2. For Wingwall Elevations C-C And D-D, See Sheet 11/20.
 3. For Sections A-A and B-B, See Sheet 11/20.
 4. Type B Waterproofing Shall Be 3'-0" Wide, Centered On The Vertical Joints Between New And Existing Concrete.
 5. Notation: C.J.-Construction Joint; Sta.-Station; PEJF-Preformed Expansion Joint Filler; Dwls.-Dowels; EL.-Elevation; Exist.-Existing; Typ.-Typical; Brg.-Bearing; E.F.-Each Face; F.F.-Far Face; T. & B.-Top and Bottom; Ser.-Series.

CT Consultants, Inc.
 Engineers • Architects • Planners
 Willoughby • Mentor • Columbus • North Canton • Centerville 10/20

**REAR ABUTMENT
 PLAN & ELEVATION
 BRIDGE NO. LAK-2-0451
 S.R. UNDER STEVENS BLVD.
 LAKE COUNTY**

DESIGNED	DRAWN	TRACED	CHECKED	REVIEWED DATE	REVISED
I.A.S.	I.A.S.	I.A.S.	J.P.R.	J.E.A. 2-25-94	

* Existing Bearing Seat Elevations Observed During Field Survey.
 ** Drill Dowel Holes 4" Clear of Surface, 12" Deep.