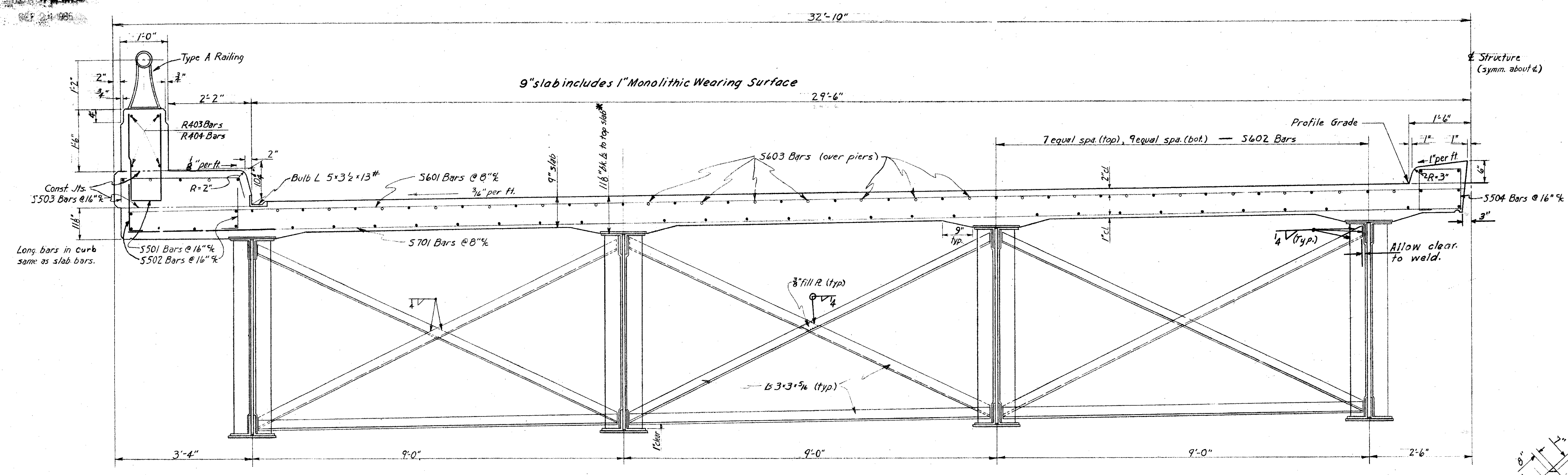
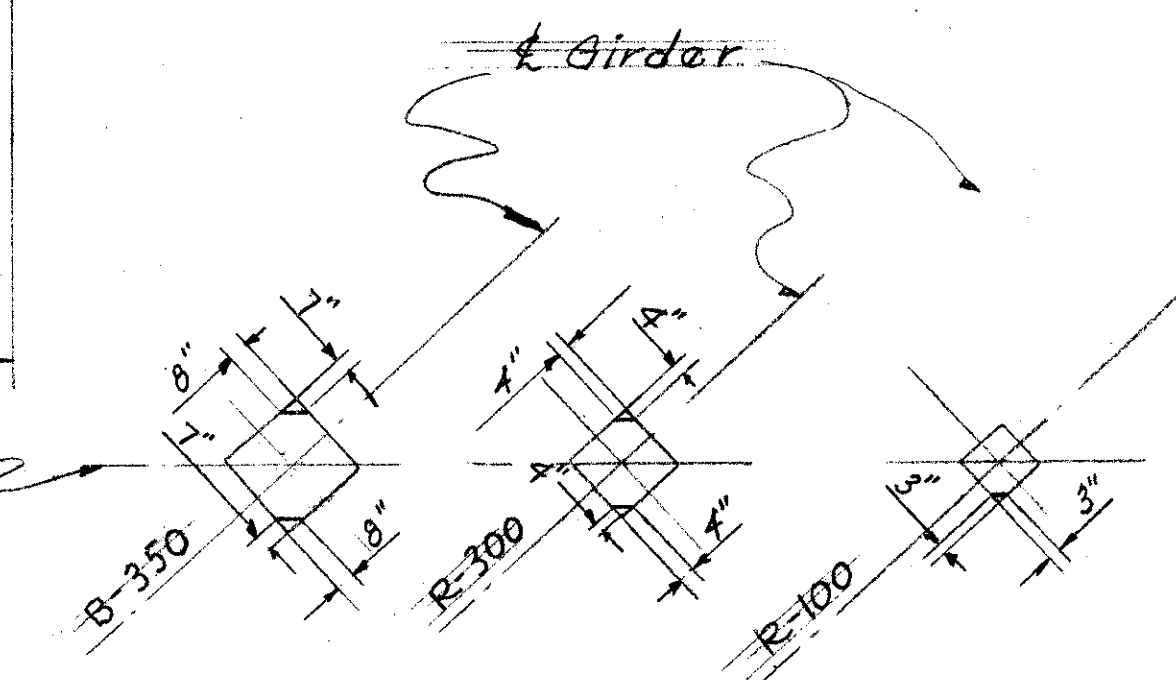


LAKE COUNTY
SEC. LAK-2-442



DECK CROSS SECTION
Concrete Class 'C'



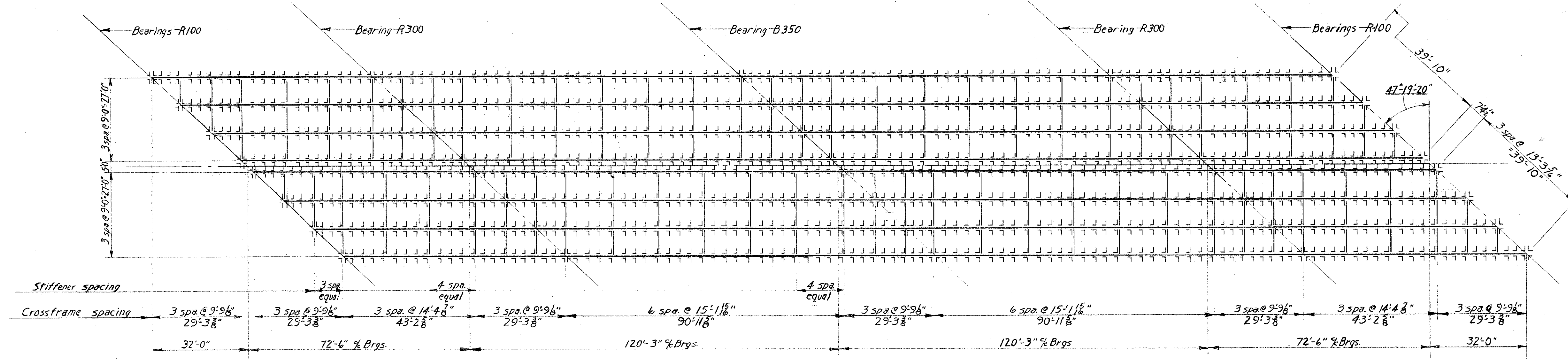
BASE PLATE
See sheet no. 277 for anchor bolt layout.

Note: Bearing B-350 shall be a bolster as shown on Dwg. RB-1-55, revised 2-2-59, with the following dimensions:

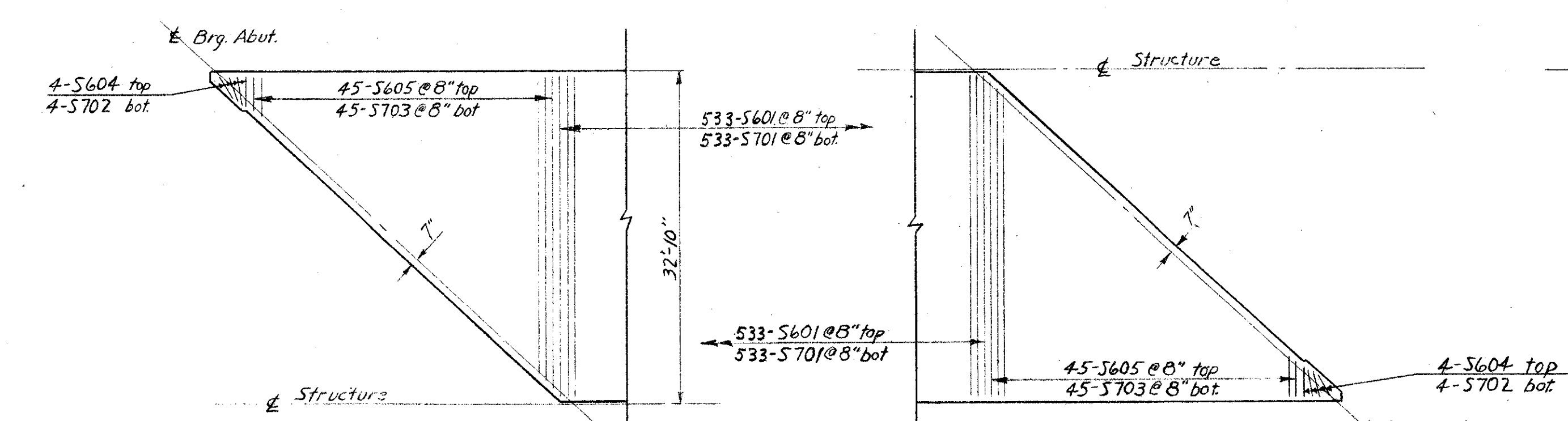
No.	A	B	C	D	F	G	H	K	L	M	R	T	Y
B-350	3 1/2	25	3 1/2	3 3/4	1	14	20 1/8	15	30	27	13 1/2	3 1/2	1 1/4

PAINTING: After erection and after the shop paint has been cleaned and, where necessary, repainted in accordance with Sec. 8.04, an additional coat of the same paint as used in the shop shall be applied over the outside face of the outside of the steel girders, and all sides of the bottom flange.

* This is the nominal dimension. The quantity of deck concrete to be paid for shall be based on this dimension, even though deviation from it may be necessary because the top flange of the beam may not have the exact camber or conformation required to place it parallel to the finished grade.



STEEL FRAMING PLAN



PART PLAN
Transverse Reinforcement Placement

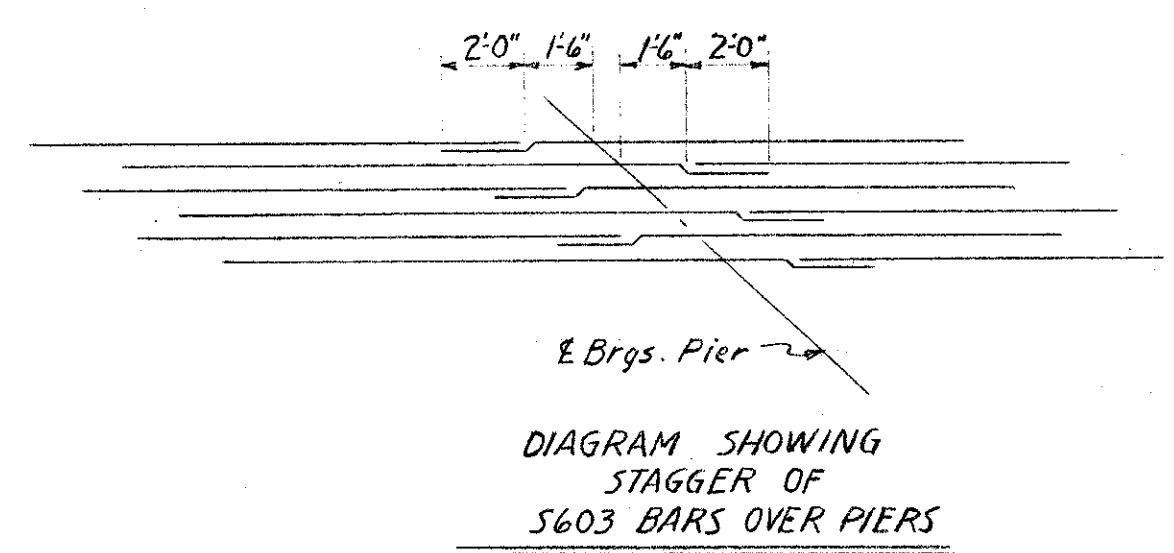


DIAGRAM SHOWING STAGGER OF S603 BARS OVER PIERS

PREPARED BY
CAPITOL ENGINEERING ASSOCIATES, DILLSBURG, PA.
FOR
STATE OF OHIO
DEPARTMENT OF HIGHWAYS
DIVISION OF DESIGN AND CONSTRUCTION
BUREAU OF BRIDGES

SUPERSTRUCTURE DETAILS
BRIDGE NO. LAK-2-0695
RELOC. S.R.2 UNDER S.R.306
LAKE COUNTY STA. 264 + 76.40

DESIGNED	DRAWN	TRACED	CHECKED	REVISED DATE	REVISED
	CWB				