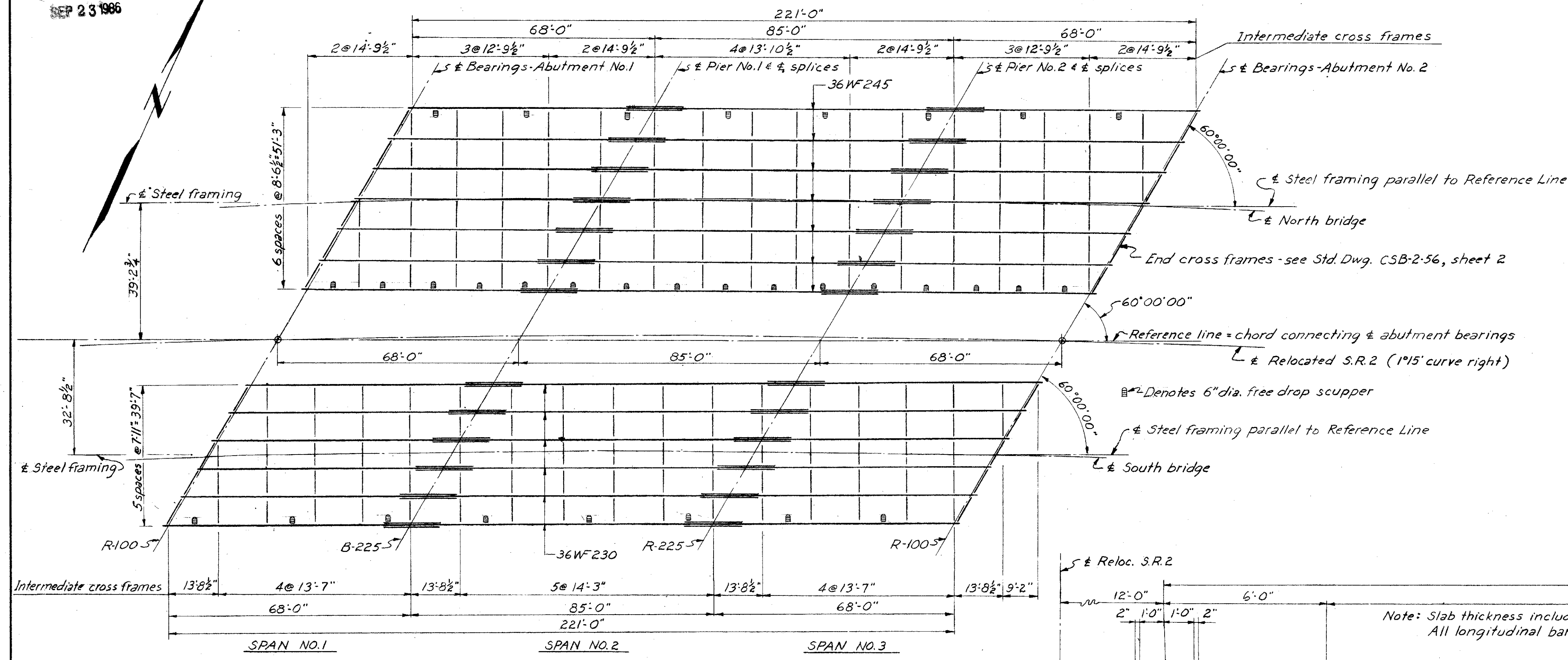


MICROFILMED
SEP 23 1986

FED. RD. DIVISION	STATE	PROJECT	
2	OHIO	F-U-329 (15)	

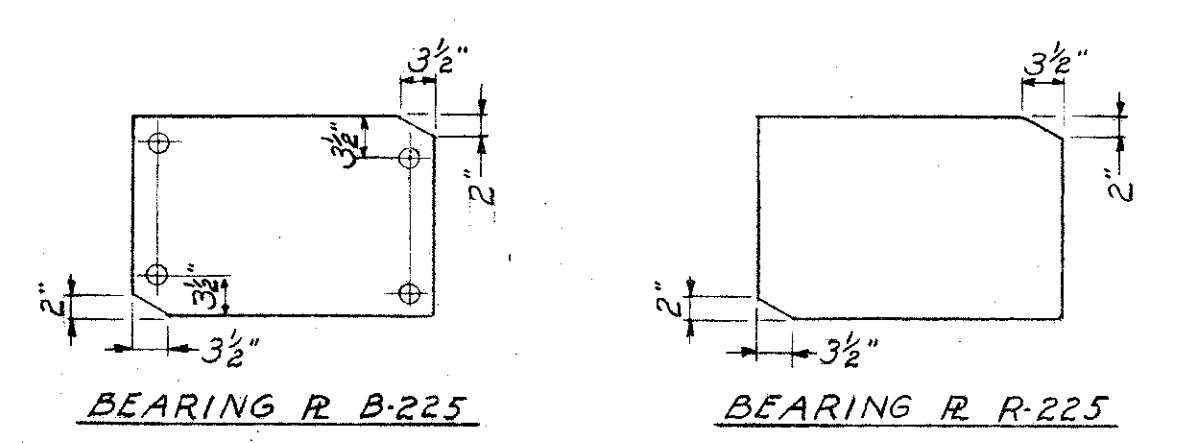
264
297

LAKE COUNTY
SEC. LAK-2-4.42

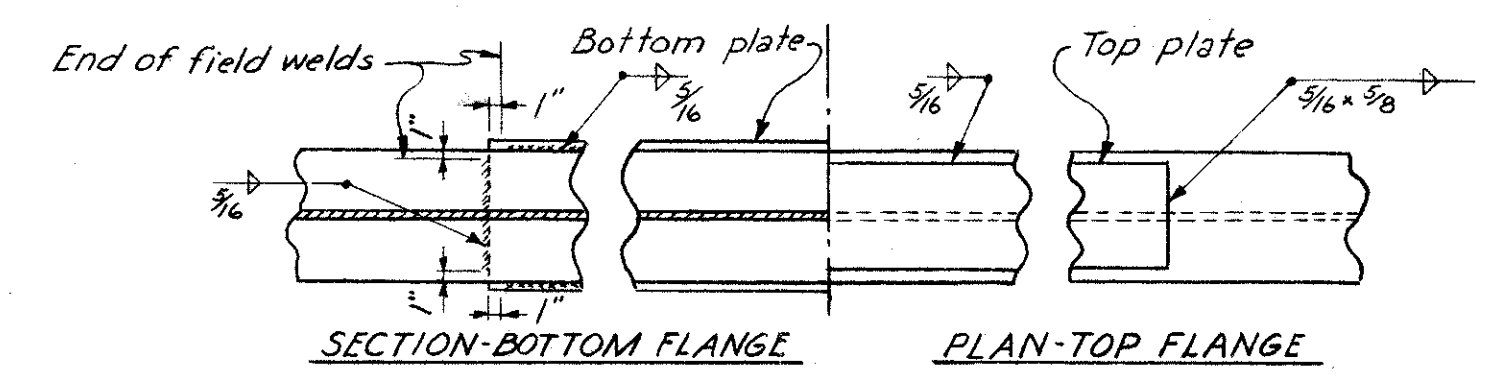
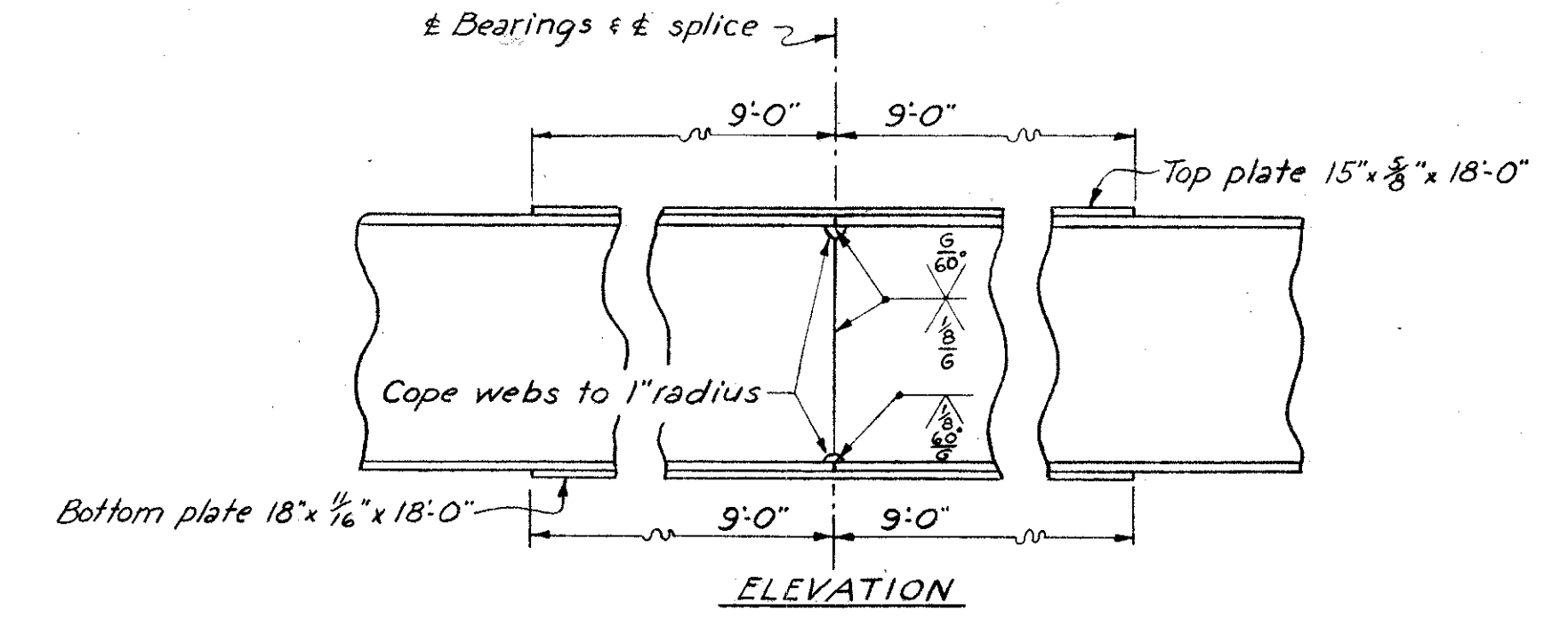


STEEL FRAMING PLAN

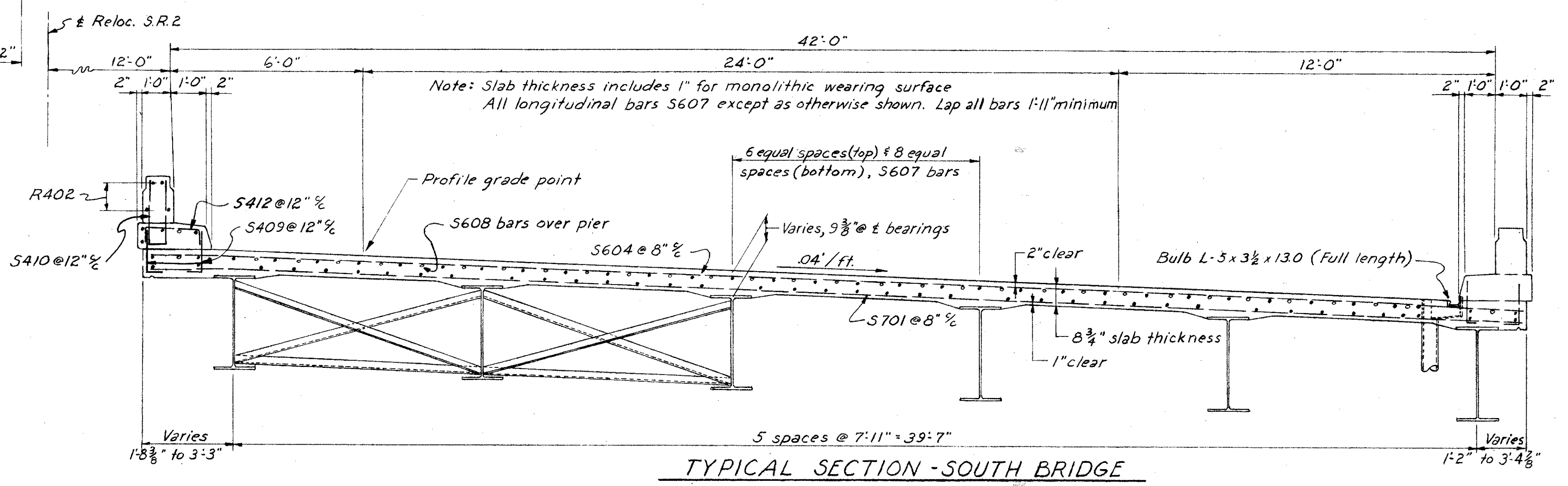
NOTE:
Dead load deflection of all beams = $\frac{5}{8}$ "
Any convexity of beams shall be placed upward.



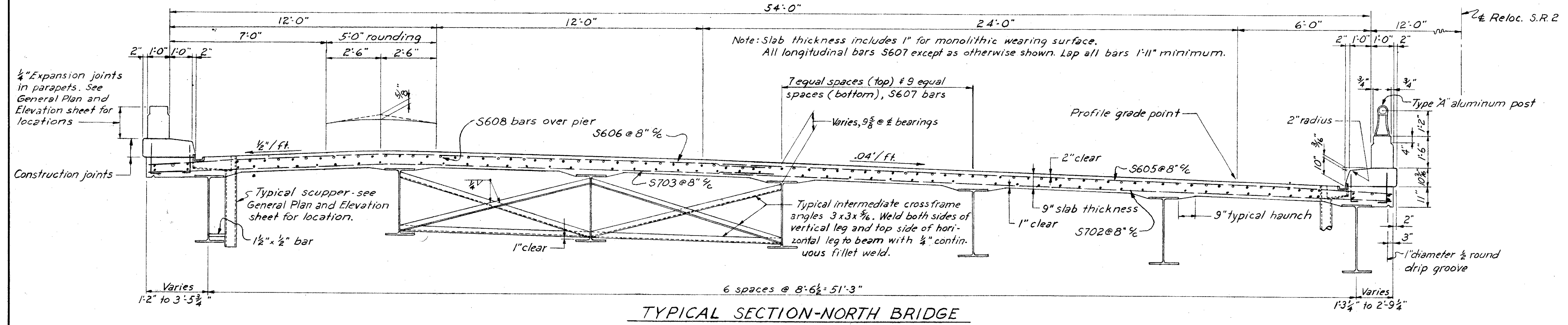
ALTERATIONS TO STANDARD BEARING PLATES
(See Standard Drawing RB-1-55 for details not shown)



TYPICAL SPLICE DETAILS-BOTH BRIDGES



TYPICAL SECTION - SOUTH BRIDGE



TYPICAL SECTION - NORTH BRIDGE

NOTE:
All details on Typical Section for both bridges are similar unless otherwise shown.

PREPARED BY CAPITOL ENGINEERING ASSOCIATES, DILLSBURG, PA. FOR						
STATE OF OHIO DEPARTMENT OF HIGHWAYS DIVISION OF DESIGN AND CONSTRUCTION BUREAU OF BRIDGES						
SUPERSTRUCTURE BRIDGE NO. LAK-2-0527 RELOC. S.R.2 OVER CHAGRIN RIVER LAKE COUNTY						
STA. 179+25.00						
DESIGNED	DRAWN	TRACED	CHECKED	REVISED DATE	REVISED	
JEM	JEM					