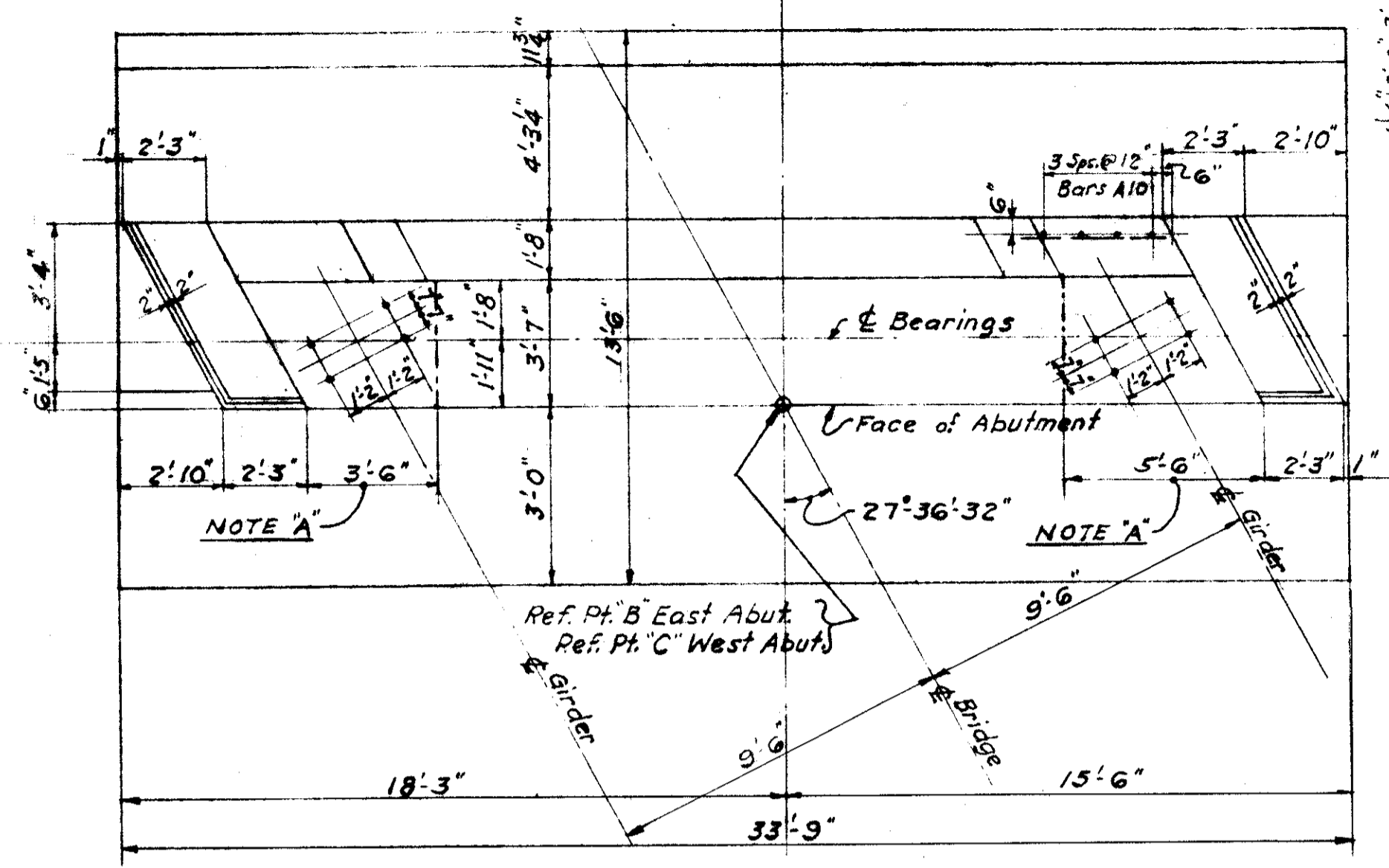


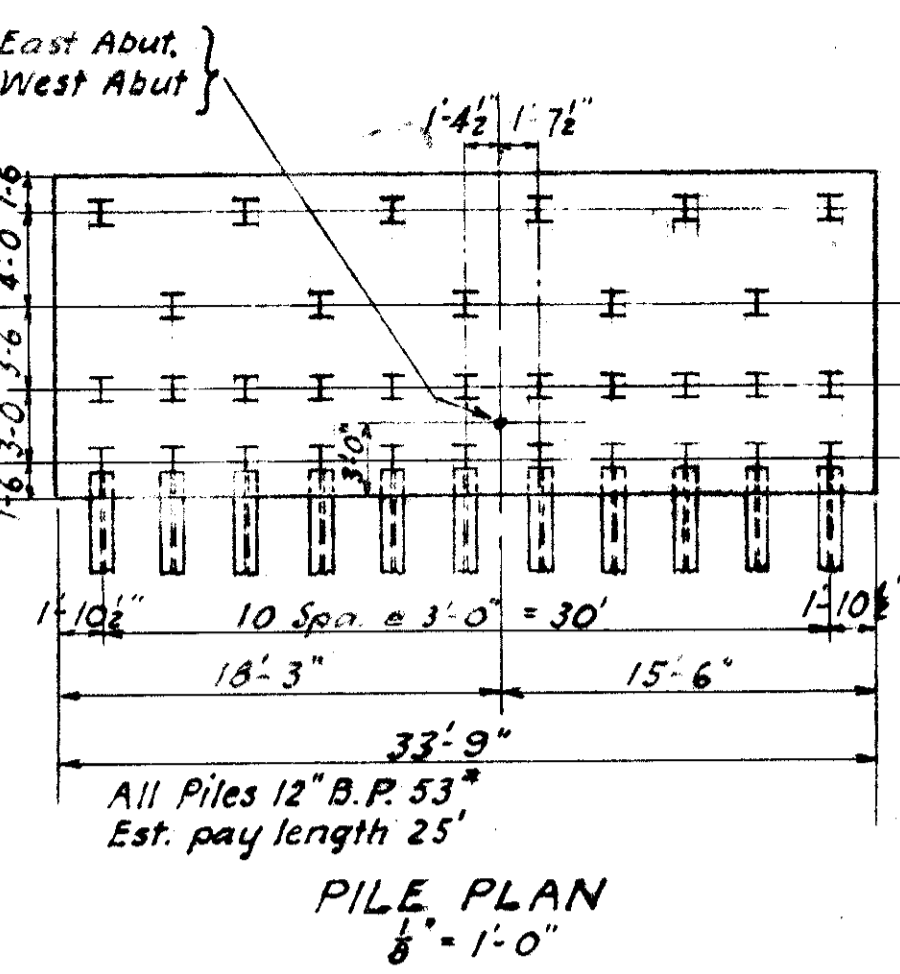
LAKE COUNTY  
SEC LAK-2-442

REINFORCING BARS - (2 ABUTMENTS)

MARK	Nº	SIZE	LENGTH	REMARKS
A1	66	7	9'-0"	Hook one end - Footing
A2	68	7	13'-9"	Hook one end - Footing
A3	22	6	33'-3"	Straight - Footing
A4	48	9	5'-0"	Straight - Footing
A5	16	5	9'-0"	Straight - Footing
A6	44	6	6'-0"	Straight - Dowels at Heel
A7	16	5	33'-3"	Straight - Heel & B'kwall
A8	32	5	17'-0"	Straight - Face of Abut.
A9	28	5	30'-6"	Straight - Backwall
A10	62	6	5'-0"	Straight - Pylons
A11	32	5	10'-0"	Straight - Dowels in Pylons
A12	60	5	4'-0"	Bent - Pylons
A13	28	5	12'-6"	Bent - Pylons
A14	8	5	8'-6"	Bent - Pylons

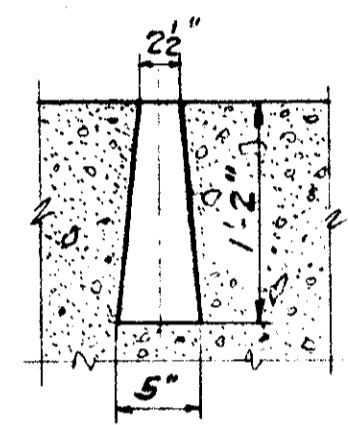


PLAN  
1/4" = 1'-0"

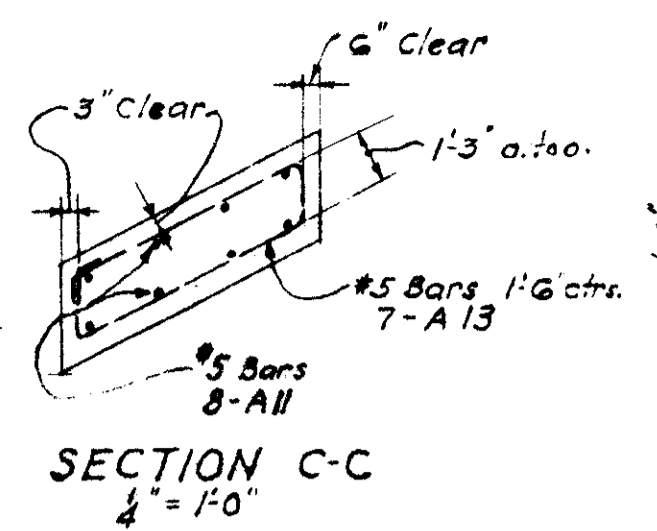


PILE PLAN  
1/8" = 1'-0"

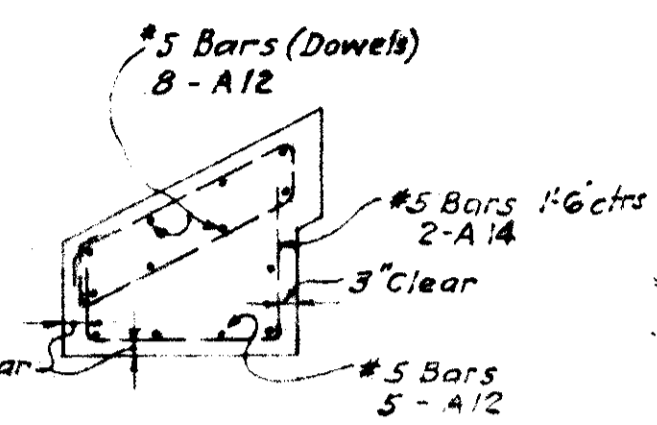
NOTE "A"  
Area of Bridge seat to be poured 2" high and bush hammered to exact elevation, 618.61



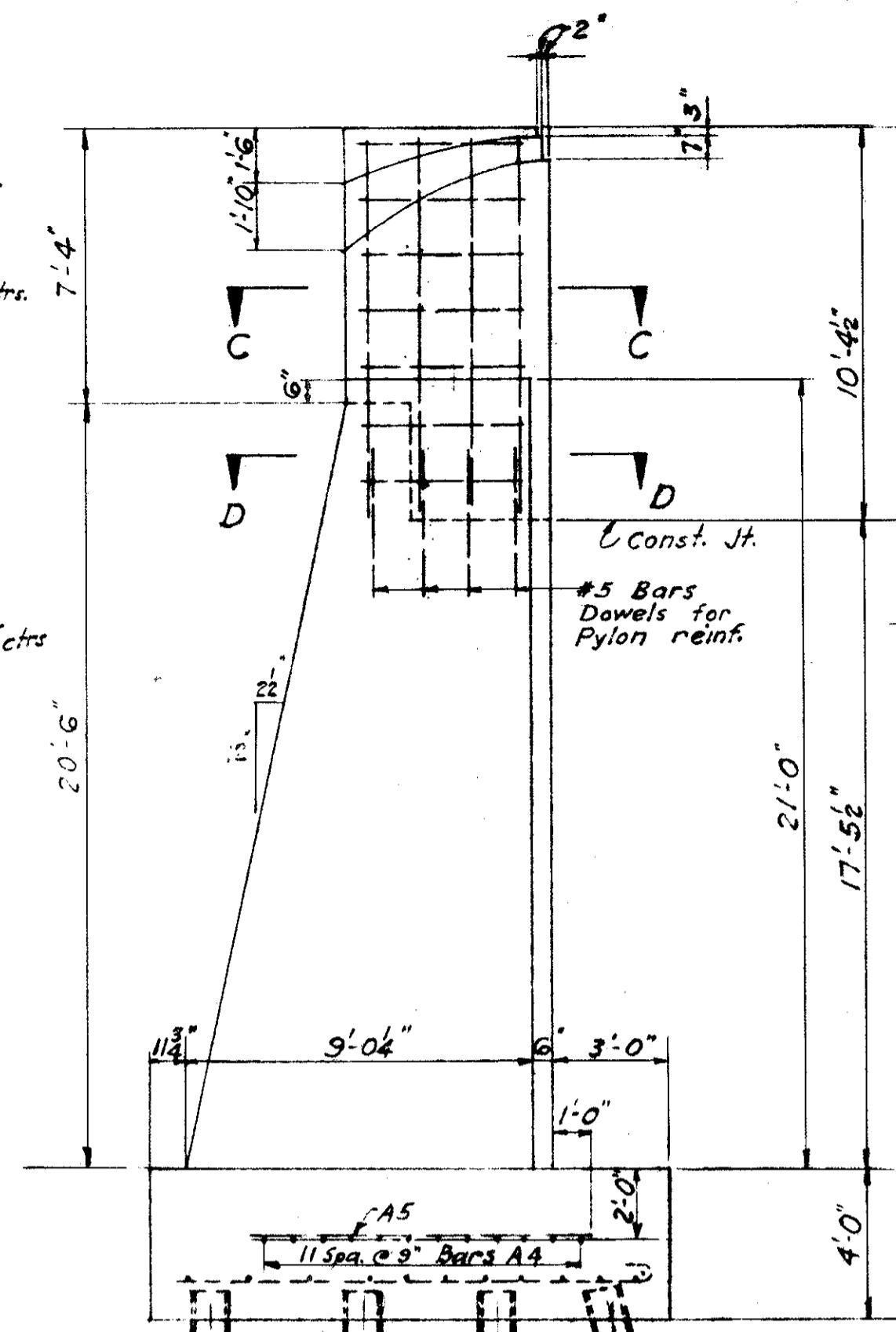
DETAIL OF CONESHAPED HOLES FOR ANCHOR BOLTS



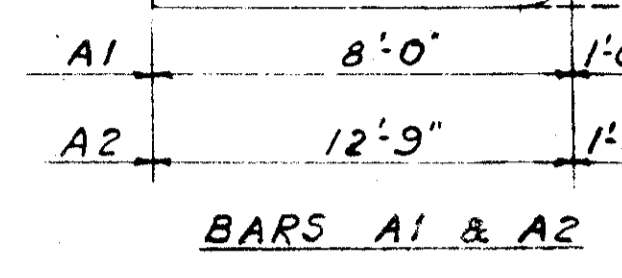
SECTION C-C  
1/4" = 1'-0"



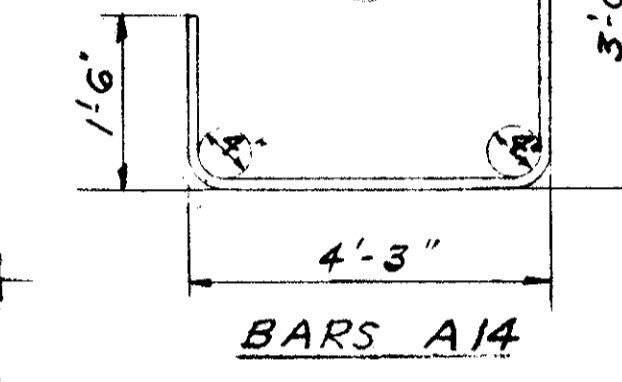
SECTION D-D  
1/4" = 1'-0"



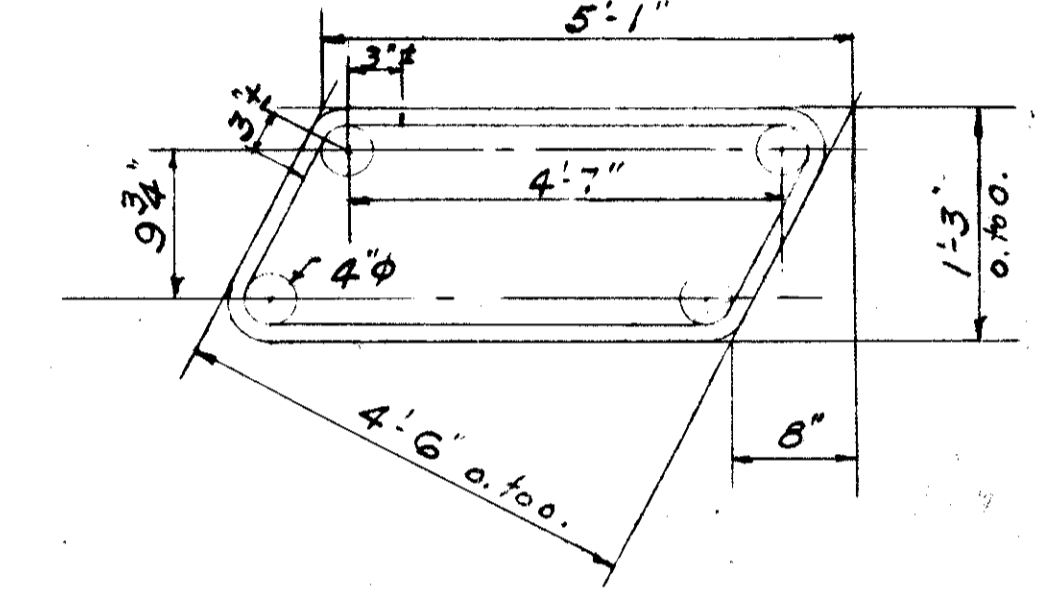
VIEW B-B  
1/4" = 1'-0"



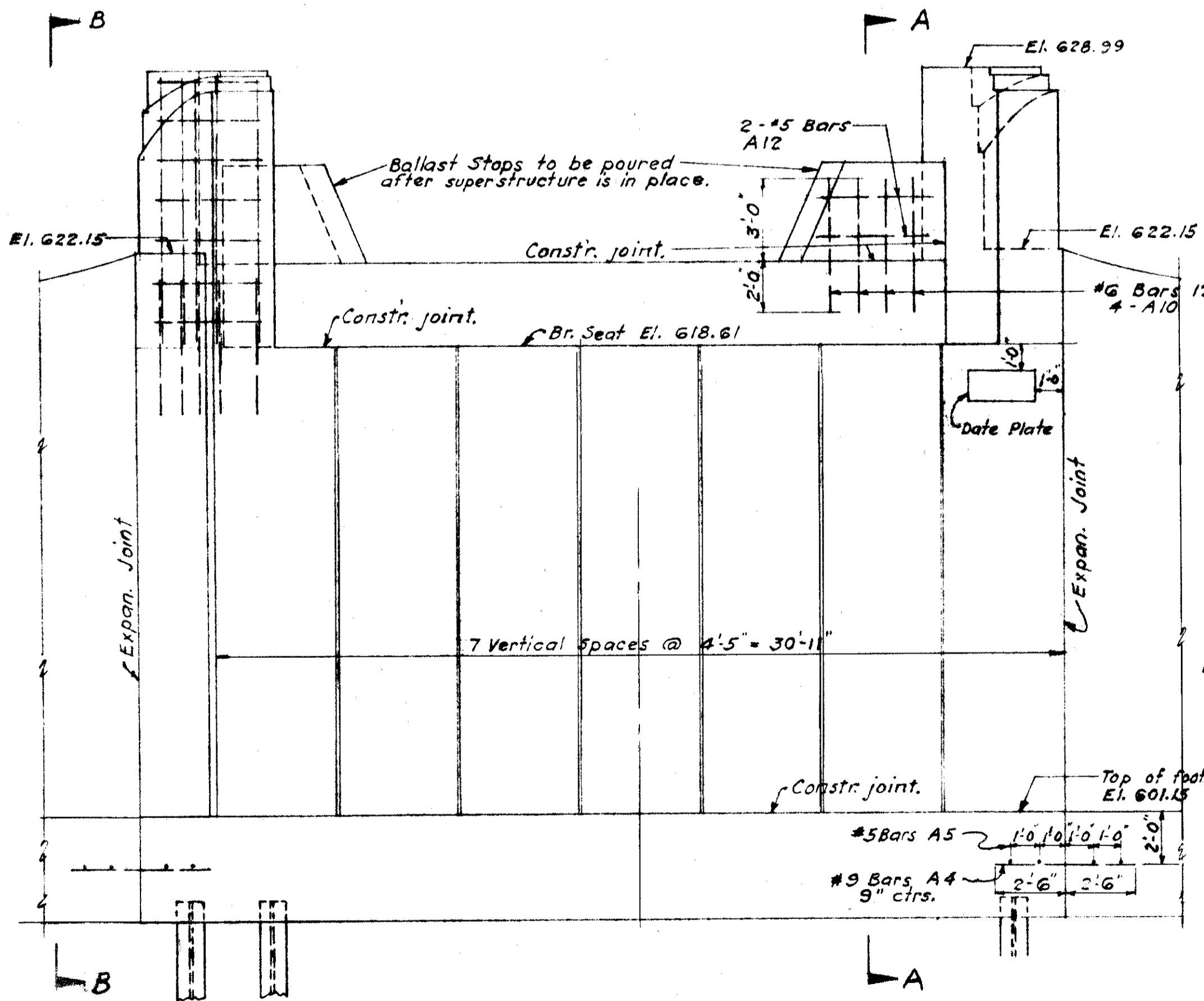
BARS A1 & A2



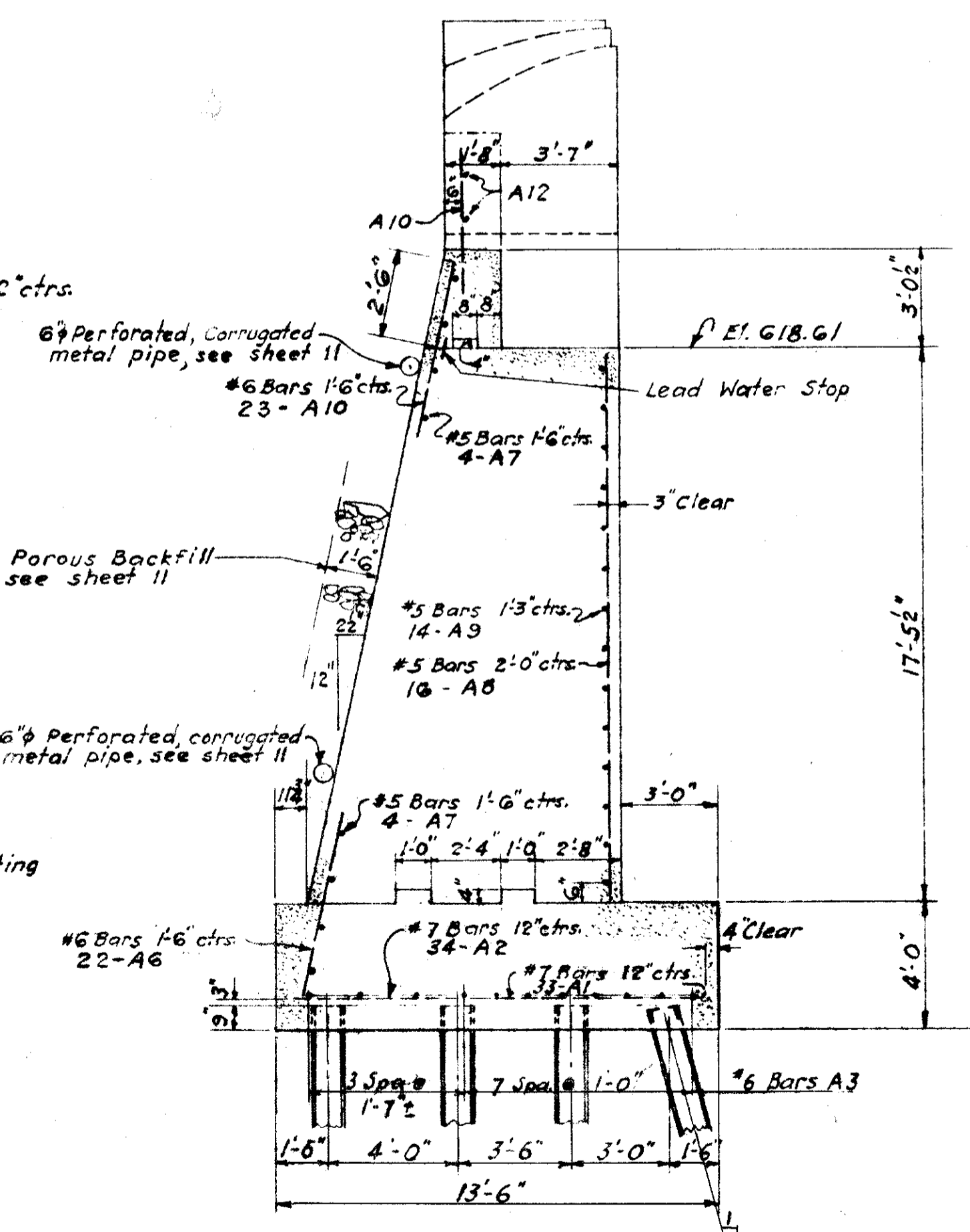
BARS A14



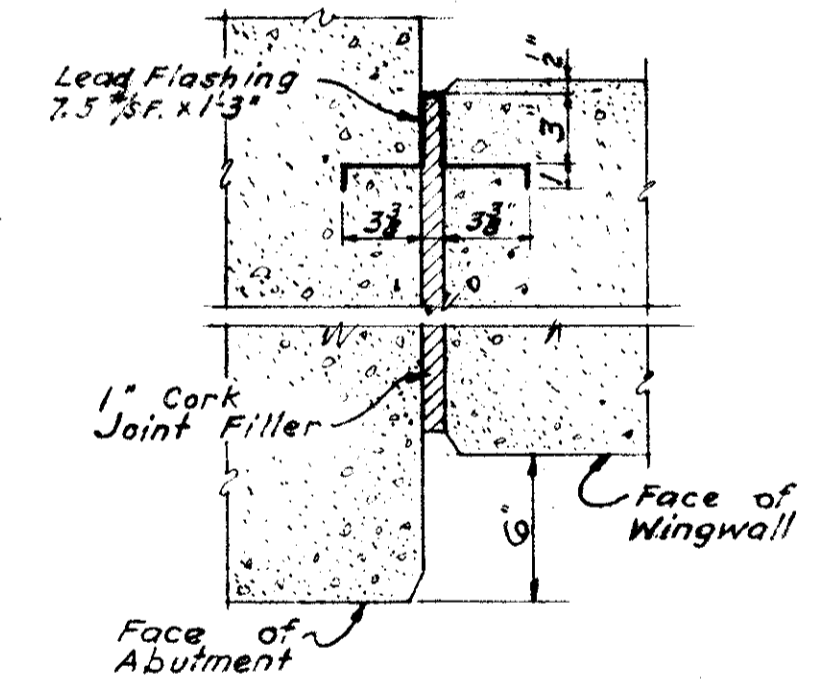
BARS A13



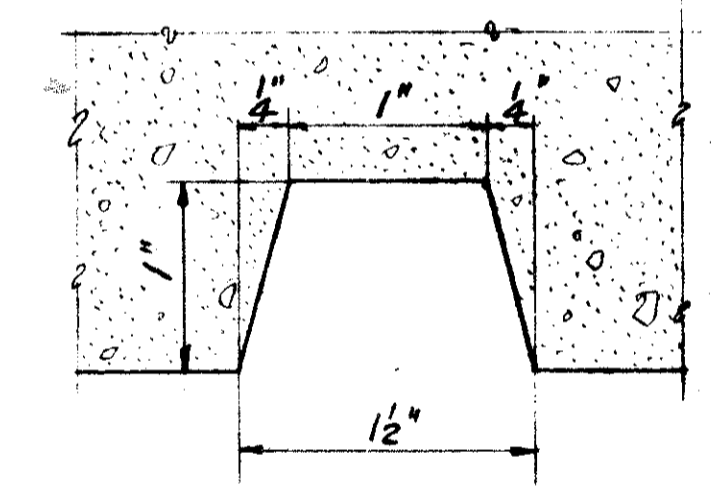
ELEVATION  
1/4" = 1'-0"



SECTION A-A  
1/4" = 1'-0"



VERTICAL EXPANSION JOINT  
TYPICAL  
1/2" = 1'-0"



RUSTICATION DETAIL  
12" = 1'-0"

Correct: *John L. Bredt*  
Engineer of Structures  
Approved: *C. E. I. Co. SPUR*  
Chief Engineer

Date	By	Description
4-14-59	A.R.	Footings revid. - Piling added.

For Substructure General Notes see Sheet G

Highway Bridge No. LAK-2-0453

N.Y.C. SYSTEM OFFICE OF CHIEF ENGINEER NEW YORK, N.Y.

BRIDGE # 56 1/2 C.E.I. Co. SPUR  
GRADE SEPARATION

LAKELAND EXPRESSWAY (S.R.2)  
WILLOUGHBY, OHIO.

MASONRY PLAN - ABUTMENTS

Western District Lake Division Sheet 7 of 11  
Scale: As shown Dec 22, 1958 Vol. Sec. 203 File No 93143

