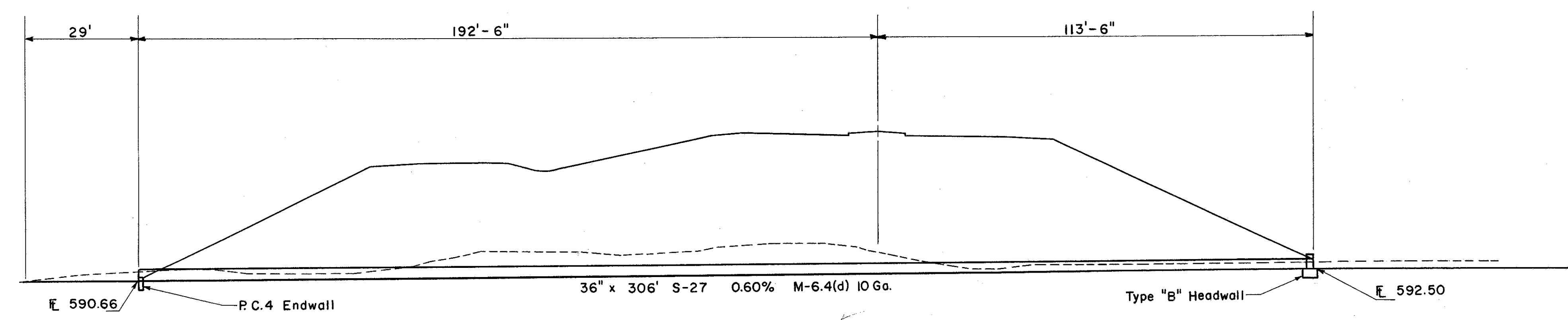
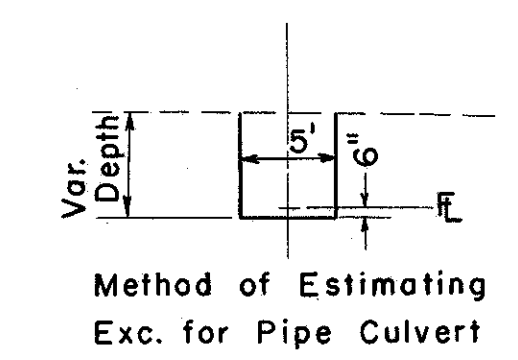
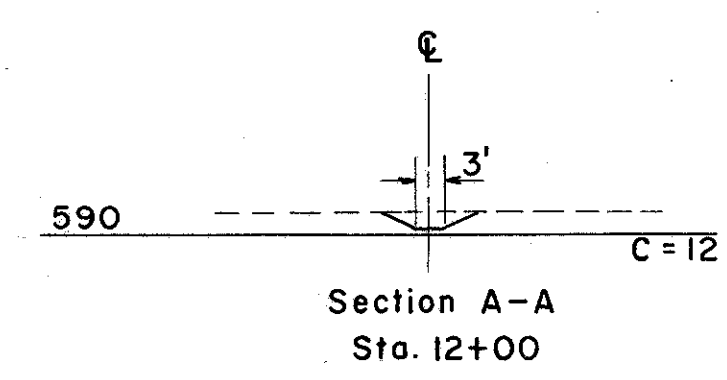


SCALE 1" = 20'

AREA = 14 ACRES
Q₂₅ = 30 C.F.S.

HEADWATER = 1.8 FT.
OUTLET VELOCITY = 5.1 C.F.S.



ESTIMATED QUANTITIES

* E-2	Excavation for Structures	270 C.Y.
E-3	Channel Excavation	16 C.Y.
S-1	Concrete for Structures Class "C"	79 C.Y.
S-1	Concrete for Structures Class "E"	0.59 C.Y.
S-4	Reinforcing Steel	403 Lbs.
S-27	36" Pipe for Roadway Culverts	306 L.F.
L-10	Sodding	11 S.Y.

* Includes E-2 for Headwalls

CULVERT DATA

TYPE: S-27 M 6.4(d) 10 Ga.
 SIZE: 36" x 306'
 WORK REQUIRED: Build a Pipe Culvert with a P-C4 Endwall on the Left, and a Type "B" Headwall on the Right. Sodding on Left as Shown. Excavate Channel on Left.
 NOTE: For Details and Quantities of Headwall See Sheet No. 227.