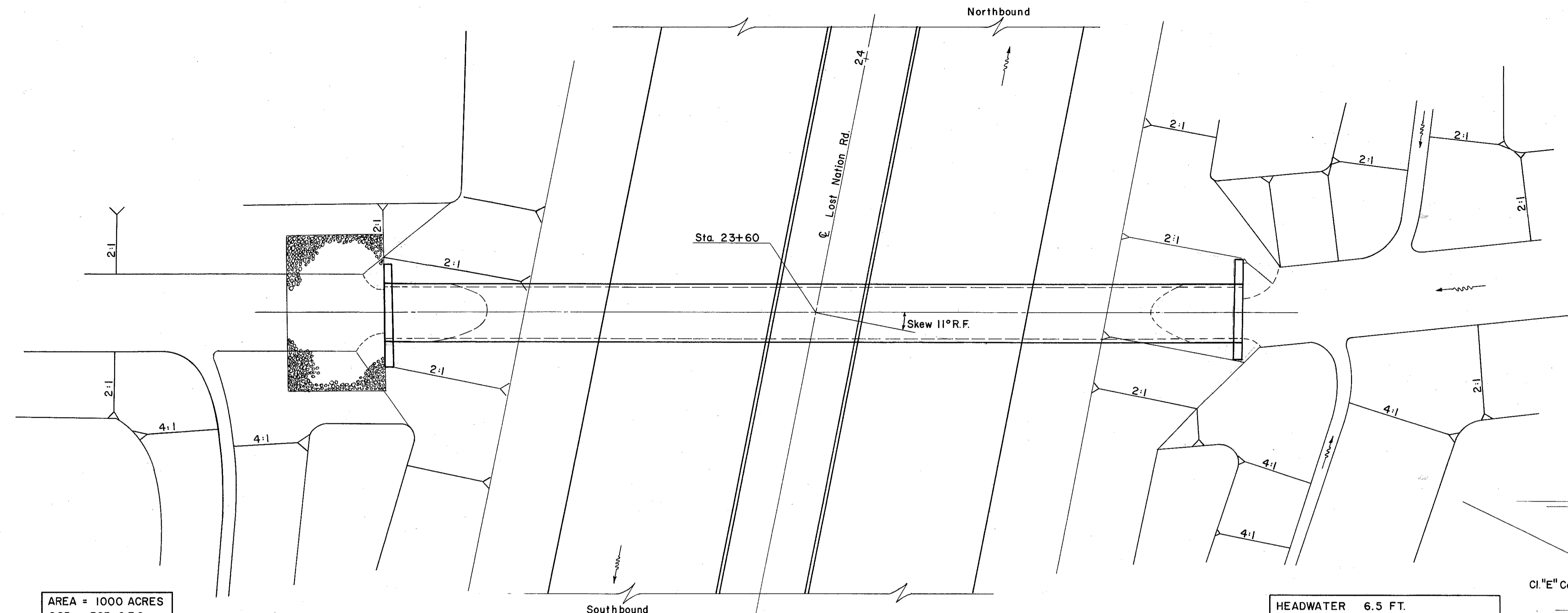
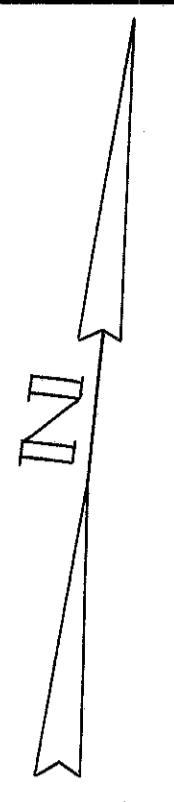


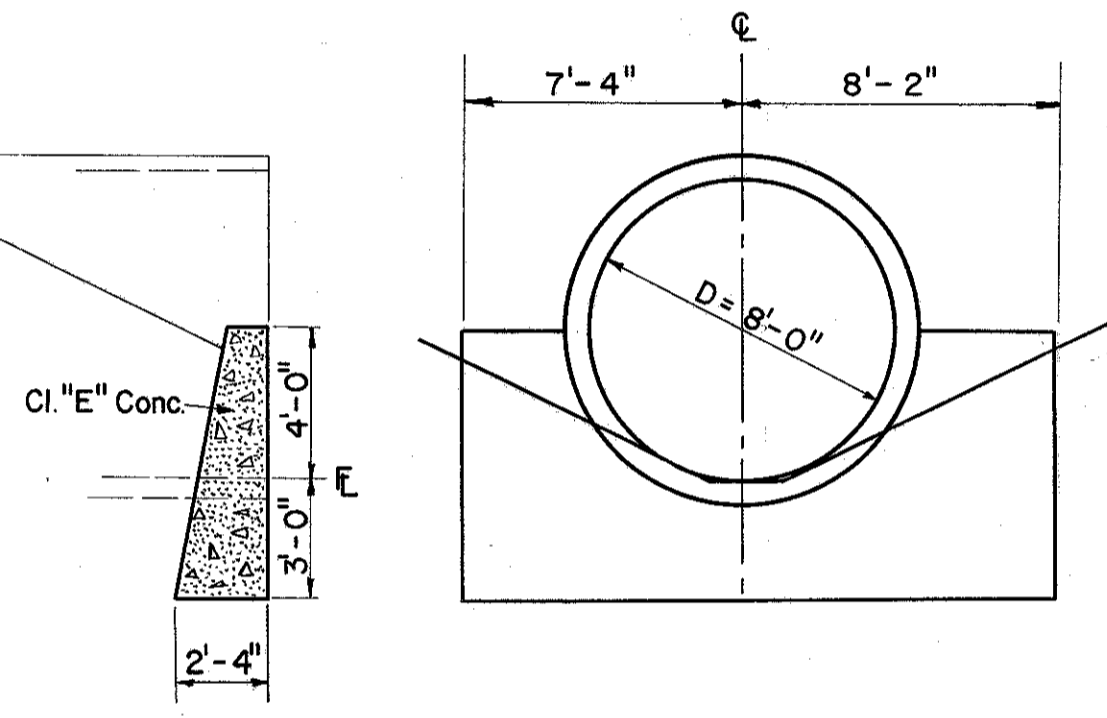
LAKE COUNTY
LAK-2-4.42



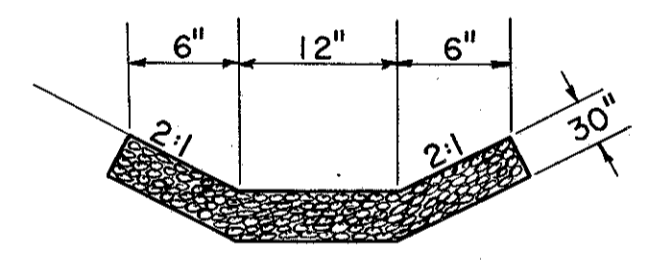
AREA = 1000 ACRES
Q25 = 325 C.F.S.

HEADWATER 6.5 FT.
OUTLET VELOCITY 11.4 FT. PER SEC.

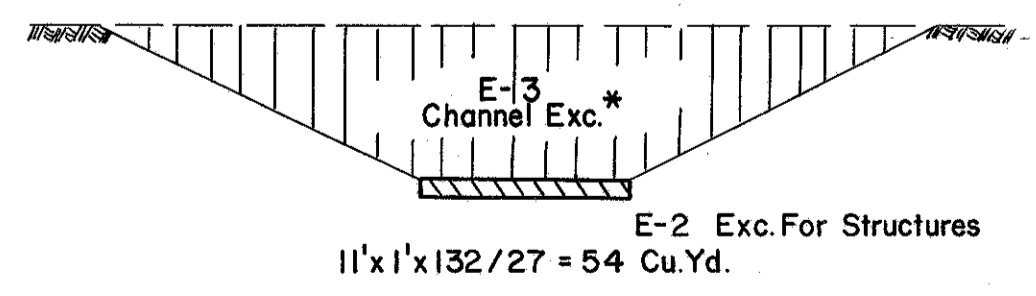
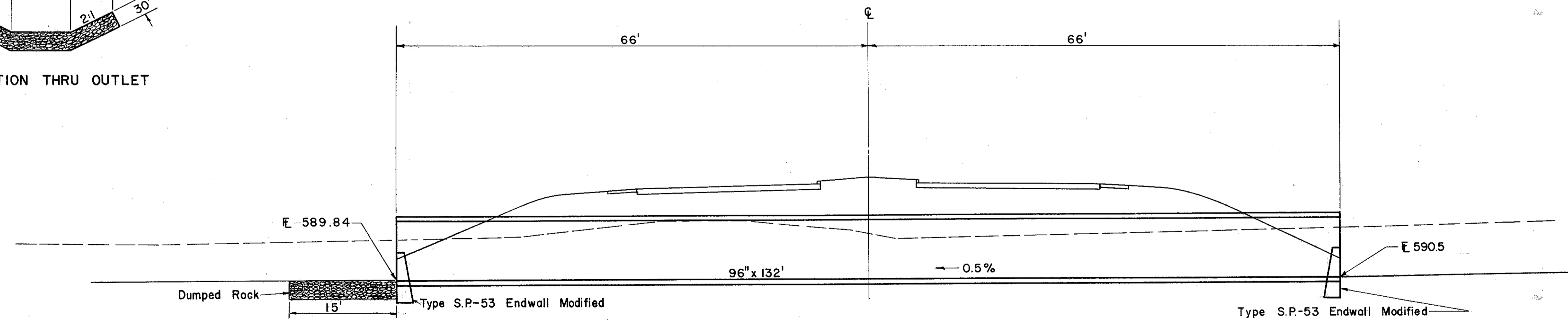
Scale 1" = 10'-0"



MODIFIED S.P. 53 ENDWALL
For Further Details See Std. Dwg. S.P.-53



SECTION THRU OUTLET



METHOD OF ESTIMATING STRUCTURE EXC.

ESTIMATED QUANTITIES

**E-2	Excavation For Structures	70 Cu. Yds.
*E-3	Channel Excavation	
S-1	Concrete For Structures Class "E"	10.12 Cu. Yds.
I-10	Dumped Rock Channel Protection	34 Cu. Yds.
S-27	96" Pipe For Roadway Culverts Sec. M-106.6 (d)	132 Lin. Ft.

** Includes Exc. For Endwalls
* Channel Exc. Carried Thru On Ramp F & St. Clair St.

CULVERT DATA

TYPE: S-27 96" M- 6.6 (b)
SIZE: 96" x 132'
WORK REQUIRED: Build A Pipe Culvert With Mod.
S.P.-53 Endwalls.
Place Dumped Rock At Outlet As Shown.