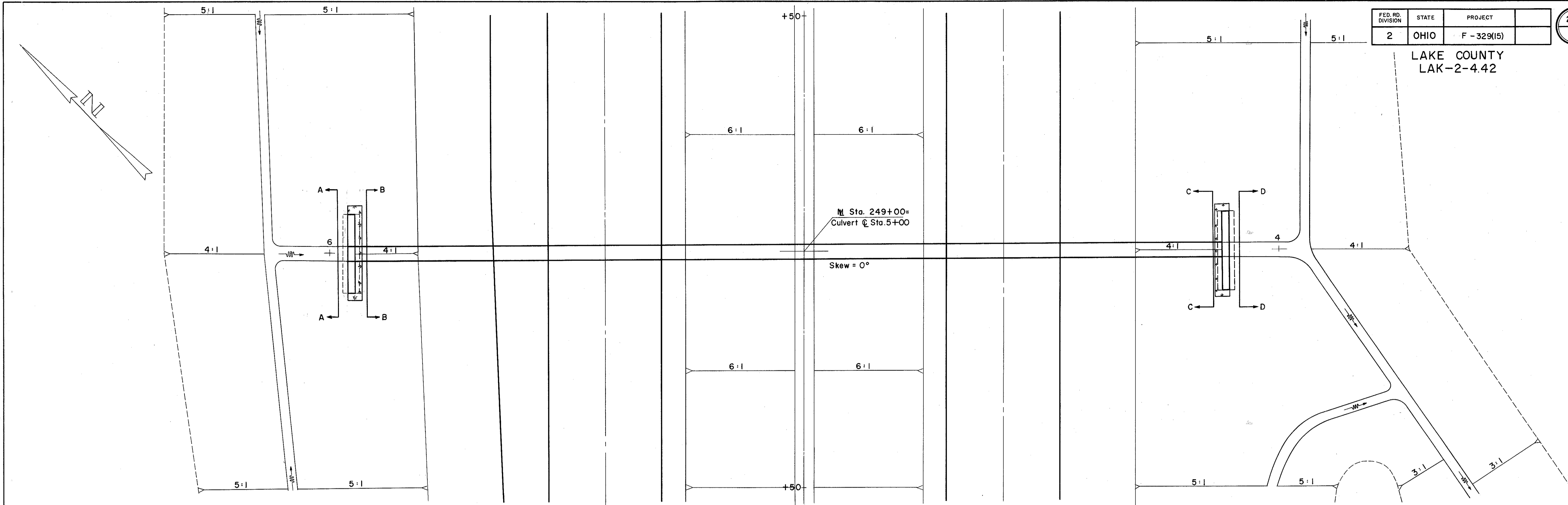


FED. RD. DIVISION	STATE	PROJECT
2	OHIO	F-329(15)

222
297

LAKE COUNTY
LAK-2-4.42



AREA = 22 ACRES
Q₂₅ = 42 C.F.S.

SCALE 1" = 10'

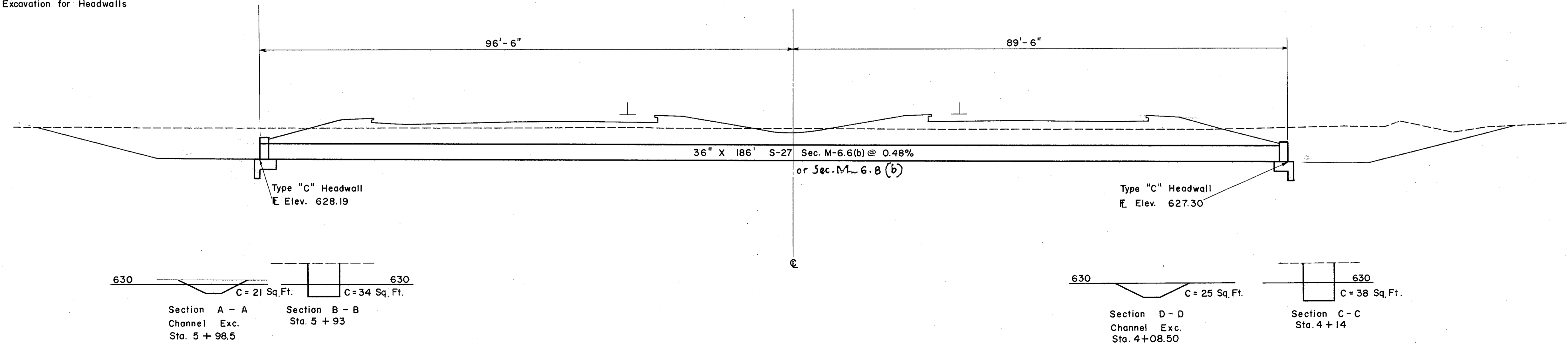
HEADWATER = 3.34 FT.
VELOCITY = 7.6 F.P.S.

ESTIMATED QUANTITIES

- *E-2 Excavation for Structures 316 C.Y.
- E-3 Channel Excavation 9 C.Y.
- S-1 Concrete for Structures Class "C" 16.0 C.Y.
- S-4 Reinforcing Steel 838 Lbs.
- S-27 36" Pipe for Roadway Culverts Sec. M-6.6(b) or M-6.8(b) 186 L.F.
- L-10 Sodding 8 S.Y.
- *E-2 Includes Excavation for Headwalls

CULVERT DATA

TYPE: S-27 Sec. M-6.6(b) or M-6.8(b)
 SIZE: 36" X 186"
 WORK REQUIRED: Build a Pipe Culvert with Std. Type "C" Headwalls. Place Sodding Right and Left as Shown. Excavate for Channel Right and Left.



630 C = 21 Sq. Ft. C = 34 Sq. Ft. 630
 Section A - A Channel Exc. Sta. 5 + 98.5
 Section B - B Sta. 5 + 93

630 C = 25 Sq. Ft. C = 38 Sq. Ft. 630
 Section D - D Channel Exc. Sta. 4 + 08.50
 Section C - C Sta. 4 + 14

STRUCTURE NO. LAK-2-0662

PIPE CULVERT STA. 249 + 00