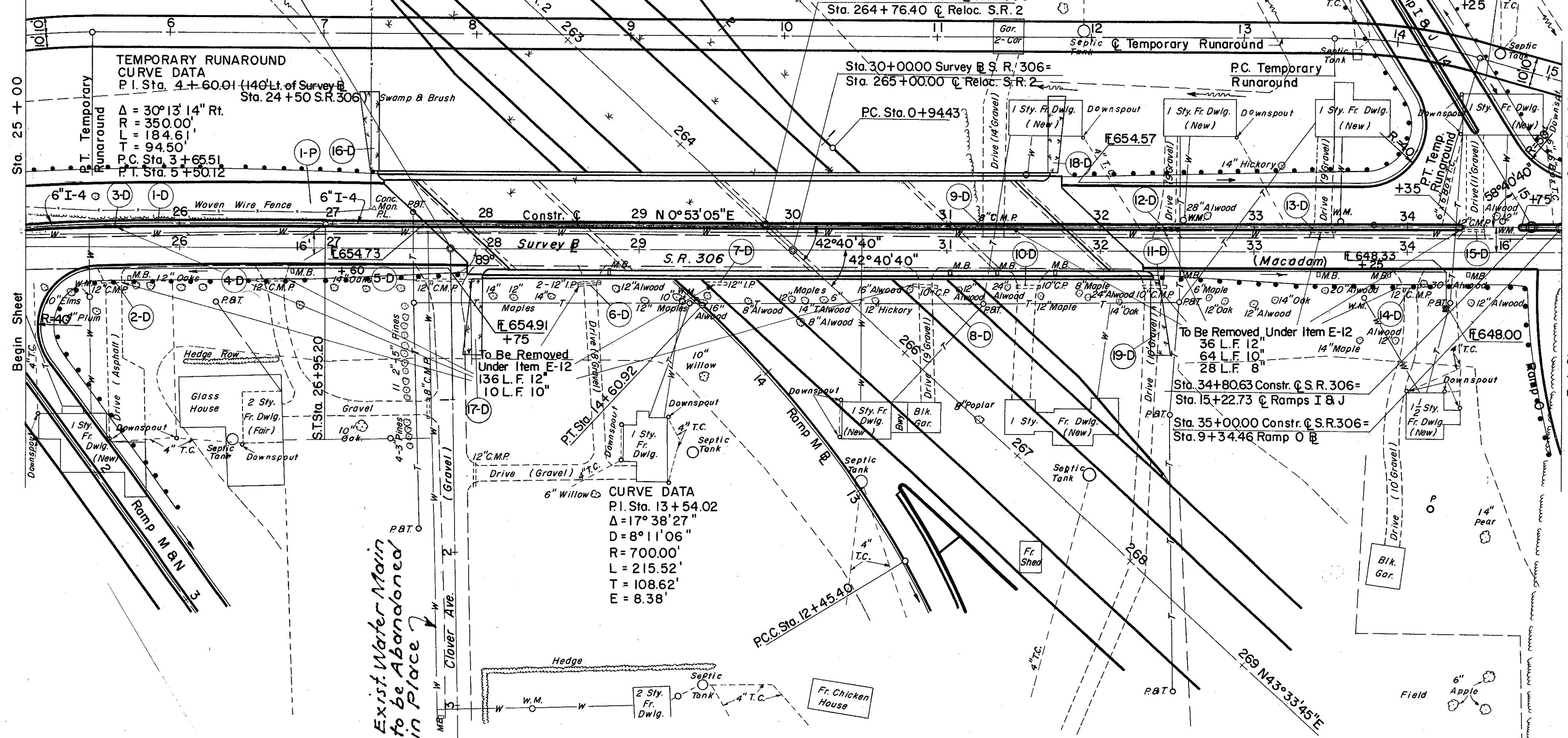


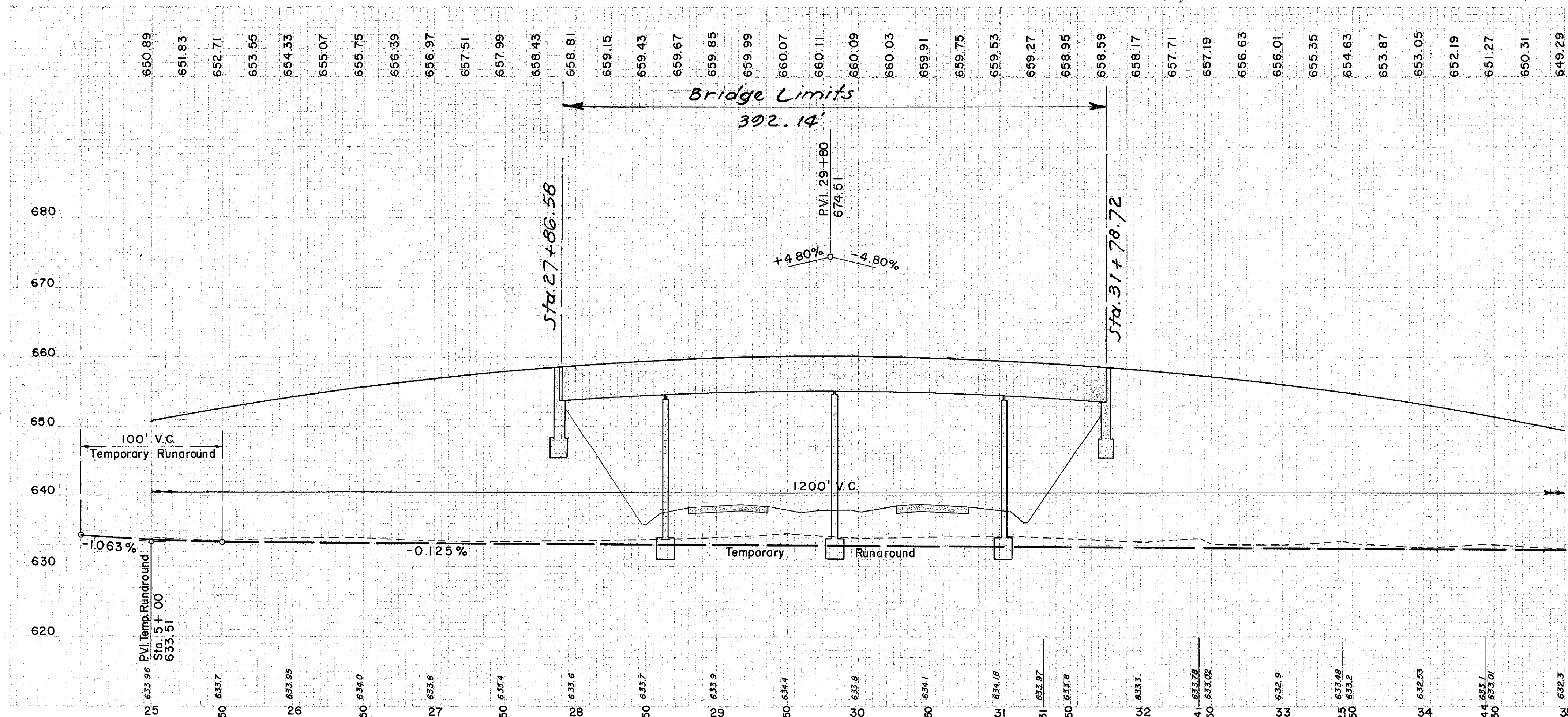
Sta 27 + 77.00 Survey @ S.R. 306 =  
Sta. 0 + 00.00 @ Clover Ave.



TEMPORARY RUNAROUND  
CURVE DATA  
P.I. Sta. 14 + 05.62 (140' Lt. of Survey @  
Sta. 34 + 00 S.R. 306)  
Δ = 15° 38' 32" Rt.  
R = 350.00'  
L = 95.55'  
T = 48.08'  
P.C. Sta. 13 + 57.54  
P.T. Sta. 14 + 53.09

REV. NO.	DATE	REVISION
2	09/10	F-329 (15)

LAKE COUNTY  
LAK-2-4.42



(P) PAVEMENT

REF. NO.	DESCRIPTION	SY.	CY.
I-7	REINFORCED CONCRETE APPROACH SLABS	325	
E-1	COMPACTED SUBGRADE	4034	
I-12	CONCRETE CURB TYPE 2A	1145	
I-18	CRUSHED PORTLAND AGGREGATE SHOULDERS APPROACHES	63	
I-21	PORTLAND CEMENT CONCRETE MEDIAN	127	
I-22	VARIABLE DEPTH SUBBASE	764	
T-71	9" REINFORCED PORTLAND CEMENT CONCRETE PAVT.	3159	

(D) DRAINAGE (CONTINUED)

REF. NO.	DESCRIPTION	SY.	LT.	RT.
L-10	SODDING FOR SPECIAL BERM & SLOPE PROTECTION	54		
I-10	6" PIPE UNDER DRAIN	260		

(D) DRAINAGE

REF. NO.	DESCRIPTION	SY.	LT.	RT.
E-12	PIPE REMOVAL & UNDER	16		
I-4	6" PIPE UNDER DRAIN	260		

(D) DRAINAGE

REF. NO.	DESCRIPTION	SY.	LT.	RT.
I-4	6" PIPE UNDER DRAIN	260		

EXCAVATION	=	92	CY.
EMBANKMENT	=	55,383	CY.
EMBANKMENT	=	66,460	CY.