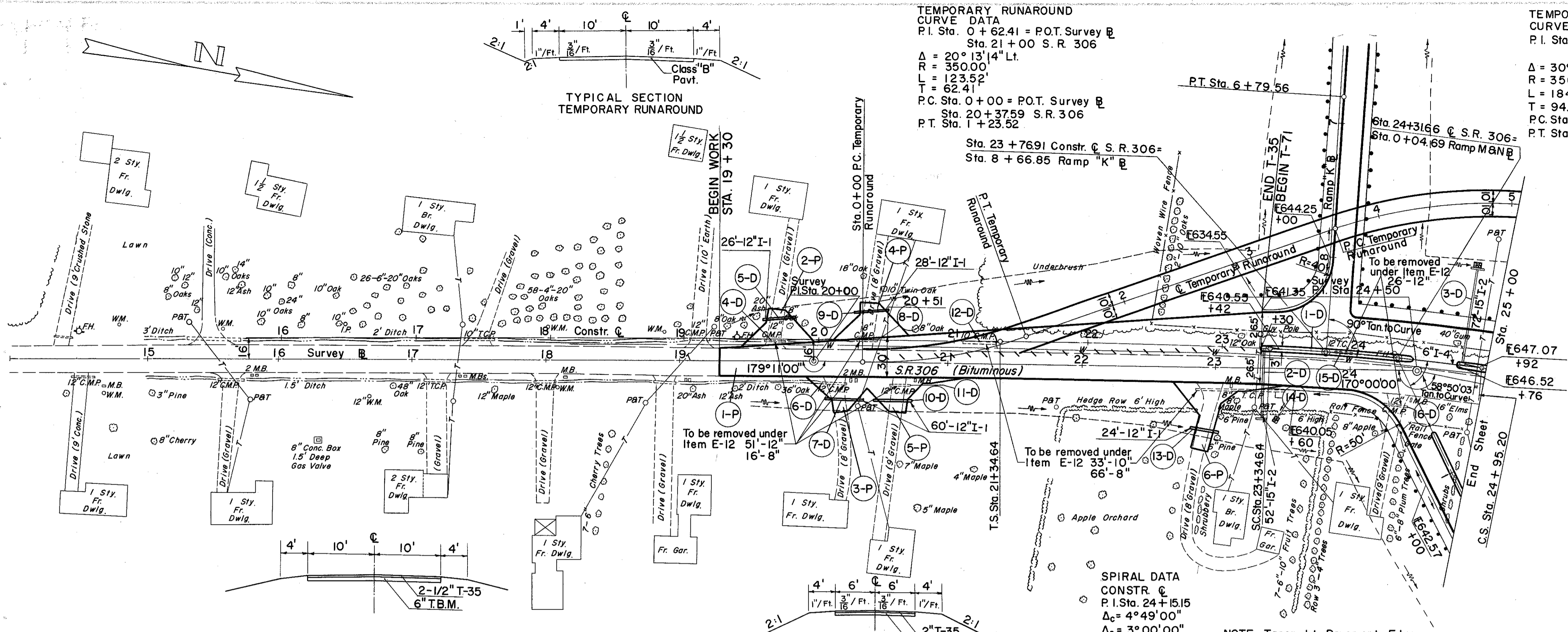


TEMPORARY RUNAROUND
CURVE DATA
P.I. Sta. 0 + 62.41 = P.O.T. Survey B
Sta. 21 + 00 S.R. 306
R = 350.00'
Δ = 20° 13' 14" Lt.
L = 123.52'
T = 62.41'
P.C. Sta. 0 + 00 = P.O.T. Survey B
Sta. 20 + 37.59 S.R. 306
P.T. Sta. 1 + 23.52

TEMPORARY RUNAROUND
CURVE DATA
P.I. Sta. 4 + 60.01 (140' Lt. Survey B
Sta. 24 + 50 S.R.306)
R = 350'
Δ = 30° 13' 14" Rt.
L = 184.61'
T = 94.50'
P.C. Sta. 3 + 65.51
P.T. Sta. 5 + 50.12

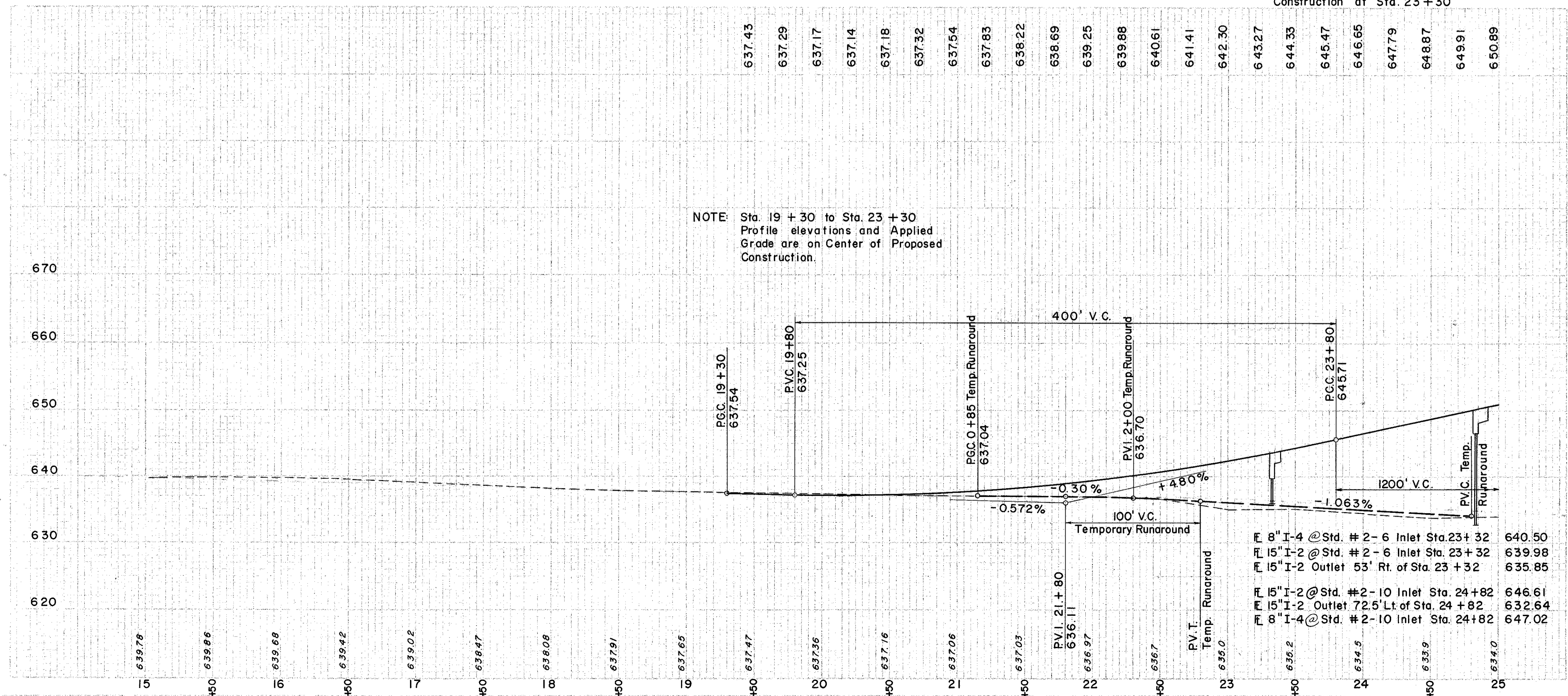


TYPICAL SECTION EXISTING S.R. 306
SCALE: 1" = 10'

TYPICAL SECTION DRIVEWAYS
SCALE: 1" = 10'

SPIRAL DATA
CONSTR. @
P.I. Sta. 24 + 15.15
Δ_c = 4° 49' 00"
Δ_s = 3° 00' 00"
D_s = 3° 00' 00"
L_s = 160.56'
L_c = 200.00'
T_s = 280.89'
E_s = 9.41'

NOTE: Taper Lt. Pavement Edge
33' in 400' between Sta. 19 + 30
and Sta. 23 + 30 Place 23ea.
Precast Conc Traffic Dividers at
12' C-C between Sta. 20 + 51 and
Sta. 23 + 30. Begin Full Width
Construction at Sta. 23 + 30



NOTE: Sta. 19 + 30 to Sta. 23 + 30
Profile elevations and Applied
Grade are on Center of Proposed
Construction.

- 8" I-4 @ Std. # 2 - 6 Inlet Sta. 23 + 32 640.50
- 15" I-2 @ Std. # 2 - 6 Inlet Sta. 23 + 32 639.98
- 15" I-2 Outlet 53' Rt. of Sta. 23 + 32 635.85
- 15" I-2 @ Std. # 2 - 10 Inlet Sta. 24 + 82 646.61
- 15" I-2 Outlet 72.5' Lt. of Sta. 24 + 82 632.64
- 8" I-4 @ Std. # 2 - 10 Inlet Sta. 24 + 82 647.02

(D) DRAINAGE

REF. NO.	STATION	SIDE	DESCRIPTION	EA	EA	C.Y.	EA	C.Y.	EA	C.Y.
E-2	23+00	LT	EXC. FOR 15" & DRIVE UNDER STRUCTURE	16	9	6	16	9	6	16
E-2	23+00	RT	EXC. FOR 15" & DRIVE UNDER STRUCTURE	16	9	6	16	9	6	16
I-1	23+00	LT	PIPE 12" PIPE FOR SEWER DRIVE UNDER WAY	16	9	6	16	9	6	16
I-1	23+00	RT	PIPE 12" PIPE FOR SEWER DRIVE UNDER WAY	16	9	6	16	9	6	16
I-2	23+00	LT	15" STORM UNDER	36	36	52	36	36	52	36
I-2	23+00	RT	15" STORM UNDER	36	36	52	36	36	52	36
I-4	23+00	LT	6" PIPE OUTLET UNDER	10	10	10	10	10	10	10
I-4	23+00	RT	6" PIPE OUTLET UNDER	10	10	10	10	10	10	10
I-5	23+00	LT	15" 26" BEND	2	2	2	2	2	2	2
I-5	23+00	RT	15" 26" BEND	2	2	2	2	2	2	2
I-8	23+00	LT	STD. #2-6 INLET	EA	EA	EA	EA	EA	EA	EA
I-8	23+00	RT	STD. #2-6 INLET	EA	EA	EA	EA	EA	EA	EA
I-10	23+00	LT	DUMPED CONCRETE	C.Y.	C.Y.	3	3	3	3	3
I-10	23+00	RT	DUMPED CONCRETE	C.Y.	C.Y.	3	3	3	3	3
I-10	23+00	LT	ROCK FOR PROTECT. CL. 'c'	LBS	LBS	146	146	146	146	146
I-10	23+00	RT	ROCK FOR PROTECT. CL. 'c'	LBS	LBS	146	146	146	146	146
I-10	23+00	LT	WYE	EA	EA	2	2	2	2	2
I-10	23+00	RT	WYE	EA	EA	2	2	2	2	2
I-15	23+00	LT	1/2 ASPH. CONC. SURF. COURSE	C.Y.	C.Y.	1	1	1	1	1
I-15	23+00	RT	1/2 ASPH. CONC. SURF. COURSE	C.Y.	C.Y.	1	1	1	1	1
I-23	23+00	LT	PRECAST CONC. TRAFFIC DIVIDERS	EA	EA	23	23	23	23	23
I-23	23+00	RT	PRECAST CONC. TRAFFIC DIVIDERS	EA	EA	23	23	23	23	23
TOTALS				972	26	439	10700	2941	274	29

(P) PAVEMENT

REF. NO.	STATION	SIDE	DESCRIPTION	EA	EA	C.Y.	EA	C.Y.	EA	C.Y.
E-1	19+30	LT	COMP. SUBGRADE	2941	2941	2941	2941	2941	2941	2941
E-1	19+30	RT	COMP. SUBGRADE	2941	2941	2941	2941	2941	2941	2941
I-12	19+30	LT	CONC. CURB	274	274	274	274	274	274	274
I-12	19+30	RT	CONC. CURB	274	274	274	274	274	274	274
I-18	19+30	LT	5" CRUSHED AGGREGATE SHOULDERS	11.42	11.42	11.42	11.42	11.42	11.42	11.42
I-18	19+30	RT	5" CRUSHED AGGREGATE SHOULDERS	11.42	11.42	11.42	11.42	11.42	11.42	11.42
I-22	19+30	LT	3" SUBBASE	439	439	439	439	439	439	439
I-22	19+30	RT	3" SUBBASE	439	439	439	439	439	439	439
I-23	19+30	LT	REINFORCED ASPH. SURFACE COURSE	4.57	4.57	4.57	4.57	4.57	4.57	4.57
I-23	19+30	RT	REINFORCED ASPH. SURFACE COURSE	4.57	4.57	4.57	4.57	4.57	4.57	4.57
I-23	19+30	LT	PRECAST CONC. TRAFFIC DIVIDERS	5.06	5.06	5.06	5.06	5.06	5.06	5.06
I-23	19+30	RT	PRECAST CONC. TRAFFIC DIVIDERS	5.06	5.06	5.06	5.06	5.06	5.06	5.06
TOTALS				915	915	915	915	915	915	915