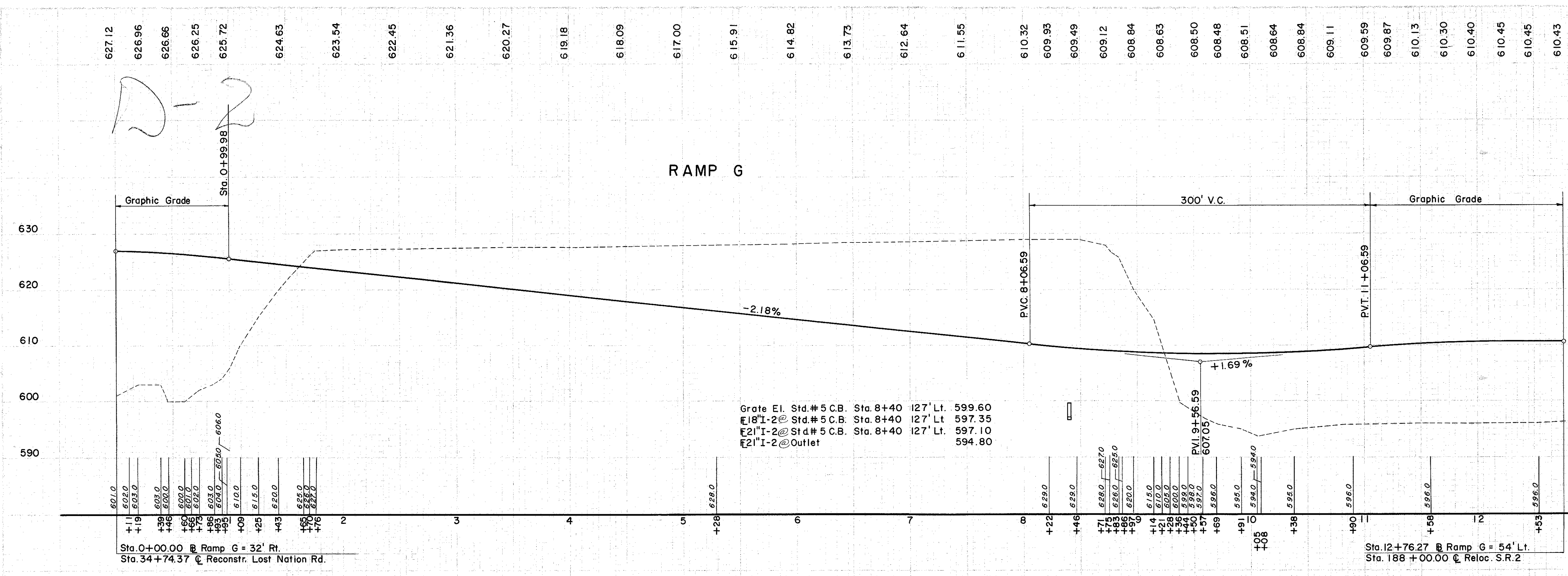
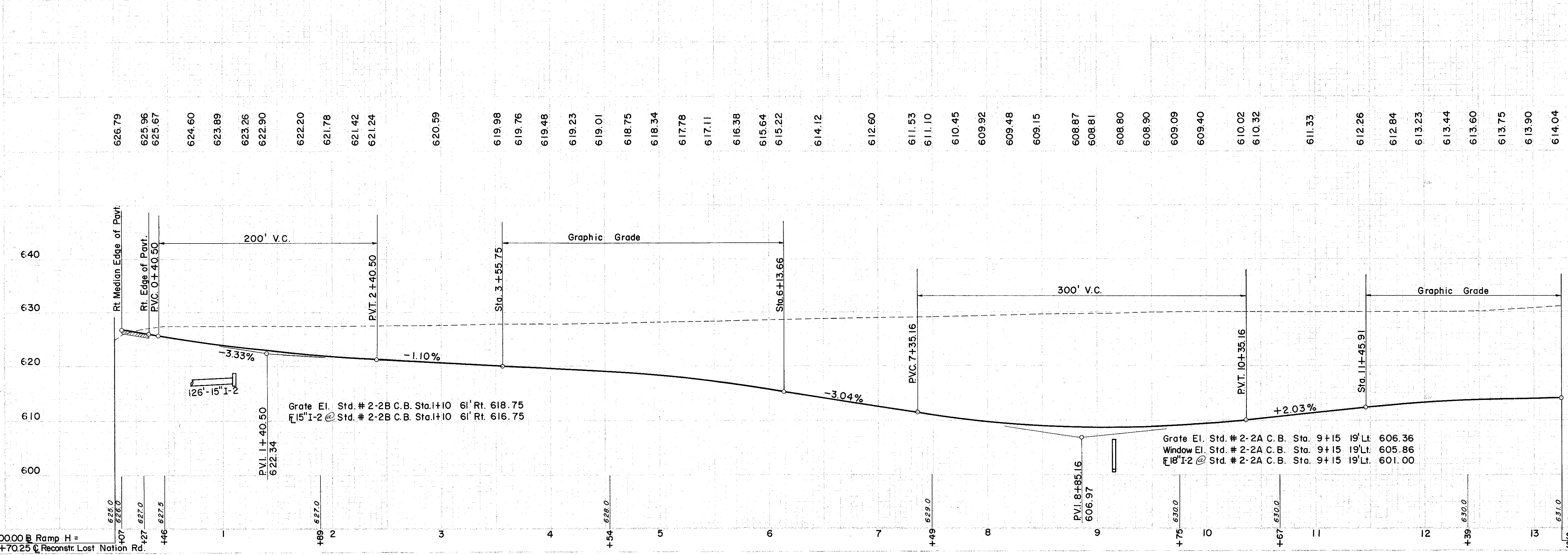


LAKE COUNTY
 LAK-2-4.42



RAMP H



LOST NATION ROAD INTERCHANGE
 PROFILE RAMPS G & H

Sta. 0+00.00 Ramp H = 127' Lt. 627.0
 Sta. 37+70.25 Reconst. Lost Nation Rd. +46 627.5
 Sta. 0+00.00 Ramp G = 32' Rt.
 Sta. 34+74.37 Reconst. Lost Nation Rd.
 Sta. 12+76.27 Ramp G = 54' Lt.
 Sta. 188+00.00 Reloc. S.R. 2