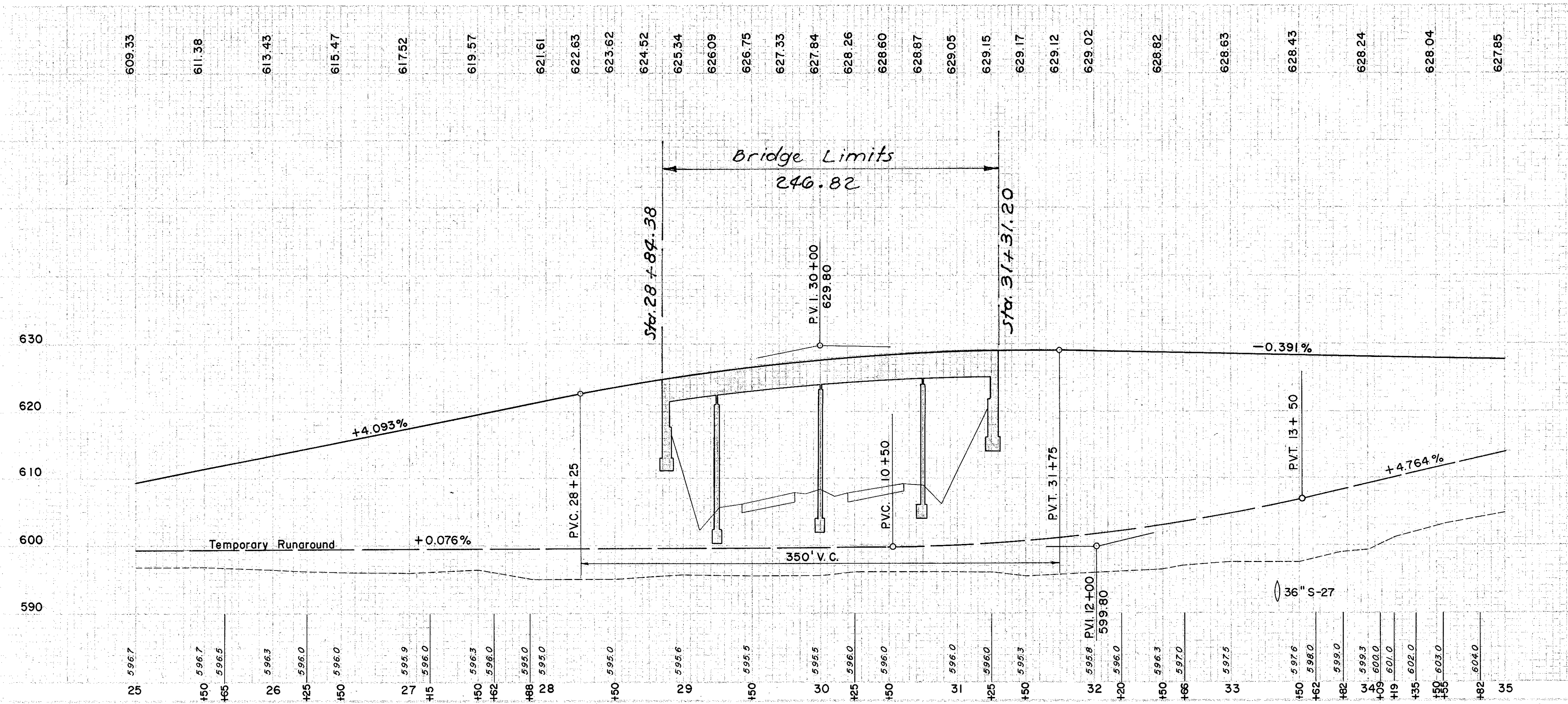
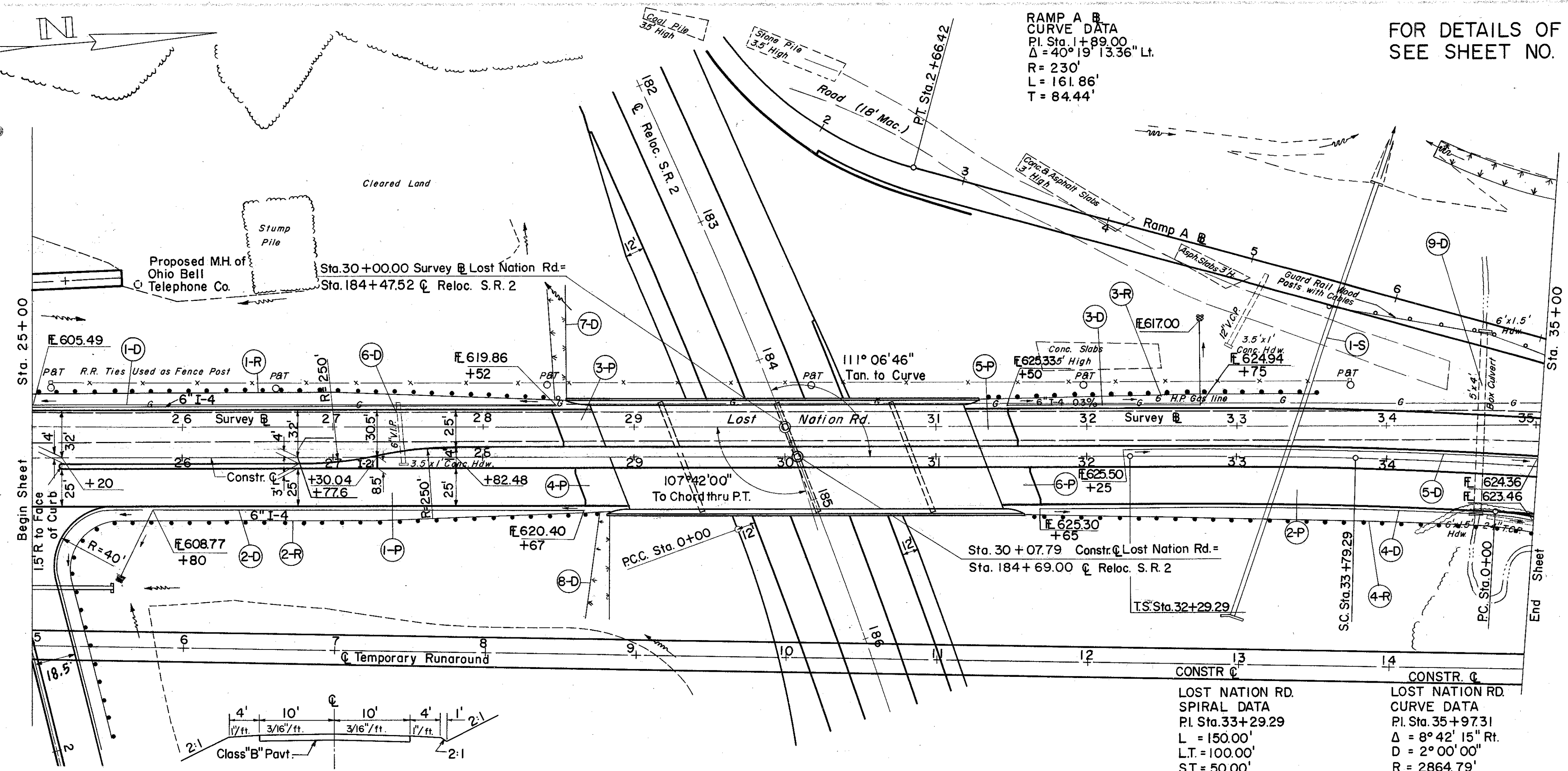


MICROFILMED
SEP 23 1966

FOR DETAILS OF STRUCTURE
SEE SHEET NO. 225



(D) DRAINAGE

REF NO.	STATION	TO	FROM	PIPE UNDER DRAIN SEC. (SHALLOW)-6.4(g)	PIPE OUTLET PIPE	I-5	S-29	S-24	E-12	L-10
				L.F.	6" 60° BEND	6" 90° BEND	DRAINAGE OF STRUCT. NO.2	REMOVAL OF EXIST. STRUCT.	PIPE REMOVAL 15" & UNDER	SOILING SPECIAL SLOPE & BERM PROTECT
I-D	25+00	28+52	LT	352						
2-D	25+60	28+67	RT	346			0.3			
3-D	31+30	32+75	LT	170			0.3			
4-D	31+65	35+00	RT	335						
5-D	32+25	35+00	LT	275						
6-D	27+45									
7-D	28+55									
8-D	28+80									
9-D	34+60									
TOTAL										

(R) ROADWAY

REF NO.	STATION	TO	FROM	I-5 GUARD RAIL STEEL BEAM TYPE (DEEP)	NO. 2-A	TOTAL
				L.F.	L.F.	
I-R	25+00	28+55	LT	350.0		
2-R	2+00 Ramp F	28+80	RT	487.5		
3-R	31+30	35+50	LT	225.0		
4-R	31+60	35+00	RT	337.5		
TOTAL						1400.0

(S) STRUCTURES

REF NO.	STATION	TO	FROM	E-2 EXC. FOR STRUCT.	E-3 CHAN. EXC. STRUCT.	S-1 CONC. STRUCT.	S-27 CONC. FOR SODDING	L-10 SODDING
				C.Y.	C.Y.	C.Y.	L.F.	S.Y.
I-S	33+33			270	16	7.9	306	0.59
TOTAL				270	16	7.9	306	0.59

(P) PAVEMENT

REF NO.	STATION	TO	FROM	T-71 CONC.	I-12 TYPE 2-A CONC. CURB	I-18 STAB. CRUSHED AGGR.	I-22 SUB-BASE	I-7 REIN. CONC. AGGR.	E-1 COMP. SUB-PAVT.	I-21 4" CONC. MED. PAVT. TYPE I
				S.Y.	L.F.	C.Y.	C.Y.	S.Y.	S.Y.	S.Y.
1-P	25+00	28+84.38	LT	2324	721	44	516	2642	2150	59
2-P	31+31.20	35+00	RT	1948	740	28	397	694	694	59
3-P	28+51.85	28+76.85	LT					694	694	
4-P	28+66.91	28+91.91	RT					694	694	
5-P	31+23.67	31+48.67	LT					694	694	
6-P	31+38.73	31+63.73	RT					694	694	
TOTALS				4272	1461	72	913	278	4792	59

737 C.Y.
110,852 C.Y.
133,022 C.Y.