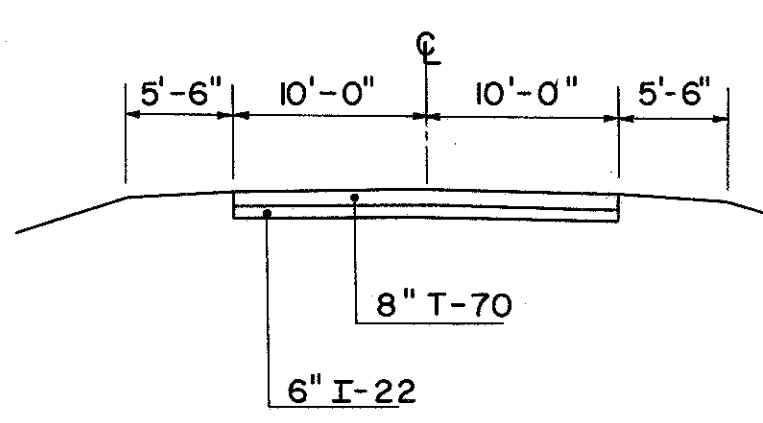
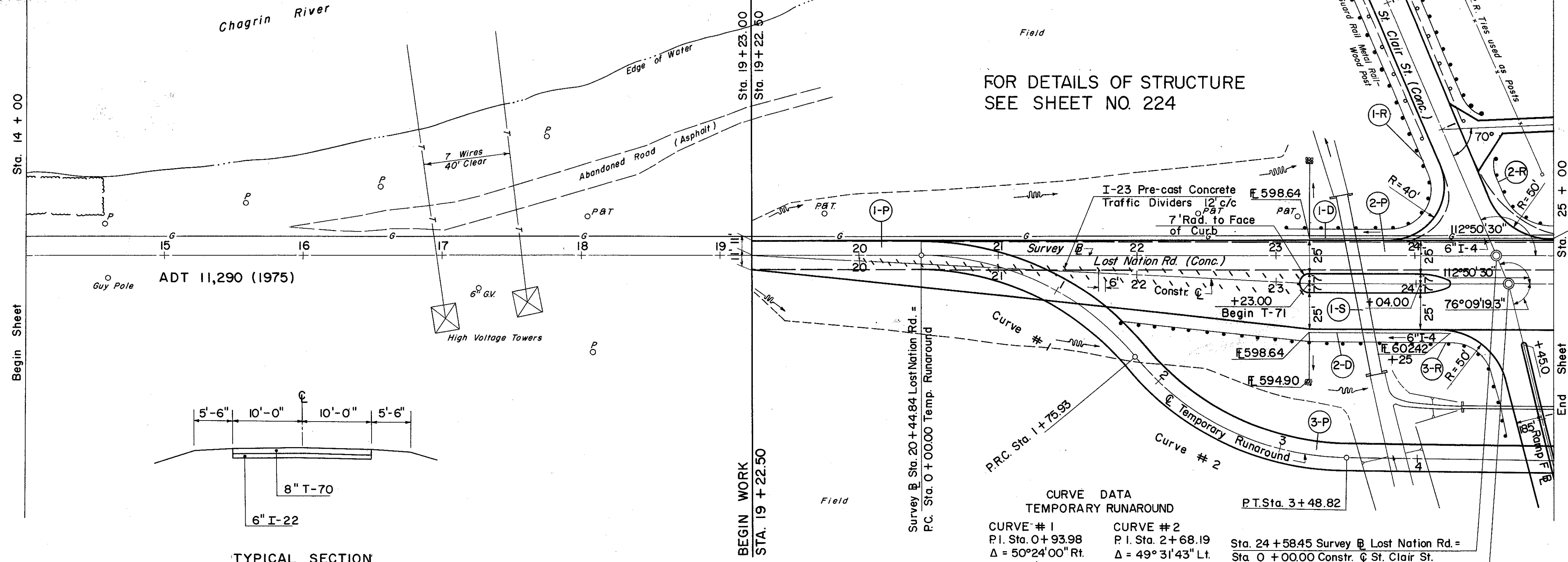


CONSTR. @ DATA  
P.I. Sta. 19+22.50  
Δ = 2° 51' 54.9" Rt.  
No Curve

CONSTR. @ DATA  
P.I. Sta. 23+23  
Δ = 2° 51' 54.9" Lt.  
No Curve

FOR DETAILS OF STRUCTURE  
SEE SHEET NO. 224



TYPICAL SECTION  
ADJOINING PAVEMENT

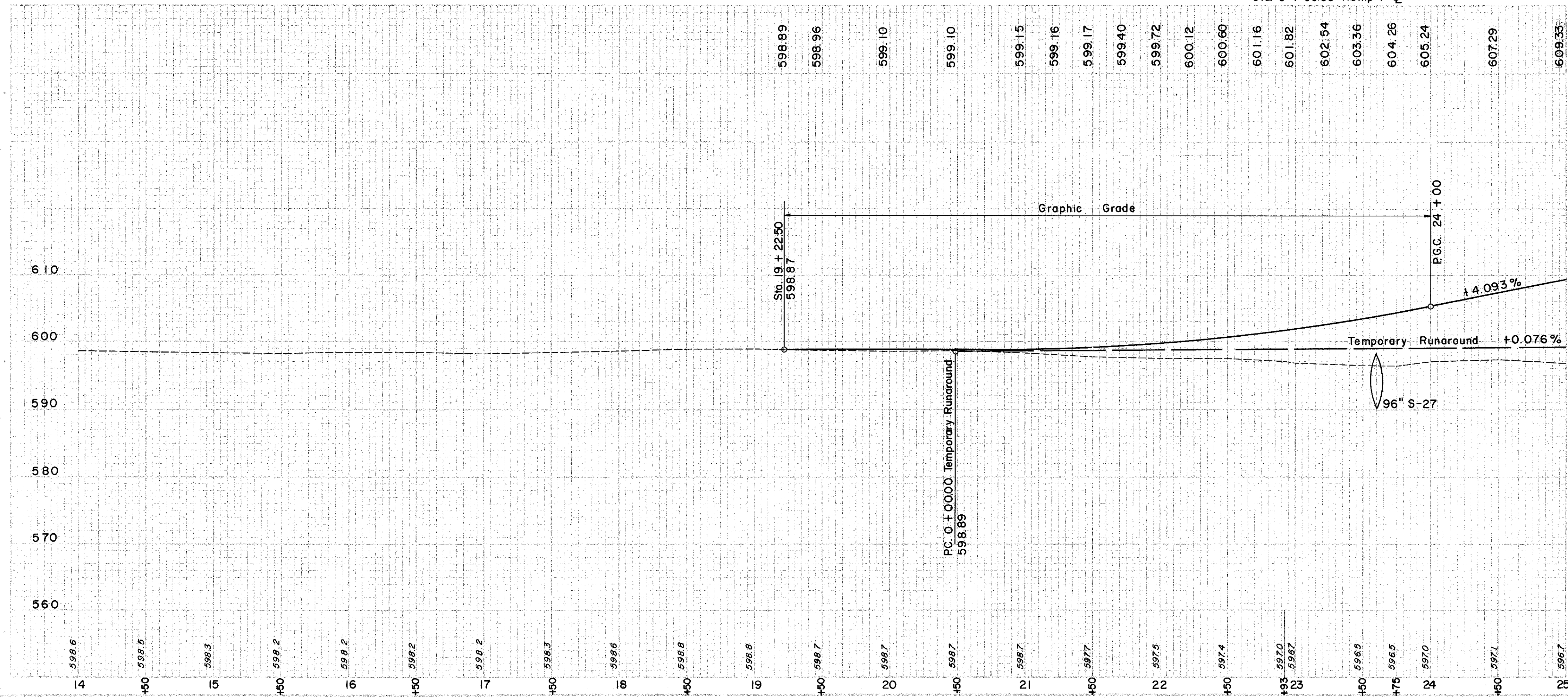
CURVE DATA  
TEMPORARY RUNAROUND

CURVE # 1  
P.I. Sta. 0+93.98  
Δ = 50° 24' 00" Rt.  
R = 200'  
L = 175.93'  
T = 93.98'

CURVE # 2  
P.I. Sta. 2+68.19  
Δ = 49° 31' 43" Lt.  
R = 200'  
L = 172.89'  
T = 92.26'

Sta. 24+58.45 Survey @ Lost Nation Rd. =  
Sta. 0+00.00 Constr. @ St. Clair St.

Sta. 24+66.88 Reconstr @ Lost Nation Rd. =  
Sta. 0+21.72 Constr. @ St. Clair St. =  
Sta. 0+00.00 Ramp



REF NO.	STATION	E-2 EXCAV FOR STRUCT.		I-10 DUMPED ROCK CHANNEL PROTECT.		S-1 SUBGR.		S-27 FOR R.F.M.Y. SEC. 106.6 (d)	
		FROM	TO	C.Y.	L.F.	C.Y.	L.F.	C.Y.	L.F.
I-S	23+60	70	34	10.12	132				

(S) STRUCTURES

REF NO.	STATION	I-12 TYPE 2-A CURB		I-18 SUB-CRUSHED BASE		I-22 SUB-BASE		E-1 COMPACT SUBGR.		T-35 ASPHALTIC CONC. LEVELING COURSE		S-15 TEMPORARY RUNAROUND		I-12 PRECAST CONCRETE TRAFFIC DIVIDERS	
		FROM	TO	S.Y.	L.F.	C.Y.	L.F.	C.Y.	L.F.	C.Y.	L.F.	C.Y.	L.F.	C.Y.	L.F.
I-P	19+22.50	23+23	25+00	1114	222	9	204	196	1350	79	87	103	472	307	202
2-P	23+23	25+00	21+7805												
3-P	0+00	TOTALS	1114	222	58	400	2464	79	87	103	472	307	202	54	22

(P) PAVEMENT

REF NO.	STATION	I-4 SIDE DRAIN UNDER DRAIN SHALLOW BEND		S-29 DRAINAGE OUTLET OF STRUCT. NO. 2		I-4 SIDE RAIL STEEL BEAM TYPE (DEEP)	
		FROM	TO	EA	C.Y.	L.F.	L.F.
I-D	23+23	25+00	220	1	0.3	10	
2-D	23+23	24+25	130	1	0.3	10	

(R) ROADWAY

REF NO.	STATION	I-5 GUARD RAIL STEEL BEAM TYPE (DEEP)	
		FROM	TO
I-R	23+00	HOUSTON ST.	150.0
2-R	0+50	HOUSTON ST.	25+00
3-R	21+62.5	HOUSTON ST.	350.0
	TOTAL		575.0

EXCAVATION	=	923 C.Y.
EMBANKMENT	=	7,382 C.Y.
EMBANKMENT @ 20%	=	8,858 C.Y.