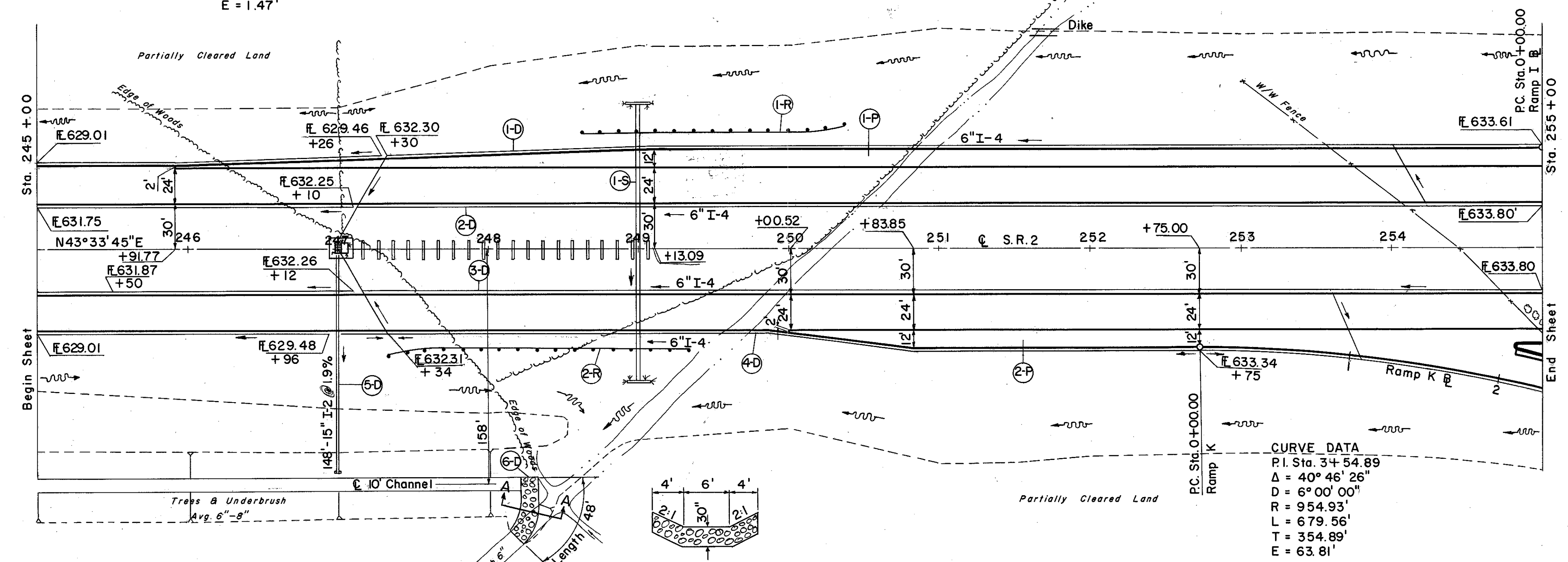
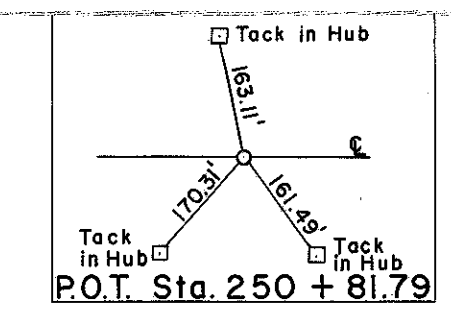


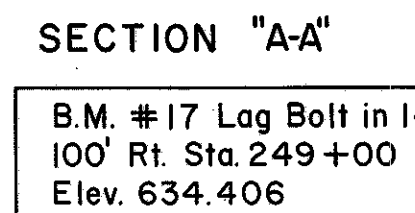
LAKE COUNTY  
LAK-2-4.42

EDGE OF PAVEMENT  
CURVE DATA  
P.I. Sta. 245 + 63.09 54' Lt.  
Δ = 1°57'49"  
D = 0°34'23"  
R = 10000.00'  
L = 342.71'  
T = 171.37'  
E = 1.47'

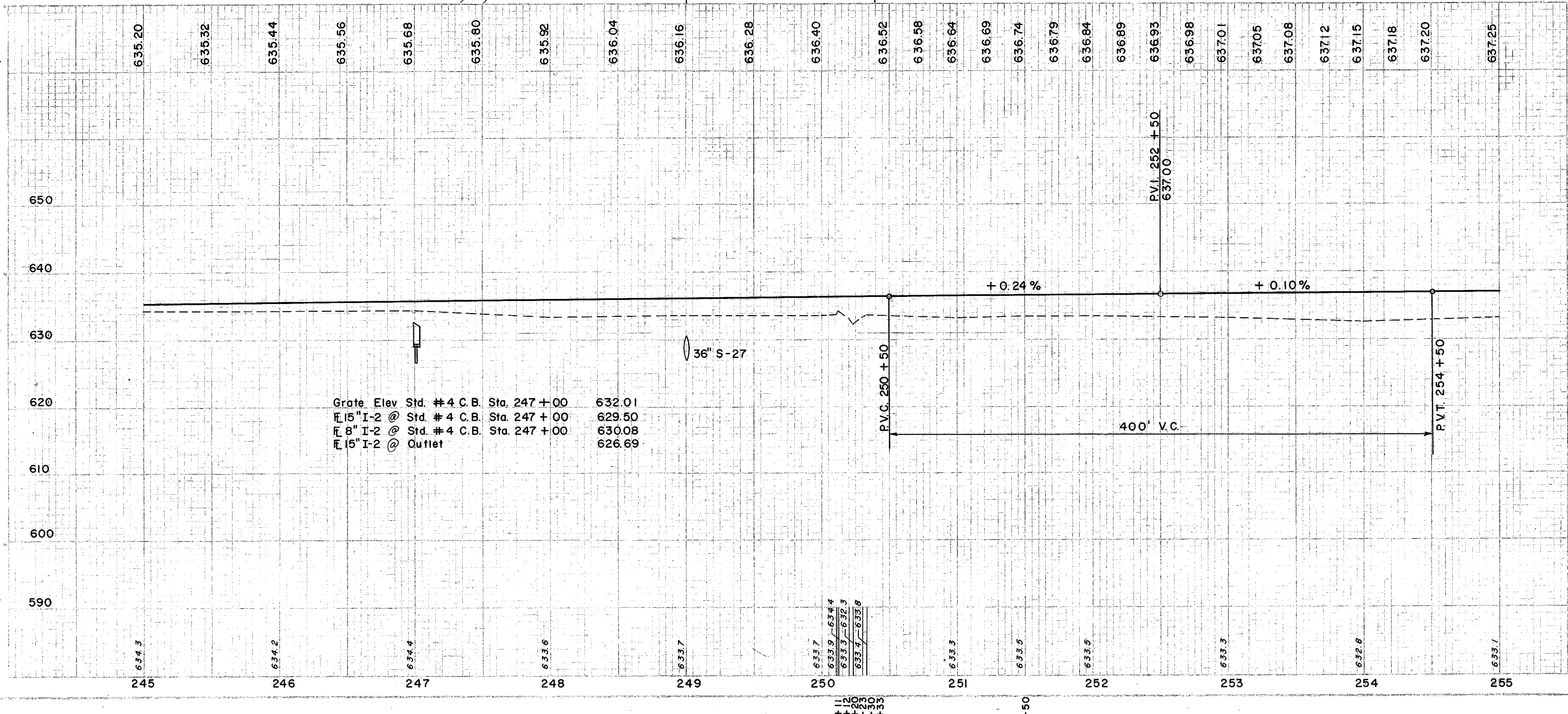
STRUCTURE LAK-2-0662  
FOR DETAILS OF STRUCTURE  
SEE SHEET NO. 222



CURVE DATA  
P.I. Sta. 3 + 54.89  
Δ = 40°46'26"  
D = 6°00'00"  
R = 954.93'  
L = 679.56'  
T = 354.89'  
E = 63.81'



B.M. #17 Lag Bolt in 14" Elm  
100' Rt. Sta. 249+00  
Elev. 634.406



Grate Elev. Std. #4 C.B. Sta. 247+00 632.01  
15" I-2 @ Std. #4 C.B. Sta. 247+00 629.50  
8" I-2 @ Std. #4 C.B. Sta. 247+00 630.08  
15" I-2 @ Outlet 626.69

REF. STATION	SIDE	CLASS 'A' STORM SEWER UNDER PAVT. SEC. M-6.8 (b) OR M-6.8 (c)	8" 15" M-64 (C)	L.I.N. FT.	I-4		I-5		I-10		I-8		E-2	
					6" PIPE UNDER DRAIN (SHALLOW)	6" PIPE UNDER DRAIN (DEEP)	6" 60° INCREASE	6" 60° WYE BEND	DUMPED ROCK CHANNEL PROTECT.	SOODING	CONC. STRUCT. CLASS 'E' BASIN	STD. #4 CATCH BASIN	EXCAV. FOR STRUCT.	
FROM	TO													
I-D 245+00	255+00	LT.	54	10	812	226								
2-D 245+00	255+00	LT.			996									
3-D 245+00	255+00	RT.	50	10	570	196								
4-D 245+00	252+75	RT.	50	148										
5-D 247+00														
6-D 248+32		RT.								62				
TOTALS														

REF. STATION	SIDE	ROADWAY	
		FROM	TO
I-R 248+60	RT.	250+35	250+35
2-R 247+30	RT.	249+30	249+30

REF. STATION	SIDE	PAVEMENT		STRUCTURES	
		STATION	CONC.	STATION	CONC.
I-P 243+91	LT.	243+91	255+00	E-2	243+91
2-P 249+83	RT.	249+83	252+75	E-3	249+83
TOTALS		1377	230	1377	1377

EXCAVATION	=	9,465 C.Y.
EMBANKMENT	=	9,891 C.Y.
EMBANKMENT +20'	=	11,869 C.Y.