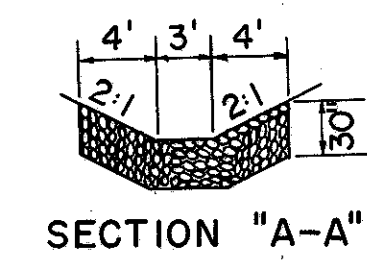


CURVE DATA
LEFT MEDIAN EDGE
Δ = 8° 11' 33" Lt.
D = 1° 00' 00"
R = 5729.58'
L = 819.24'
T = 410.32'

CURVE DATA
RIGHT MEDIAN EDGE
Δ = 9° 58' 27.5" Lt.
D = 1° 30' 00"
R = 3819.72'
L = 664.95'
T = 333.32'

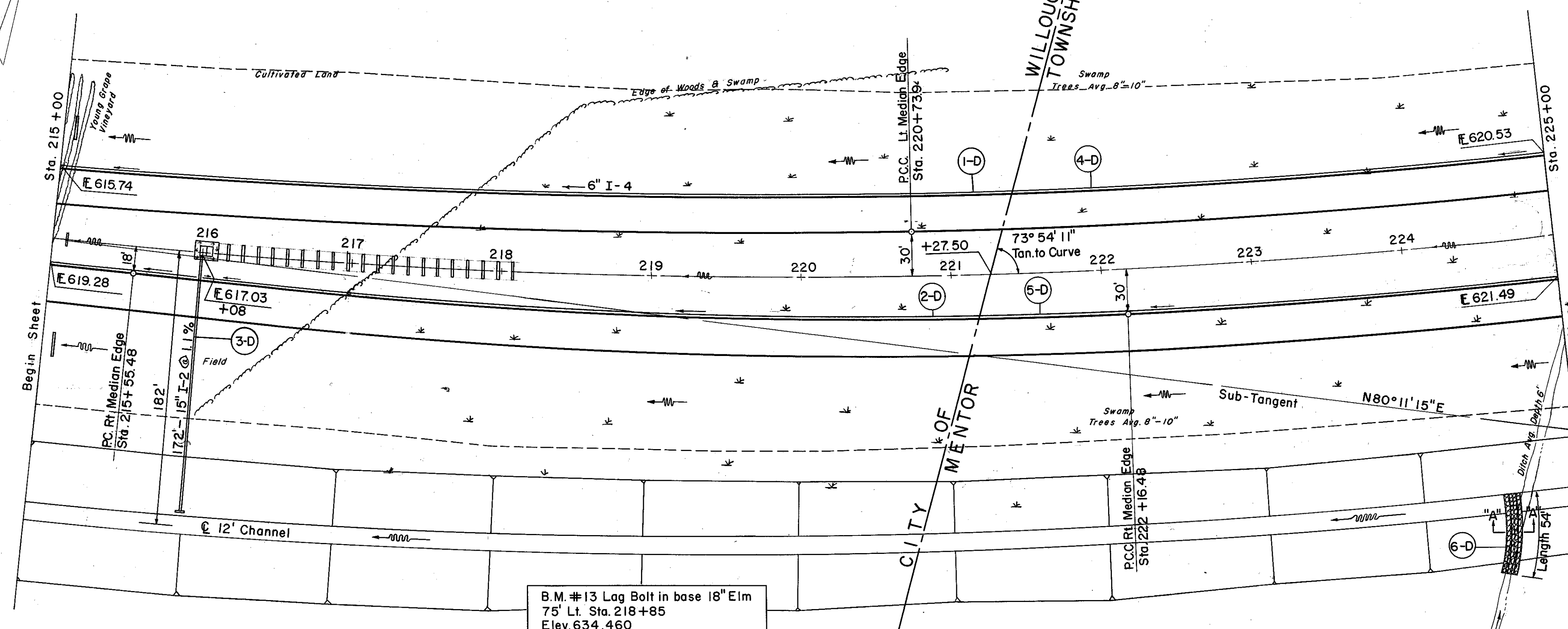
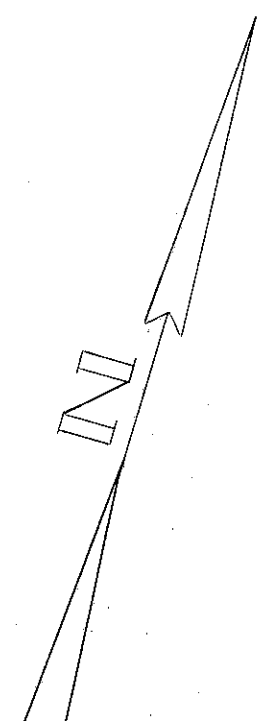
CURVE DATA
P.I. Sta. 229+35.55
Δ = 36° 37' 30" Lt.
D = 1° 15' 00"
R = 4583.66'
L = 2929.95'
T = 1517.01'
E = 244.51'



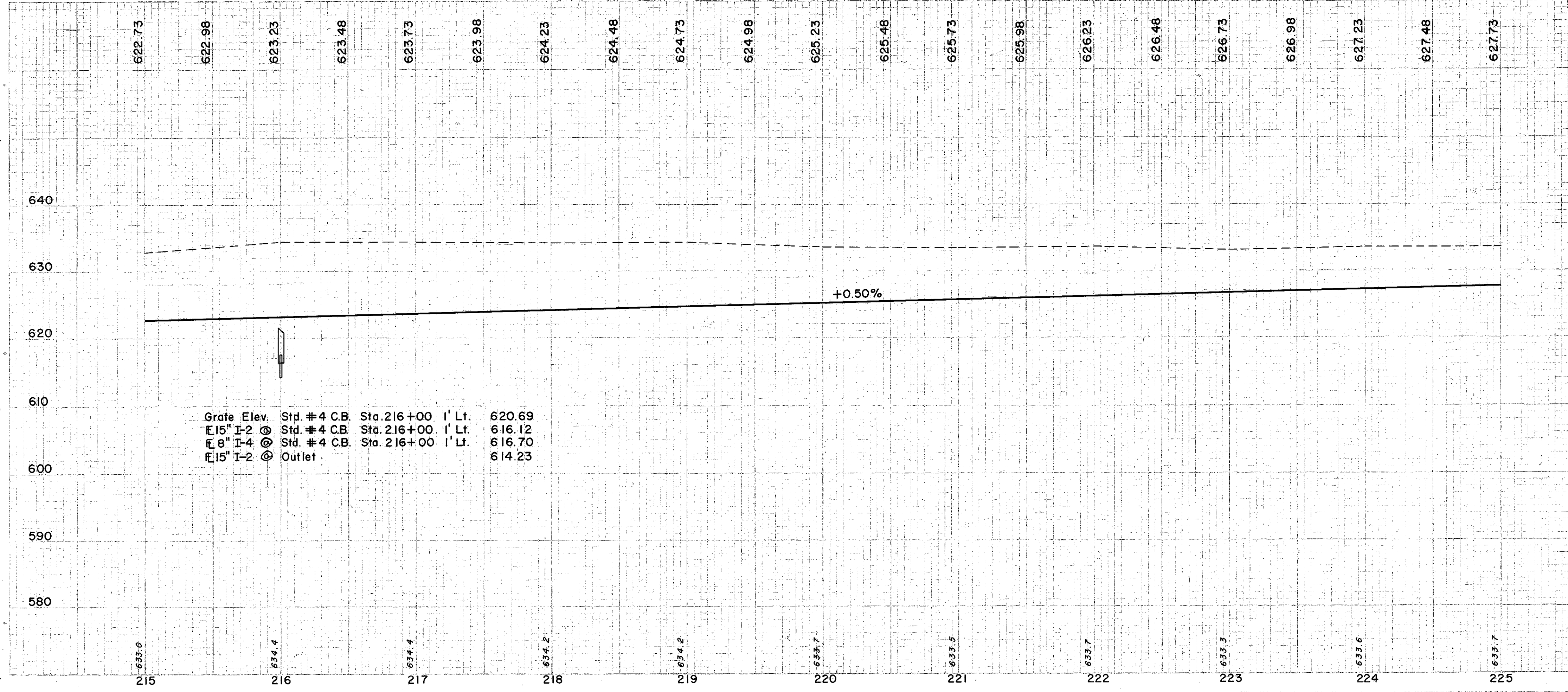
FED. RD. DIVISION	STATE	PROJECT
2	OHIO	U-329 (15) F-329 (15)

29
297

LAKE COUNTY
LAK-2-4.42



B.M. #13 Lag Bolt in base 18" Elm
75' Lt. Sta. 218+85
Elev. 634.460



Grate Elev.	Std. # 4 C.B.	Sta. 216+00	1' Lt.	620.69
E 15" I-2	Std. # 4 C.B.	Sta. 216+00	1' Lt.	616.12
F 9" I-4	Std. # 4 C.B.	Sta. 216+00	1' Lt.	616.70
E 15" I-2	Outlet	Sta. 216+00	1' Lt.	614.23

① DRAINAGE U-329 (15)

REF. NO.	STATION	FROM	TO	DESCRIPTION	EA	S.Y.	C.Y.
I-2	CL 'A' STORM SEWER UNDER PVT. OR APPR. SEC. M-6(G)	15"	L.F.				
I-4	PIPE UNDER DRAIN (DEEP)	6"	L.F.	544			
I-4	PIPE UNDER DRAIN (SHALLOW)	6"	L.F.	525			
I-4	PIPE OUTLET PIPE SEC. M-6.4(G)	8"	L.F.	100	10		
I-8	STD. #4 CATCH BASIN				EA	1	
L-10	SODDING				S.Y.	50	
E-2	EXC. FOR STRUCT.				C.Y.	2	
S-1	CONC. FOR STRUCT. CL 'E'				C.Y.		0.26
I-5	6" 60° WYE						1

② DRAINAGE F-329 (15)

REF. NO.	STATION	FROM	TO	DESCRIPTION	C.Y.
I-4	SIDE				
I-4	PIPE UNDER DRAIN (DEEP)	6"	L.F.	356	
I-4	PIPE UNDER DRAIN (DEEP)	6"	L.F.	380	
I-10	DUMPED ROCK CHANNEL PROTECT.				55

EXCAVATION	= 107,280 C.Y.
EMBANKMENT	0
EMBANKMENT +20'	0