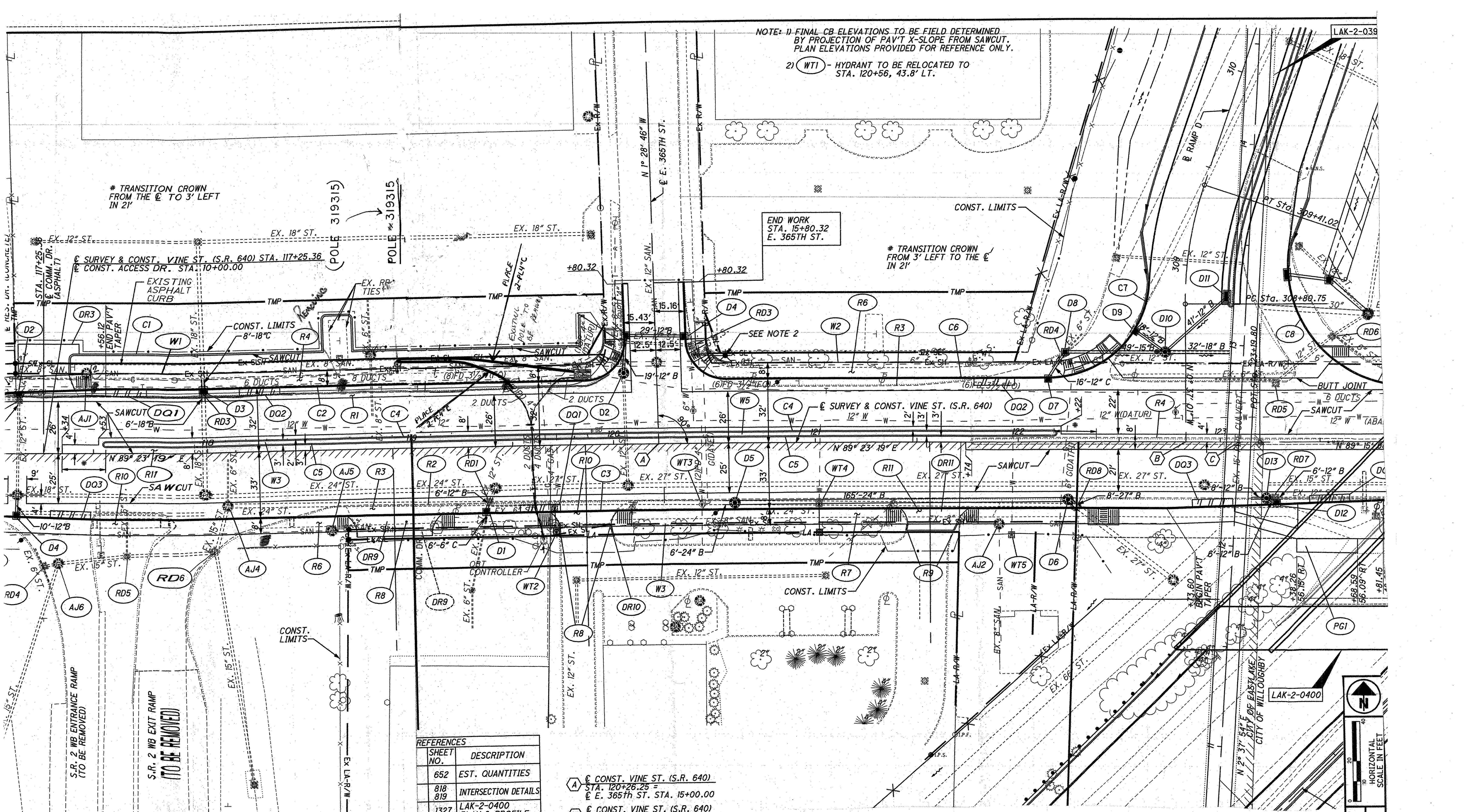


NOTE: 1) FINAL CB ELEVATIONS TO BE FIELD DETERMINED BY PROJECTION OF PAV'T X-SLOPE FROM SAWCUT. PLAN ELEVATIONS PROVIDED FOR REFERENCE ONLY.
2) WT1 - HYDRANT TO BE RELOCATED TO STA. 120+56, 43.8' LT.

TRANSITION CROWN FROM THE C TO 3' LEFT IN 21'

END WORK STA. 15+80.32 E. 365TH ST.

TRANSITION CROWN FROM 3' LEFT TO THE C IN 21'



REFERENCES	
SHEET NO.	DESCRIPTION
652	EST. QUANTITIES
818	INTERSECTION DETAILS
1327	LAK-2-0400 PLAN & PROFILE
95	

- A C CONST. VINE ST. (S.R. 640) STA. 120+26.25 = C E. 365th ST. STA. 15+00.00
- B C CONST. VINE ST. (S.R. 640) STA. 122+83.07 = B RAMP D STA. 308+11.95
- C C CONST. VINE ST. (S.R. 640) STA. 123+09.18 = C CULVERT LAK-2-0395 STA. 12+51.90

650
679

LAK-2-3.32

PLAN - VINE STREET (S.R. 640)
STA. 119+00.00 TO STA. 124+00.00

0 10 20
HORIZONTAL SCALE IN FEET

CALCULATED
CHECKED
ABS

LAK-2-0400

CITY OF EASTLAKE
CITY OF WILLOUGHBY