



CALCULATED
ATR
CHECKED
MVJ

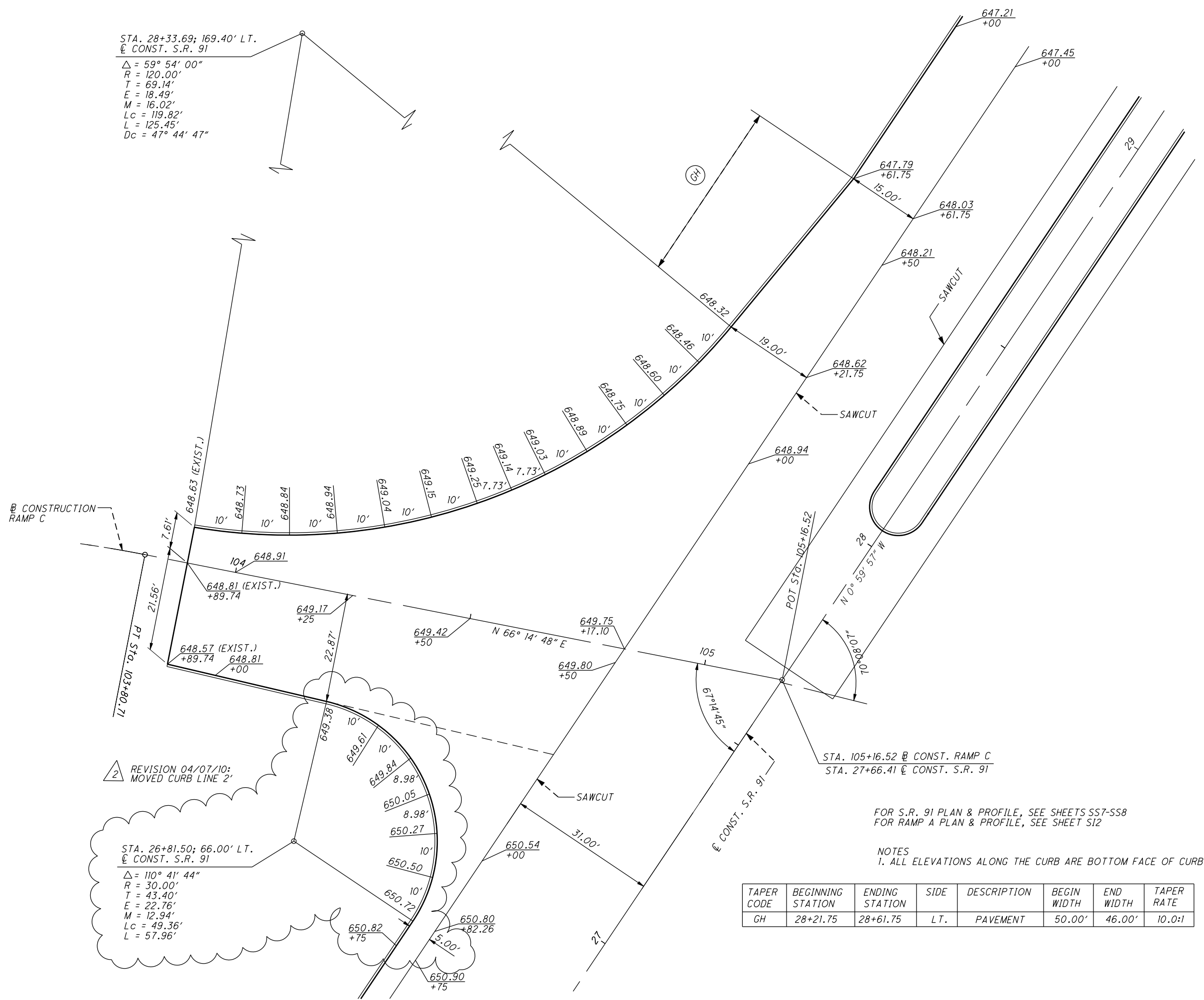
INTERSECTION DETAIL S.R. 91 / RAMP D

LAK-2-3.32

816A
TOTAL

STA. 28+33.69; 169.40' LT.
 @ CONST. S.R. 91
 $\Delta = 59^\circ 54' 00''$
 $R = 120.00'$
 $T = 69.14'$
 $E = 18.49'$
 $M = 16.02'$
 $Lc = 119.82'$
 $L = 125.45'$
 $Dc = 47^\circ 44' 47''$

STA. 26+81.50; 66.00' LT.
 @ CONST. S.R. 91
 $\Delta = 110^\circ 41' 44''$
 $R = 30.00'$
 $T = 43.40'$
 $E = 22.76'$
 $M = 12.94'$
 $Lc = 49.36'$
 $L = 57.96'$



CONSTRUCTION RAMP C

REVISION 04/07/10:
MOVED CURB LINE 2'

FOR S.R. 91 PLAN & PROFILE, SEE SHEETS SS7-SS8
FOR RAMP A PLAN & PROFILE, SEE SHEET S12

NOTES
1. ALL ELEVATIONS ALONG THE CURB ARE BOTTOM FACE OF CURB.

TAPER CODE	BEGINNING STATION	ENDING STATION	SIDE	DESCRIPTION	BEGIN WIDTH	END WIDTH	TAPER RATE
GH	28+21.75	28+61.75	LT.	PAVEMENT	50.00'	46.00'	10.0:1