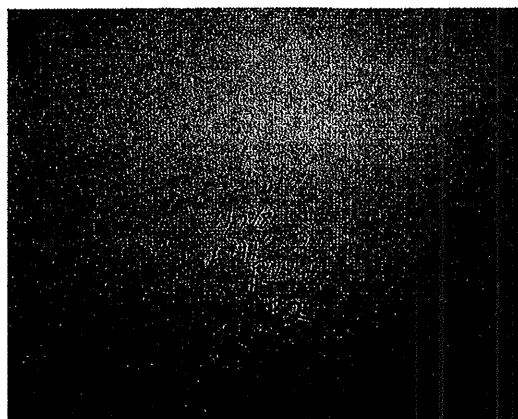


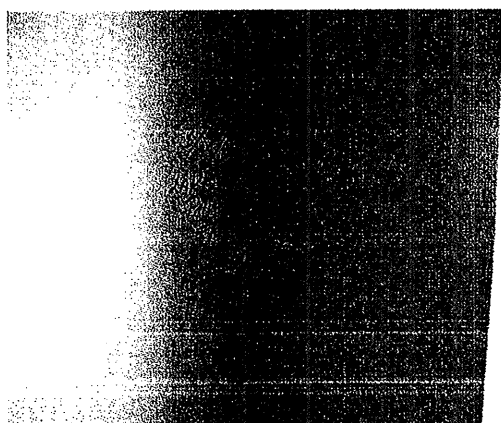
LAK 2 - 3.32 Parcel 9 PID 13486
36628 Vine Street, Eastlake, Ohio



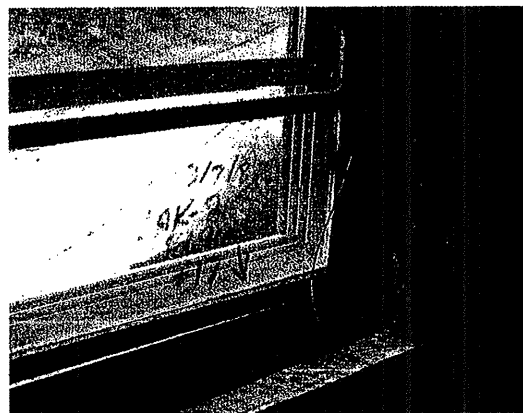
2 sty. Brick/frame commercial house
w/ basement & asphalt shingle roof



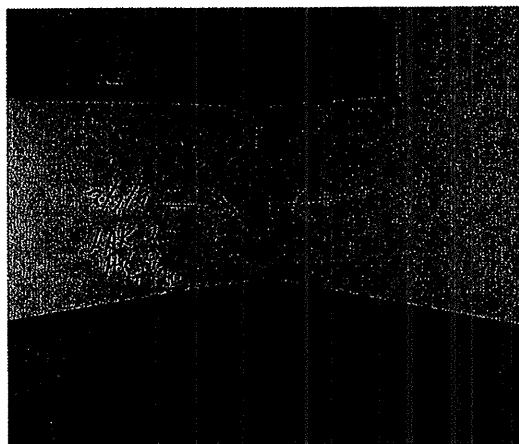
Sample # 2 Plaster, Basement stairs ceiling
2% Chry (PLM) PC .50% Assume ACM



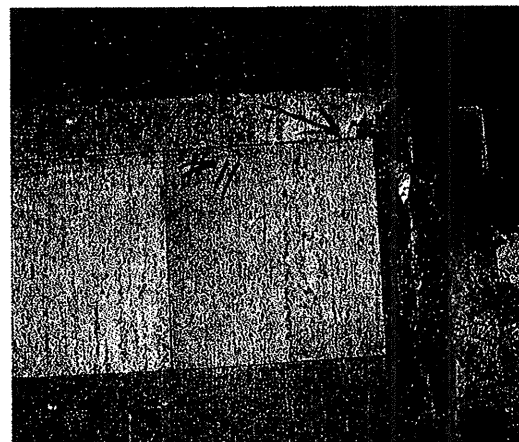
Sample # 19 Plasterboard Joint 1st Flr
2% Chry (PLM) PC .75 Assume ACM



Sample #17 Window Glaze/caulk, 2nd Flr.
Hallway 3% Chry (PLM) PC 2.25% ACM



Sample #20 Plasterboard Corner Joint
2nd Flr. 3%Chry (PLM) PC .50 Assume ACM



Sample #11 Vinyl Flooring Tile&Mastic
3% Chry (PLM) Assume all ACM