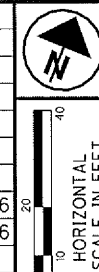


T-9-N, R-10-W
CITY OF WILLOUGHBY
FORMER WILLOUGHBY TOWNSHIP
LAKE COUNTY

REV. BY	DATE	DESCRIPTION
JMM	11/12/07	PARCEL 53 OWNERSHIP CHANGE
FIELD REVIEW BY FRANK T. RAMPS		DATE: 6/6/06
OWNERSHIP VERIFIED BY JAMES M. LOCH		DATE: 6/6/06
DATE COMPLETED 6/9/06		



STRUCTURE KEY

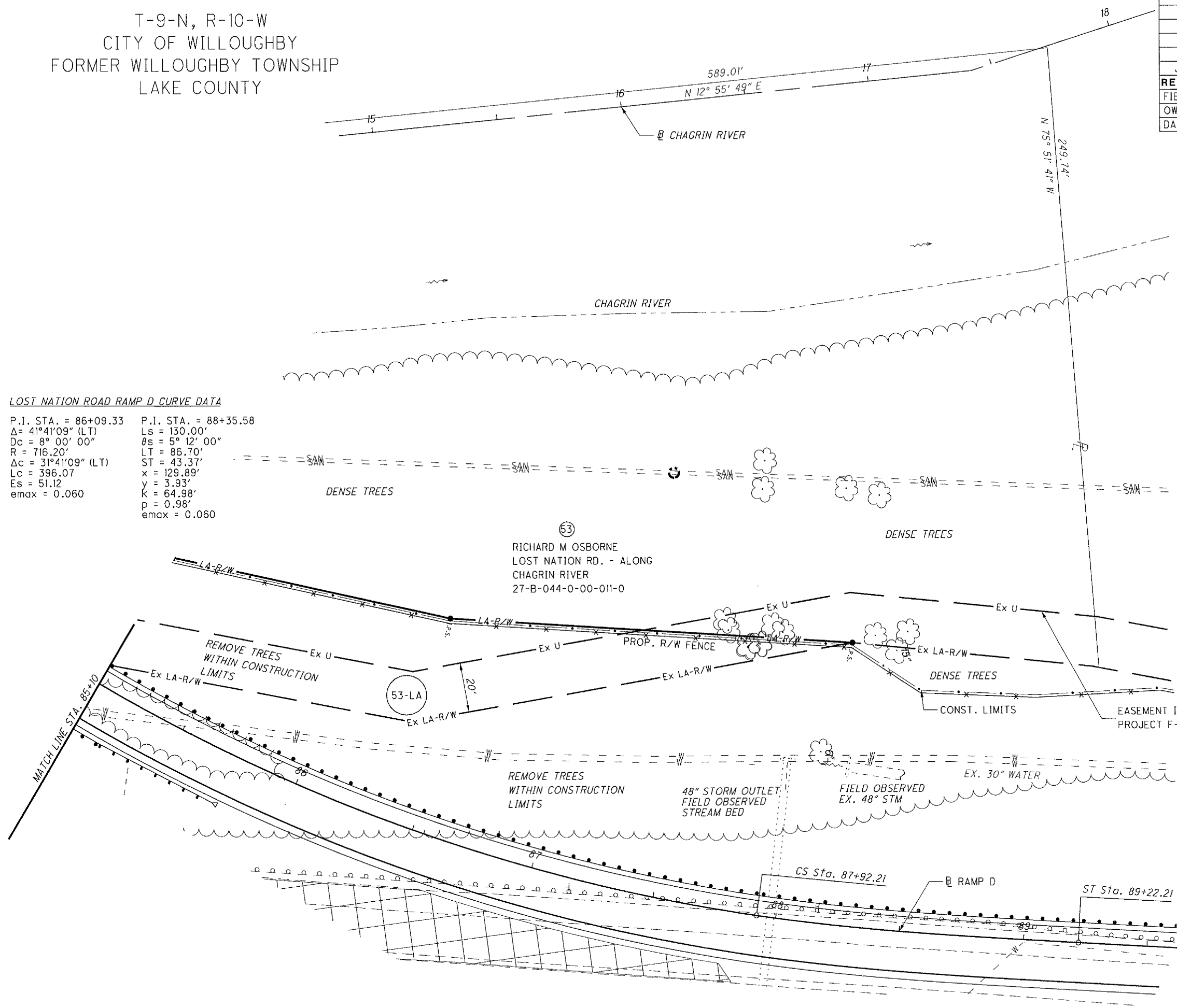
- RESIDENTIAL
- COMMERCIAL
- OUT-BUILDING

MONUMENT LEGEND

- EX. MONUMENT BOX FOUND
- EX. R/W MONUMENT
- I.P. FOUND IRON PIN/REBAR/IRON PIPE/AXLE
- IRON PIN SET W/ ID CAP
1-1/2" ALUMINUM CAP. ODOT R/W DIST. 12

LOST NATION ROAD RAMP D CURVE DATA

P.I. STA. = 86+09.33	P.I. STA. = 88+35.58
$\Delta = 41^{\circ}41'09''$ (LT)	Ls = 130.00'
Dc = 8° 00' 00"	$\theta_s = 5^{\circ} 12' 00''$
R = 716.20'	LT = 86.70'
$\Delta_c = 31^{\circ}41'09''$ (LT)	ST = 43.37'
Lc = 396.07	x = 129.89'
Es = 51.12	y = 3.93'
emax = 0.060	K = 64.98'
	p = 0.98'
	emax = 0.060



MONUMENT LEGEND

- EX. MONUMENT BOX FOUND
- EX. R/W MONUMENT
- I.P. FOUND IRON PIN/REBAR/IRON PIPE/AXLE

EASEMENT IS SHOWN PER LAK-2-4.42 RIGHT OF WAY PLANS, PROJECT F-U-329(15) DATED APRIL 24, 1959.

G:\Project\lck\13486\row\sheets\13486RP25.dgn 12/17/2007 7:01:45 AM jmderic

PID NO.
13486

R/W DESIGNER
JMM
R/W REVIEWER
CAH

R/W TOPO SHEET
RAMP D STA. 85+10 TO STA. 89+50

LAK-2-3.32

48 / 60

1661
1679