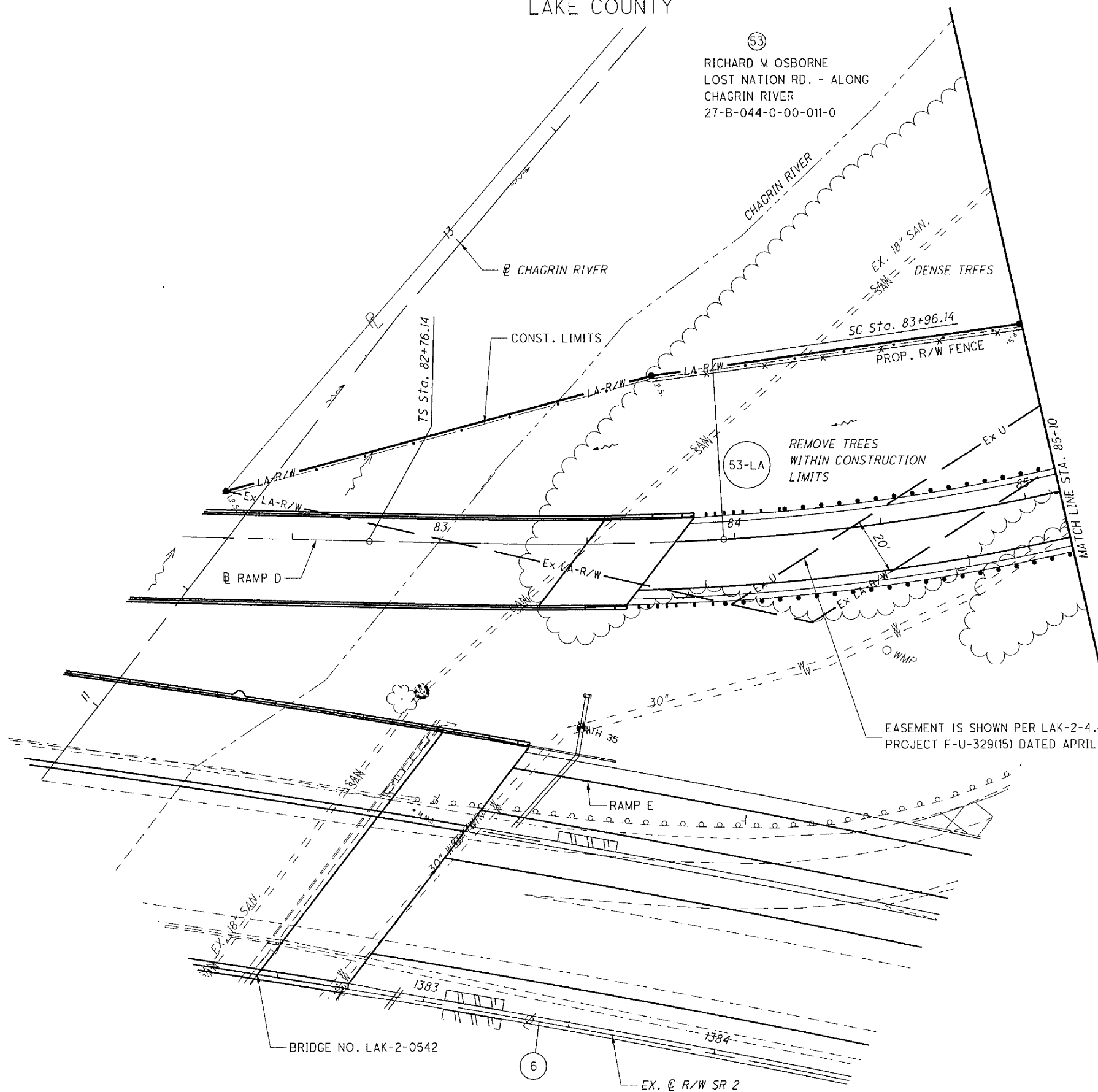


LOST NATION ROAD RAMP D CURVE DATA

P.I. STA. = 83+56.16    P.I. STA. = 86+09.33  
 Ls = 120.00'    Δ = 41°41'09" (LT)  
 θs = 4° 48' 00"    Dc = 8° 00' 00"  
 LT = 80.03'    R = 716.20'  
 ST = 40.03'    Δc = 31°41'09" (LT)  
 x = 119.92'    Lc = 396.07'  
 y = 3.35'    Es = 51.12'  
 k = 59.99'    emax = 0.060  
 p = 0.84'

T-9-N, R-10-W  
 CITY OF WILLOUGHBY  
 FORMER WILLOUGHBY TOWNSHIP  
 LAKE COUNTY



53  
 RICHARD M OSBORNE  
 LOST NATION RD. - ALONG  
 CHAGRIN RIVER  
 27-B-044-0-00-011-0

53-LA  
 REMOVE TREES  
 WITHIN CONSTRUCTION  
 LIMITS

STRUCTURE KEY

- RESIDENTIAL
- COMMERCIAL
- ▨ OUT-BUILDING

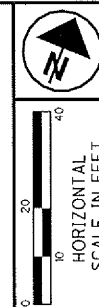
MONUMENT LEGEND

- ⊠ EX. MONUMENT BOX FOUND
- ⊙ EX. R/W MONUMENT
- ⊙ P.F. I.P. FOUND IRON PIN/REBAR/IRON PIPE/AXLE
- I.R.S. IRON PIN SET W/ ID CAP
- 1-1/2" ALUMINUM CAP. ODOT R/W DIST. 12

SR 2 EX. & R/W CURVE DATA

6 P.I. STA. 1381+44.93  
 D = 28°00'06" (RT)  
 Dc = 1°15'00"  
 R = 4,583.66'  
 T = 1,142.91'  
 L = 2,240.14'  
 E = 140.34'  
 C = 2217.91  
 CB = N 65°39'46" E

REV. BY	DATE	DESCRIPTION
JMM	11/12/07	PARCEL 53 OWNERSHIP CHANGE
FIELD REVIEW BY FRANK T. RAMPS		DATE: 6/6/06
OWNERSHIP VERIFIED BY JAMES M. LOCH		DATE: 6/6/06
DATE COMPLETED 6/9/06		



PID NO.  
**13486**  
 R/W DESIGNER: JMM  
 R/W REVIEWER: CAH

R/W TOPO SHEET  
 RAMP D STA. 82+00 TO STA. 85+10

LAK-2-3.32

46 / 60  
 1659  
 1679

G:\Project\lak\13486\row\sheets\13486RP23.dgn 12/17/2007 7:01:03 AM jmoderic