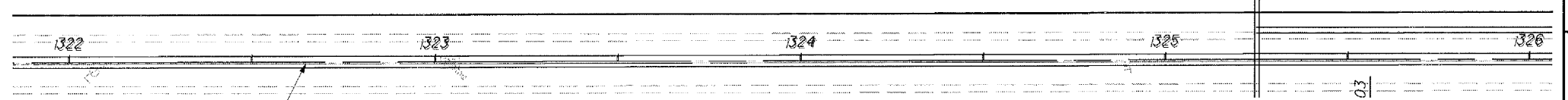


LAKE COUNTY, OHIO
T10N-R10W
CITY OF WILLOUGHBY



EXIST. C R/W SR2

NOTE:
THE EXISTING R/W WIDTH AND LOCATION WERE DETERMINED USING R/W PLANS FROM THE LAK-2-0.00 AND LAK-640-3.444(2.14) PROJECTS ON FILE AT THE OHIO DEPARTMENT OF TRANSPORTATION, DISTRICT 12 OFFICE, AND CENTERLINE PLATS FOR THE LAK-2-0.00 AS RECORDED IN THE LAKE COUNTY RECORDERS OFFICE IN VOLUME M PAGE 70.



PID NO.
13486

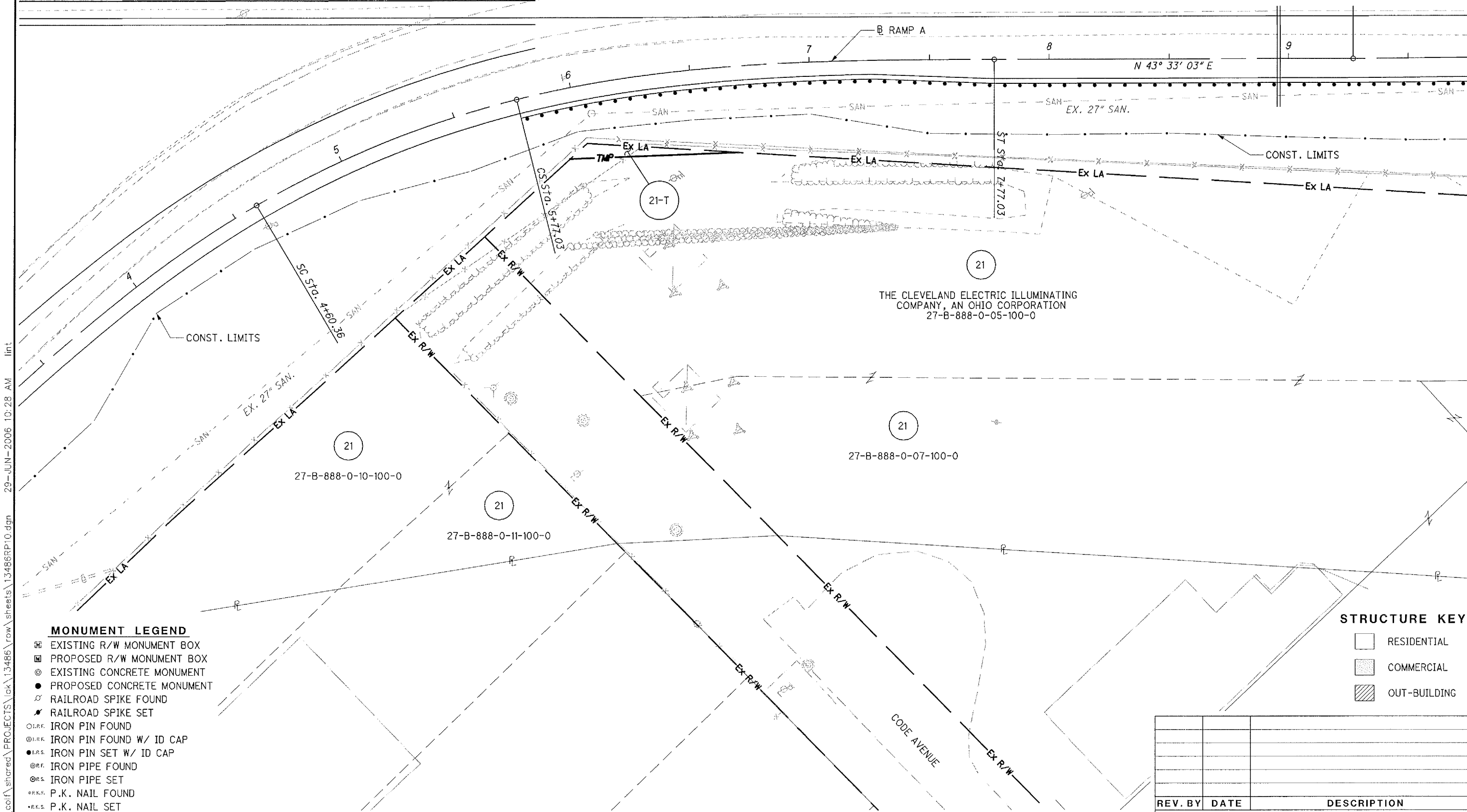
R/W DESIGNER
CAC
R/W REVIEWER
KDO

RIGHT OF WAY TOPO SHEET
S.R. 2 (RIGHT)
STA. 21+00 TO STA. 26+50

LAK-2-3.32

36 / 60

1655
1679



THE CLEVELAND ELECTRIC ILLUMINATING
COMPANY, AN OHIO CORPORATION
27-B-888-0-05-100-0

27-B-888-0-07-100-0

27-B-888-0-10-100-0

27-B-888-0-11-100-0

MONUMENT LEGEND

- ☐ EXISTING R/W MONUMENT BOX
- ▣ PROPOSED R/W MONUMENT BOX
- ⊙ EXISTING CONCRETE MONUMENT
- PROPOSED CONCRETE MONUMENT
- ⚡ RAILROAD SPIKE FOUND
- ⚡ RAILROAD SPIKE SET
- I.P.F. IRON PIN FOUND
- ⊙ I.P.F. IRON PIN FOUND W/ ID CAP
- I.P.S. IRON PIN SET W/ ID CAP
- ⊙ I.P.S. IRON PIPE FOUND
- I.P.S. IRON PIPE SET
- ⊙ P.K.S. P.K. NAIL FOUND
- P.K.S. P.K. NAIL SET

STRUCTURE KEY

- RESIDENTIAL
- ▨ COMMERCIAL
- ▩ OUT-BUILDING

REV. BY	DATE	DESCRIPTION

DATE COMPLETED 6/9/06

29-JUN-2006 10:28 AM
 \coif\shared\PROJECTS\ek\13486\row\sheet\13486RP10.dgn