



HORIZONTAL SCALE IN FEET
0 20 40

P.D. NO. 13486

R/W DESIGNER CAC
R/W REVIEWER KDO

RIGHT OF WAY BOUNDARY SHEET
LAKELAND BLVD. (RIGHT)
STA. 14+00 TO STA. 20+00

LAK-2-3.32
35/60
1654
1679

LAKE COUNTY, OHIO
T10N-R10W
CITY OF WILLOUGHBY
CITY OF EASTLAKE

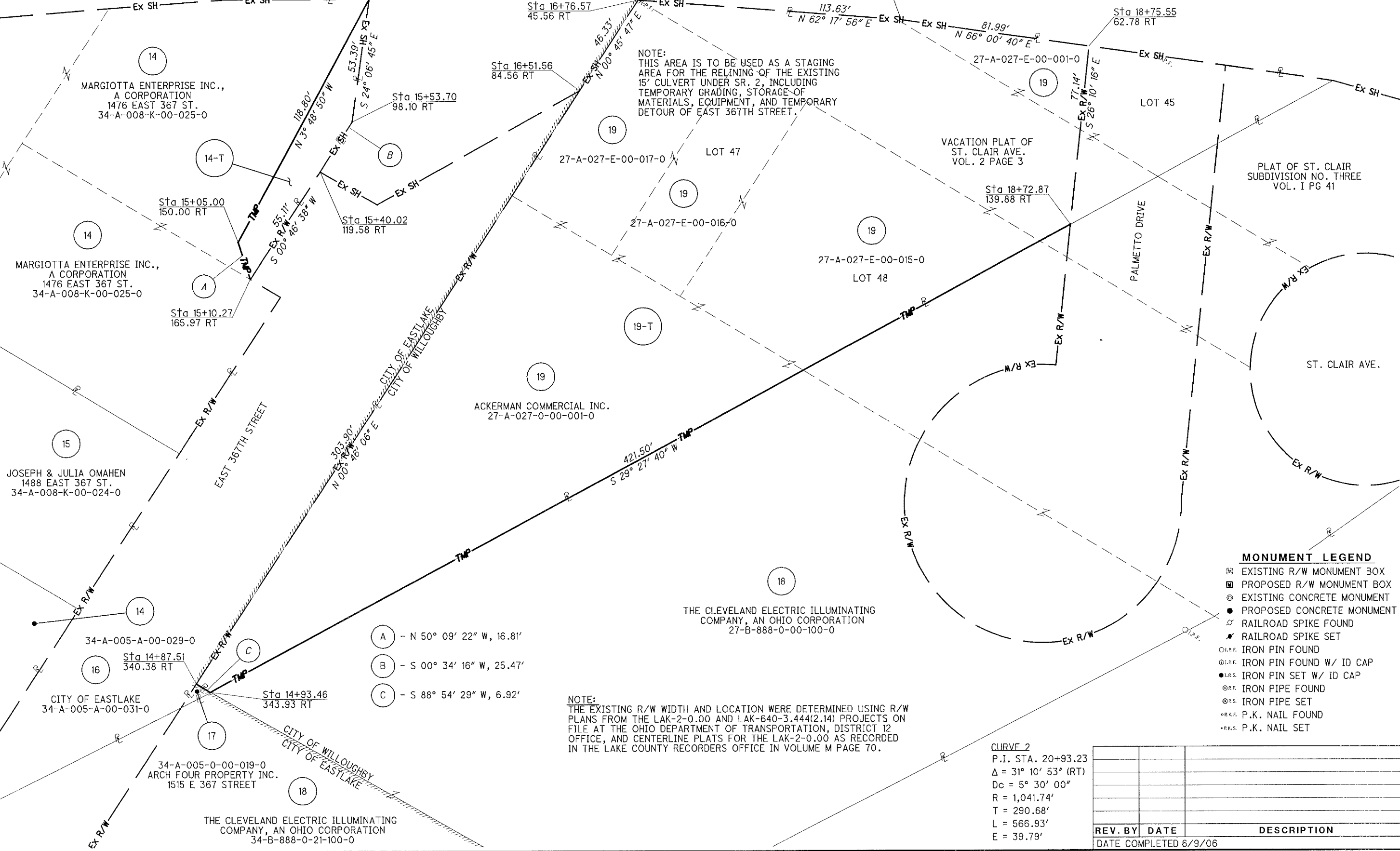
NOTE:
APPROXIMATELY 5 PARKING SPACES IMPACTED BY 14-T, THE ACCESS TO THE NORTH PARKING LOT FROM E. 367TH WILL NOT BE ALLOWED DURING CONSTRUCTION.

BEGIN ACQUISITION STA. 15+05.00

SUSPEND ACQUISITION STA. 18+75.55

NOTE:
THIS AREA IS TO BE USED AS A STAGING AREA FOR THE RELINING OF THE EXISTING 15' CULVERT UNDER SR. 2, INCLUDING TEMPORARY GRADING, STORAGE OF MATERIALS, EQUIPMENT, AND TEMPORARY DETOUR OF EAST 367TH STREET.

NOTE:
THE EXISTING R/W WIDTH AND LOCATION WERE DETERMINED USING R/W PLANS FROM THE LAK-2-0.00 AND LAK-640-3.444(2.14) PROJECTS ON FILE AT THE OHIO DEPARTMENT OF TRANSPORTATION, DISTRICT 12 OFFICE, AND CENTERLINE PLATS FOR THE LAK-2-0.00 AS RECORDED IN THE LAKE COUNTY RECORDERS OFFICE IN VOLUME M PAGE 70.



14
MARGIOTTA ENTERPRISE INC.,
A CORPORATION
1476 EAST 367 ST.
34-A-008-K-00-025-0

14
MARGIOTTA ENTERPRISE INC.,
A CORPORATION
1476 EAST 367 ST.
34-A-008-K-00-025-0

15
JOSEPH & JULIA OMAHEN
1488 EAST 367 ST.
34-A-008-K-00-024-0

19
ACKERMAN COMMERCIAL INC.
27-A-027-0-00-001-0

18
THE CLEVELAND ELECTRIC ILLUMINATING
COMPANY, AN OHIO CORPORATION
27-B-888-0-00-100-0

PLAT OF ST. CLAIR
SUBDIVISION NO. THREE
VOL. 1 PG 41

VACATION PLAT OF
ST. CLAIR AVE.
VOL. 2 PAGE 3

- (A) - N 50° 09' 22" W, 16.81'
- (B) - S 00° 34' 16" W, 25.47'
- (C) - S 88° 54' 29" W, 6.92'

- MONUMENT LEGEND**
- ☐ EXISTING R/W MONUMENT BOX
 - ▣ PROPOSED R/W MONUMENT BOX
 - ⊙ EXISTING CONCRETE MONUMENT
 - PROPOSED CONCRETE MONUMENT
 - ⚡ RAILROAD SPIKE FOUND
 - ⚡ RAILROAD SPIKE SET
 - I.P.F. IRON PIN FOUND
 - I.P.F. IRON PIN FOUND W/ ID CAP
 - I.P.S. IRON PIN SET W/ ID CAP
 - I.P.S. IRON PIPE FOUND
 - I.P.S. IRON PIPE SET
 - P.K.F. P.K. NAIL FOUND
 - P.K.S. P.K. NAIL SET

CURVE 2
 P.I. STA. 20+93.23
 $\Delta = 31^\circ 10' 53''$ (RT)
 $D_c = 5^\circ 30' 00''$
 $R = 1,041.74'$
 $T = 290.68'$
 $L = 566.93'$
 $E = 39.79'$

REV. BY	DATE	DESCRIPTION

DATE COMPLETED 6/9/06

G:\PROJECTS\ck\13486\row\sheet\13486RD07.dgn 29-JUN-2006 10:28 AM lint