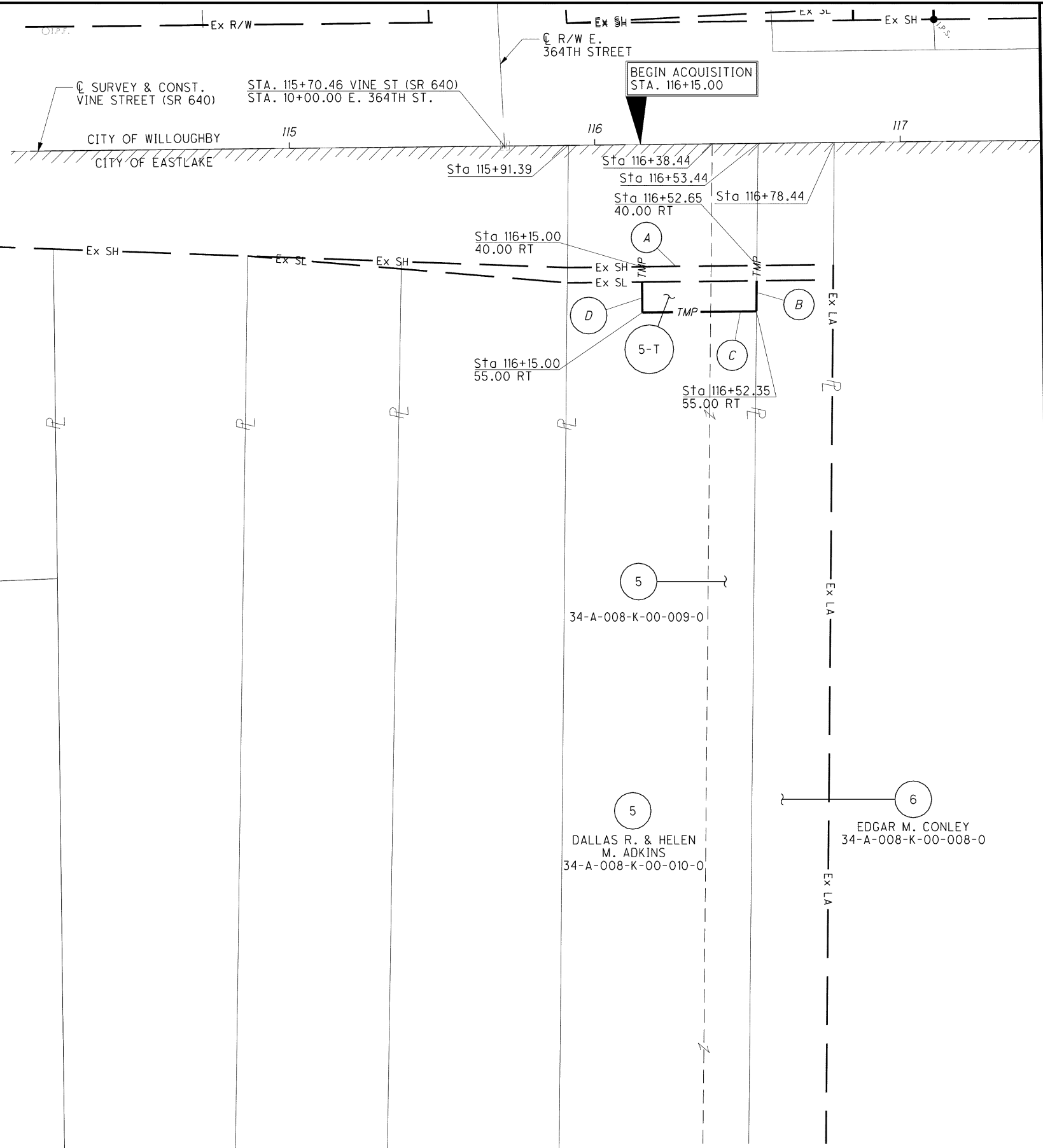


LAKE COUNTY, OHIO
T10N-R10W
CITY OF EASTLAKE



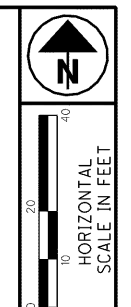
- A - N 89° 23' 19" E, 37.65'
- B - S 00° 31' 34" W, 15.00'
- C - S 89° 23' 19" W, 37.35'
- D - N 00° 36' 41" W, 15.00'

MONUMENT LEGEND

- ▣ EXISTING R/W MONUMENT BOX
- ▣ PROPOSED R/W MONUMENT BOX
- ⊙ EXISTING CONCRETE MONUMENT
- PROPOSED CONCRETE MONUMENT
- ⚡ RAILROAD SPIKE FOUND
- ⚡ RAILROAD SPIKE SET
- I.P.F. IRON PIN FOUND
- I.P.F. IRON PIN FOUND W/ ID CAP
- I.P.S. IRON PIN SET W/ ID CAP
- I.P.F. IRON PIPE FOUND
- I.P.S. IRON PIPE SET
- ⚡ P.K.F. P.K. NAIL FOUND
- ⚡ P.K.S. P.K. NAIL SET

NOTE:
THE EXISTING R/W WIDTH AND LOCATION WERE DETERMINED USING R/W PLANS FROM THE LAK-2-0.00 AND LAK-640-3.444(2.14) PROJECTS ON FILE AT THE OHIO DEPARTMENT OF TRANSPORTATION, DISTRICT 12 OFFICE, AND CENTERLINE PLATS FOR THE LAK-2-0.00 AS RECORDED IN THE LAKE COUNTY RECORDERS OFFICE IN VOLUME M PAGE 70.

MATCH LINE STA. 117+50 SEE SHEET 29 OF 60.



PID NO. **13486**
R/W DESIGNER CAC
R/W REVIEWER KDO

RIGHT OF WAY BOUNDARY SHEET
VINE STREET (RIGHT)
BEGIN ACQUISITION TO STA. 117+50

LAK-2-3.32
27/60
1646
1679

REV. BY	DATE	DESCRIPTION
JMM	6/26/08	REMOVED PROPOSED ACCESS DRIVE
DATE COMPLETED 6/9/06		

C:\Project\LAK\13486\row\sheet\13486RD03.dgn 7/11/2008 8:39:37 AM jmadaria