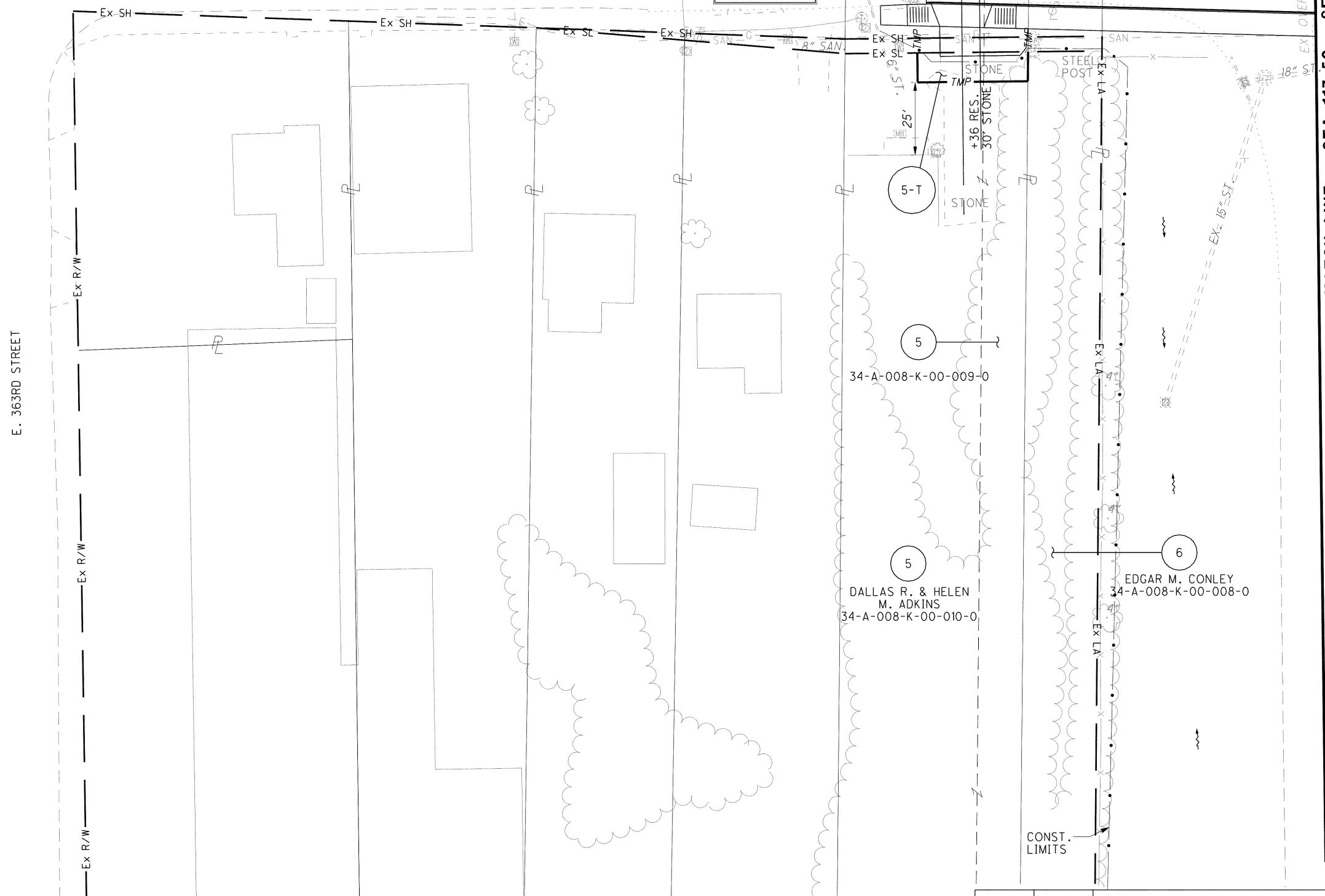
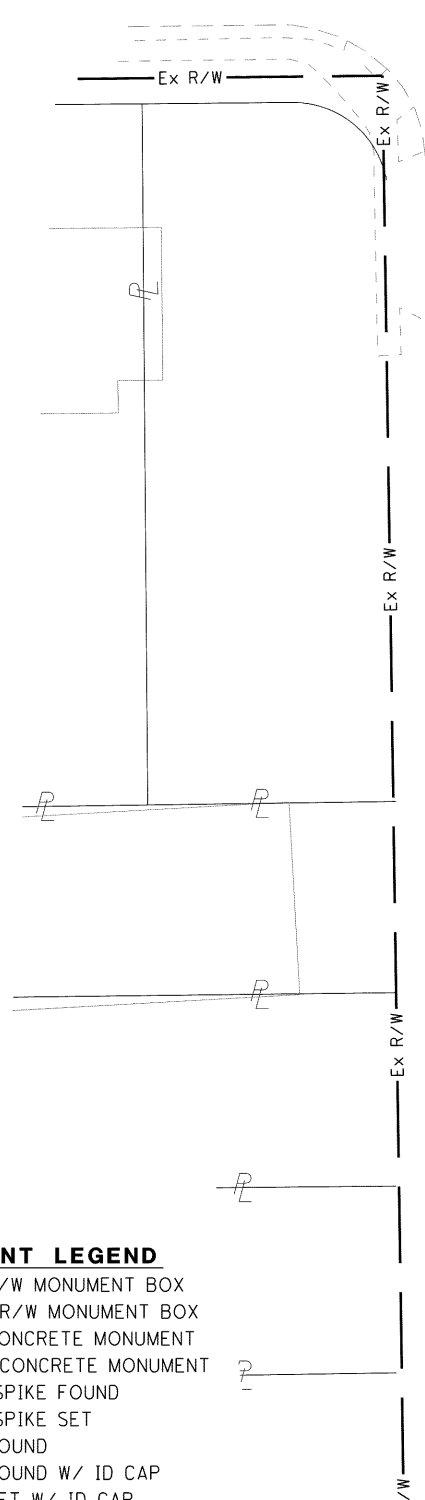
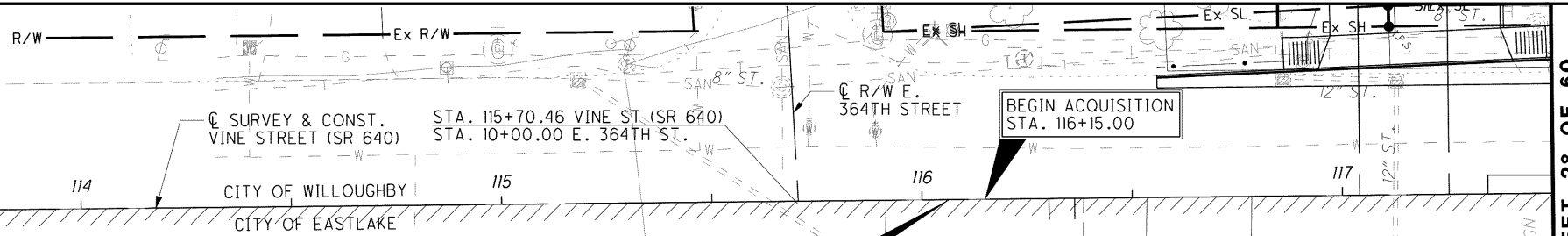


LAKE COUNTY, OHIO
T10N-R10W
CITY OF EASTLAKE



MONUMENT LEGEND

- ▣ EXISTING R/W MONUMENT BOX
- ▣ PROPOSED R/W MONUMENT BOX
- ⊙ EXISTING CONCRETE MONUMENT
- PROPOSED CONCRETE MONUMENT
- ⚡ RAILROAD SPIKE FOUND
- ⚡ RAILROAD SPIKE SET
- I.P.F. IRON PIN FOUND
- I.P.F. IRON PIN FOUND W/ ID CAP
- I.P.S. IRON PIN SET W/ ID CAP
- R.P. IRON PIPE FOUND
- R.P. IRON PIPE SET
- ⚡ P.K.F. P.K. NAIL FOUND
- ⚡ P.K.S. P.K. NAIL SET

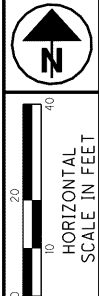
NOTE:
THE EXISTING R/W WIDTH AND LOCATION WERE DETERMINED USING R/W PLANS FROM THE LAK-2-0.00 AND LAK-640-3.444(2.14) PROJECTS ON FILE AT THE OHIO DEPARTMENT OF TRANSPORTATION, DISTRICT 12 OFFICE, AND CENTERLINE PLATS FOR THE LAK-2-0.00 AS RECORDED IN THE LAKE COUNTY RECORDERS OFFICE IN VOLUME M PAGE 70.

STRUCTURE KEY

- RESIDENTIAL
- COMMERCIAL
- ▨ OUT-BUILDING

REV. BY	DATE	DESCRIPTION
JMM	6/26/08	REMOVED PROPOSED ACCESS DRIVE
JMM	6/26/07	PROPOSED ACCESS DRIVE ALIGNMENT ADDED
REV. BY DATE		DESCRIPTION
DATE COMPLETED 6/9/06		

MATCH LINE STA. 117+50 SEE SHEET 28 OF 60.



PID NO.
13486

R/W DESIGNER
CAC
R/W REVIEWER
KDO

**RIGHT OF WAY TOPO SHEET
VINE STREET (RIGHT)
BEGIN ACQUISITION TO STA. 117+50**

LAK-2-3.32

26/60
1645
1679