

LAKE COUNTY, OHIO
T10N-R10W
CITY OF WILLOUGHBY

A.B. BARTO SUBDIVISION NO. 2
VOL. H PG. 96

THE HARVARD LAND COMPANY SUBDIVISION
VOL. K PG. 89
BLOCK "A"

1
BARTELS PROPERTIES LLC
36403 VINE ST
27-B-033-B-00-029-0
LOT 2

2
WILLIAM R. & MARY A. GALLAGHER
36405 VINE STREET
27-B-033-B-00-028-0
LOT 1

3
BDFM COMPANY,
AN OHIO GENERAL PARTNERSHIP
36615 VINE STREET
27-B-033-D-00-018-0
LOT 45

- MONUMENT LEGEND**
- ▭ EXISTING R/W MONUMENT BOX
 - ▭ PROPOSED R/W MONUMENT BOX
 - ⊙ EXISTING CONCRETE MONUMENT
 - PROPOSED CONCRETE MONUMENT
 - ⚡ RAILROAD SPIKE FOUND
 - ⚡ RAILROAD SPIKE SET
 - I.P.F. IRON PIN FOUND
 - I.P.S. IRON PIN FOUND W/ ID CAP
 - I.P.S. IRON PIN SET W/ ID CAP
 - ⊙ I.P.S. IRON PIPE FOUND
 - ⊙ I.P.S. IRON PIPE SET
 - ⊙ P.K.F. P.K. NAIL FOUND
 - ⊙ P.K.S. P.K. NAIL SET



PID NO.
13486

R/W DESIGNER
CAC
R/W REVIEWER
KDO

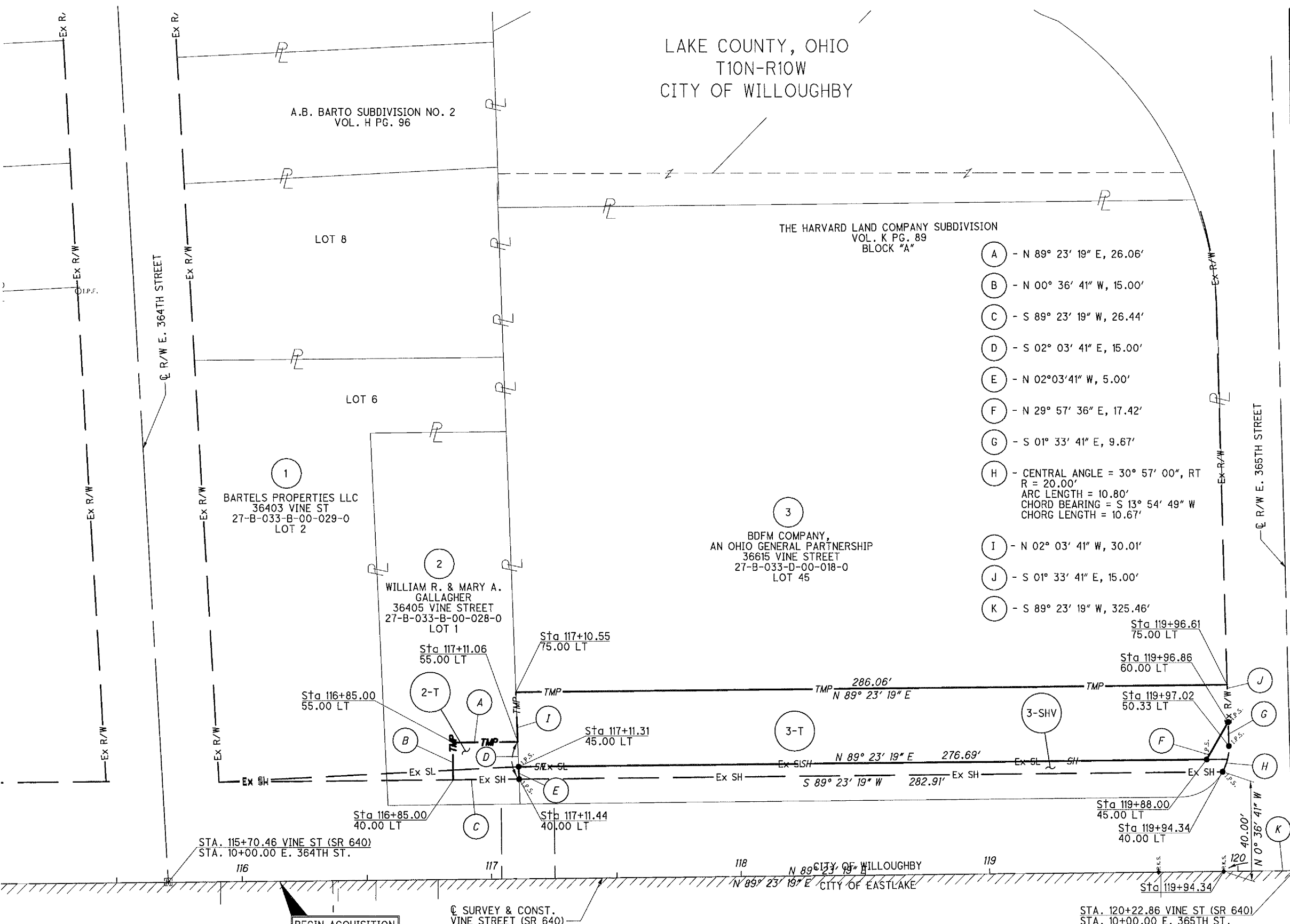
**RIGHT OF WAY BOUNDARY SHEET
VINE STREET (LEFT)
BEGIN ACQUISITION TO STA. 120+25**

LAK-2-3.32

23 / 60

1642
1679

- (A) - N 89° 23' 19" E, 26.06'
- (B) - N 00° 36' 41" W, 15.00'
- (C) - S 89° 23' 19" W, 26.44'
- (D) - S 02° 03' 41" E, 15.00'
- (E) - N 02° 03' 41" W, 5.00'
- (F) - N 29° 57' 36" E, 17.42'
- (G) - S 01° 33' 41" E, 9.67'
- (H) - CENTRAL ANGLE = 30° 57' 00", RT
R = 20.00'
ARC LENGTH = 10.80'
CHORD BEARING = S 13° 54' 49" W
CHORD LENGTH = 10.67'
- (I) - N 02° 03' 41" W, 30.01'
- (J) - S 01° 33' 41" E, 15.00'
- (K) - S 89° 23' 19" W, 325.46'



MATCH LINE STA. 120+25 SEE SHEET 25 OF 60.

PI Sta. 123+19.80
Δ = 00° 07' 21" LT.

J:\LAK\13486\row\sheet\13486RD01.dgn 12-APR-2007 12:07PM lint

NOTE:
THE EXISTING R/W WIDTH AND LOCATION WERE DETERMINED USING R/W PLANS FROM THE LAK-2-0.00 AND LAK-640-3.444(2.14) PROJECTS ON FILE AT THE OHIO DEPARTMENT OF TRANSPORTATION, DISTRICT 12 OFFICE, AND CENTERLINE PLATS FOR THE LAK-2-0.00 AS RECORDED IN THE LAKE COUNTY RECORDERS OFFICE IN VOLUME M PAGE 70.

BEGIN ACQUISITION
STA. 116+15.00

STRUCTURE KEY

- RESIDENTIAL
- COMMERCIAL
- ▨ OUT-BUILDING

REV. BY	DATE	DESCRIPTION

DATE COMPLETED 6/9/06