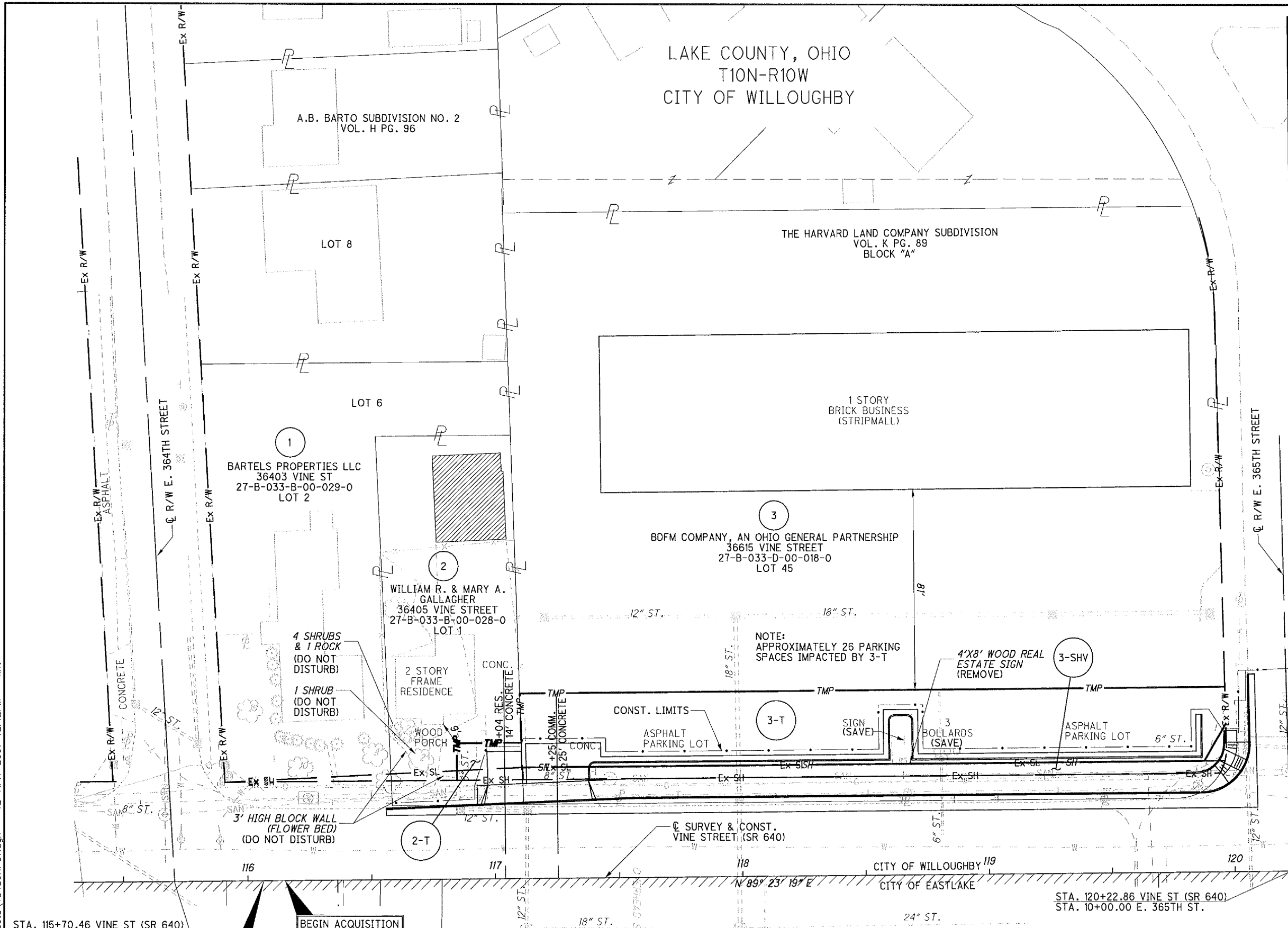


J:\LAK\13486\row\sheet\13486RP01.dgn 12-APR-2007 12:12PM lint



LAKE COUNTY, OHIO
T10N-R10W
CITY OF WILLOUGHBY

A.B. BARTO SUBDIVISION NO. 2
VOL. H PG. 96

THE HARVARD LAND COMPANY SUBDIVISION
VOL. K PG. 89
BLOCK "A"

1
BARTELS PROPERTIES LLC
36403 VINE ST
27-B-033-B-00-029-0
LOT 2

2
WILLIAM R. & MARY A. GALLAGHER
36405 VINE STREET
27-B-033-B-00-028-0
LOT 1

3
BDFM COMPANY, AN OHIO GENERAL PARTNERSHIP
36615 VINE STREET
27-B-033-D-00-018-0
LOT 45

1 STORY
BRICK BUSINESS
(STRIPMALL)

4 SHRUBS & 1 ROCK
(DO NOT DISTURB)
1 SHRUB
(DO NOT DISTURB)

2 STORY
FRAME
RESIDENCE

CONST. LIMITS
ASPHALT
PARKING LOT

NOTE:
APPROXIMATELY 26 PARKING
SPACES IMPACTED BY 3-T

4'X8' WOOD REAL
ESTATE SIGN
(REMOVE)

3-SHV

SIGN
(SAVE)

3
BOLLARDS
(SAVE)

ASPHALT
PARKING LOT

3' HIGH BLOCK WALL
(FLOWER BED)
(DO NOT DISTURB)

CL SURVEY & CONST.
VINE STREET (SR 640)

CITY OF WILLOUGHBY 119
CITY OF EASTLAKE

STA. 120+22.86 VINE ST (SR 640)
STA. 10+00.00 E. 365TH ST.

STA. 115+70.46 VINE ST (SR 640)
STA. 10+00.00 E. 364TH ST.

BEGIN ACQUISITION
STA. 116+15.00

BEGIN WORK
STA. 116+05.94

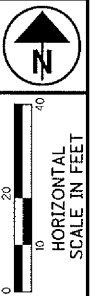
NOTE:
THE EXISTING R/W WIDTH AND LOCATION WERE DETERMINED USING R/W
PLANS FROM THE LAK-2-0.00 AND LAK-640-3.444(2,14) PROJECTS ON
FILE AT THE OHIO DEPARTMENT OF TRANSPORTATION, DISTRICT 12
OFFICE, AND CENTERLINE PLATS FOR THE LAK-2-0.00 AS RECORDED
IN THE LAKE COUNTY RECORDERS OFFICE IN VOLUME M PAGE 70.

STRUCTURE KEY

- RESIDENTIAL
- COMMERCIAL
- OUT-BUILDING

MONUMENT LEGEND

- EXISTING R/W MONUMENT BOX
- PROPOSED R/W MONUMENT BOX
- EXISTING CONCRETE MONUMENT
- PROPOSED CONCRETE MONUMENT
- RAILROAD SPIKE FOUND
- RAILROAD SPIKE SET
- IRON PIN FOUND
- IRON PIN FOUND W/ ID CAP
- IRON PIN SET W/ ID CAP
- IRON PIPE FOUND
- IRON PIPE SET
- P.K. NAIL FOUND
- P.K. NAIL SET



P/D NO.
13486

R/W DESIGNER
CAC
R/W REVIEWER
KDO

RIGHT OF WAY TOPO SHEET
VINE STREET (LEFT)
BEGIN ACQUISITION TO STA. 120+25

LAK-2-3.32

MATCH LINE STA. 120+25 SEE SHEET 24 OF 60.

REV. BY	DATE	DESCRIPTION
JMM	10/19/06	2T - DO NOT DISTURB CALL OUTS
JMM	10/19/06	3SHV - WOOD REAL ESTATE SIGN CALLOUT
DATE COMPLETED 6/9/06		

22 / 60
1641
1679