

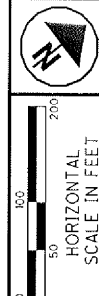
CONVENTIONAL SIGNS

- County Line ————
- Township Line - - - - -
- Section Line - - - - -
- Corporation Line ———— or / / / / /
- Fence Line (existing) ———— (proposed) ————
- Center Line ————
- Trees (to be removed) (to be removed) (to be removed)
- Utility Poles: Telephone ϕ , Power ϕ , Light ϕ
- Right of Way (only) ———— R/W
- Standard Highway Ease. ———— SH
- Prop. Limited Access R/W ———— LA R/W
- Temp. Right of Way ———— TMP
- Exist. Right of Way ———— Ex R/W
- Exist. Stand. High. Ease. ———— Ex SH
- Exist. Channel Ease. ———— Ex CH
- Exist. Utility Ease. ———— Ex U
- Exist. Limited Access R/W ———— Ex LA R/W
- Property Line ———— (in existing fence) ————
- Ownership Hook ————
- Railroad ———— or ————
- Guardrail (existing) ———— (proposed) ————
- Construction Limits ————

PROPERTY OWNERS

- 52 BOARD OF PARKS COMMISSIONERS, LAKE METROPARKS
- 53 RICHARD M OSBORNE

LAKE COUNTY
 CITY OF EASTLAKE AND CITY OF WILLOUGHBY
 FORMER WILLOUGHBY TOWNSHIP
 T-9-N, R-10-W
 AND
 CITY OF MENTOR
 FORMER MENTOR TOWNSHIP
 T-10-N, R-9-W



PID NO. **13486**

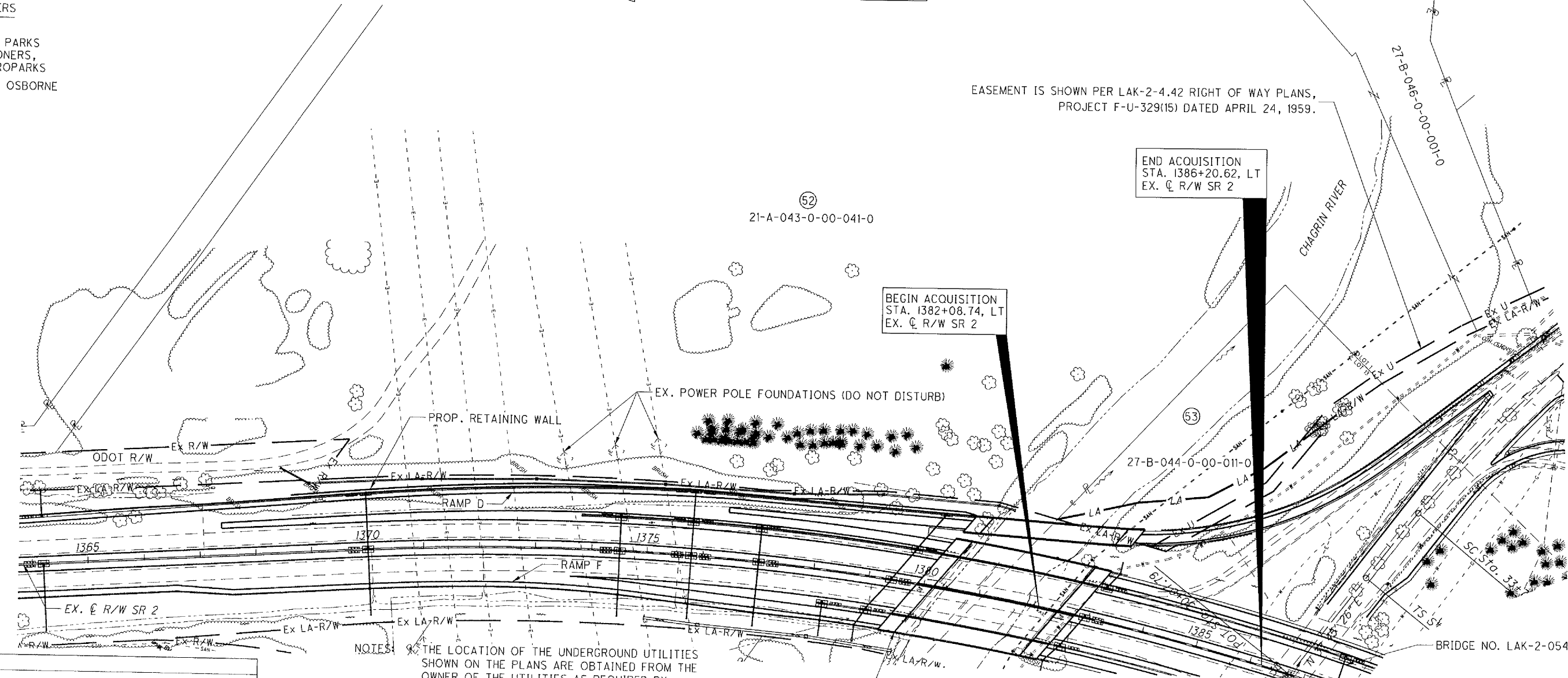
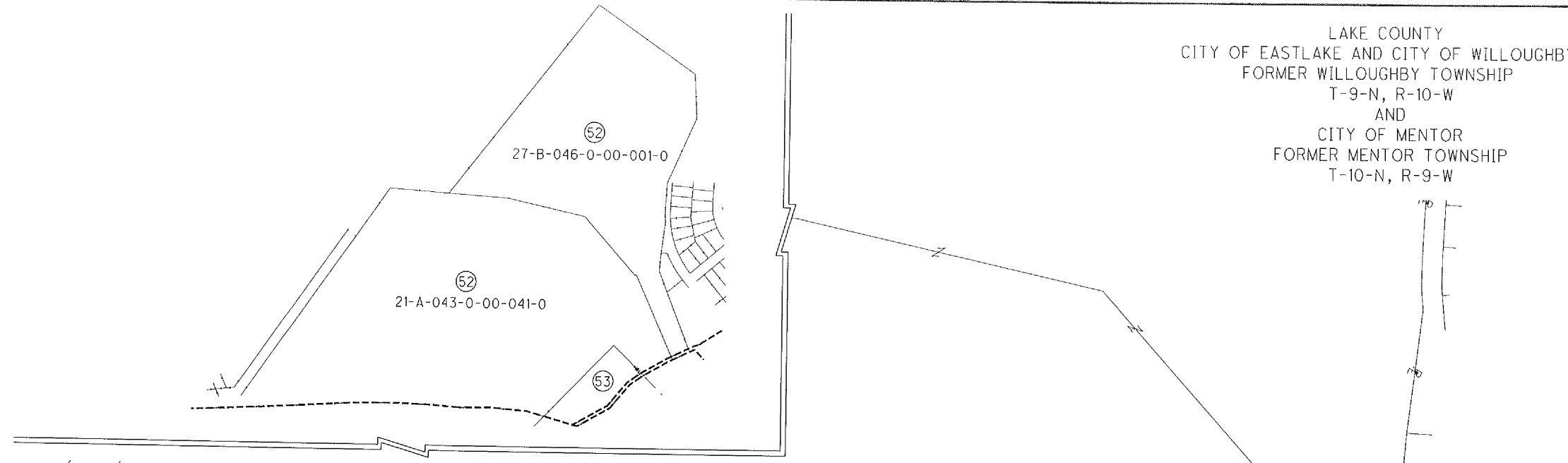
R/W DESIGNER: JMM
 R/W REVIEWER: CAH

PROPERTY MAP
 RAMP D - LOST NATION RD.

LAK-2-3.32

14 / 60

1633
1679



EASEMENT IS SHOWN PER LAK-2-4.42 RIGHT OF WAY PLANS, PROJECT F-U-329(15) DATED APRIL 24, 1959.

END ACQUISITION
 STA. 1386+20.62, LT
 EX. ϕ R/W SR 2

BEGIN ACQUISITION
 STA. 1382+08.74, LT
 EX. ϕ R/W SR 2

NOTES: THE LOCATION OF THE UNDERGROUND UTILITIES SHOWN ON THE PLANS ARE OBTAINED FROM THE OWNER OF THE UTILITIES AS REQUIRED BY SECTION 153.64 O.R.C.

REFERENCE POINT INFORMATION IS CONTAINED IN THE CONSTRUCTION PLAN.

SEE SHEET 13 FOR A LIST OF UTILITY OWNERS WITHIN THE PROJECT LIMITS.

STA. 1386+73.87 EX. ϕ R/W S.R. 2 =
 STA. 30+07.79 EX. ϕ R/W LOST NATION ROAD

STRUCTURE KEY

- RESIDENTIAL
- COMMERCIAL
- OUT-BUILDING

G:\Project\lak\13486\row\sheet\13486RM03.dgn 11/28/2007 2:19:41 PM jmoderica

REV. BY	DATE	DESCRIPTION
JMM	11/12/07	PARCEL 53 OWNERSHIP CHANGE
DATE COMPLETED 6/9/06		