

CONVENTIONAL SIGNS

- County Line
- Township Line
- Section Line
- Corporation Line
- Fence Line (existing) (proposed)
- Center Line
- Trees , Stumps (to be removed)
- Utility Poles: Telephone , Power , Light
- Right of Way (only) R/W
- Standard Highway Ease. SH
- Prop. Limited Access R/W LA R/W
- Temp. Right of Way TMP
- Exist. Right of Way Ex R/W
- Exist. Stand. High. Ease. Ex SH
- Exist. Channel Ease. Ex CH
- Exist. Utility Ease. Ex U
- Exist. Limited Access R/W Ex LA R/W
- Property Line (in existing fence)
- Ownership Hook
- Railroad or
- Guardrail (existing) (proposed)
- Construction Limits

STRUCTURE KEY

- RESIDENTIAL
- COMMERCIAL
- OUT-BUILDING

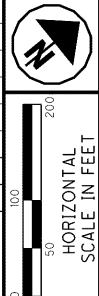
NOTES: THE LOCATION OF THE UNDERGROUND UTILITIES SHOWN ON THE PLANS ARE OBTAINED FROM THE OWNER OF THE UTILITIES AS REQUIRED BY SECTION 153.64 O.R.C.

REFERENCE POINT INFORMATION IS CONTAINED IN THE CONSTRUCTION PLAN.

SEE SHEET 13 FOR A LIST OF UTILITY OWNERS WITHIN THE PROJECT LIMITS.

REV. BY	DATE	DESCRIPTION
JMM	6-26-08	PCL. 8 - REMOVE PORTION OF TEMP. ESMT
JMM	3-1-07	PROPOSED R/W CHANGED ON PARCEL 9
JMM	1-23-07	RESUME ACQUISITION CHANGED ON VINE ST.
JMM	12-1-06	EXISTING BUILDINGS ADDED TO PARCEL 19
DATE COMPLETED 6/9/06		

LAKE COUNTY
CITY OF EASTLAKE AND CITY OF WILLOUGHBY
FORMER WILLOUGHBY TOWNSHIP
T-9-N, R-10-W
AND
CITY OF MENTOR
FORMER MENTOR TOWNSHIP
T-10-N, R-9-W



PID NO. **13486**

R/W DESIGNER: JMM
R/W REVIEWER: CAH

**PROPERTY MAP
VINE STREET INTERCHANGE**

LAK-2-3.32

12 / 60

1631
1679

PROPERTY OWNERS

- ① BARTELS PROPERTIES LLC
27-B-033-B-00-029-0
- ② WILLIAM R. GALLAGHER AND MARY A. GALLAGHER
27-B-033-B-00-028-0
- ③ BDFM COMPANY, AN OHIO GENERAL PARTNERSHIP
27-B-033-D-00-018-0
- ④ BDFM COMPANY, AN OHIO PARTNERSHIP
27-B-033-D-00-017-0
- ⑤ DALLAS R. ADKINS AND HELEN M. ADKINS
34-A-008-K-00-009-0
34-A-008-K-00-010-0
- ⑥ EDGAR M. CONLEY
34-A-008-K-00-008-0
- ⑦ EDGAR CONLEY
34-A-008-K-00-007-0
- ⑧ EASTLAKE COMPASS LLC
34-A-008-K-00-004-0
34-A-008-K-00-003-0
34-A-008-K-00-005-0
34-A-008-K-00-006-0
- ⑨ JOHN H. GEDEON JR.
34-A-008-K-00-002-0
- ⑩ AYRES PROPERTIES INC., AN OHIO CORPORATION
27-B-034-A-00-001-0
27-B-034-A-00-002-0
27-B-034-A-00-026-0
27-B-034-A-00-002-0
27-B-034-A-00-001-0
27-B-034-A-00-001-0
- ⑪ SANDRA J. FIGLER, TRUSTEE UNDER AGREEMENT WITH SANDRA J. FIGLER, DATED NOV. 15, 2000
27-A-027-O-00-008-0
27-A-027-C-00-001-0
- ⑫ BHOLUPIR ONE INC.
27-A-027-C-00-002-0
27-A-027-C-00-003-0
27-A-027-C-00-004-0
- ⑬ CITY OF WILLOUGHBY
27-A-027-O-00-003-0
- ⑭ MARGIOTTA ENTERPRISE INC., A CORPORATION
34-A-008-K-00-025-0
34-A-008-K-00-020-0
34-A-008-K-00-029-0
- ⑮ JOSEPH OMAHEN AND JULIE OMAHEN
34-A-008-K-00-024-0
- ⑯ NOT USED
- ⑰ ARCH FOUR PROPERTY, LLC
34-A-005-O-00-019-0
- ⑱ THE CLEVELAND ELECTRIC ILLUMINATING COMPANY, AN OHIO CORPORATION
27-B-888-O-00-100-0
34-B-888-O-21-100-0
- ⑲ ACKERMAN COMMERCIAL INC.
27-A-027-O-00-001-0
27-A-027-E-00-017-0
27-A-027-E-00-016-0
27-A-027-E-00-015-0
27-A-027-E-00-001-0
- ⑳ CITY OF WILLOUGHBY
27-B-027-O-00-001-0
27-B-033-A-00-002-0
- ㉑ THE CLEVELAND ELECTRIC ILLUMINATING COMPANY, AN OHIO CORPORATION
27-B-888-O-05-100-0

BEGIN PROJECT
STA. 1276+00.00
EX. $\text{\textcircled{C}}$ R/W SR 640

BEGIN ACQUISITION
STA. 116+15.00, RT
EX. $\text{\textcircled{C}}$ R/W SR 640

BEGIN WORK
STA. 116+05.94, LT
 $\text{\textcircled{C}}$ R/W SR 640

BEGIN ACQUISITION
STA. 116+15.00, LT
EX. $\text{\textcircled{C}}$ R/W SR 640

SUSPEND ACQUISITION
STA. 122+28.84, LT
EX. $\text{\textcircled{C}}$ R/W SR 640

RESUME ACQUISITION
STA. 131+36.94, LT
EX. $\text{\textcircled{C}}$ R/W SR 640

END ACQUISITION
STA. 134+85.00, LT
EX. $\text{\textcircled{C}}$ R/W SR 640

RESUME ACQUISITION
STA. 124+85.90, LT
EX. $\text{\textcircled{C}}$ R/W LAKELAND BLVD.

BEGIN ACQUISITION
STA. 15+05.00
 $\text{\textcircled{C}}$ R/W LAKELAND BLVD

BEGIN WORK
STA. 15+07.06
 $\text{\textcircled{C}}$ R/W LAKELAND BLVD

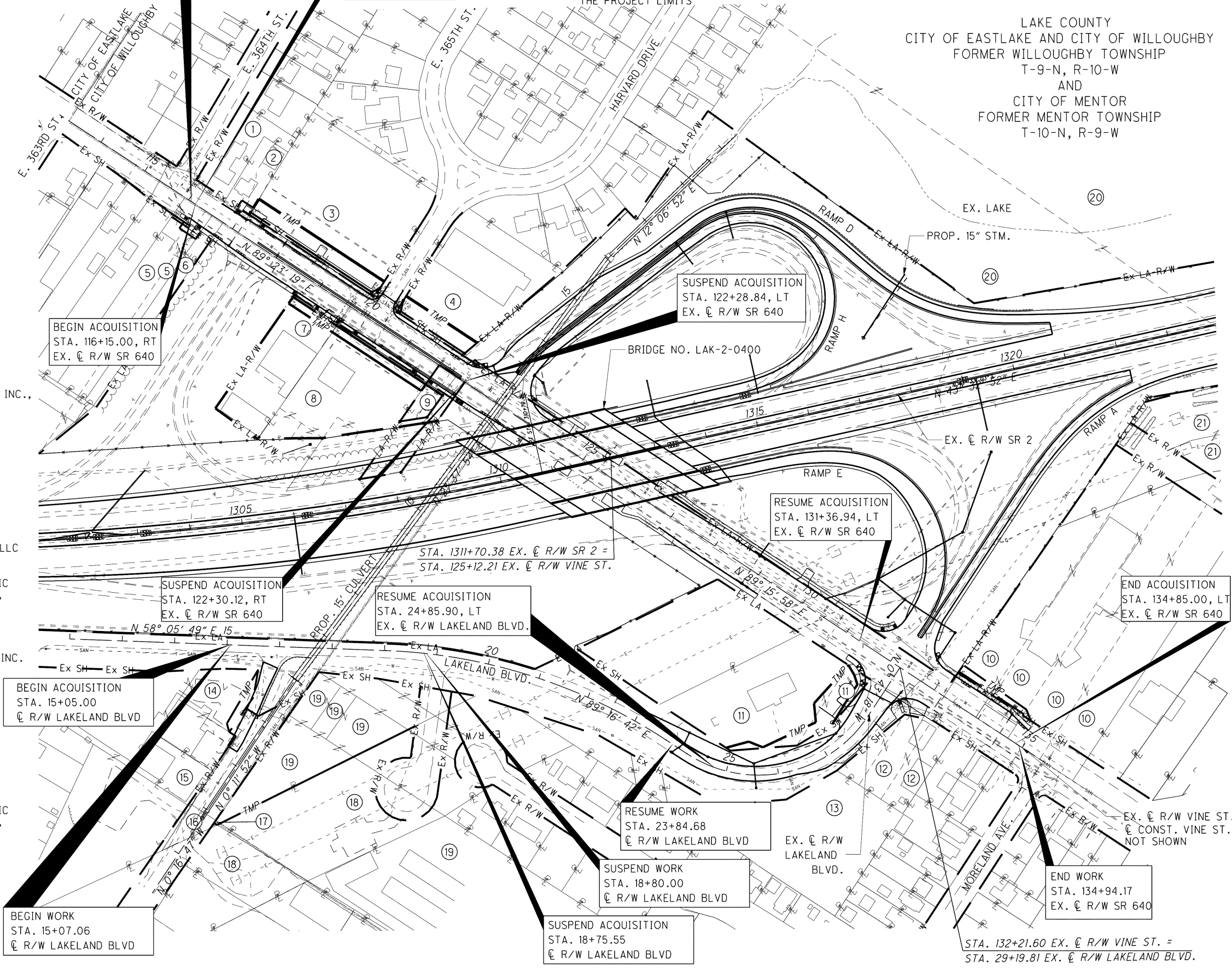
SUSPEND ACQUISITION
STA. 18+75.55
 $\text{\textcircled{C}}$ R/W LAKELAND BLVD

SUSPEND WORK
STA. 18+80.00
 $\text{\textcircled{C}}$ R/W LAKELAND BLVD

RESUME WORK
STA. 23+84.68
 $\text{\textcircled{C}}$ R/W LAKELAND BLVD

END WORK
STA. 134+94.17
EX. $\text{\textcircled{C}}$ R/W SR 640

STA. 132+21.60 EX. $\text{\textcircled{C}}$ R/W VINE ST. =
STA. 29+19.81 EX. $\text{\textcircled{C}}$ R/W LAKELAND BLVD.



G:\Project\LAK\13486\row\sheet\13486R01.dgn 7/11/2008 8:32:14 AM fmoderia