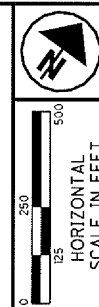


SEE SHEETS 6 AND 8 FOR PROPOSED R/W MONUMENT INFORMATION ON SR 2.  
 SEE SHEET 9 FOR EXISTING AND PROPOSED R/W MONUMENT INFORMATION ON REYNOLDS ROAD (SR 306).

LAKE COUNTY  
 CITY OF EASTLAKE AND CITY OF WILLOUGHBY  
 FORMER WILLOUGHBY TOWNSHIP  
 T-9-N, R-10-W  
 AND  
 CITY OF MENTOR  
 FORMER MENTOR TOWNSHIP  
 T-10-N, R-9-W

- MONUMENT LEGEND**
- ▣ EXISTING R/W MONUMENT BOX
  - ▣ PROPOSED R/W MONUMENT BOX
  - ⊙ SURVEY CONTROL MONUMENT
  - PROPOSED CONCRETE MONUMENT
  - ⊗ RAILROAD SPIKE FOUND
  - ⊗ RAILROAD SPIKE SET
  - I.R.S. IRON PIN SET W/ ID CAP
  - ⊗ I.R.P. IRON PIPE FOUND, AS NOTED
  - ⊗ P.K. NAIL FOUND
  - ⊗ P.K. NAIL SET

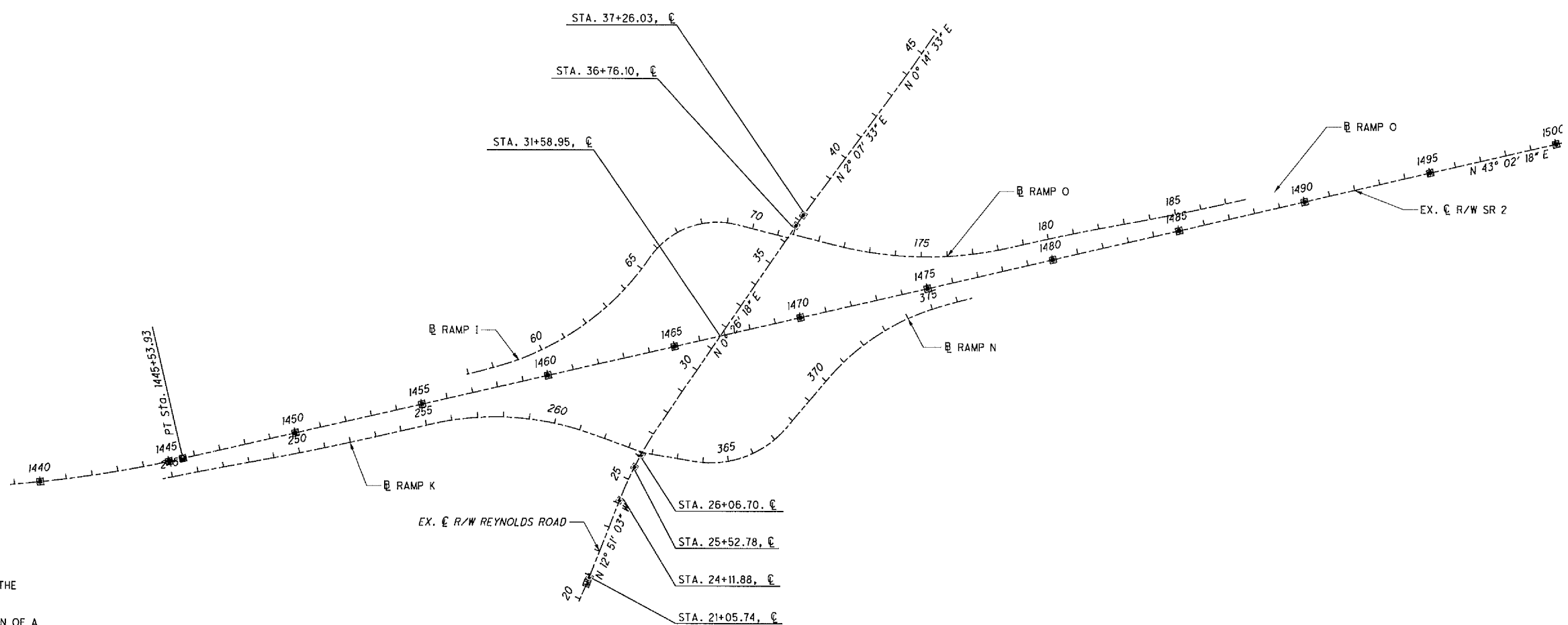


PID NO. **13486**  
 R/W DESIGNER: JMM  
 R/W REVIEWER: CAH

CENTERLINE PLAT  
 REYNOLDS RD. RAMP CONSTRUCTION

LAK-2-3.32

7/11  
 7/60  
 1626  
 1679



**BASIS FOR BEARINGS:**

COORDINATES SHOWN ARE SURFACE COORDINATES, OHIO STATE PLANE COORDINATE SYSTEM, NORTH ZONE, NAD 1983 (CORS 95)

COMBINED SCALE FACTOR TO CONVERT SURFACE COORDINATES TO GRID COORDINATES - 0.99997719

THE PROPOSED RIGHT OF WAY SHALL BE REFERENCED FROM THE CENTERLINE OF RIGHT OF WAY.

THE PLACING OF MONUMENTS SHALL BE UNDER THE DIRECTION OF A SURVEYOR REGISTERED IN THE STATE OF OHIO. THE CENTERLINE MONUMENT ASSEMBLY BOXES WILL BE INSTALLED BY THE HIGHWAY CONTRACTOR AT THE TIME OF CONSTRUCTION. THE IRON PIN WITH CAP MARKING THE ACTUAL CENTERLINE STATION POINT AND ANY REFERENCE MONUMENTS ARE TO BE SET BY THE RIGHT OF WAY DESIGN CONSULTANT.

CHANGES OR ALTERATIONS TO THE LOCATION OF ANY MONUMENTS SHOWN ON THIS PLAT REQUIRE PRIOR APPROVAL OF THE DISTRICT REAL ESTATE ADMINISTRATOR OF THE OHIO DEPARTMENT OF TRANSPORTATION. A REVISED CENTERLINE PLAT WITH THE NEW LOCATIONS SHALL BE RECORDED IN THE APPLICABLE COUNTY RECORDS AND THE OHIO DEPARTMENT OF TRANSPORTATION. SPECIFICATIONS FOR CENTERLINE MONUMENTS, REFERENCE MONUMENTS AND RIGHT OF WAY MONUMENTS ARE SHOWN ON STANDARD CONSTRUCTION DRAWING RM-1.1 OF THE OHIO DEPARTMENT OF TRANSPORTATION.

I HEREBY CERTIFY THAT THIS PLAT IS A TRUE DELINEATION OF A SURVEY MADE FOR THE OHIO DEPARTMENT OF TRANSPORTATION.

THE ESTABLISHMENT OF THE EXISTING CENTERLINES OF SR 2 SHOWN ON THIS PLAN AS OF THIS DATE WERE PERFORMED BY ME OR UNDER MY DIRECT SUPERVISION.

BY Charles A. Hauber  
 SURVEYOR'S NAME  
 SURVEYOR NO. 8034 DATE 6/30/08

PLAT APPROVED FOR RECORDING  
 JAMES R. GILLS  
 LAKE COUNTY ENGINEER

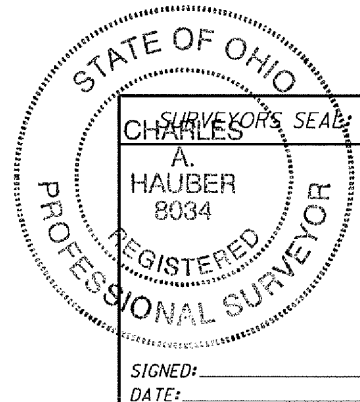
RECEIVED \_\_\_\_\_, 20\_\_\_\_  
 RECORDED \_\_\_\_\_, 20\_\_\_\_  
 BOOK \_\_\_\_\_ PAGE \_\_\_\_\_  
 COUNTY RECORDER

LOT LINES ARE GRAPHICALLY SHOWN FOR INFORMATIONAL PURPOSES. INTERSECTIONS OF STREETS AND LOT LINES ARE GRAPHICALLY SHOWN UNLESS A STATION AND BEARING IS GIVEN.

CENTERLINES OF CONSTRUCTION FOR SIDE ROADS AND BASELINES OF CONSTRUCTION FOR RAMPS ARE GRAPHICALLY SHOWN FOR INFORMATIONAL PURPOSES. REFER TO THE CONSTRUCTION DRAWINGS FOR DETAILED GEOMETRIC DATA OF ALL SIDE ROAD CENTERLINES OF CONSTRUCTION AND RAMP BASELINES.

SEE SHEET 2 FOR ORIGINAL GPS CONTROL MONUMENTS

FOR EX. R/W SR 2 AND SR 306 DATA SEE SHEET 6.  
 ALL RAMP DATA SHOWN ARE PROP. CONSTRUCTION. LIMITS OF R/W FOR SR 2 INCLUDING INTERCHANGE AREAS WERE SET BASED ON EX. R/W SR 2.



G:\Project\lak\13486\row\sheet\13486RC07.dgn 6/30/2008 3:32:28 PM jmadaria