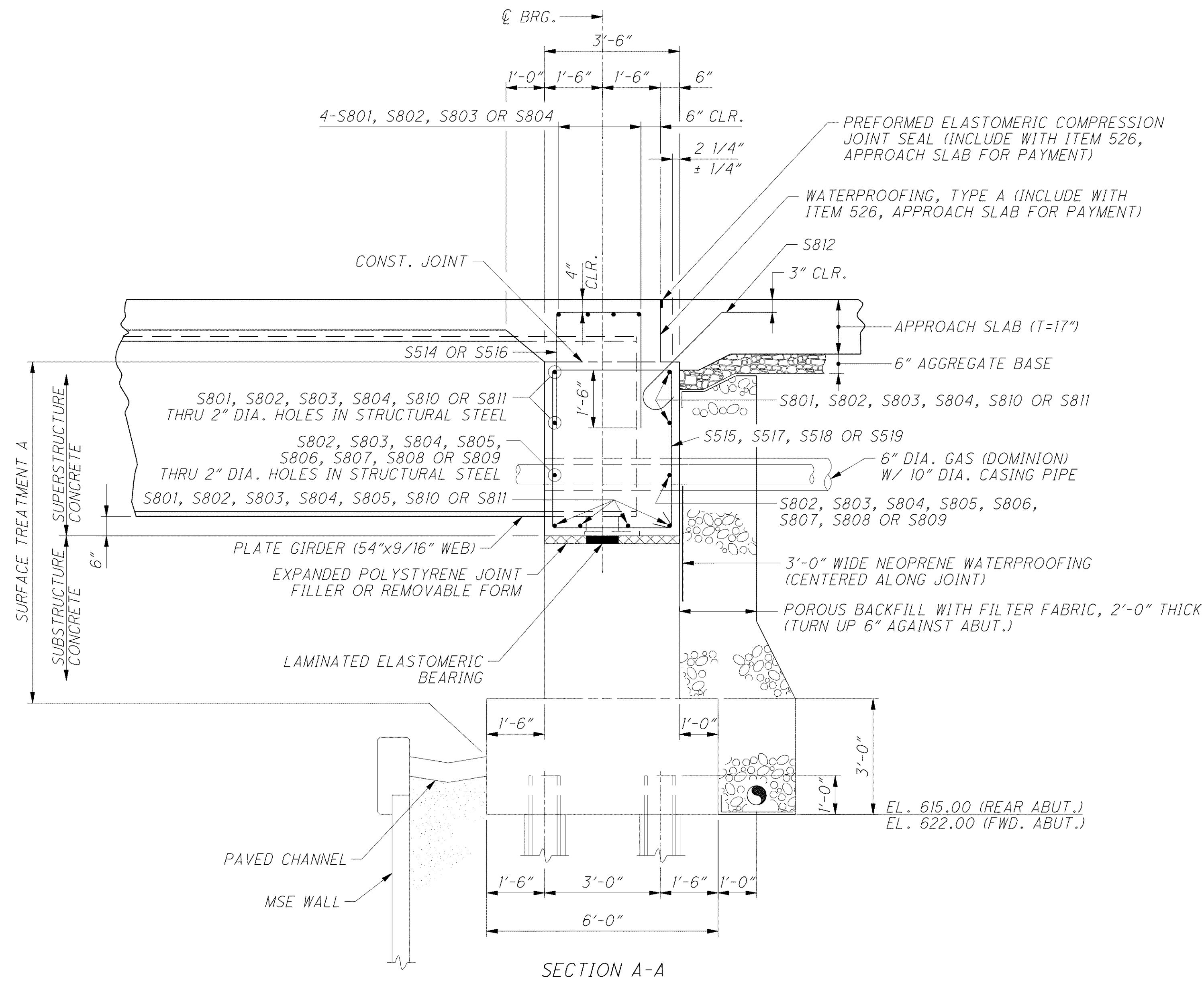
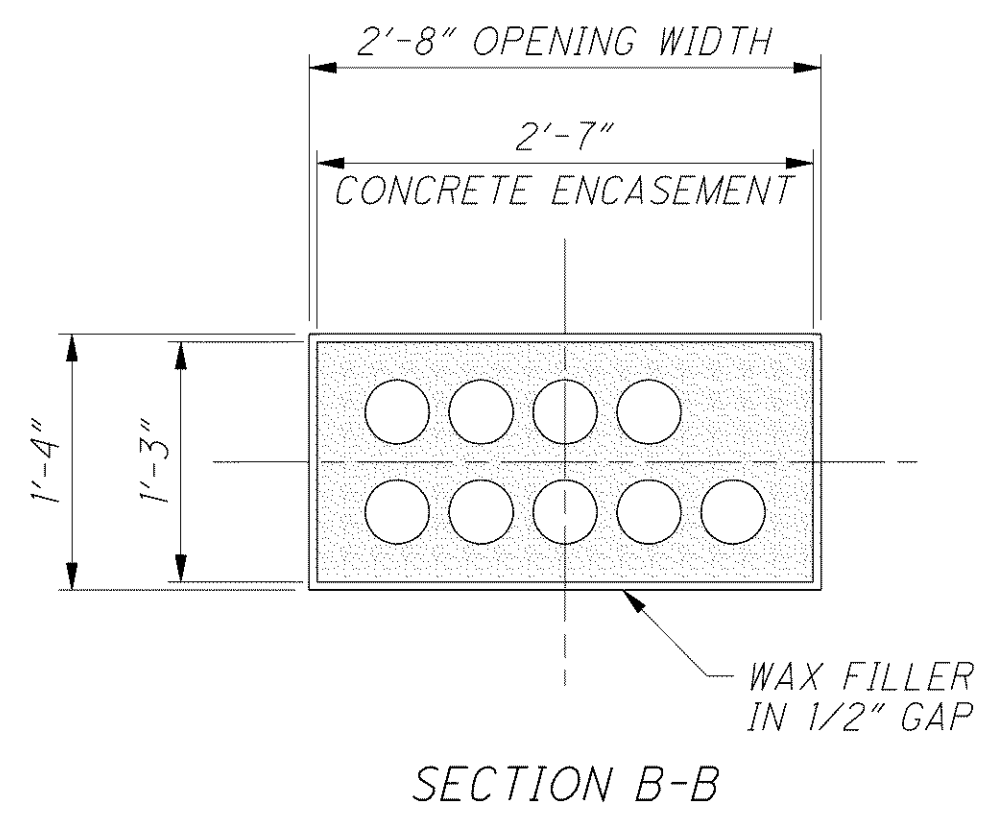


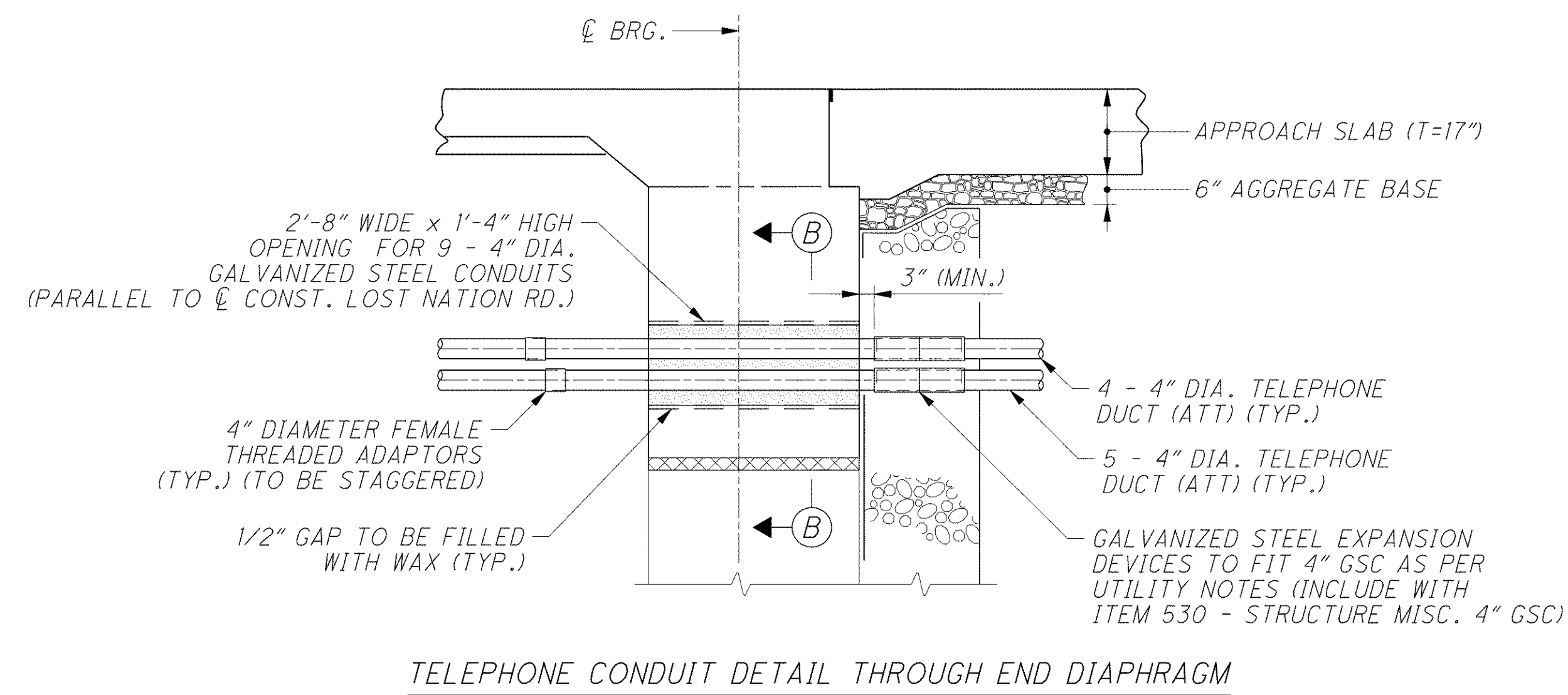
o:\project\c000048a001\drawing\lak\13486\bridge\02_0542c\sheets\02_0542c\0542cSD008.dgn 6/24/2008 5:03:04 PM troxberry



SECTION A-A



SECTION B-B



TELEPHONE CONDUIT DETAIL THROUGH END DIAPHRAGM

NOTES

1. MINIMUM BAR LAPS ARE AS FOLLOWS:
#8 BARS = 87"
2. FOR ABUTMENT DETAILS, AND NOTES SEE SHEETS [21/47] THRU [25/47].
3. FOR SLAB PLAN, TRANSVERSE SECTION AND ADDITIONAL DETAILS AND NOTES, SEE SHEETS [38/47] THRU [40/47].
4. FOR APPROACH SLAB DETAILS SEE SHEETS [41/47] THRU [43/47].
5. PREFORMED EXPANSION JOINT FILLER AND EXPANDED POLYSTYRENE FILLER SHALL BE INCLUDED WITH ITEM 511, CLASS HP CONCRETE, BRIDGE DECK, AS PER PLAN, FOR PAYMENT.
6. NEOPRENE WATERPROOFING, 3 FEET WIDE SHALL EXTEND FROM APPROACH SLAB DOWN TO THE BOTTOM OF HORIZONTAL NEOPRENE WATERPROOFING.
7. SLEEVES FOR 2" DIAMETER ELECTRICAL AND 6" DIAMETER GAS CONDUITS SHALL EXTEND FROM FACE OF ABUTMENT TO END OF APPROACH SLAB. SEE SHEETS [33/47] AND [35/47] FOR LOCATIONS.
8. CASING FOR GAS LINE SHALL BE ASTM A53 GRADE B OR ASTM A139 GRADE B AND SHALL BE GALVANIZED PER ASTM A123. CASINGS SHALL BE INCLUDED WITH GAS LINE FOR PAYMENT. SEE SHEET [33/47] AND [35/47] FOR LOCATION.
9. FOR ADDITIONAL SEMI-INTEGRAL ABUTMENT DETAILS AND NOTES SEE O.D.O.T. STD. DWG. SICD-1-96.
10. OPENING IN ABUTMENTS SHALL BE FILLED WITH NON-SHRINK, NON-METALLIC GROUT, BONDED TO PROPOSED END DIAPHRAGM CONCRETE.
11. FOR DESCRIPTION OF SURFACE TREATMENT A, SEE SHEET [40/47].
12. FOR LIST OF ABBREVIATIONS, SEE SHEET [3/47].
13. FOR ADDITIONAL NOTES AND PAYMENT, SEE SHEET [4/47].
14. ATT DUCT OPENING: OPENING 1" LARGER THAN ENCASUREMENT, FILL 1/2" GAP WITH WAX FILLER JOINT SEALANT, FILL COAT #7, AVAILABLE FROM THE TRENTON CORPORATION, 7700 JACKSON ROAD, ANN ARBOR, MI. 48103. PHONE NUMBER (734) 426-3955 OR APPROVED EQUAL. THE MATERIAL AND INSTALLATION SHALL CONFORM TO THE MANUFACTURER'S SPECIFICATIONS.

DESIGN AGENCY ARCADIS ARCADIS U.S., Inc. 100 Superior Avenue, Suite 1250 Cleveland, Ohio 44114 Tel: 216-781-6177 Fax: 216-781-6245 www.arcadis-us.com	
DATE 4/07	REVIEWED CMD
STRUCTURE FILE NUMBER 4300823	DRAWN MPB
DESIGNED RBB	CHECKED SKS
ABUTMENT DIAPHRAGM DETAILS BRIDGE NO. LAK-2-0542 LOST NATION ROAD OVER STATE ROUTE 2	
LAK-2-3.32 PID 13486	
37 / 47	
1583 1679	