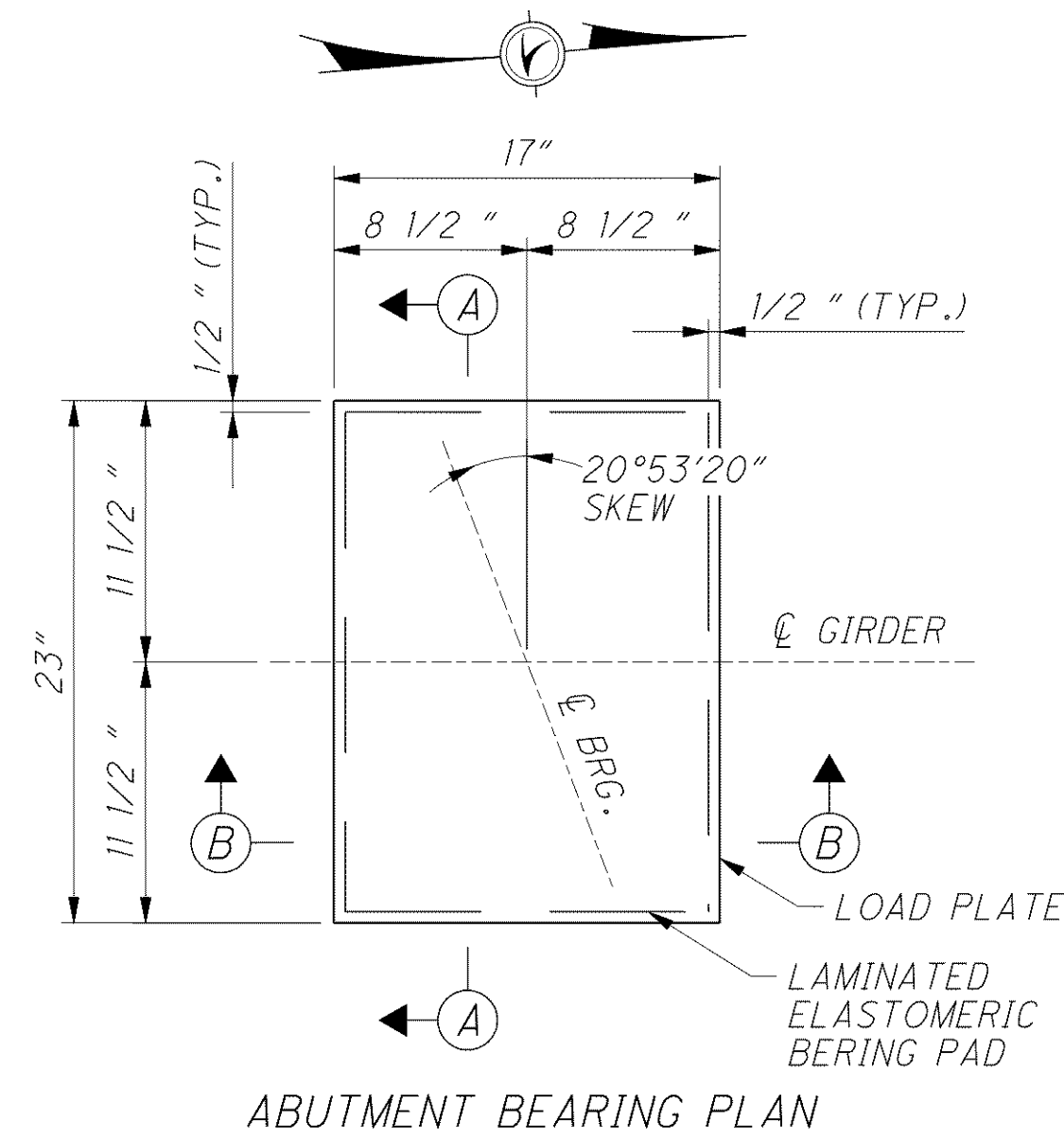
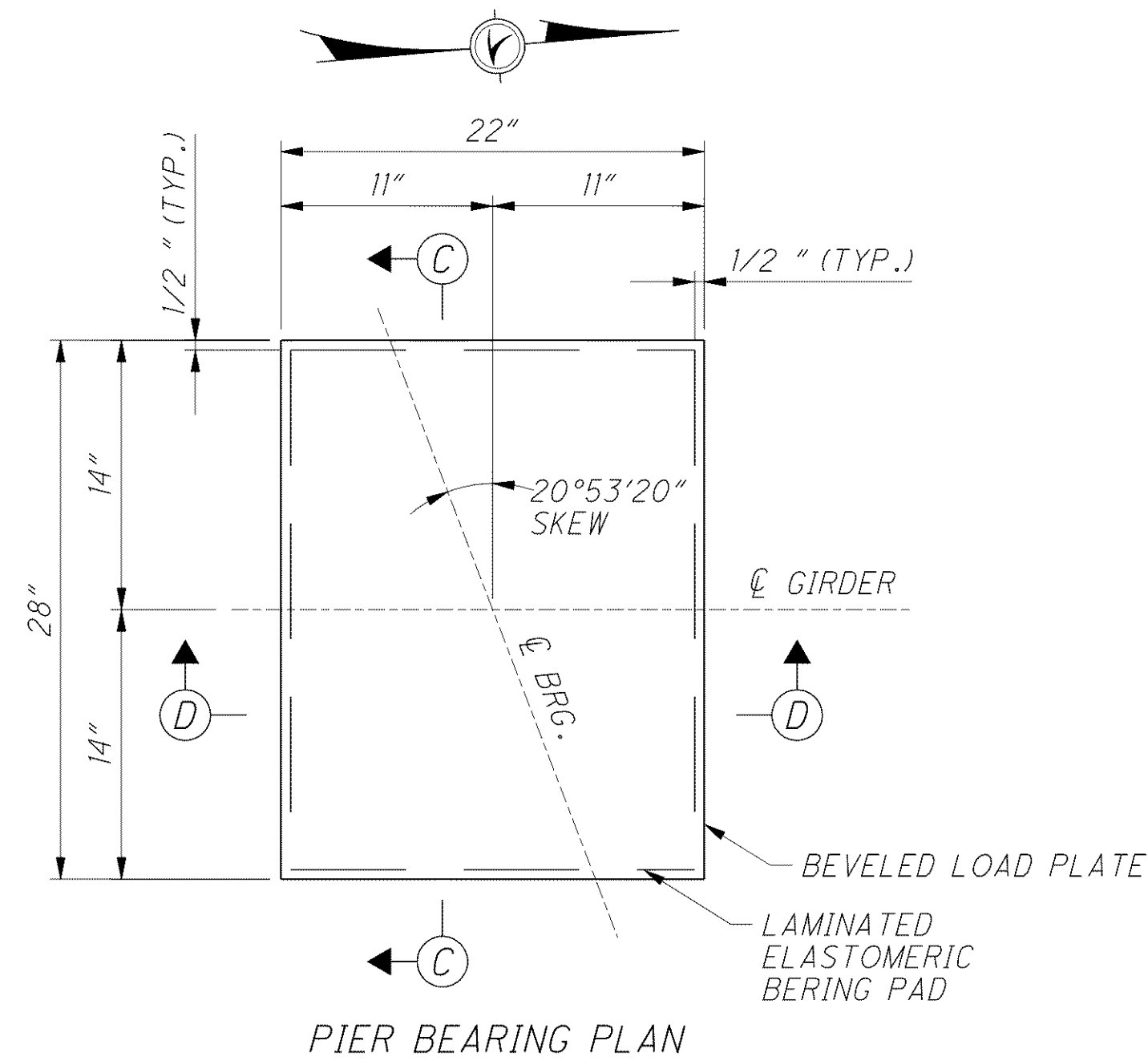


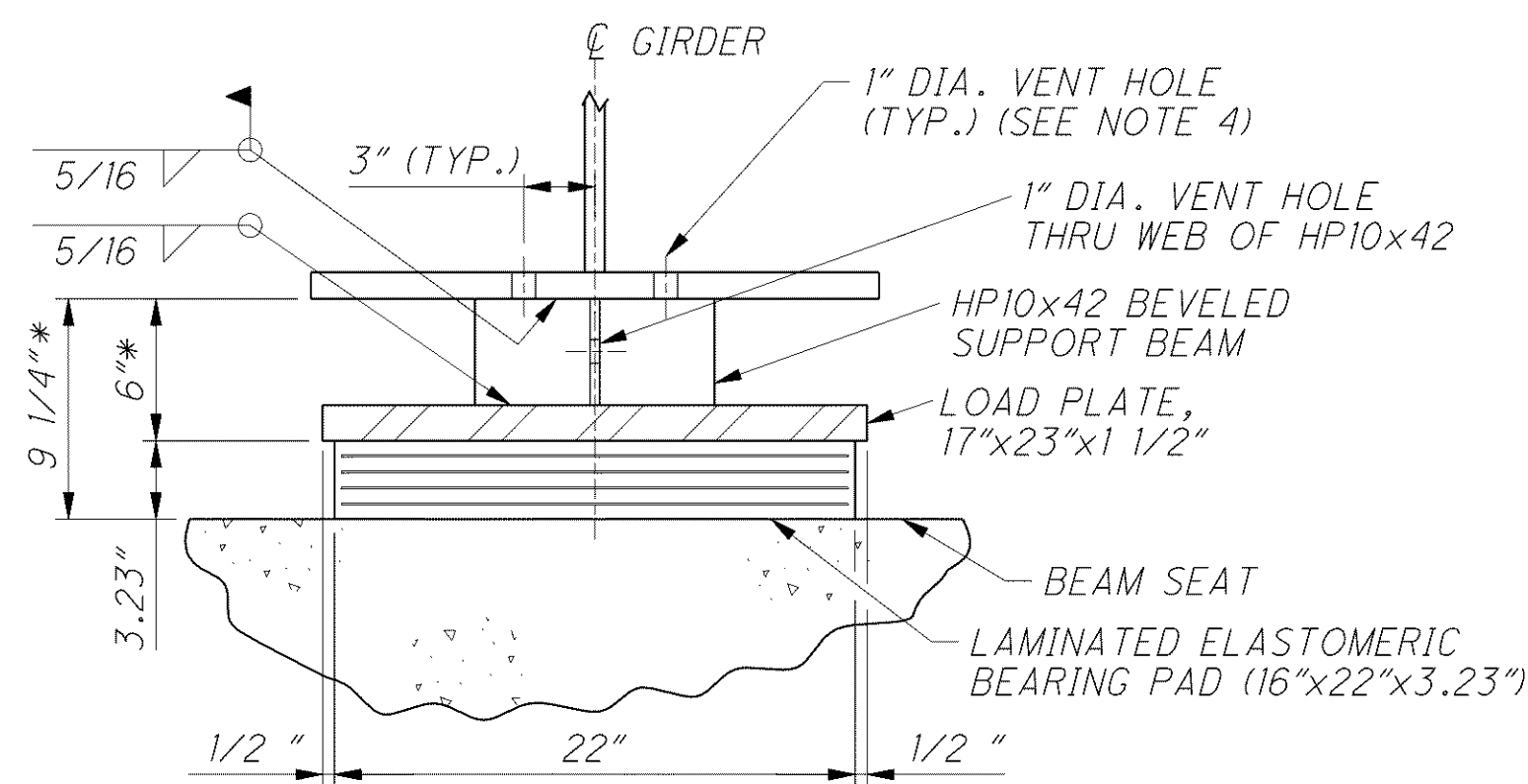
q:\project\cv000048a001\drawing\lak\13486\bridge\lak002\sheets\02_0542c\bridge\lak002_0542c\001.dgn 6/24/2008 4:55:58 PM troxberry



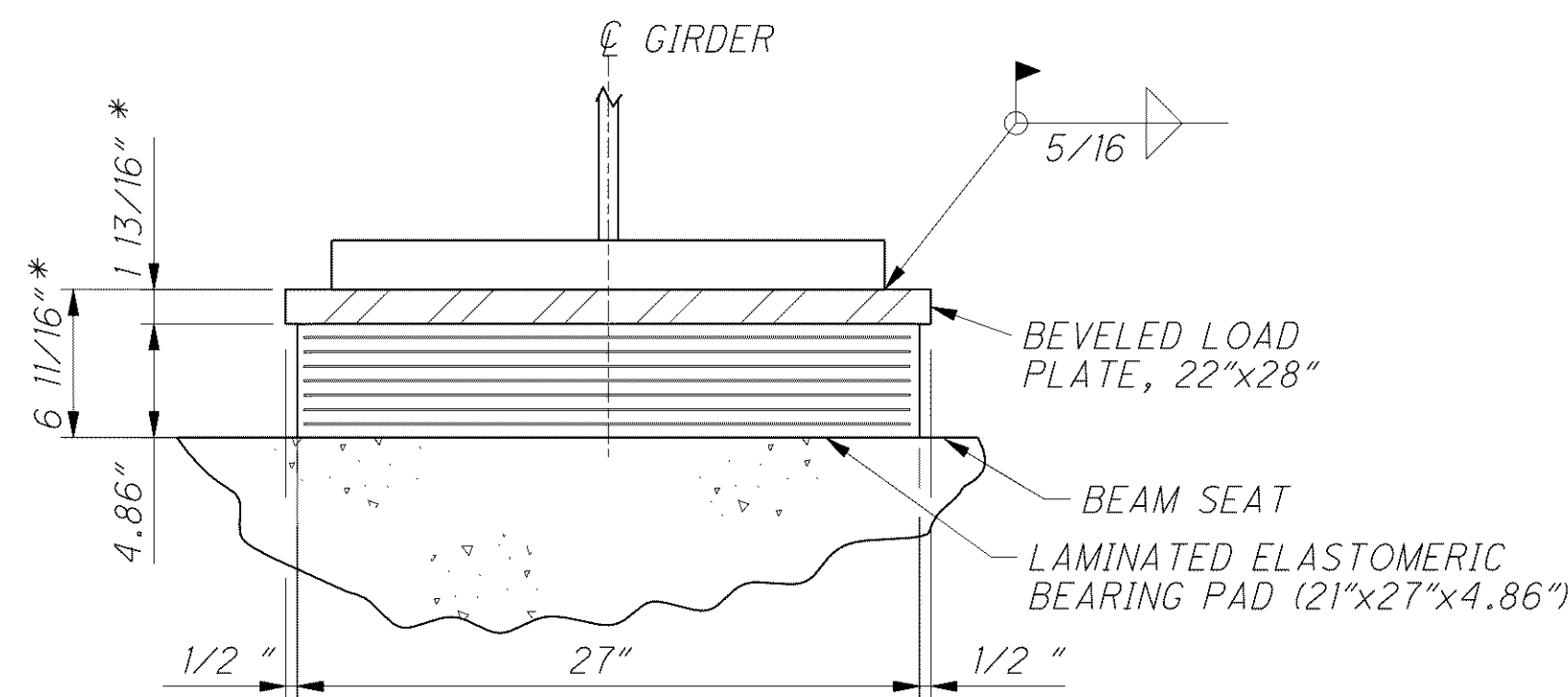
ABUTMENT BEARING PLAN



PIER BEARING PLAN

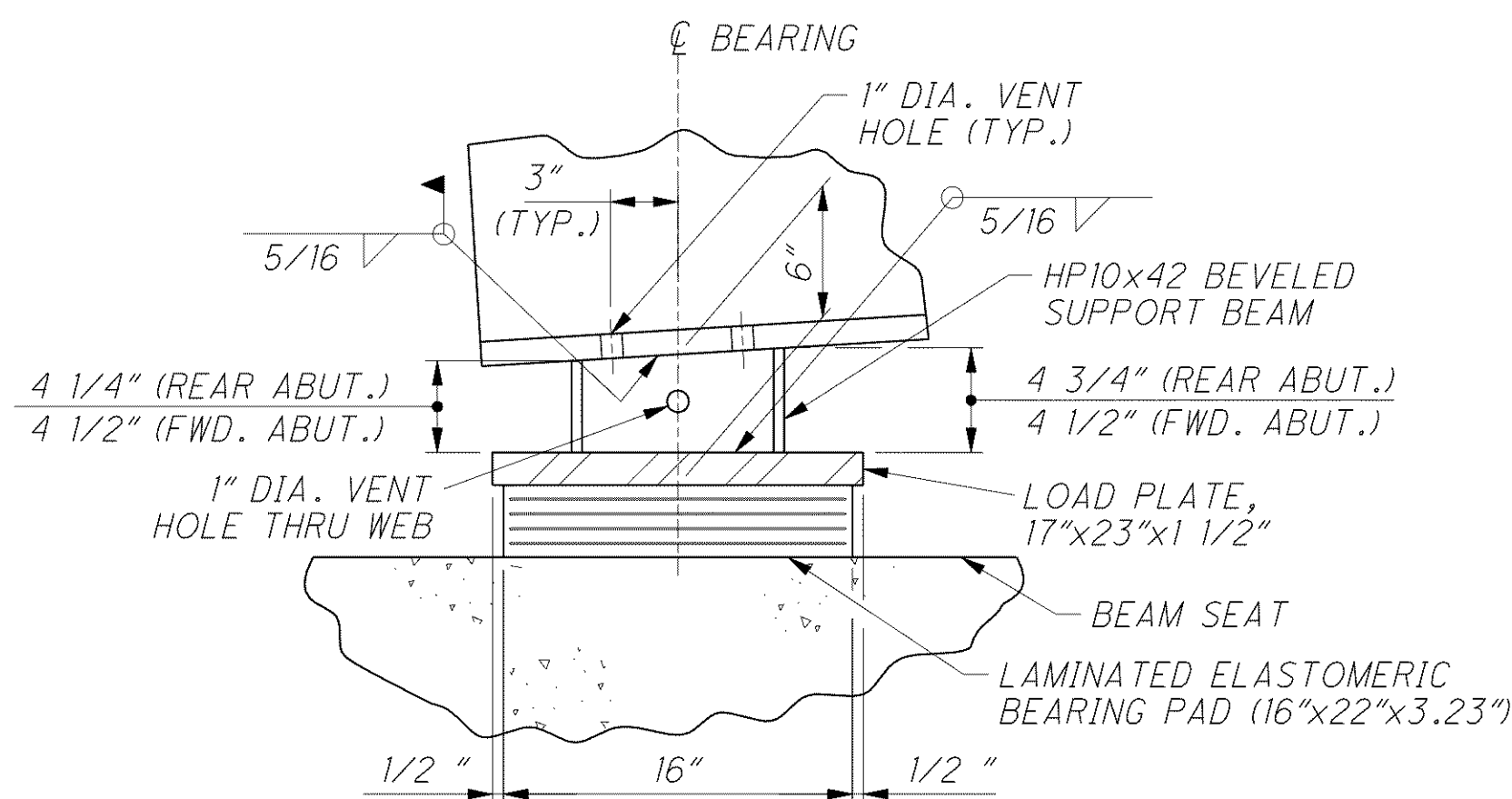


SECTION A-A

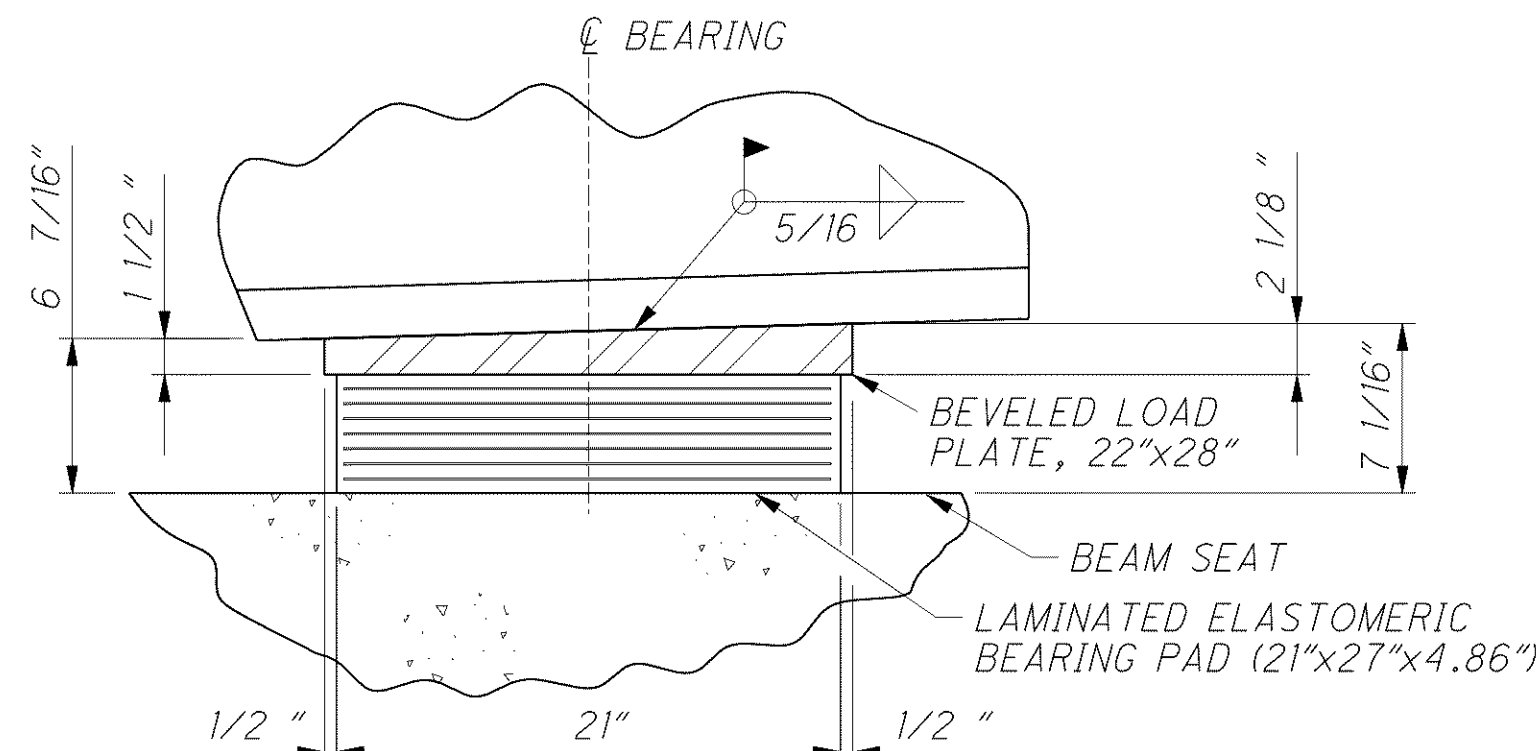


SECTION C-C

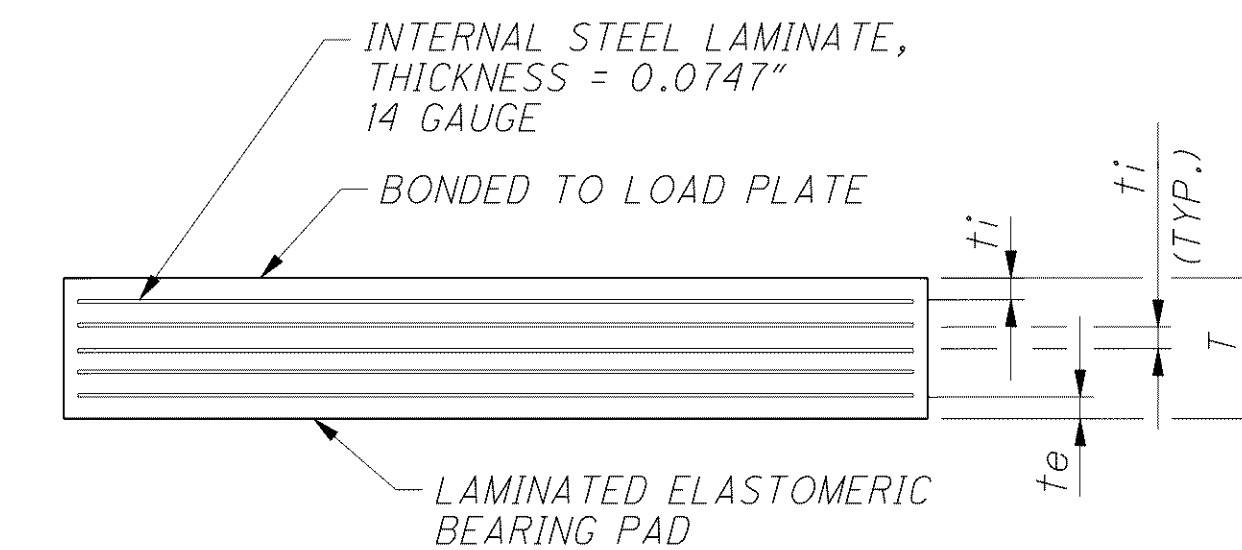
* @ CENTERLINE BEARING



SECTION B-B



SECTION D-D



BEARING PAD DETAIL

- NOTES**
- IF THE STEEL IS ERECTED AT AN AMBIENT TEMPERATURE HIGHER THAN 80 DEGREES F OR LOWER THAN 40 DEGREES F AND THE BEARING SHEAR DEFLECTION EXCEEDS 1/6 OF THE BEARING HEIGHT AT 60 DEGREES F (+/-) 10 DEGREES F, RAISE THE GIRDERS TO ALLOW THE BEARINGS TO RETURN TO THEIR UNDEFORMED SHAPE AT 60 DEGREES F (+/-) 10 DEGREES F.
 - CONTROL WELDING SO THAT THE PLATE TEMPERATURE AT THE ELASTOMER BONDED SURFACE DOES NOT EXCEED 300 DEGREES F AS DETERMINED BY USE OF PYROMETRIC STICKS OR OTHER TEMPERATURE MONITORING DEVICES.
 - ELASTOMERIC BEARINGS: THE ELASTOMER SHALL HAVE A HARDNESS OF 50 DUROMETER. THE BEARINGS WERE DESIGNED UNDER DIVISION I, SECTION 14.6.6.3 (METHOD A) OF THE AASHTO STANDARD SPECIFICATIONS FOR HIGHWAY BRIDGES.
 - ALL MATERIALS, LABOR AND INCIDENTALS NECESSARY TO FURNISH AND INSTALL LAMINATED ELASTOMERIC BEARINGS, LOAD PLATES AND SUPPORT BEAM SHALL BE INCLUDED IN ITEM 516, ELASTOMERIC BEARING WITH INTERNAL LAMINATES AND LOAD PLATE, AS PER PLAN FOR PAYMENT.
 - FOR GIRDER ELEVATION AND ADDITIONAL DETAILS AND NOTES SEE SHEETS [29|47] AND [30|47].
 - FOR LIST OF ABBREVIATIONS, SEE SHEET [3|47].
 - ALL STEEL PLATES IN CONTACT WITH THE ELASTOMER SHALL BE VULCANIZED TO THE BEARING DURING THE MOLDING PROCESS.

BEARING DATA							
LOCATION	50 DUROMETER						
	SIZE		(THICKNESS) "DIM. T"	t _i	t _e	NUMBER OF t _i	NUMBER OF STEEL LAMINATES
	L	W					
ABUTMENTS	16"	22"	3.23"	0.625"	0.437"	4	4
PIER	21"	27"	4.86"	0.563"	0.394"	7	7

BEARING LOAD DATA			
LOCATION	DEAD LOAD (KIPS/PAD)	LIVE LOAD (W/O IMPACT) (KIPS/PAD)	DESIGN LOAD (KIPS/PAD)
REAR ABUT.	137.9	102.9	240.8
FORWARD ABUT.	137.2	102.8	240.0
PIER	339.0	207.7	546.7

BEARING DETAILS
BRIDGE NO. LAK-2-0542
LOST NATION ROAD OVER STATE ROUTE 2

LAK-2-3.32
PID 13486

28/47
1574
1679

DESIGN AGENCY
ARCADIS
ARCADIS U.S.A., INC.
1900 Superior Avenue, Suite 1250 Cleveland, Ohio 44114
Tel: 216-781-6177 Fax: 216-781-6243 www.arcadis-us.com

DATE 4/07
REVIEWED CMD
DRAWN MPB
DESIGNED RBK
CHECKED SKS
STRUCTURE FILE NUMBER 4300823