

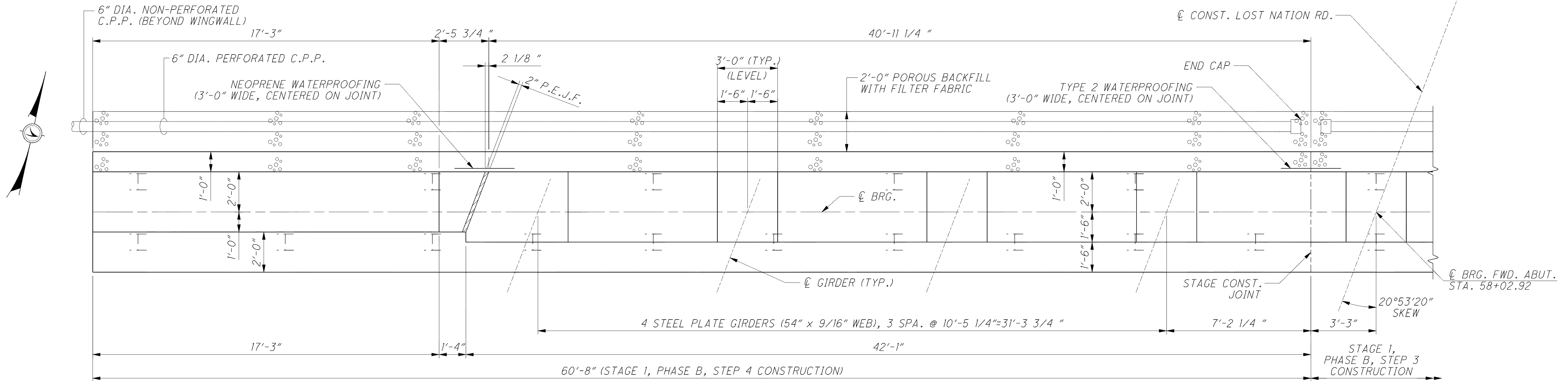
NOTES

LEGEND

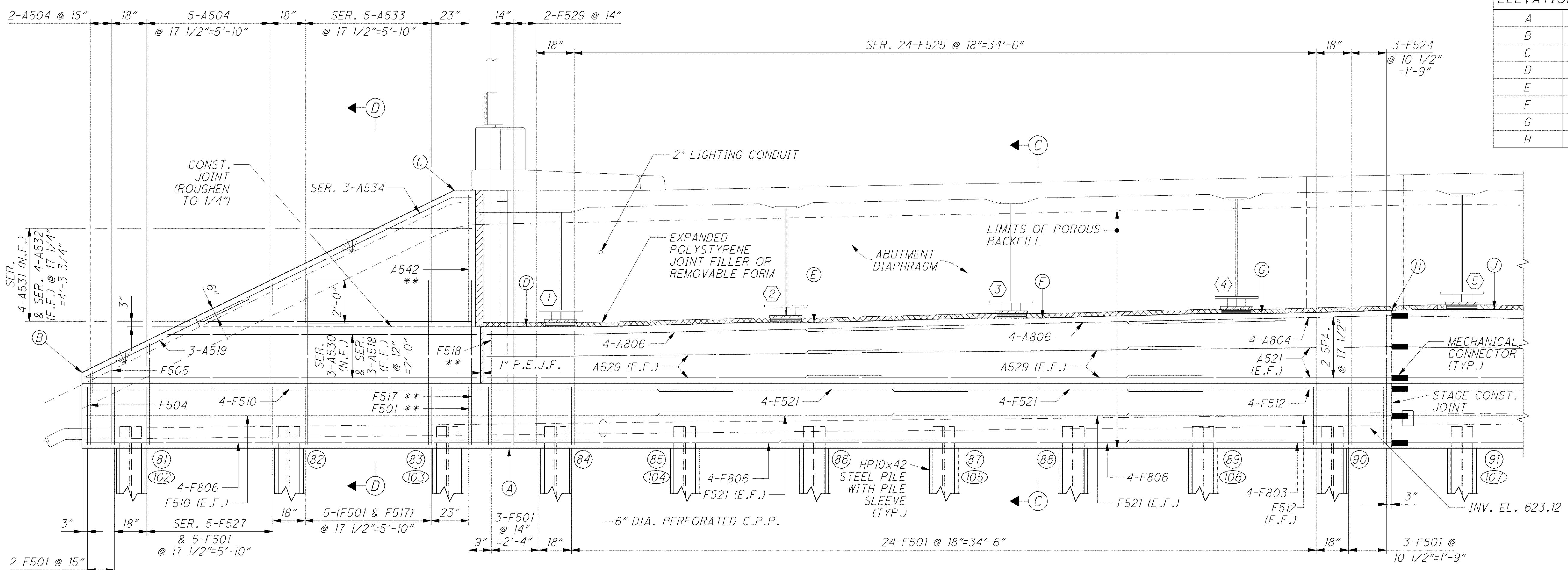
- 1. FOR STAGE 1, PHASE B, STEP 3 CONSTRUCTION OF THE FORWARD ABUTMENT SEE SHEET 23/47.
- 2. FOR REAR ABUTMENT DETAILS SEE SHEETS 21/47 AND 22/47.
- 3. MINIMUM BAR LAPS UNLESS NOTED: #5 BAR = 41" #8 BAR = 87"

- 4. FOR SECTION C-C, SECTION D-D AND ADDITIONAL NOTES SEE SHEET 25/47.
- 5. ELEVATIONS ARE TAKEN ALONG CENTERLINE OF BEARING.
- 6. FOR ABUTMENT DIAPHRAGM DETAILS, SEE SHEETS 35/47 AND 36/47.
- 7. FOR LIST OF ABBREVIATIONS, SEE SHEET 3/47.

** - BARS TO BE PLACED PARALLEL TO \varnothing CONSTRUCTION.



PLAN



ELEVATION TABLE	
A	622.00
B	625.50
C	633.94
D	627.54
E	627.75
F	627.95
G	628.16
H	628.31

ELEVATION

q:\project\c000048a001\drawing\lak\13486\bridge\lak002_0542c\sheets\002_0542CAF002.dgn 6/24/2008 4:55:05 PM troxberry