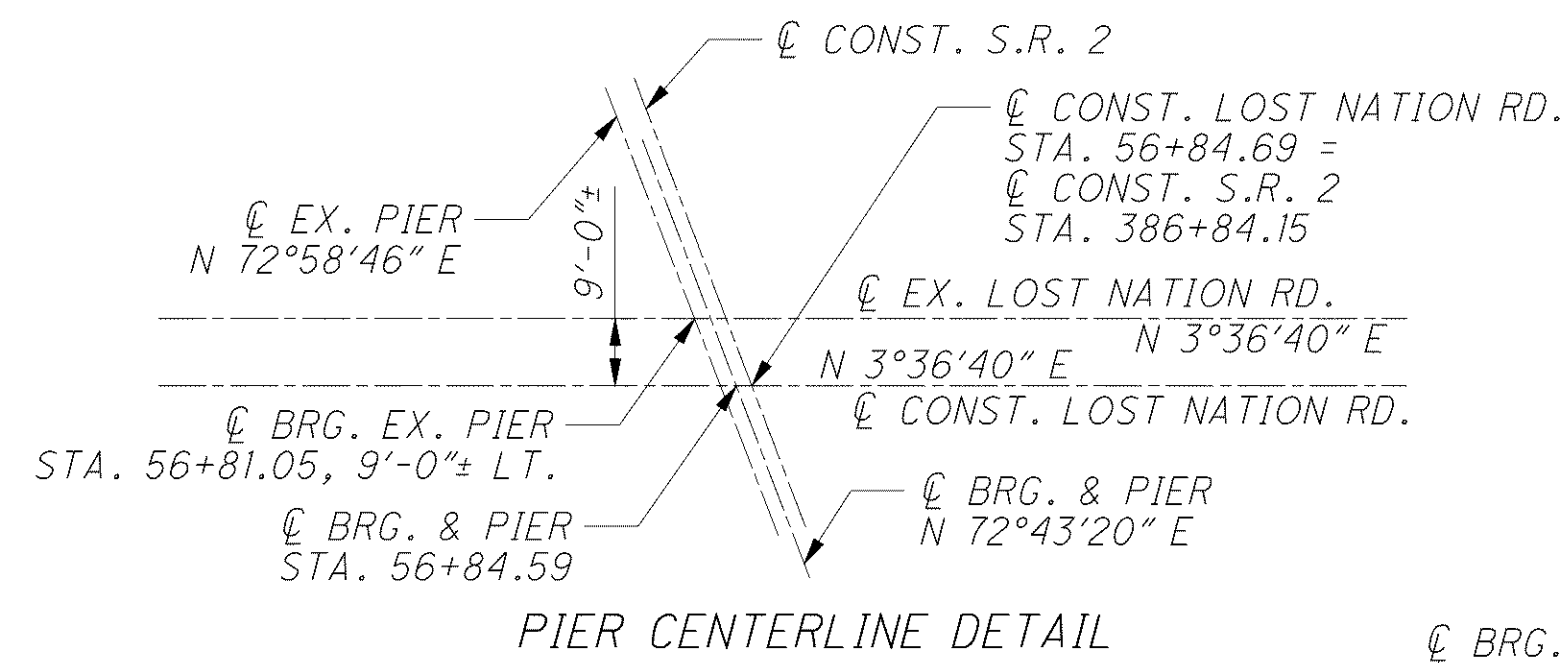


g:\project\cv000048a001\drawing\lak\13486\bridge\sheet\002\_0542c\002\_0542c.dgn 6/24/2008 4:57:02 PM troxberry



PIER CENTERLINE DETAIL

LEGEND

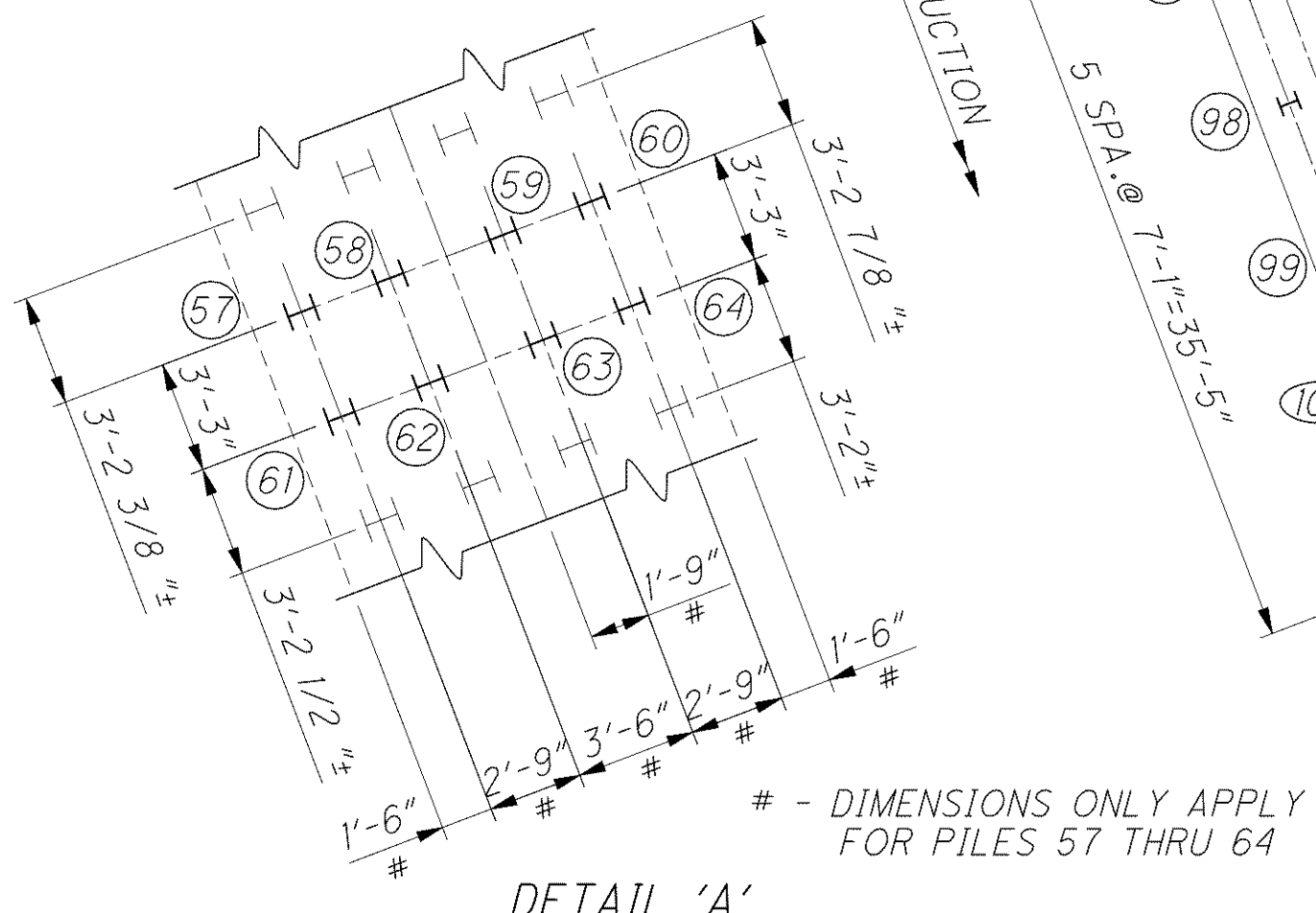
† - INDICATES 1:4 BATTER OF EXISTING PILE  
 (10) OR (100) - ASSIGNED NUMBER FOR PROPOSED PILES

NOTES

1. FOR ADDITIONAL ABUTMENT DETAILS AND NOTES SEE SHEETS 21/47 THRU 25/47.
2. FOR ADDITIONAL PIER DETAILS AND NOTES SEE SHEETS 26/47 AND 27/47.
3. FOR LIST OF ABBREVIATIONS, SEE SHEET 3/47.



PILE PLAN



DETAIL 'A'

DESIGN AGENCY <b>ARCADIS</b> ARCADIS U.S., INC. 100 Superior Avenue, Suite 1250 Cleveland, Ohio 44114 Tel: 216-781-6177 Fax: 216-781-6243 www.arcadis-us.com	DATE	4/07
	REVIEWED	CMD
DESIGNED	RBB	CHECKED
DRAWN	MPB	REVISED
STRUCTURE FILE NUMBER	4300823	
PILE PLAN BRIDGE NO. LAK-2-0542 LOST NATION ROAD OVER STATE ROUTE 2		
LAK-2-3.32 PID 13486		
20 / 47		
1566 1679		