

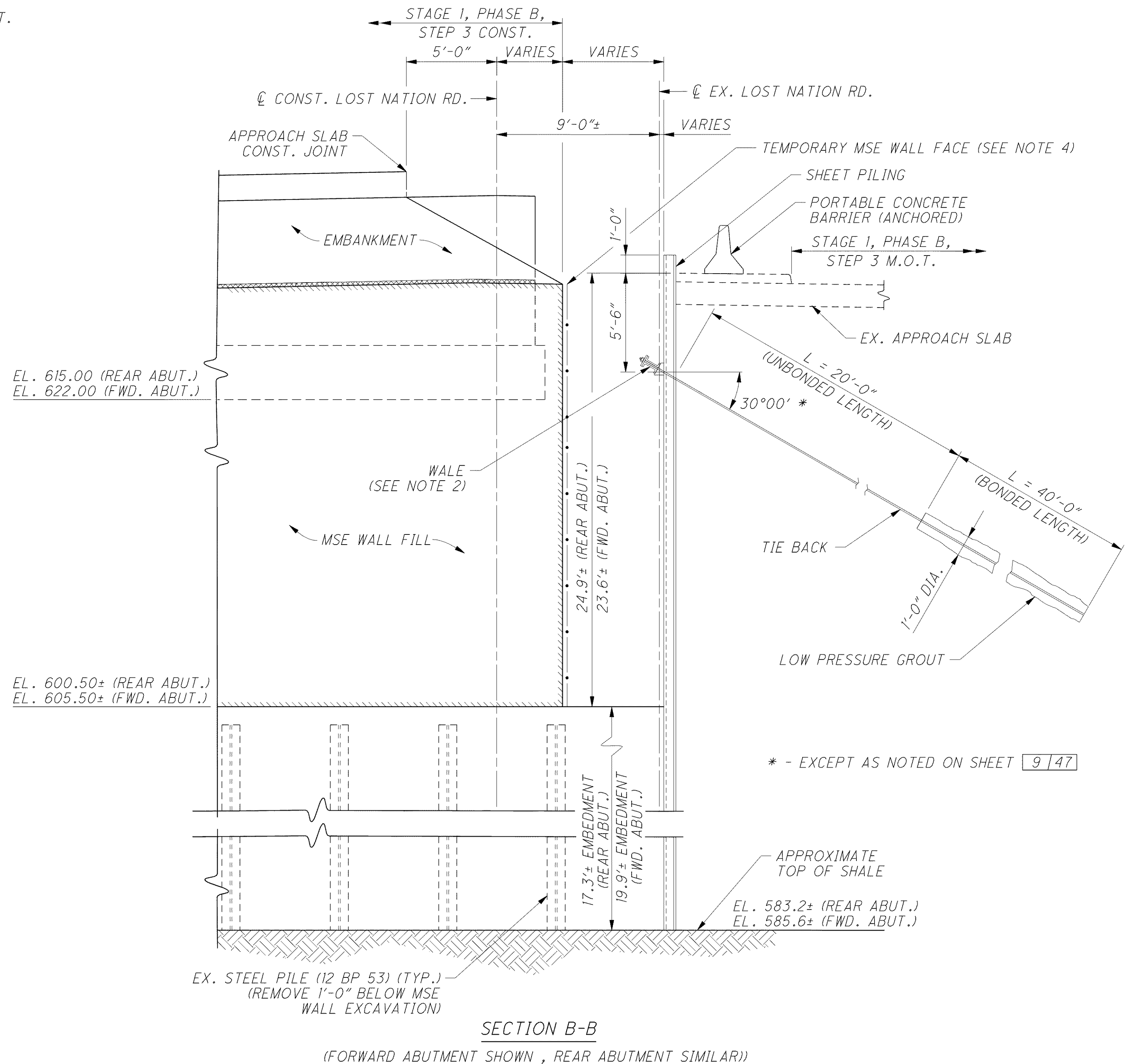
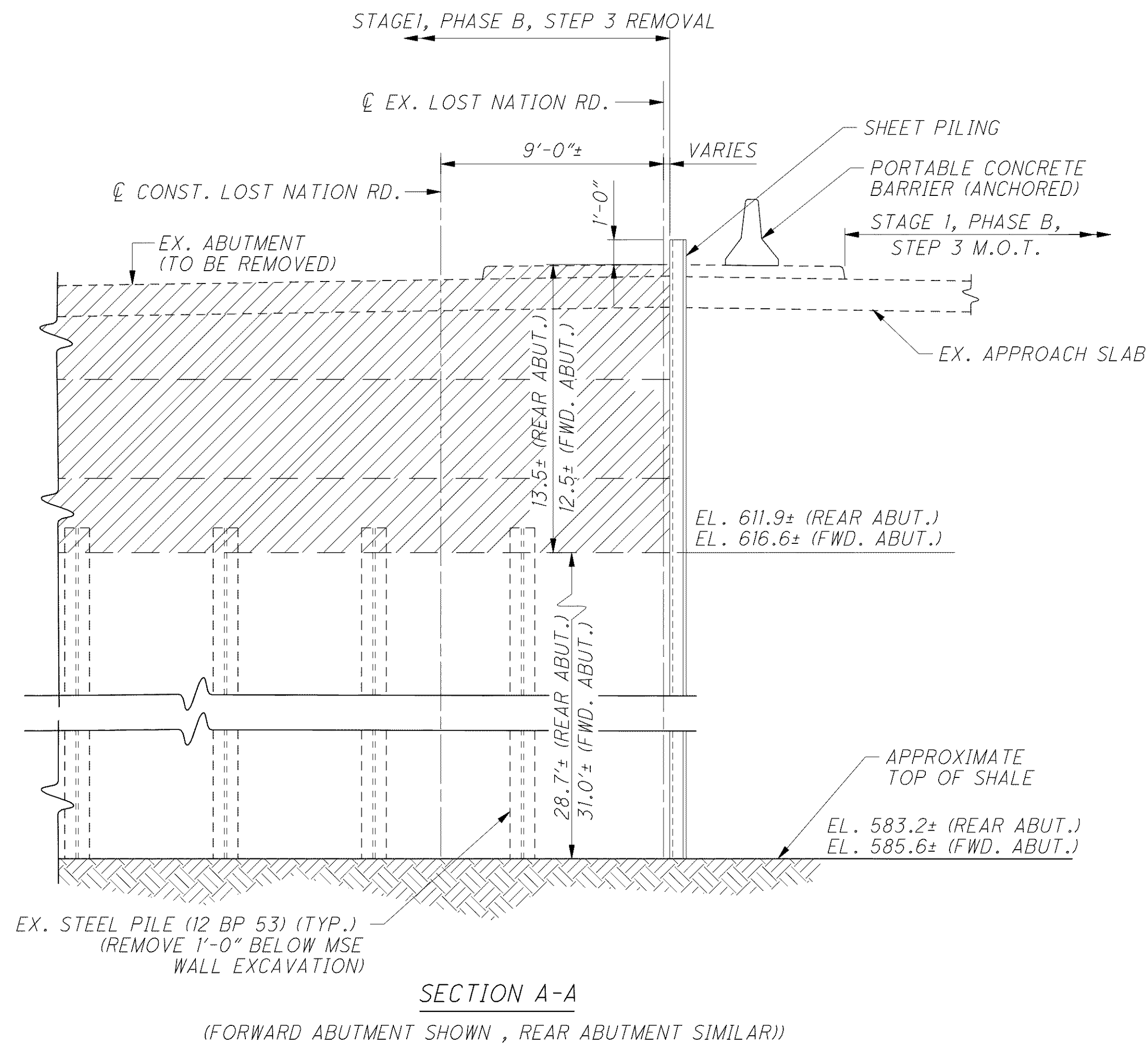
**TEMPORARY SHORING SEQUENCE OF CONSTRUCTION**

1. INSTALL STAGE 1, PHASE B, STEP 3 MOT.
2. INSTALL SHEET PILING TO BACK OF EXISTING ABUTMENT.
3. EXCAVATE SOIL TO BOTTOM OF EXISTING FOOTING AND REMOVE EXISTING ABUTMENT.
4. INSTALL TIE BACKS AND WALES.
5. EXCAVATE REMAINING EXISTING SOIL.
6. REMOVE EXISTING PILES TO BELOW MSE WALL EMBANKMENT.
7. INSTALL STAGE 1, PHASE B, STEP 3 PILE SLEEVES.
8. CONSTRUCT STAGE 1, PHASE B, STEP 3 MSE WALL AND EMBANKMENT WITH WIRE FACED TEMPORARY WALL ALONG PHASE CONSTRUCTION JOINT.
9. INSTALL STAGE 1, PHASE B, STEP 3 PILES.
10. CONSTRUCT STAGE 1, PHASE B, STEP 3 ABUTMENT.
11. INSTALL STAGE 1, PHASE B, STEP 4 MOT.
12. REMOVE REMAINING EXISTING ABUTMENT.
13. REMOVE REMAINING EXISTING SOIL.
14. REMOVE EXISTING PILES TO BELOW MSE WALL EMBANKMENT.
15. REMOVE SHEET PILING TIE BACKS AND WHALERS.
16. INSTALL STAGE 1, PHASE B, STEP 4 PILE SLEEVES.
17. CONSTRUCT STAGE 1, PHASE B, STEP 4 MSE WALL AND EMBANKMENT.
18. INSTALL STAGE 1, PHASE B, STEP 4 PILES.
19. CONSTRUCT STAGE 1, PHASE B, STEP 4 ABUTMENT.

**NOTES**

1. FOR ADDITIONAL NOTES AND DETAILS, SEE SHEETS 9/47 AND 10/47.
2. FOR WALE AND TIE BACK DETAILS, SEE SHEET 12/47.
3. HEAVY EQUIPMENT AND MATERIAL STOCKPILES SHALL NOT BE LOCATED CLOSER TO THE WALL THAN THE WALL HEIGHT.
4. TEMPORARY MSE WALL FACE SHALL BE INCLUDED IN ITEM 840 FOR PAYMENT.
5. FOR LIST OF ABBREVIATIONS, SEE SHEET 3/47.

g:\project\cv000048a001\drawing\lak\13486\bridge\lak002\_0542c\sheets\02\_0542CSH003.dgn 6/24/2008 5:04:16 PM troxberry



<p style="font-size: 8px; margin: 0;">DESIGN AGENCY <b>ARCADIS</b> ARCADIS U.S., Inc. 100 Superior Avenue, Suite 1250 Cleveland, Ohio 44114 Tel: 216-781-6177 Fax: 216-781-6245 www.arcadis-us.com</p>	DATE 4/07	REVISION CMD STRUCTURE FILE NUMBER 4300823	DRAWN MPB REVISED	DESIGNED RBB CHECKED SKS	<b>TEMPORARY SHORING DETAILS</b> BRIDGE NO. LAK-2-0542 LOST NATION ROAD OVER STATE ROUTE 2	<b>LAK-2-3.32</b> <b>PID 13486</b>	11 / 47 1557 1679
--	--------------	---	-------------------------	-----------------------------------	--	---------------------------------------	-------------------------