

SOIL BORING LOCATIONS		
BORING	STATION	OFFSET
RP-601	83+65	35' RT.
B-603	80+25	64' RT.
B-606	83+09	96' RT.
B-607	81+67	78' RT.
B-608/ B-608A	81+16	4' RT.
B-609/ B-609	82+82	37' RT.

BENCHMARK DATA	
BM #12-STA.	373+18.62, ELEV. 593.42, OFFSET 248.17' RT.
BM #13-STA.	382+98.98, ELEV. 607.98, OFFSET 144.06' RT.

FOR ADDITIONAL BENCHMARK INFORMATION. SEE ROADWAY PLAN SHEET 285 AND 286 OF 1679.

**NOTES**  
EARTHWORK LIMITS SHOWN ARE APPROXIMATE. ACTUAL SLOPES SHALL CONFORM TO PLAN CROSS SECTIONS  
SEE SHEET 3 28 FOR CENTERLINE SCHEMATIC.

FOR LEGEND OF ABBREVIATIONS SEE SHEET 3 28.

FOR BRIDGE NO. LAK-2-0530 L&R PLANS SEE SHEETS 1463 THRU 1518.

FOR RETAINING WALL NO. 3 PLANS SEE SHEETS 957 THRU 965.

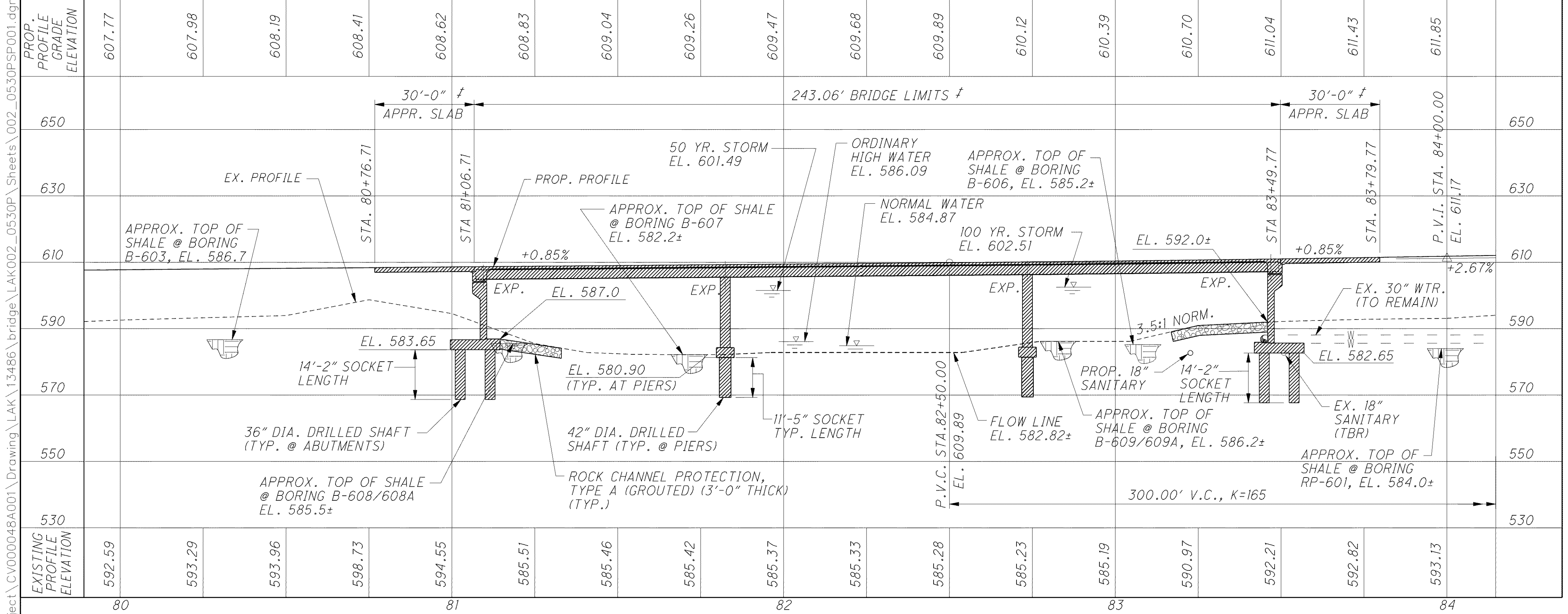
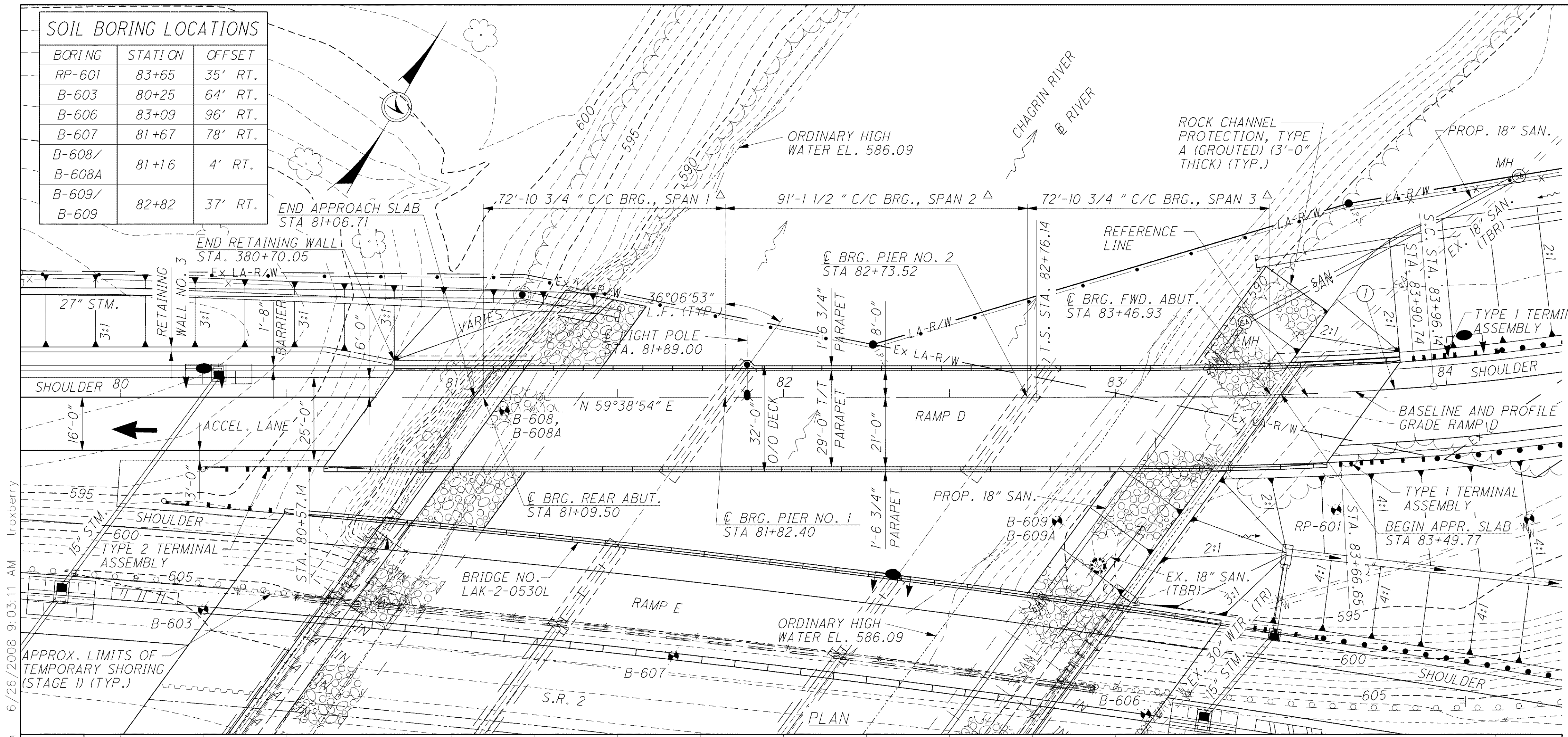
**DESIGN TRAFFIC:**  
2010 ADT = 9,350      2010 ADTT = 468  
2030 ADT = 9,350      2030 ADTT = 468  
DIRECTIONAL DISTRIBUTION = 100/0

**HYDRAULIC DATA**  
DRAINAGE AREA = 247 SQ. MILES  
Q (50) = 27,000 CFS      V (50) = 10.29 FT/S  
Q (100) = 31,700 CFS      V (100) = 12.08 FT/S

**LEGEND**  
 BORING LOCATION (RP601, B603 AND B606 TO B609)  
 - MEASURED ALONG BASE LINE OF RAMP D  
 - MEASURED ALONG REFERENCE LINE

**SPIRAL CURVE DATA**  
P.I. STA. = 83+56.16  
Ls = 120.00'  
Os = 4°48'00"  
LT = 80.03'  
ST = 40.03'  
x = 119.92'  
y = 3.35'  
k = 59.99'  
p = 0.84'

**PROPOSED STRUCTURE**  
TYPE: NEW CONTINUOUS (A709) STEEL BEAMS WITH COMPOSITE REINFORCED CONCRETE DECK AND SEMI-INTEGRAL WALL-TYPE ABUTMENTS AND WALL-TYPE PIERS ON DRILLED SHAFTS  
SPANS: 72'-10 3/4", 91'-1 1/2" AND 72'-10 3/4" C/C BRG. ALONG REFERENCE LINE  
ROADWAY: 29'-0" T/T PARAPET  
LOADING: HS25 AND ALTERNATE MILITARY LOADING, 60 P.S.F. (F.W.S.)  
WEARING SURFACE: 1" MONOLITHIC CONCRETE  
SKEW: 36°06'53" L.F.  
APPROACH SLABS: 30'-0" LONG, AS-1-81  
ALIGNMENT: TANGENT AND SPIRAL  
CROWN: CROSS SLOPE IN TRANSITION  
COORDINATES: LATITUDE N 41° 39' 55"  
LONGITUDE W 81° 24' 33"



PROFILE

C:\Project\CV000048A001\Drawing\LAK\13486\bridge\LAK002\_0530P\Sheets\002\_0530PSP001.dgn  
6/26/2008 9:03:11 AM troxberry

**ARCADIS**  
100 Superior Avenue, Suite 1250 Cleveland, Ohio 44114  
Tel: 216-181-6177 Fax: 216-181-6243 www.arcadis-us.com  
**DESIGN AGENCY**  
**DATE** 6/08  
**REVIEWED** RBB  
**STRUCTURE FILE NUMBER** 4300750  
**DRAWN** CAF  
**REVISION**  
**DESIGNED** MVD  
**CHECKED** F JG  
**LAKE COUNTY**  
BRIDGE NO. LAK-2-0530 EN  
RAMP D OVER CHAGRIN RIVER  
**SITE PLAN**  
**LAK-2-3.32**  
**PID 13486**  
1 / 28  
1519  
1679