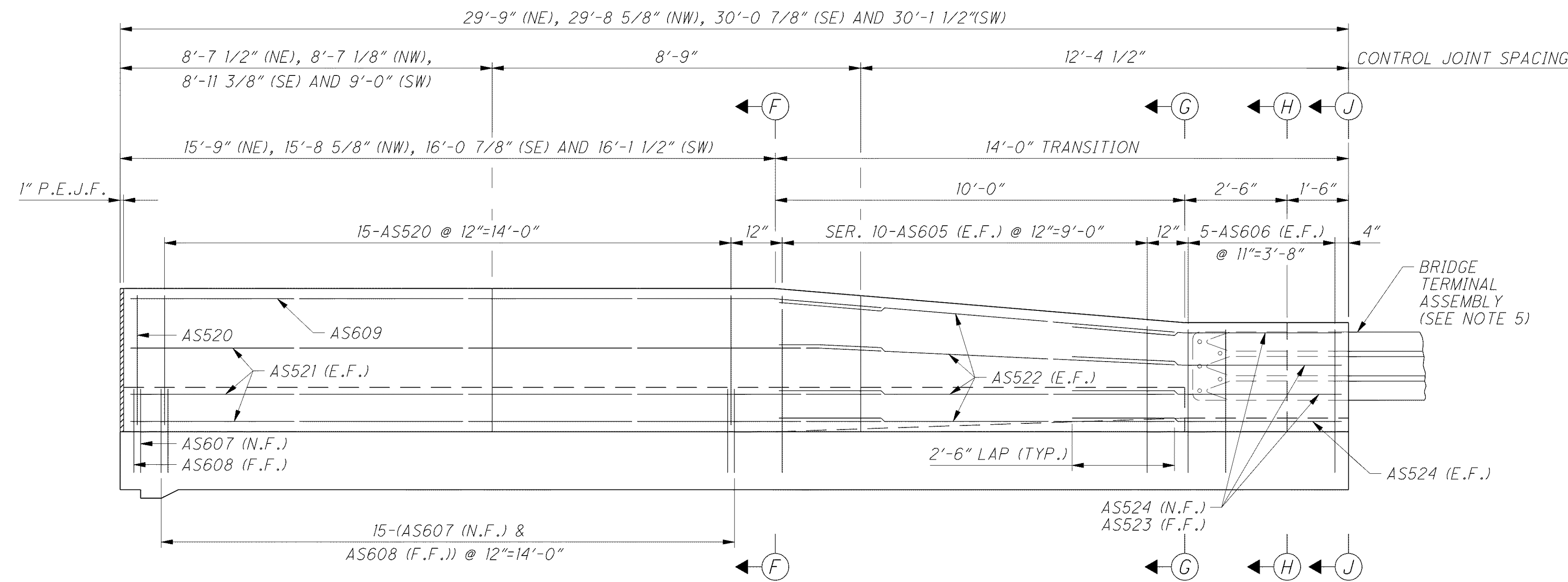


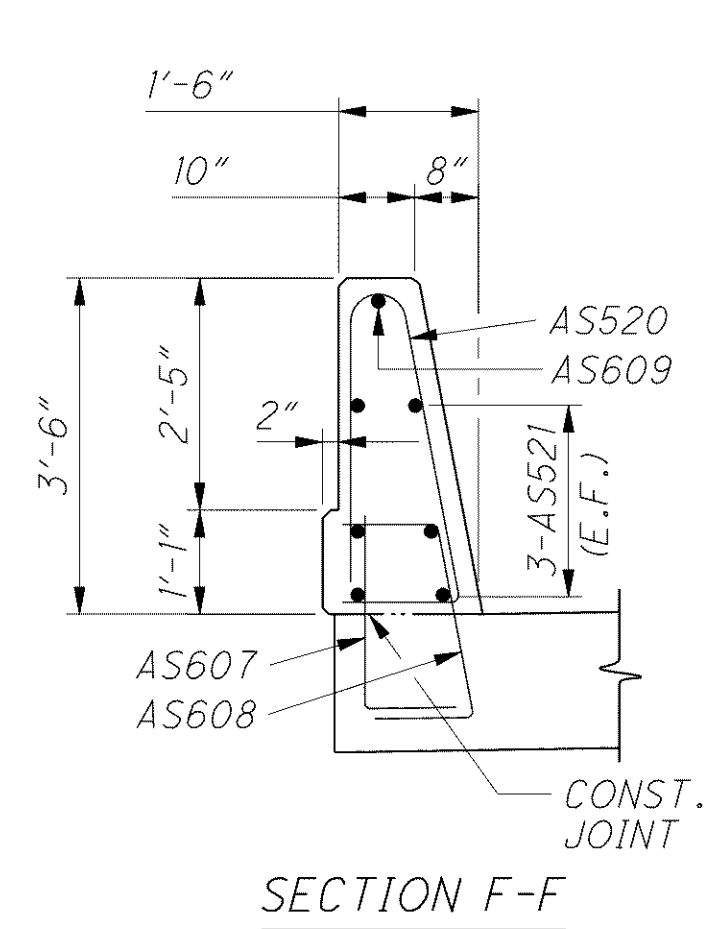
C:\Project\CV000048A001\Drawing\LAK\13486\bridge\LAK002_0530L\sheets\002_0530CMD004.dgn 6/24/2008 5:08:48 PM mbechter



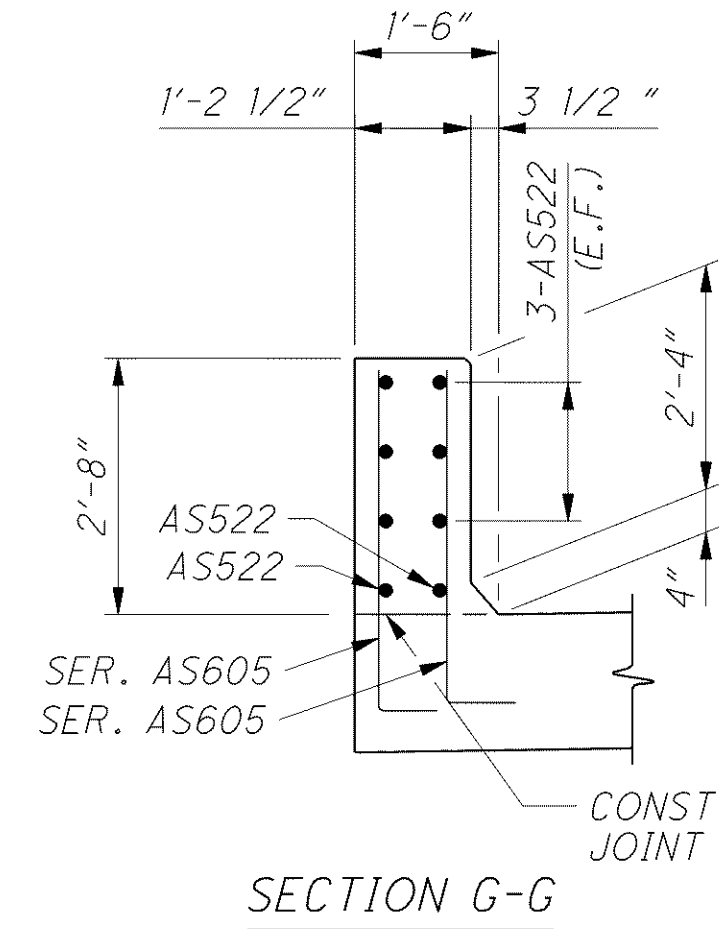
SECTION C-C (SINGLE SLOPE DEFLECTOR PARAPET TYPE)

NOTES

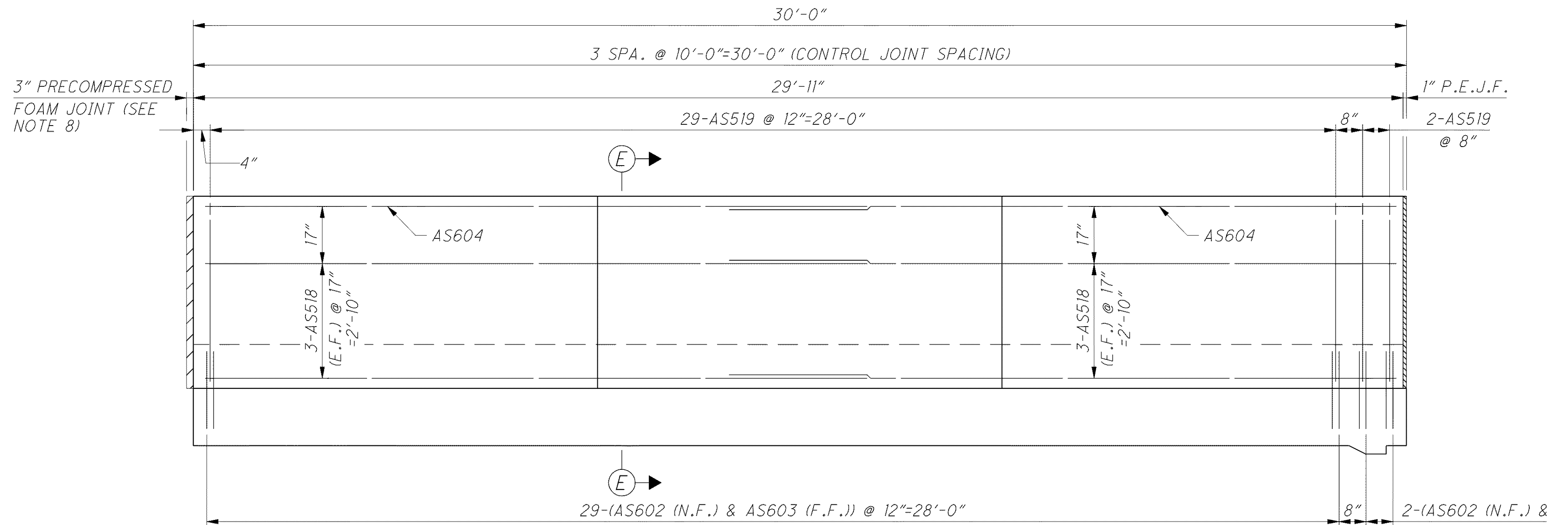
1. MINIMUM BAR LAPS ARE AS FOLLOWS:
#5 BARS = 30"
2. FOR ADDITIONAL SINGLE SLOPE DEFLECTOR PARAPET TYPE SEE O.D.O.T. STANDARD DRAWING SBR-1-91.
3. FOR ADDITIONAL APPROACH SLAB DETAILS SEE O.D.O.T. STANDARD DRAWING AS-1-81.
4. FOR ADDITIONAL APPROACH SLAB DETAILS SEE SHEETS 48/56, 49/56 AND 50/56.
5. FOR BRIDGE TERMINAL ASSEMBLIES SEE ROADWAY STANDARD DRAWINGS GR-3.1 AND GR-3.2.
6. FOR ARCHITECTURAL RECESS DETAILS SEE SHEET 41/56.
7. FOR LEGEND OF ABBREVIATIONS SEE SHEET 4/56.
8. THE 3" PRECOMPRESSED FOAM JOINT SHALL BE PLACED FROM THE BOTTOM OF THE APPROACH SLAB TO THE TOP OF BARRIER/PARAPET FOR THE FULL WIDTH OF THE BARRIER/PARAPET. THE COST SHALL BE INCLUDED WITH ITEM 526, REINFORCED CONCRETE, APPROACH SLABS, AS PER PLAN FOR PAYMENT. FOR 3" PRECOMPRESSED FOAM JOINT REQUIREMENTS, SEE SHEET 3/56.



SECTION F-F

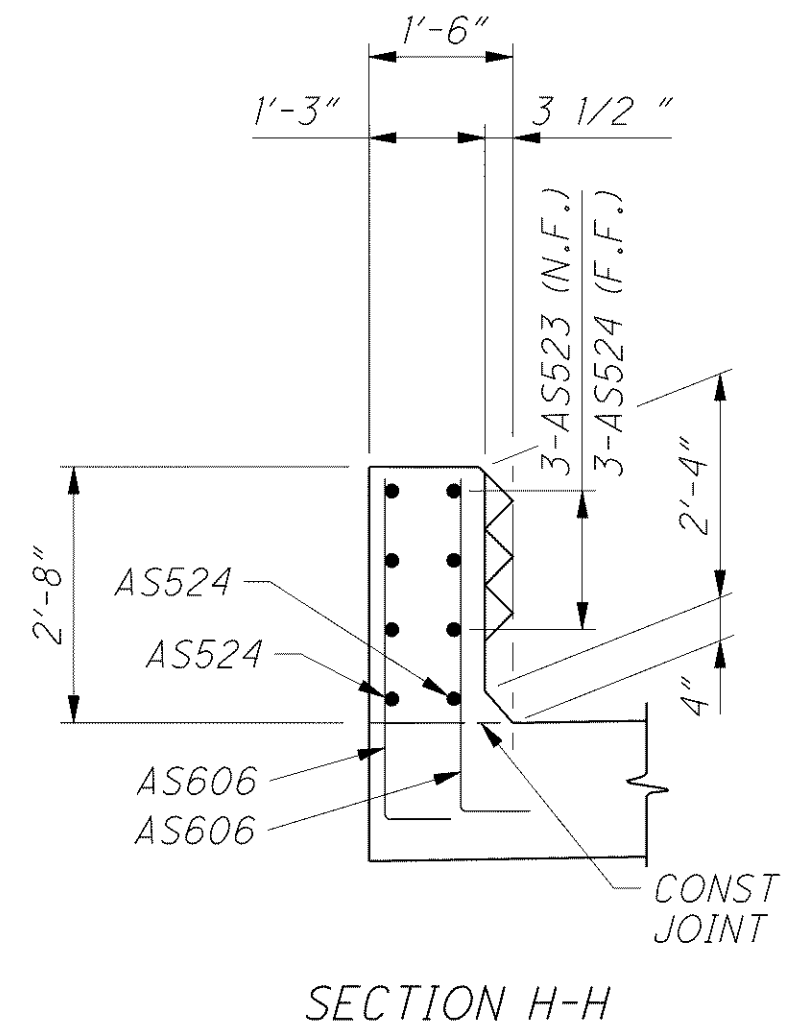


SECTION G-G

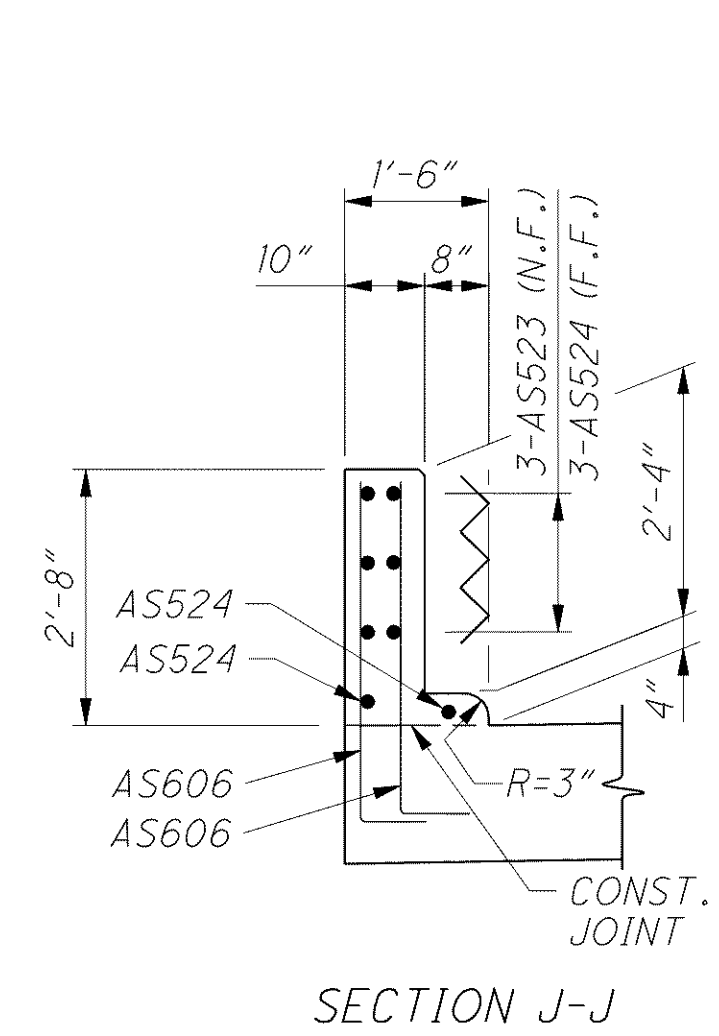


SECTION B-B (MEDIAN DEFLECTOR PARAPET TYPE)

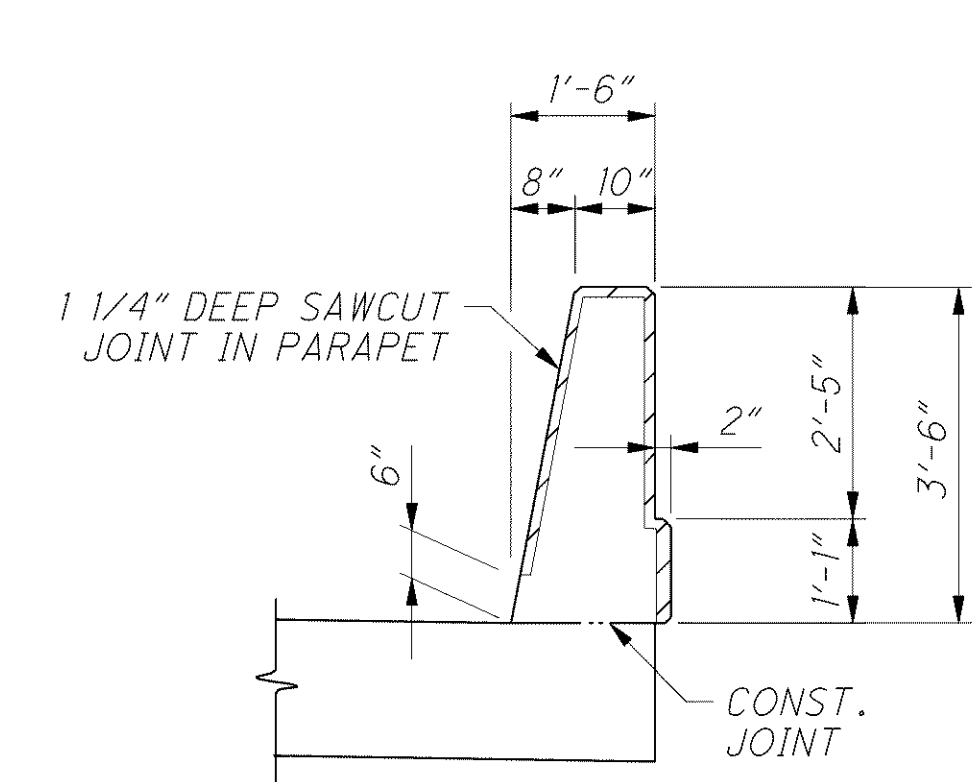
(REAR LEFT AND FORWARD RIGHT APPROACH SLAB PARAPETS SHOWN, REAR RIGHT AND FORWARD LEFT APPROACH SLAB PARAPETS SIMILAR)



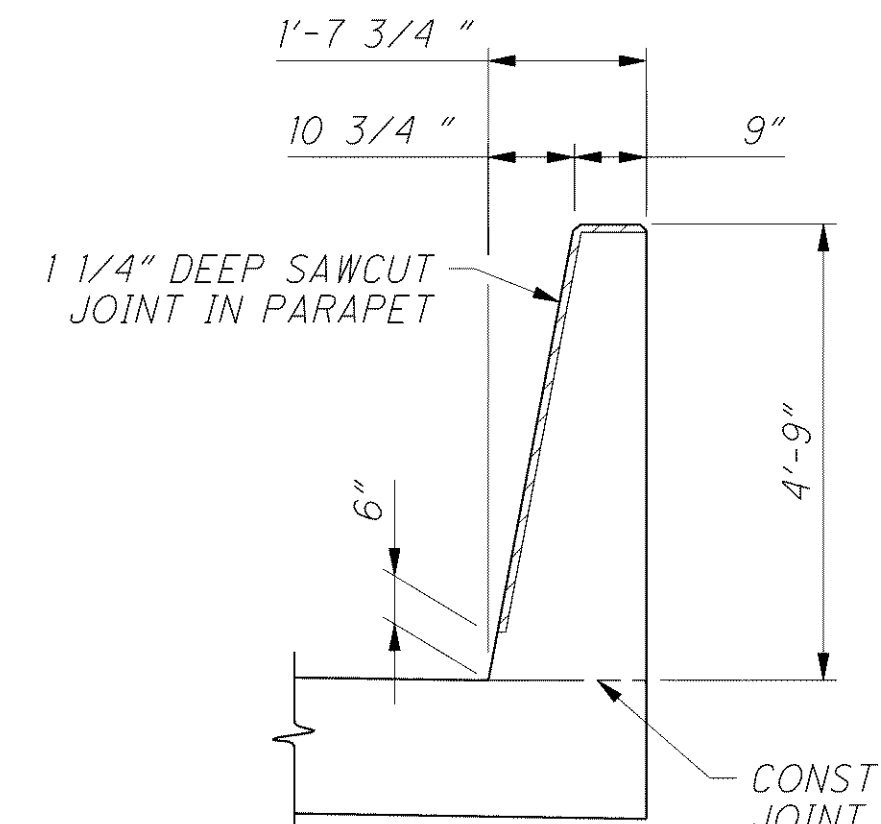
SECTION H-H



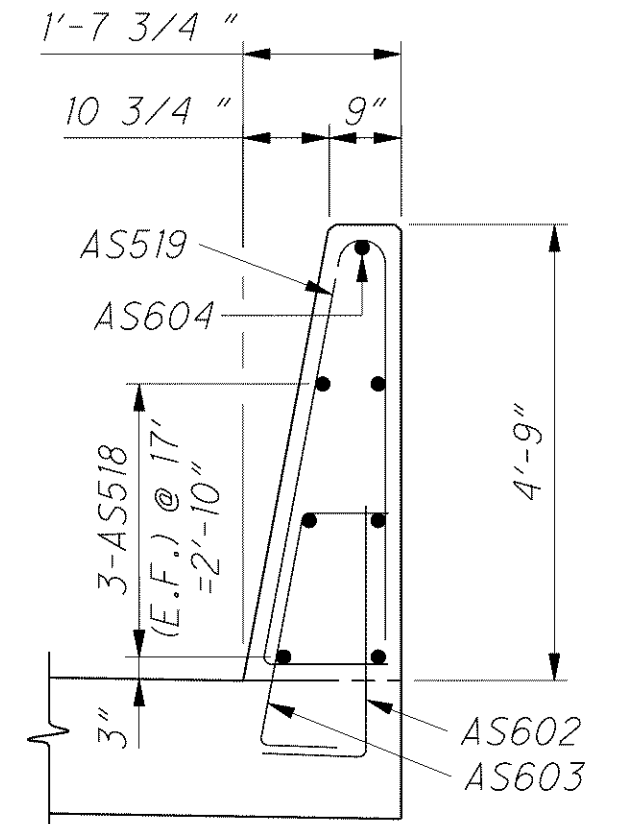
SECTION J-J



DEFLECTOR PARAPET DETAIL



MEDIAN DEFLECTOR PARAPET DETAIL



SECTION E-E

APPROACH SLAB DETAILS
BRIDGE NO. LAK-2-0530 L&R
STATE ROUTE 2 OVER CHAGRIN RIVER

LAK-2-3.32
PID 13486

51/56

1513
1679

DESIGN AGENCY
ARCADIS
ARCADIS U.S., Inc.
100 Superior Avenue, Suite 1250 Cleveland, Ohio 44114
Tel: 216-781-6177 Fax: 216-781-6243 www.arcadis-us.com

DESIGNED	DRAWN	REVIEWED	DATE
F JG	MPB	RBB	12/07
CHECKED	REVISED	STRUCTURE FILE NUMBER	
RHC		4300750 (L)	
		4300785 (R)	