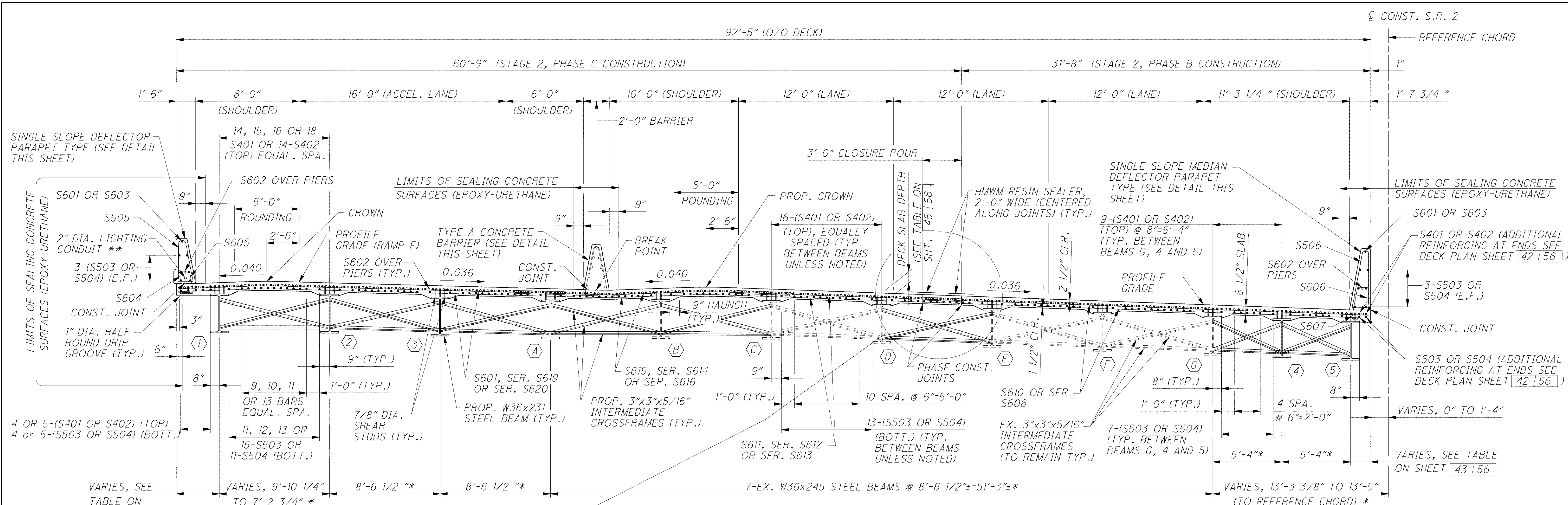


C:\Project\CV000048A001\Drawing\LAK\13486\bridge\LAK002\_0530L\_sheets\002\_0530CTS001.dgn 6/24/2008 5:16:32 PM mbechter



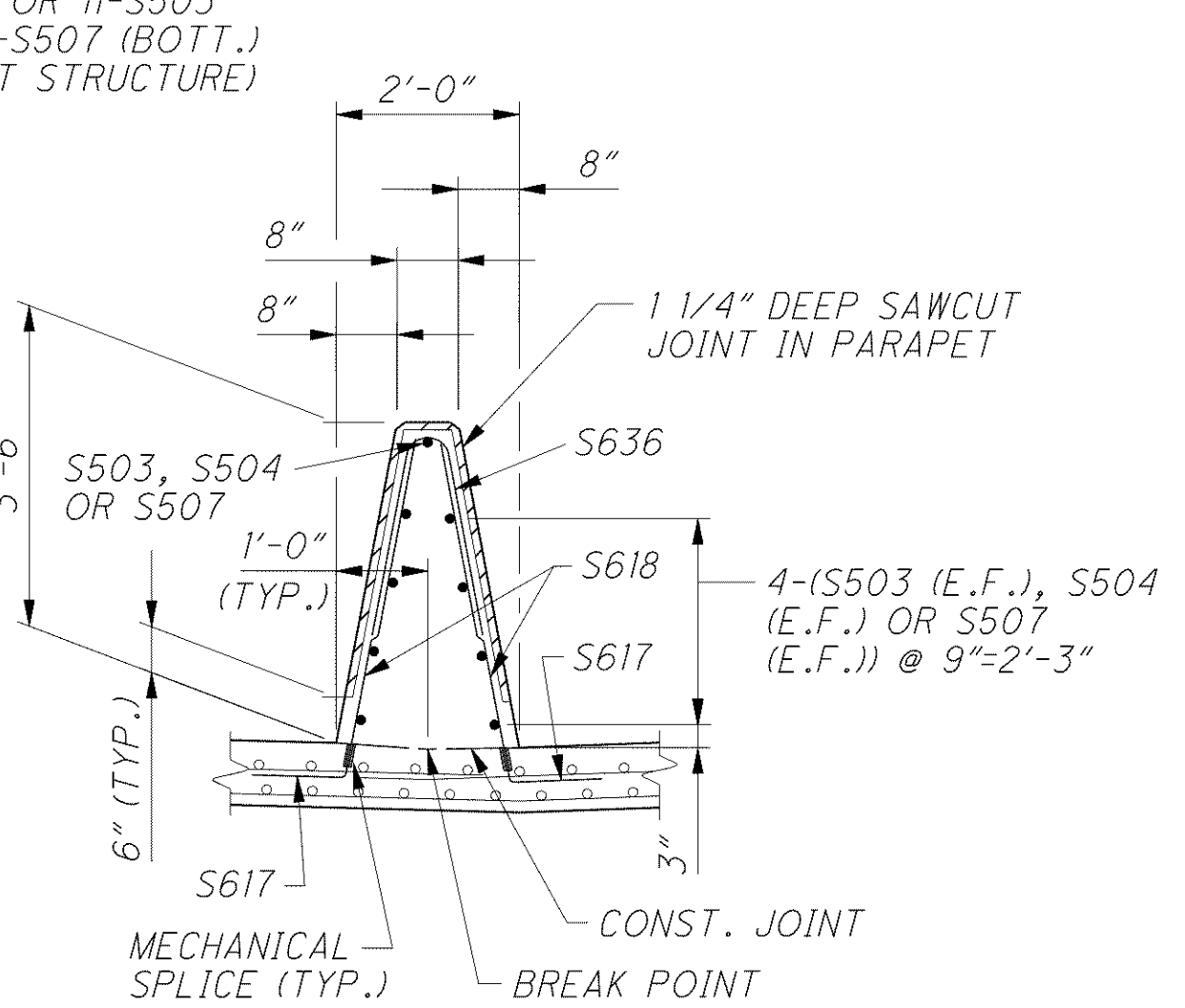
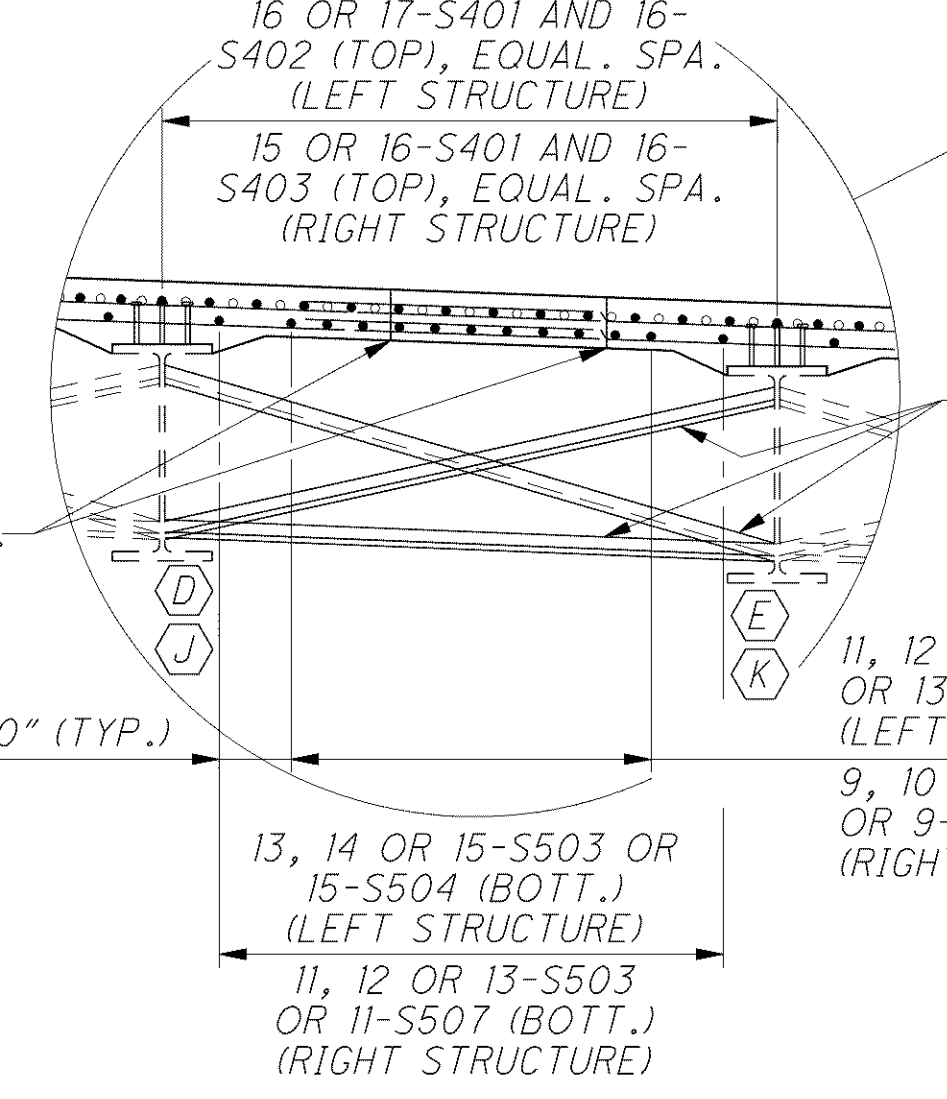
TRANSVERSE SECTION (LEFT STRUCTURE)

NOTES

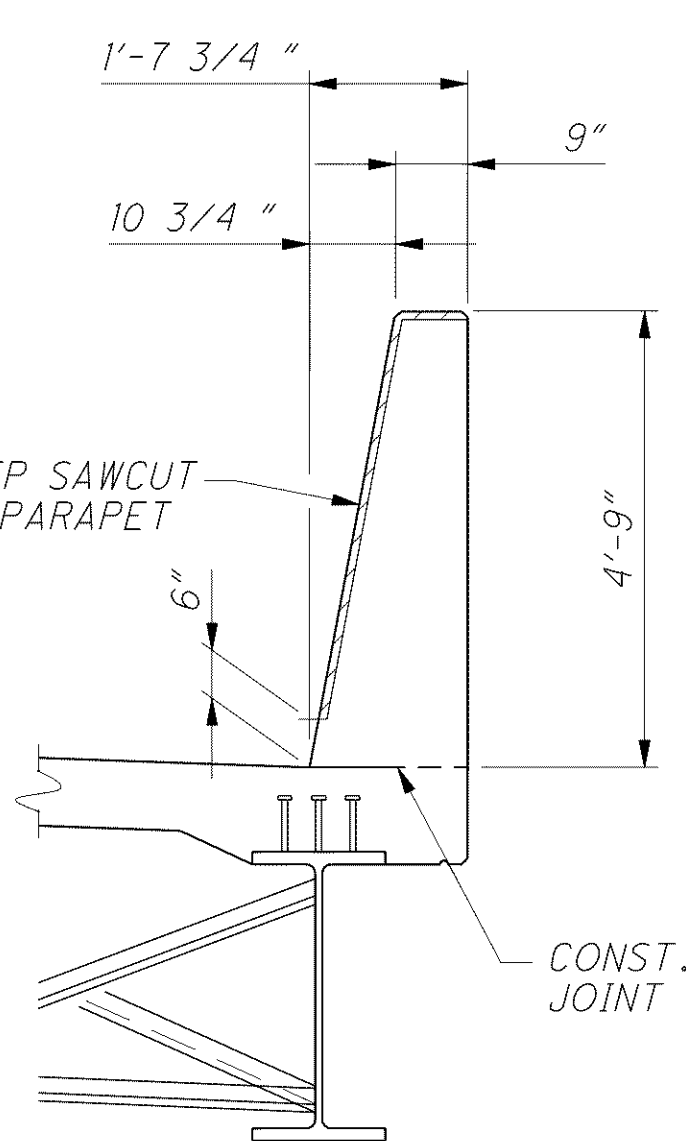
1. ALL DIMENSIONS ARE MEASURED RADIALLY UNLESS OTHERWISE NOTED.
2. FOR LEGEND OF ABBREVIATIONS SEE SHEET 4 | 56 .
3. FOR CENTERLINE SCHEMATIC DETAIL SEE SHEET 3 | 56 .
4. THE ESTIMATED QUANTITY OF DECK SLAB CONCRETE IS BASED ON THE CONSTANT DECK SLAB THICKNESS, AS SHOWN, PLUS THE QUANTITY OF CONCRETE THAT FORMS EACH BEAM HAUNCH. THE ESTIMATE ASSUMES AN AVERAGE HAUNCH THICKNESS OF 2 1/2 INCHES AND A CONSTANT HAUNCH WIDTH OUTSIDE THE EDGE OF EACH BEAM FLANGE OF 9 INCHES. DEVIATE FROM THIS HAUNCH THICKNESS AS NECESSARY TO PLACE THE DECK SURFACE AT THE FINISHED GRADE. THE ALLOWABLE TOLERANCE FOR THE HAUNCH WIDTH OUTSIDE THE EDGE OF EACH BEAM FLANGE IS ±3 INCHES.
5. FOR SLAB PLANS OF LEFT AND RIGHT STRUCTURES SEE SHEETS 42 | 56 THRU 45 | 56 .
6. FOR RIGHT STRUCTURE TRANSVERSE SECTION SEE SHEET 41 | 56 .
7. FOR FRAMING DETAILS SEE SHEETS 29 | 56 THRU 32 | 56 .
8. MINIMUM BAR LAPS ARE AS FOLLOWS:  
 #4 BARS = 31" #5 BARS = 38" #6 BARS = 46"
9. DRIP GROOVES SHALL TERMINATE 2'-6" FROM FACE OF ABUTMENTS.
10. THE MONOLITHIC WEARING SURFACE IS ASSUMED, FOR DESIGN PURPOSES, TO BE ONE (1) INCH THICK.
11. FOR LIGHTING CONDUIT DETAILS, SEE STANDARD CONSTRUCTION DRAWING HL-30.31.
12. THE CROSSFRAMES BETWEEN BEAMS D AND E SHALL NOT BE ERECTED UNTIL DECK POURS ON EACH SIDE OF CLOSURE POUR HAVE BEEN COMPLETED.
13. LONGITUDINAL CONSTRUCTION JOINTS IN THE DECK SLAB SHALL BE SEALED WITH HIGH MOLECULAR WEIGHT METHACRYLATE (HMWM). INCLUDE WITH ITEM 511, CLASS HP CONCRETE, BRIDGE DECK, AS PER PLAN, FOR PAYMENT.

LEGEND

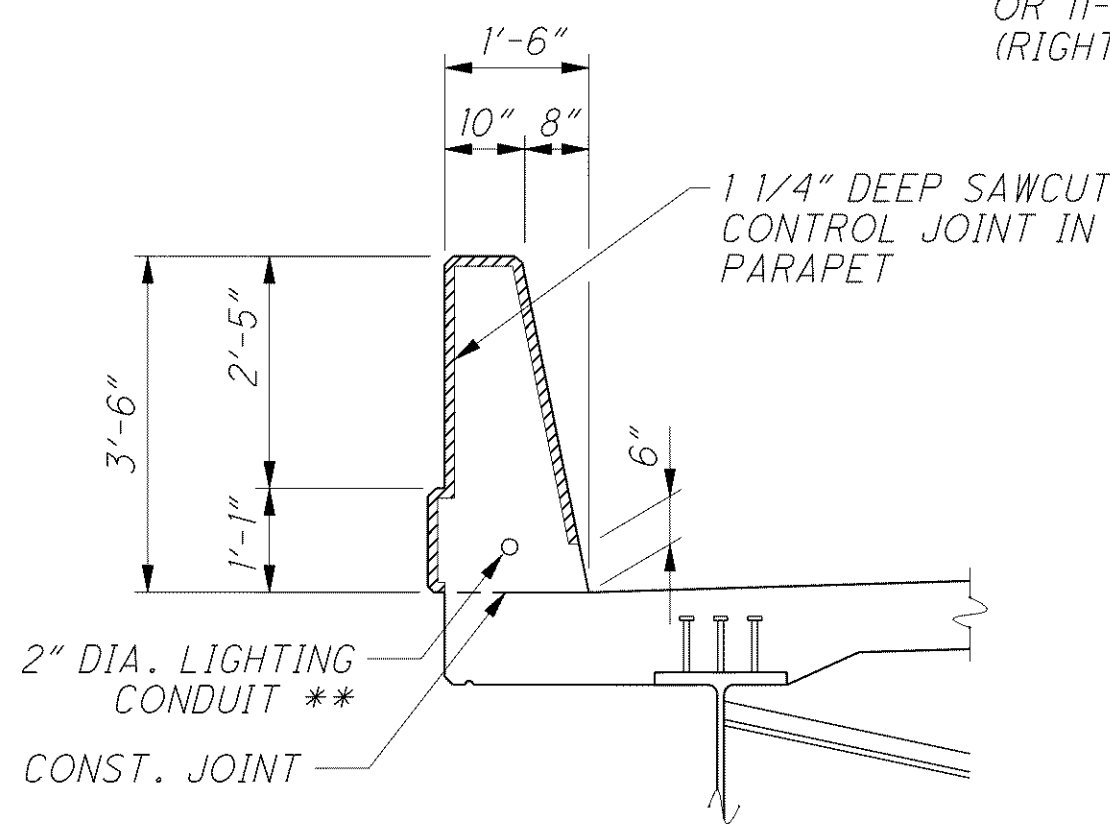
- \* - INDICATES DIMENSIONS MEASURED PERPENDICULAR TO CENTERLINE EXISTING BEAMS.
- \*\* - INCLUDE WITH LIGHTING QUANTITIES FOR PAYMENT.



TYPE A CONCRETE BARRIER



MEDIAN DEFLECTOR PARAPET DETAIL



DEFLECTOR PARAPET DETAIL

DESIGN AGENCY: **ARCADIS**  
 ARCADIS U.S., Inc.  
 100 Superior Avenue, Suite 1250 Cleveland, Ohio 44114  
 Tel: 216-781-6177 Fax: 216-781-6243 www.arcadis-us.com

DATE: 12/07  
 REVIEWED: RBB  
 STRUCTURE FILE NUMBER: 4300150 (L)  
 DESIGNED: FJC  
 CHECKED: RHC  
 DRAWN: CAF  
 REVISIONS:

TRANSVERSE SECTION  
 BRIDGE NO. LAK-2-0530 L&R  
 STATE ROUTE 2 OVER CHAGRIN RIVER

LAK-2-3.32  
 PID 13486

40/56  
 1502  
 1679