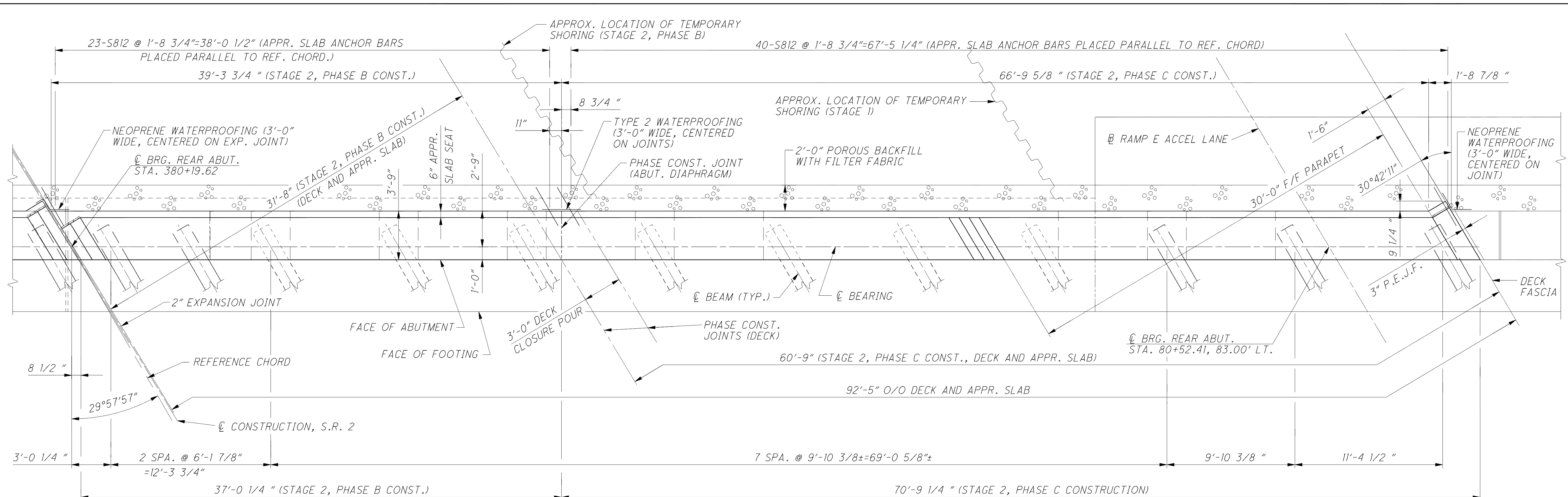


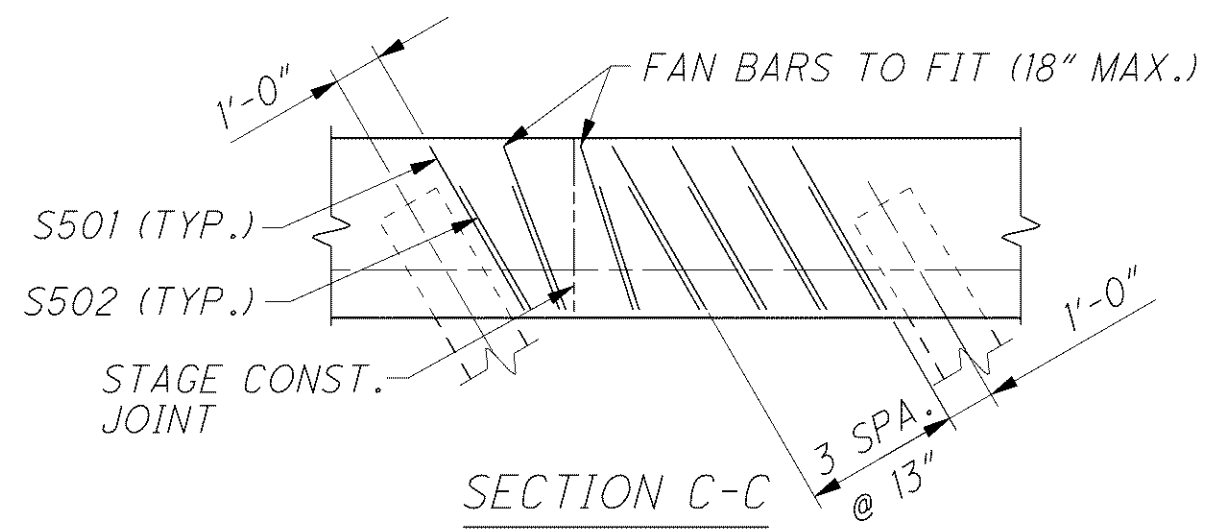
C:\Project\CV000048A001\Drawing\LAK\13486\bridge\LAK002\_0530L\sheets\002\_0530CSD007.dgn 6/24/2008 5:13:05 PM mbachter



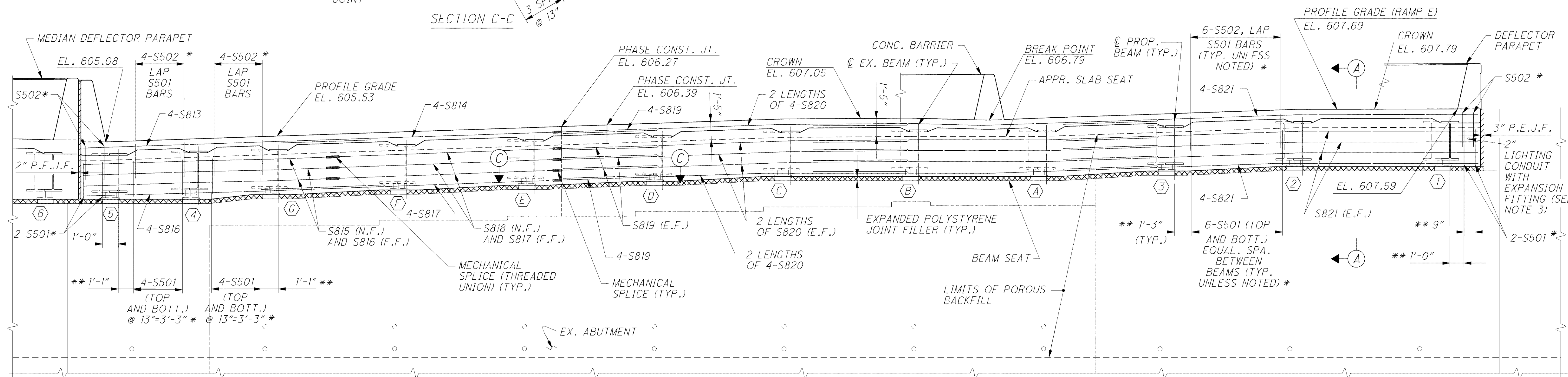
PLAN (LEFT STRUCTURE)

NOTES

- ELEVATIONS ARE TAKEN AT THE CENTERLINE OF THE ABUTMENT BEARINGS.
- FOR SECTION A-A AND ADDITIONAL ABUTMENT DIAPHRAGM DETAILS AND NOTES SEE SHEETS 36 56, 37 56, 38 56 AND 39 56.
- LIGHTING CONDUIT SHALL BE INCLUDED WITH LIGHTING QUANTITIES FOR PAYMENT.



- \* REINFORCEMENT TO BE PLACED PARALLEL WITH THE CENTERLINE OF THE BEAMS.
- \*\* DIMENSIONS TAKEN PERPENDICULAR TO CENTERLINE OF BEAM.



ELEVATION (LEFT STRUCTURE)

DESIGN AGENCY: **ARCADIS**  
 ARCADIS U.S., Inc.  
 100 Superior Avenue, Suite 1250 Cleveland, Ohio 44114  
 Tel: 216-781-6177 Fax: 216-781-6243 www.arcadis-us.com

DATE: 12/07

REVIEWED: RBB

DRAWN: CAF

DESIGNED: F JG

CHECKED: RHC

STRUCTURE FILE NUMBER: 4300750 (L)

REVISED: 4300785 (R)

BRIDGE NO. LAK-2-0530 L&R

STATE ROUTE 2 OVER CHAGRIN RIVER

**LAK-2-3.32**

**PID 13486**

35/56

1497

1679