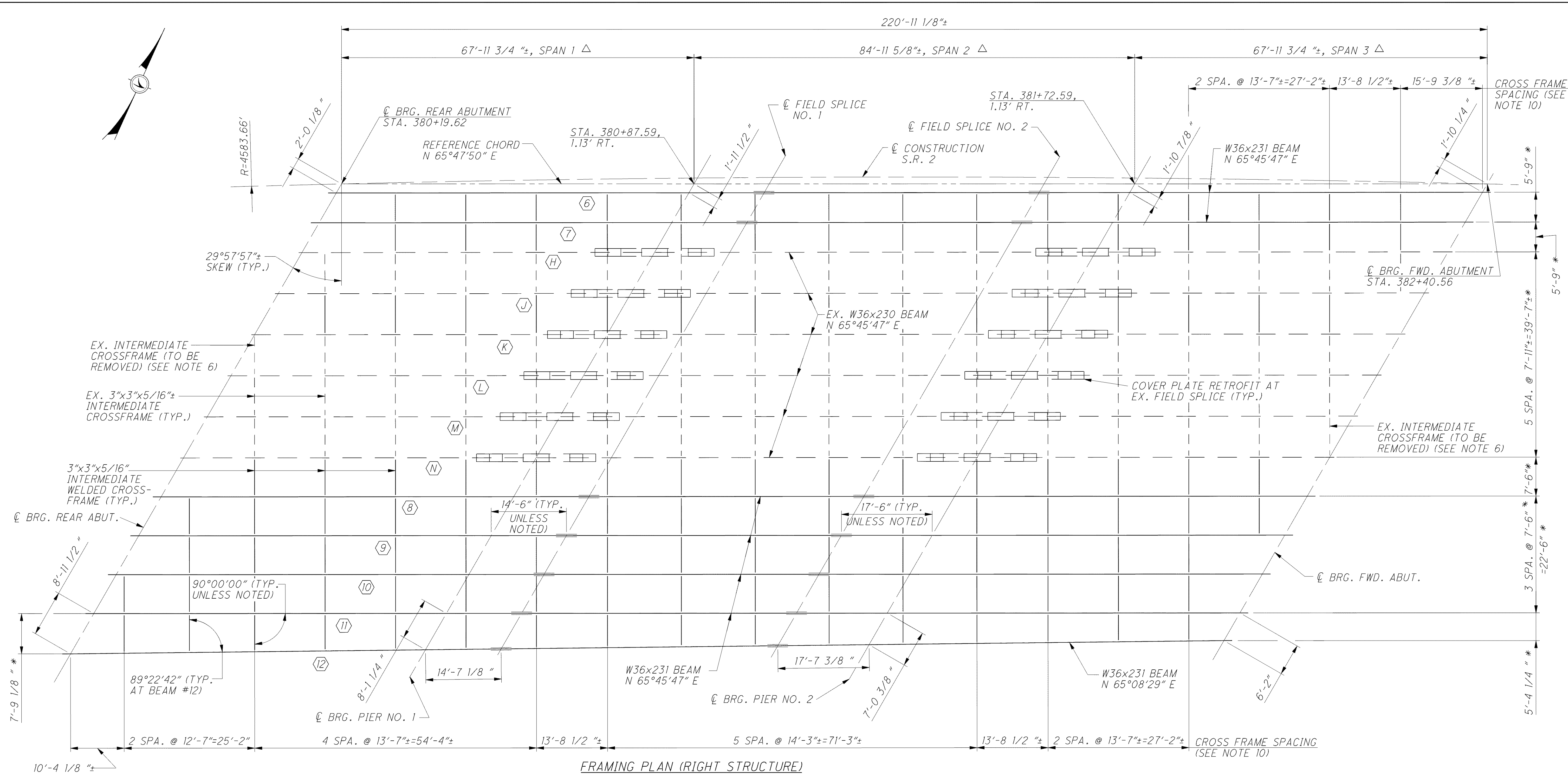


C:\Project\CV000048A001\Drawing\LAK\13486\bridge\LAK002_0530L\sheets\002_0530CSD002.dgn 6/24/2008 5:12:08 PM mbechter



FRAMING PLAN (RIGHT STRUCTURE)

LEGEND

- △ MEASURED ALONG REFERENCE CHORD
- * INDICATES DIMENSIONS MEASURED PERPENDICULAR TO CENTERLINE EXISTING BEAMS

NOTES

1. FOR LEGEND OF ABBREVIATIONS SEE SHEET [4 | 56] .
2. FOR CENTERLINE SCHEMATIC DETAIL SEE SHEET [3 | 56] .
3. FOR LEFT STRUCTURE FRAMING PLAN, BEAM ELEVATIONS, FIELD SPLICE DETAILS, EXISTING COVER PLATE RETROFIT DETAILS AND OTHER STEEL DETAILS SEE SHEETS [29 | 56] , [31 | 56] AND [32 | 56] .
4. FOR BEARING DETAILS SEE SHEET [28 | 56] .
5. THE CROSSFRAMES BETWEEN BEAMS J AND K SHALL NOT BE ERECTED UNTIL DECK POURS ON EACH SIDE OF CLOSURE POUR HAVE BEEN COMPLETED.
6. EXISTING INTERMEDIATE CROSSFRAMES THAT ARE MARKED FOR REMOVAL SHALL BE PAID FOR UNDER ITEM 202, PORTIONS OF THE STRUCTURE REMOVED, OVER 20 FOOT SPAN, AS PER PLAN.
7. INTERMEDIATE CROSSFRAMES SHALL BE TYPE 1. FOR DETAILS AND NOTES SEE O.D.O.T. STANDARD BRIDGE DRAWING GSD-1-96.
8. THE CROSSFRAME SPACING SHALL BE ADJUSTED AS NECESSARY TO PROVIDE 6" OF LONGITUDINAL CLEARANCE FROM THE CENTERLINE OF THE EXISTING BEAM WEB BUTT SPLICES.
9. FOR STRUCTURE GROUNDING DETAILS SEE O.D.O.T. STANDARD CONSTRUCTION DRAWING HL-50.21.
10. NEW CROSSFRAMES SHALL BE IN LINE WITH THE EXISTING CROSSFRAMES.

<p>DESIGN AGENCY ARCADIS U.S., Inc. 100 Superior Avenue, Suite 1250 Cleveland, Ohio 44114 Tel: 216-781-6177 Fax: 216-781-6243 www.arcadis-us.com</p>	<p>DATE 12/07</p>	<p>REVIEWED RBB</p>	<p>STRUCTURE FILE NUMBER 4300750 (L) 4300785 (R)</p>
<p>DESIGNED F JG</p>	<p>DRAWN CAF</p>	<p>CHECKED RHC</p>	<p>REVISED</p>
<p>FRAMING PLAN BRIDGE NO. LAK-2-0530 L&R STATE ROUTE 2 OVER CHAGRIN RIVER</p>			
<p>LAK-2-3.32</p>		<p>PID 13486</p>	
<p>30 / 56</p>			
<p>1492 1679</p>			