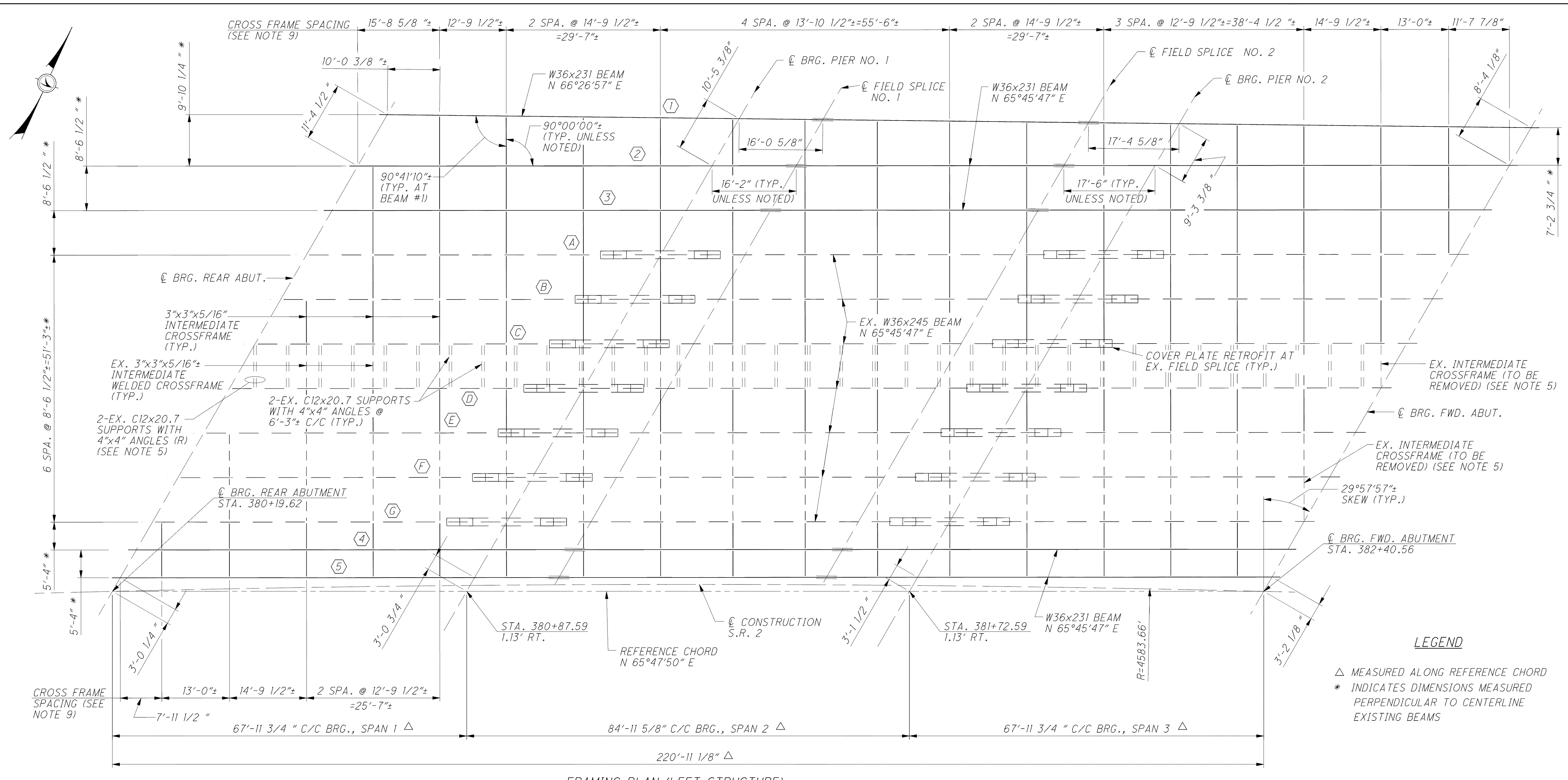


C:\Project\CV000048A001\Drawing\LAK\13486\bridge\LAK002_0530L_sheets\002_0530CSD001.dgn 6/24/2008 5:12:02 PM mbechter



FRAMING PLAN (LEFT STRUCTURE)

LEGEND
 Δ MEASURED ALONG REFERENCE CHORD
 * INDICATES DIMENSIONS MEASURED PERPENDICULAR TO CENTERLINE EXISTING BEAMS

NOTES

1. FOR LEGEND OF ABBREVIATIONS SEE SHEET [4 | 56] .
2. FOR CENTERLINE SCHEMATIC DETAIL SEE SHEET [3 | 56] .
3. FOR RIGHT STRUCTURE FRAMING PLAN, BEAM ELEVATIONS, FIELD SPLICE DETAILS, EXISTING COVER PLATE RETROFIT DETAILS AND OTHER STEEL DETAILS SEE SHEET [30 | 56] THRU [32 | 56] .
4. FOR BEARING DETAILS SEE SHEET [28 | 56] .
5. EXISTING INTERMEDIATE CROSSFRAMES AND C12x20.7 SUPPORTS THAT ARE MARKED FOR REMOVAL SHALL BE PAID FOR UNDER ITEM 202, PORTIONS OF STRUCTURE REMOVED, OVER 20 FOOT SPAN, AS PER PLAN.
6. INTERMEDIATE CROSSFRAMES SHALL BE TYPE 1. FOR DETAILS AND NOTES SEE O.D.O.T. STANDARD BRIDGE DRAWING GSD-1-96.
7. THE CROSSFRAME SPACING SHALL BE ADJUSTED AS NECESSARY TO PROVIDE 6" OF LONGITUDINAL CLEARANCE FROM THE CENTERLINE OF THE EXISTING BEAM WEB BUTT SPLICES.
8. FOR STRUCTURE GROUNDING DETAILS SEE O.D.O.T. STANDARD CONSTRUCTION DRAWING HL-50.21.
9. NEW CROSSFRAMES SHALL BE IN LINE WITH THE EXISTING CROSSFRAMES.
10. THE CROSSFRAMES BETWEEN BEAMS D AND E SHALL NOT BE ERECTED UNTIL DECK POURS ON EACH SIDE OF CLOSURE POUR HAVE BEEN COMPLETED.

 <small>ARCADIS C&M of Ohio, Inc. 100 Superior Avenue, Suite 1250 Cleveland, Ohio 44114 Tel: 216-781-6177 Fax: 216-781-6243 www.arcadis-us.com</small>	
DESIGNED: F JG CHECKED: RHC DRAWN: CAF REVISED:	DATE: 12/07 REVIEWED: RBB STRUCTURE FILE NUMBER: 4300750 (L) 4300785 (R)
BRIDGE NO. LAK-2-0530 L&R STATE ROUTE 2 OVER CHAGRIN RIVER	
FRAMING PLAN LAK-2-3.32 PID 13486	
29 / 56	
1491 1679	