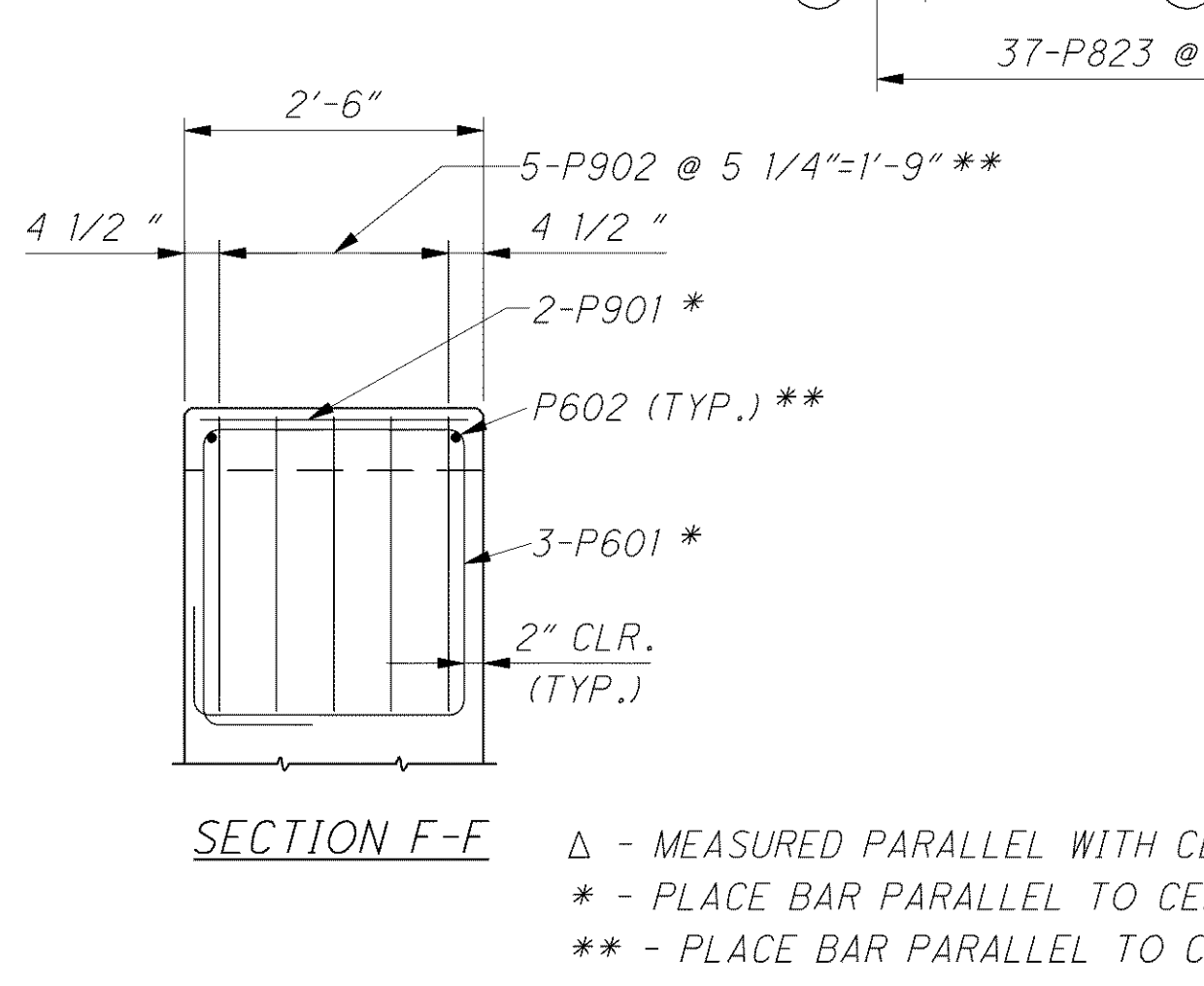
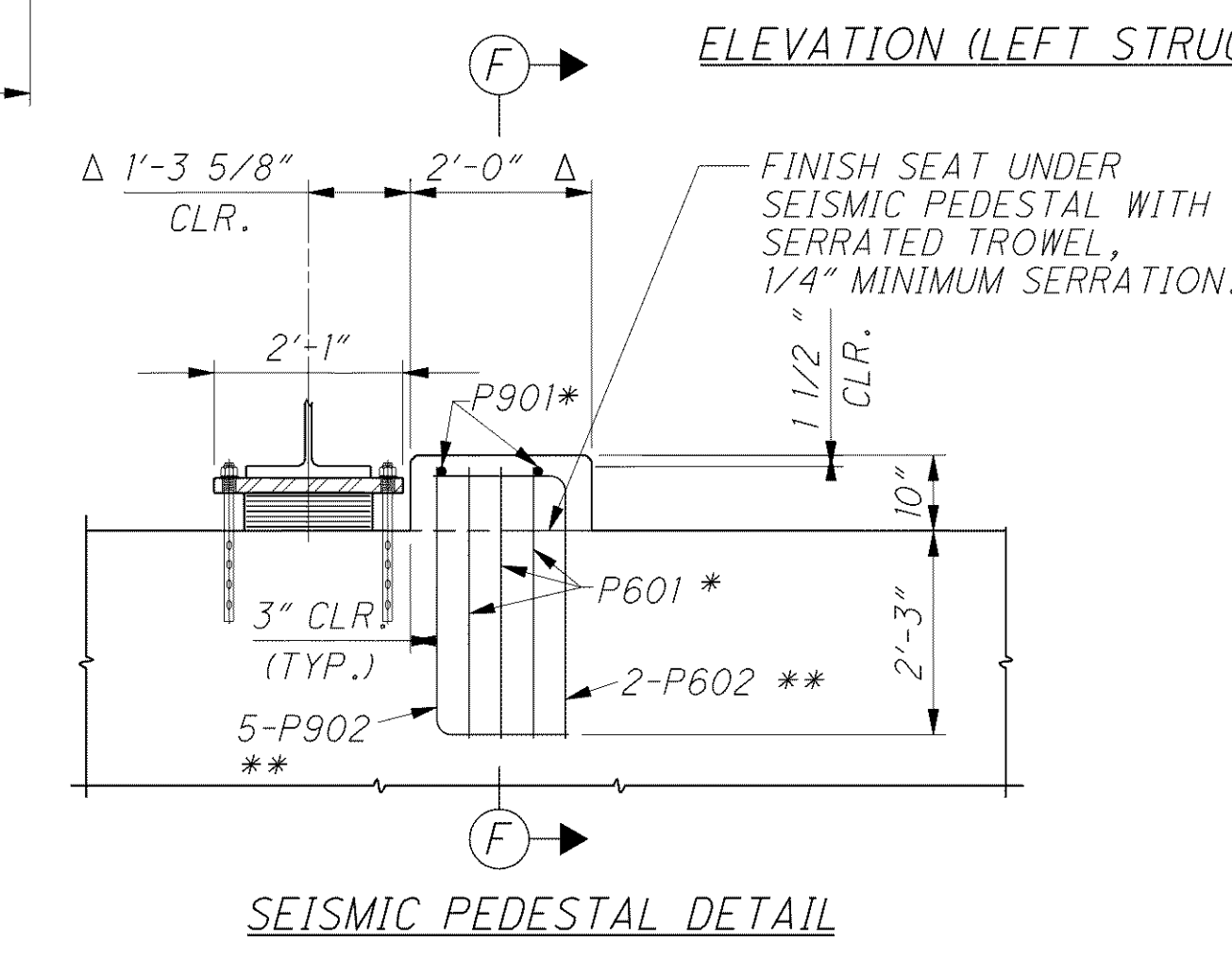
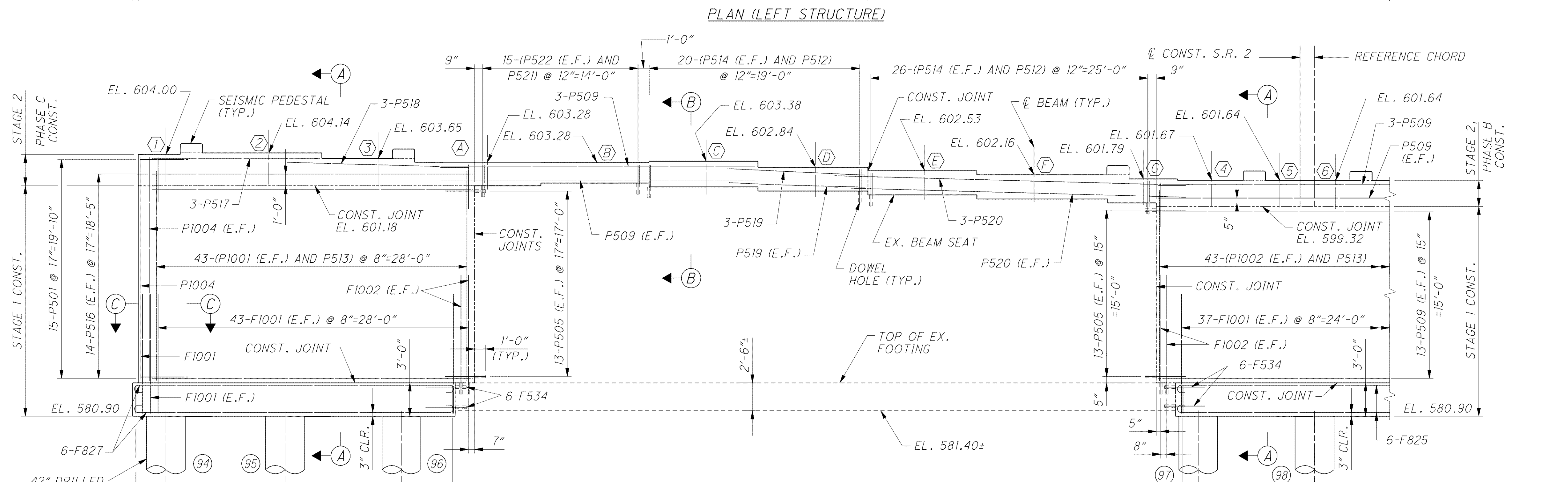
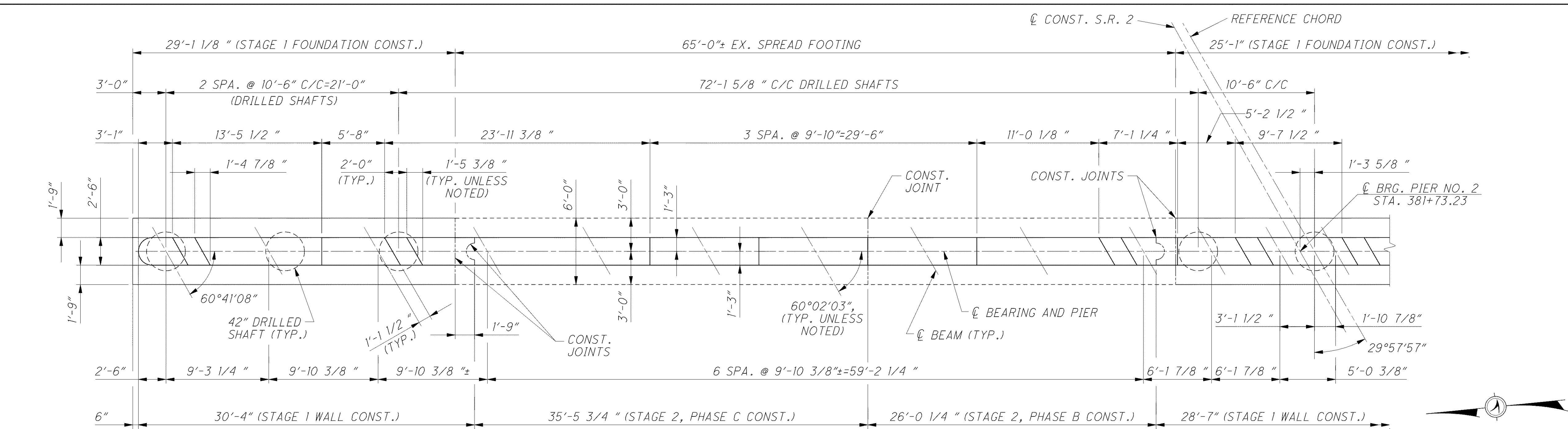


C:\Project\CV000048A001\Drawing\LAK\13486\bridge\LAK002_0530L\sheets\002_0530CP1003.dgn 6/26/2008 8:50:37 AM troxberry



- NOTES**
1. ALL DIMENSIONS ARE MEASURED ALONG CENTERLINE OF PIER.
 2. FOR SECTION A-A, B-B AND C-C SEE SHEET 24/56 AND 25/56.
 3. FOR LEGEND OF ABBREVIATIONS SEE SHEET 4/56.
 4. FOR CENTERLINE SCHEMATIC SEE SHEET 3/56.
 5. MINIMUM BAR LAPS ARE AS FOLLOWS:
 #5 BAR = 38" #8 BAR = 87" #10 BAR = 123"

Δ - MEASURED PARALLEL WITH CENTERLINE OF BEARING
 * - PLACE BAR PARALLEL TO CENTERLINE OF BEAM
 ** - PLACE BAR PARALLEL TO CENTERLINE OF BEARING