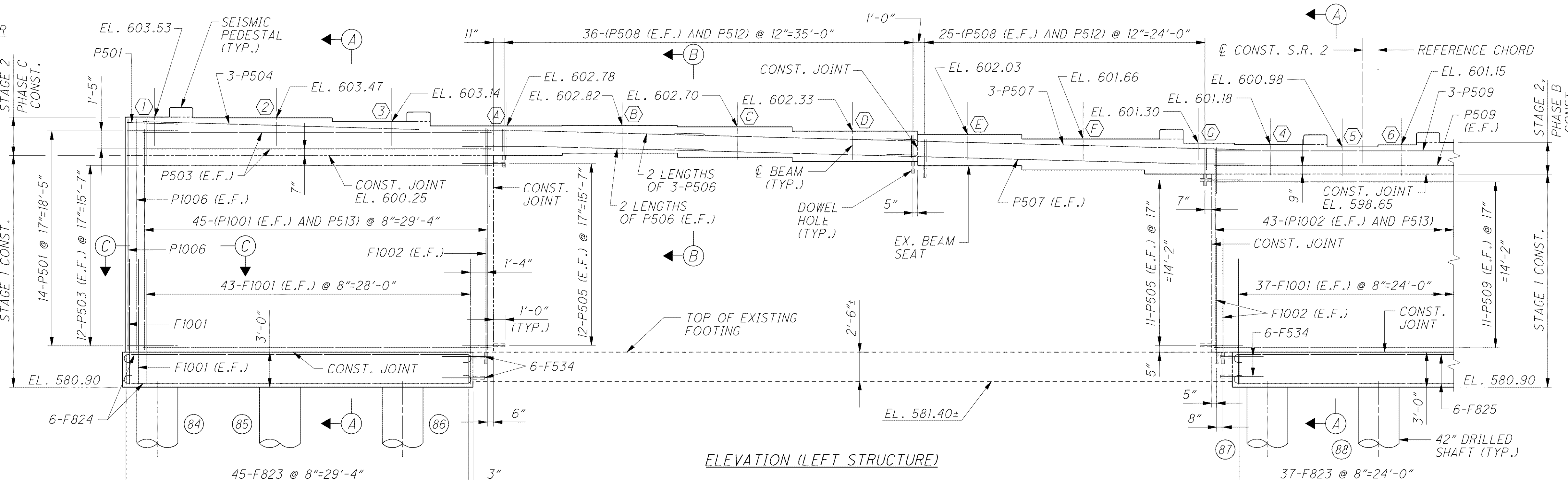
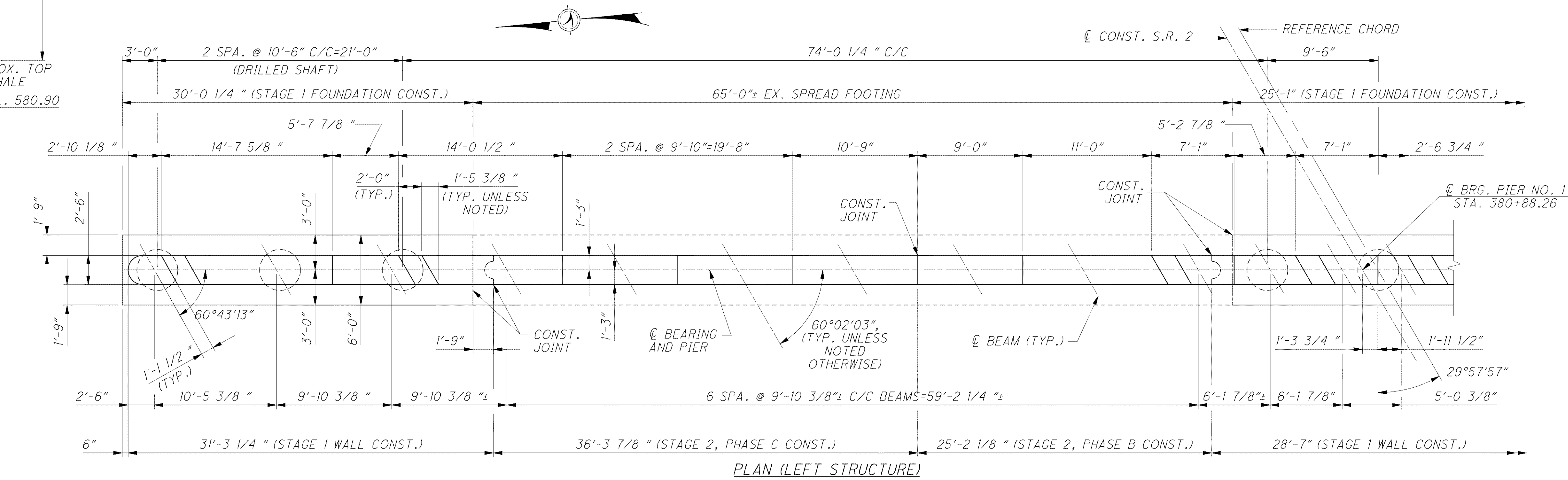
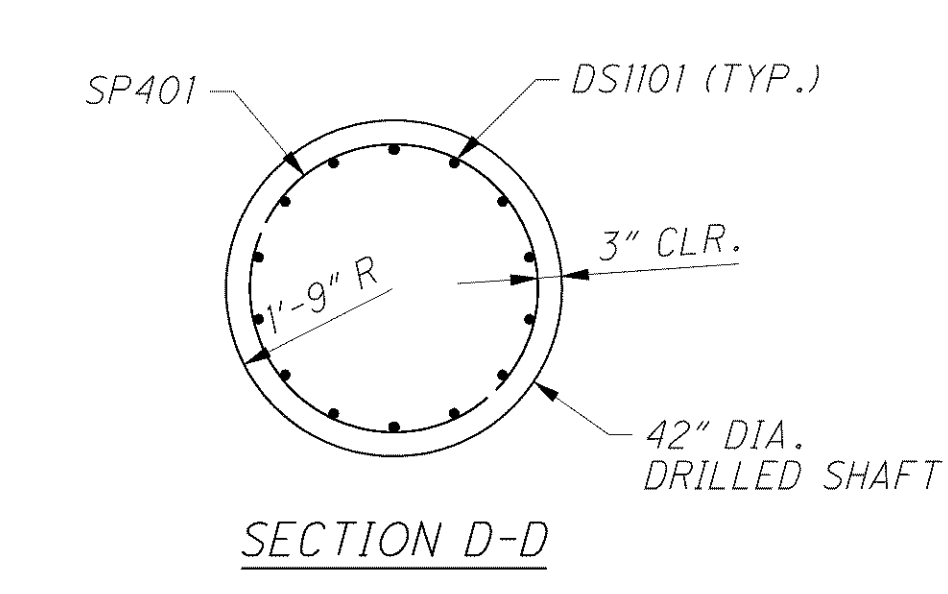
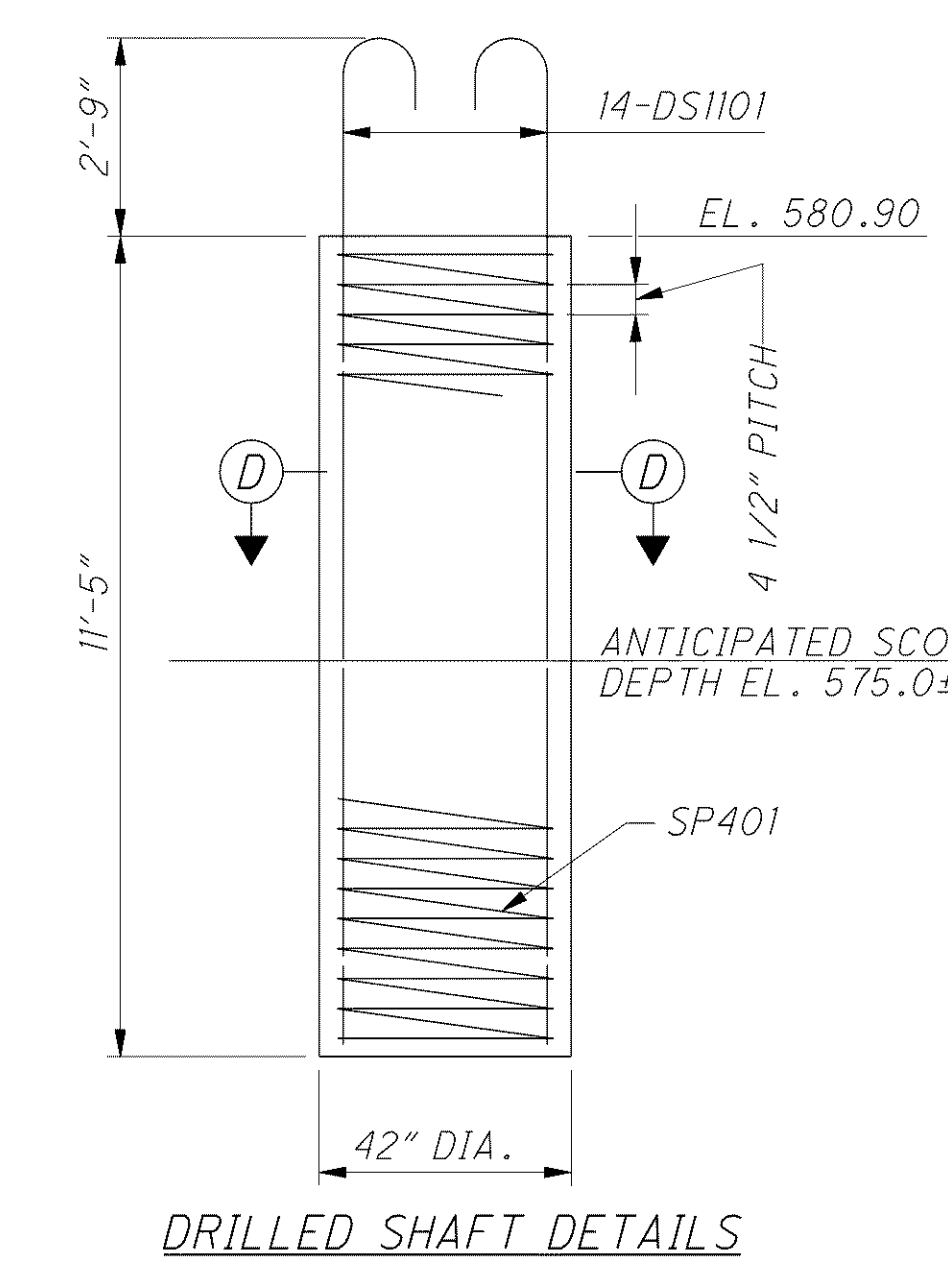
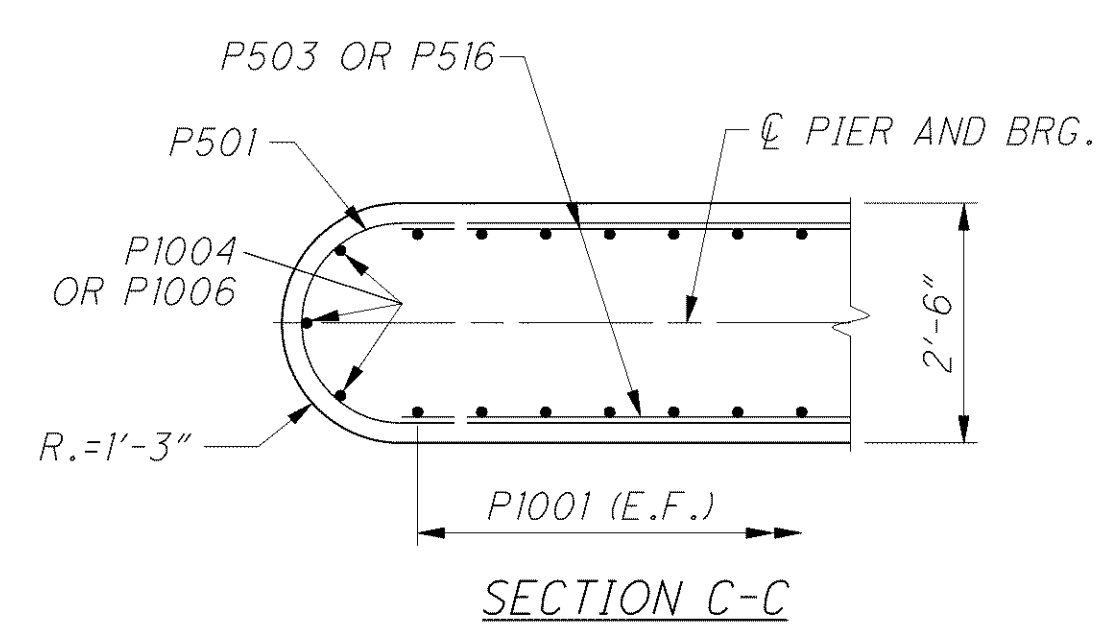
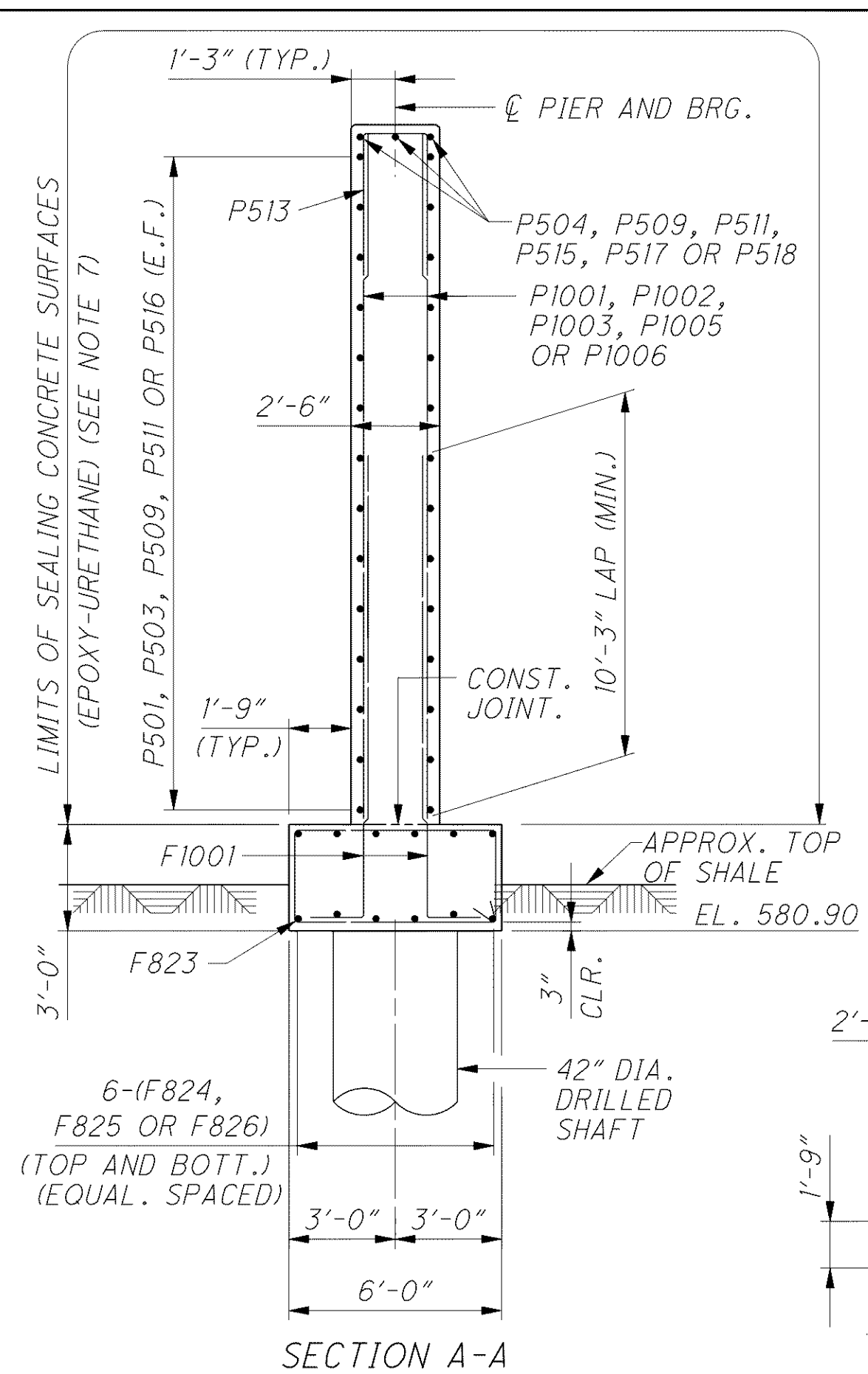


C:\Project\CV000048A001\Drawing\LAK\13486\bridge\LAK002_0530L\sheets\002_0530C\P1001.dgn 6/30/2008 6:26:50 PM mbechter



- NOTES**
- ALL DIMENSIONS ARE MEASURED ALONG CENTERLINE OF PIER.
 - FOR SECTION B-B SEE SHEET 25/56.
 - FOR LEGEND OF ABBREVIATIONS SEE SHEET 4/56.
 - MINIMUM BAR LAPS ARE AS FOLLOWS:
#5 BAR = 38" #8 BAR = 87" #10 BAR = 123"
 - FOR BEARING DETAILS SEE SHEET 28/56.
 - FOR SEISMIC PEDESTAL DETAILS SEE SHEET 26/56.
 - DO NOT APPLY SEALER TO CONCRETE SURFACES UNDER THE BEARING LOCATION.
 - DRILLED SHAFT REINFORCEMENT SHALL BE INCLUDED WITH RESPECTIVE ITEM 524, DRILLED SHAFTS FOR PAYMENT.
 - EXISTING CONCRETE SURFACES WHICH ARE TO BE IN CONTACT WITH PROPOSED CONCRETE SHALL BE ROUGHENED PRIOR TO CONCRETE PLACEMENT.

DESIGN AGENCY: **ARCADIS**
 ARCADIS C&M of Ohio, Inc.
 100 Superior Avenue, Suite 1650 Cleveland, Ohio 44114
 Tel: 216-781-8177 Fax: 216-781-8243 www.arcadis-us.com

DESIGNED	JL	CHECKED	JMA
DRAWN	MLF	REVISED	
REVIEWED	FJG	STRUCTURE FILE NUMBER	4300750 (L) 4300785 (R)
DATE	12/07		

PIER 1 PLAN AND ELEVATION
 BRIDGE NO. LAK-2-0530 L&R
 STATE ROUTE 2 OVER CHAGRIN RIVER

LAK-2-3.32
PID 13486

24/56

1486
1679