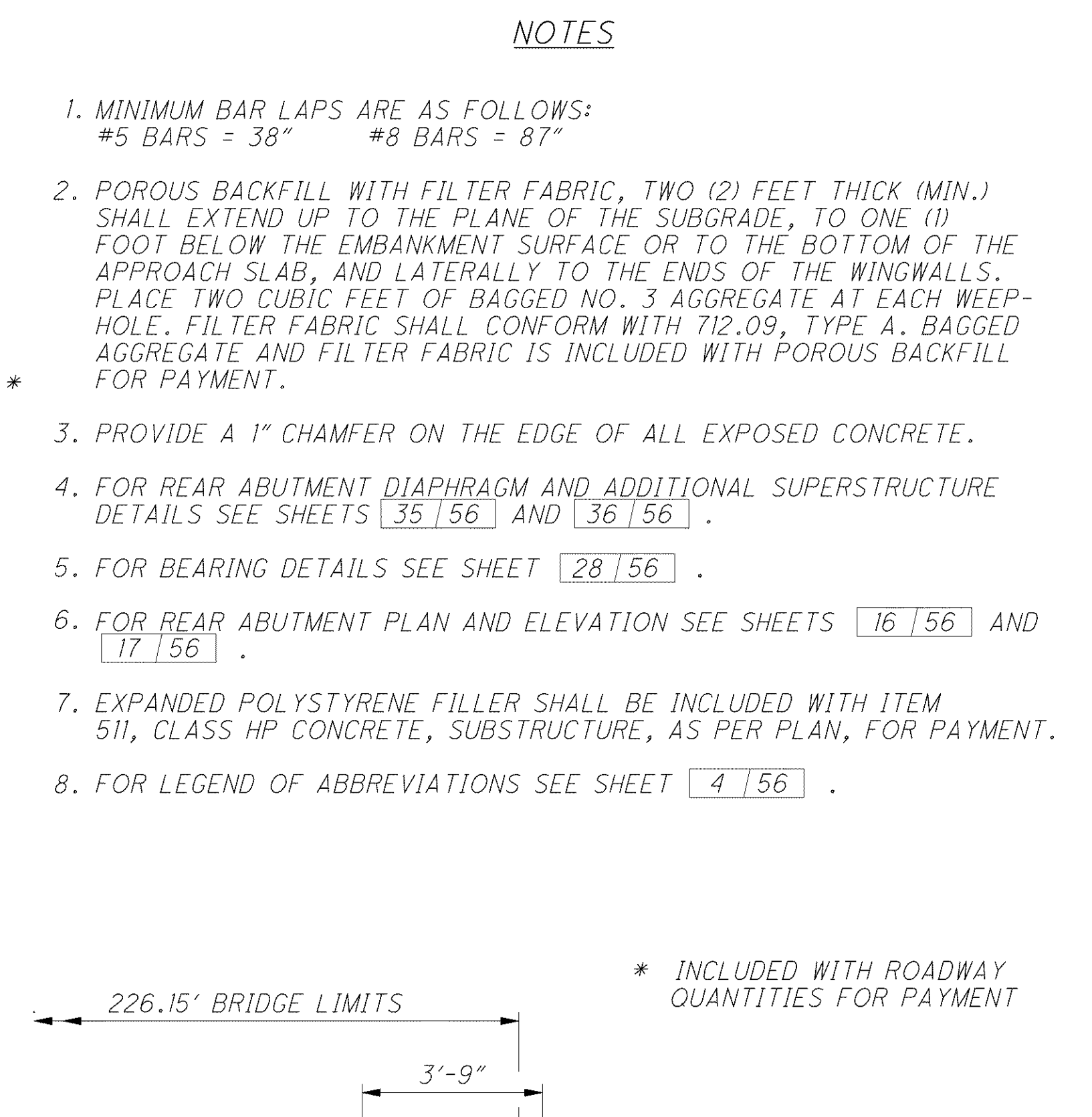
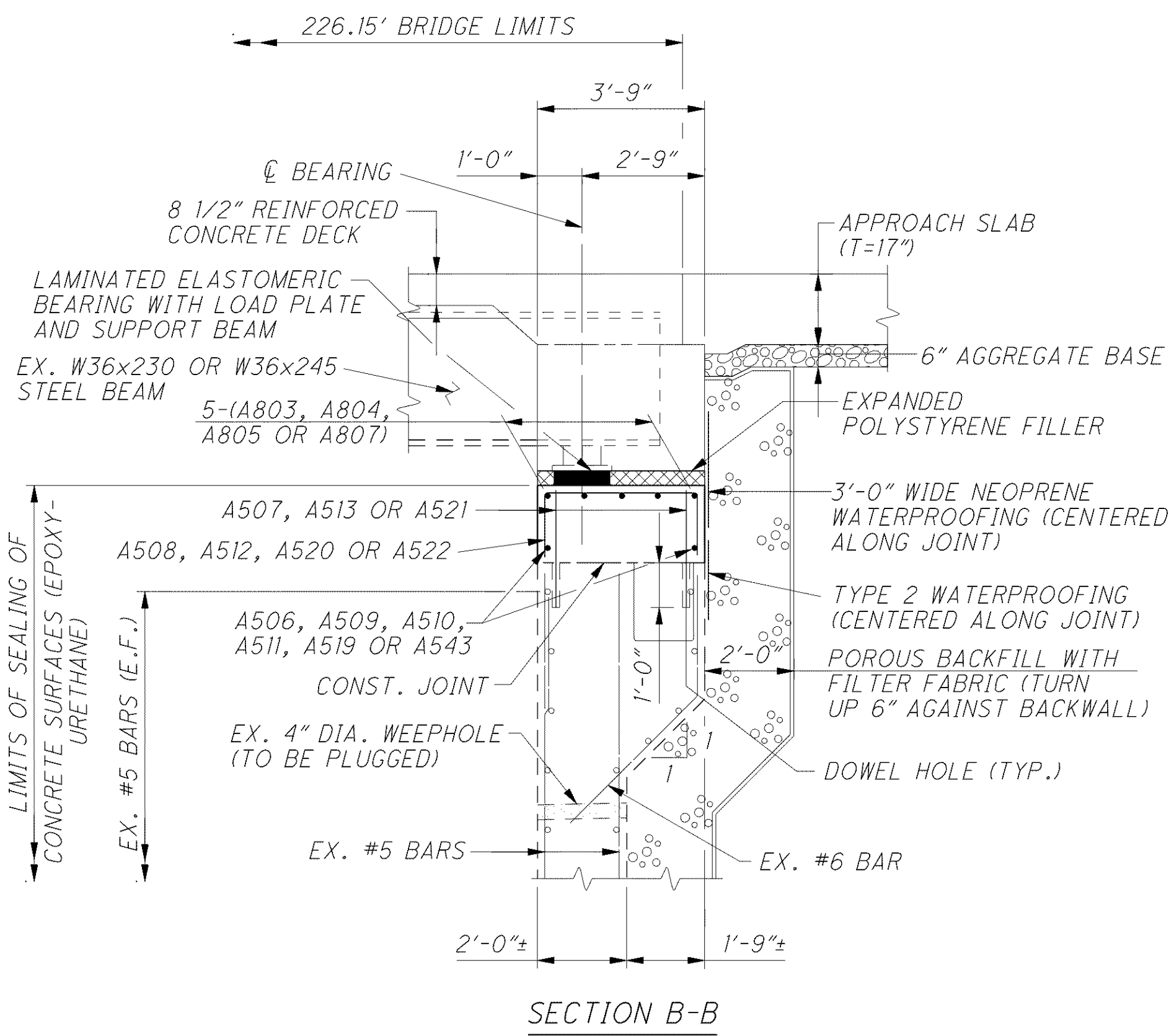
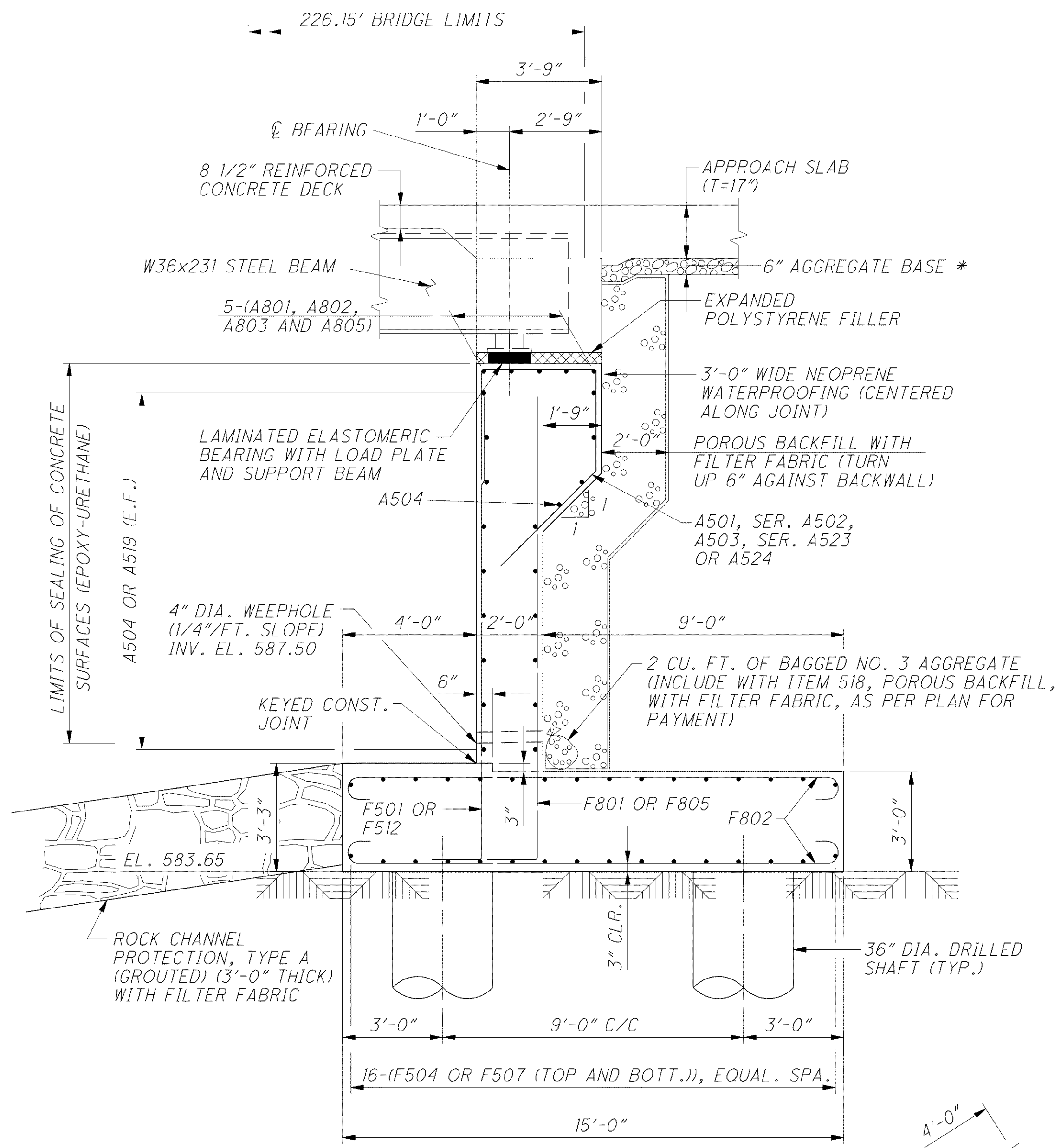


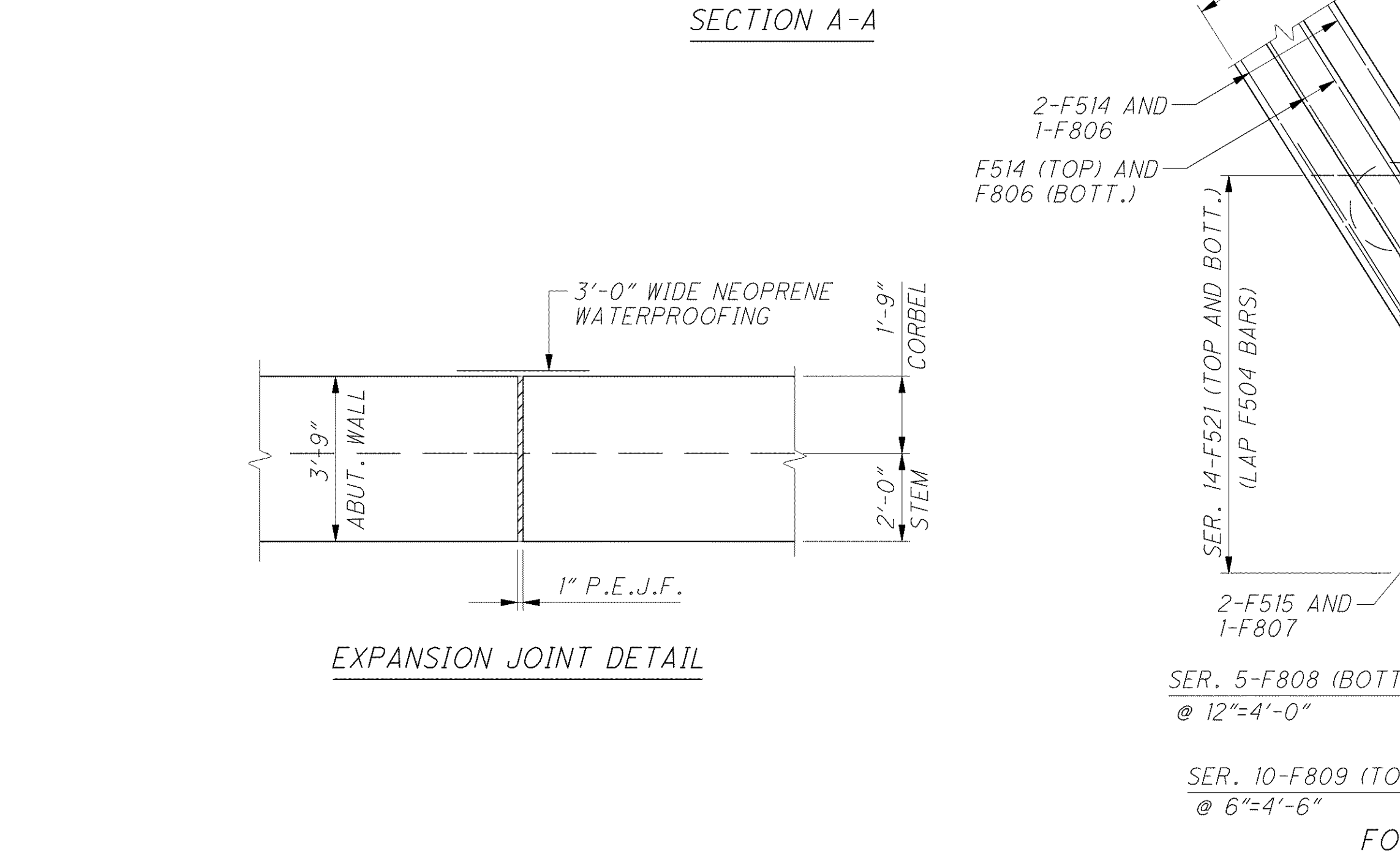
C:\Project\CV000048A001\Drawing\LAK\13486\bridge\LAK002_0530L_sheets\LAK002_0530CAR003.dgn 6/24/2008 5:06:23 PM mbechter



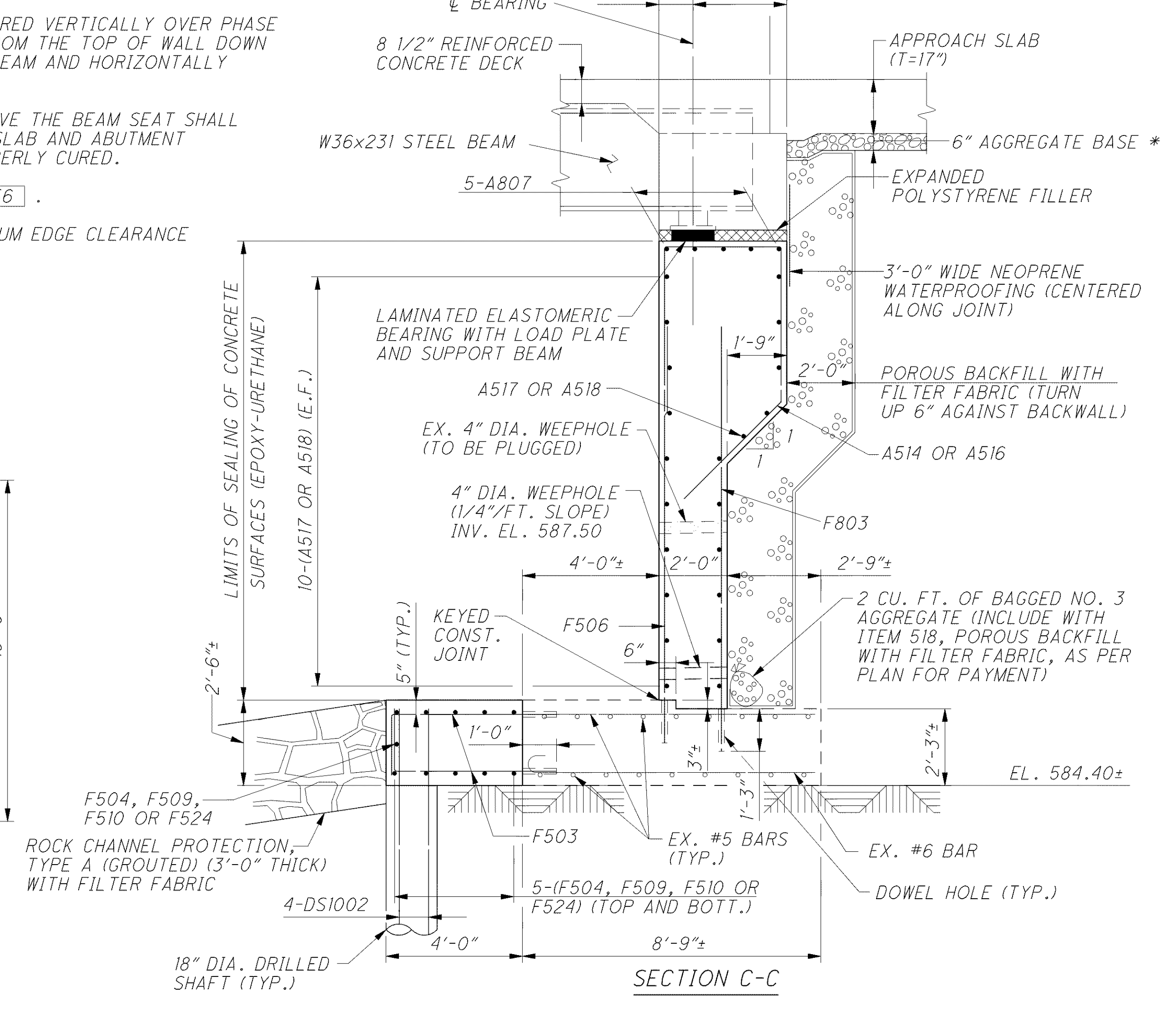
NOTES

1. MINIMUM BAR LAPS ARE AS FOLLOWS:
#5 BARS = 38" #8 BARS = 87"
2. POROUS BACKFILL WITH FILTER FABRIC, TWO (2) FEET THICK (MIN.) SHALL EXTEND UP TO THE PLANE OF THE SUBGRADE, TO ONE (1) FOOT BELOW THE EMBANKMENT SURFACE OR TO THE BOTTOM OF THE APPROACH SLAB, AND LATERALLY TO THE ENDS OF THE WINGWALLS. PLACE TWO CUBIC FEET OF BAGGED NO. 3 AGGREGATE AT EACH WEEP-HOLE. FILTER FABRIC SHALL CONFORM WITH 712.09, TYPE A. BAGGED AGGREGATE AND FILTER FABRIC IS INCLUDED WITH POROUS BACKFILL FOR PAYMENT.
3. PROVIDE A 1" CHAMFER ON THE EDGE OF ALL EXPOSED CONCRETE.
4. FOR REAR ABUTMENT DIAPHRAGM AND ADDITIONAL SUPERSTRUCTURE DETAILS SEE SHEETS 35/56 AND 36/56.
5. FOR BEARING DETAILS SEE SHEET 28/56.
6. FOR REAR ABUTMENT PLAN AND ELEVATION SEE SHEETS 16/56 AND 17/56.
7. EXPANDED POLYSTYRENE FILLER SHALL BE INCLUDED WITH ITEM 511, CLASS HP CONCRETE, SUBSTRUCTURE, AS PER PLAN, FOR PAYMENT.
8. FOR LEGEND OF ABBREVIATIONS SEE SHEET 4/56.

9. TYPE 2 WATERPROOFING SHALL BE CENTERED VERTICALLY OVER PHASE CONSTRUCTION JOINTS AND EXTENDED FROM THE TOP OF WALL DOWN TO THE TOP OF FOOTING/OR EXISTING BEAM AND HORIZONTALLY ALONG CONSTRUCTION JOINTS.
10. WINGWALL AND ABUTMENT CONCRETE ABOVE THE BEAM SEAT SHALL NOT BE PLACED UNTIL AFTER THE DECK SLAB AND ABUTMENT DIAPHRAGM HAVE BEEN PLACED AND PROPERLY CURED.
11. FOR FOUNDATION PLAN SEE SHEET 15/56.
12. ALL DOWEL BARS SHALL HAVE A 4" MINIMUM EDGE CLEARANCE UNLESS NOTED.



FOUNDATION REINFORCING, SECTION D-D



* INCLUDED WITH ROADWAY QUANTITIES FOR PAYMENT

REAR ABUTMENT DETAILS
BRIDGE NO. LAK-2-0530 L&R
STATE ROUTE 2 OVER CHAGRIN RIVER

LAK-2-3.32
PID 13486

18/56

1480
1679

DESIGN AGENCY
ARCADIS
ARCADIS U.S., Inc.
1800 Superior Avenue, Suite 1250 Cleveland, Ohio 44114
Tel: 216-781-6177 Fax: 216-781-6243 www.arcadis-us.com

DESIGNED	FJC	CHECKED	MVD
DRAWN	CAF	REVISED	
REVIEWED	RBB	STRUCTURE FILE NUMBER	4300750 (L) 4300785 (R)
DATE	12/07		