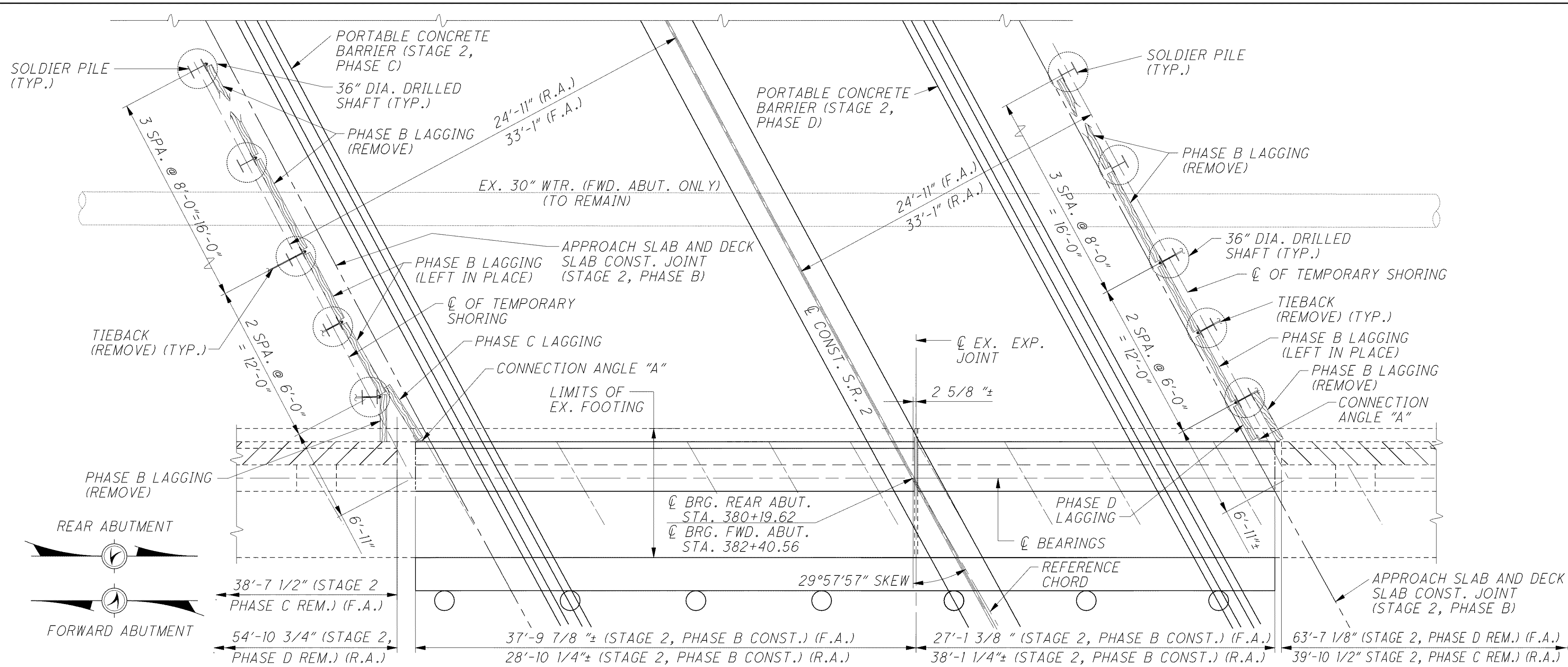
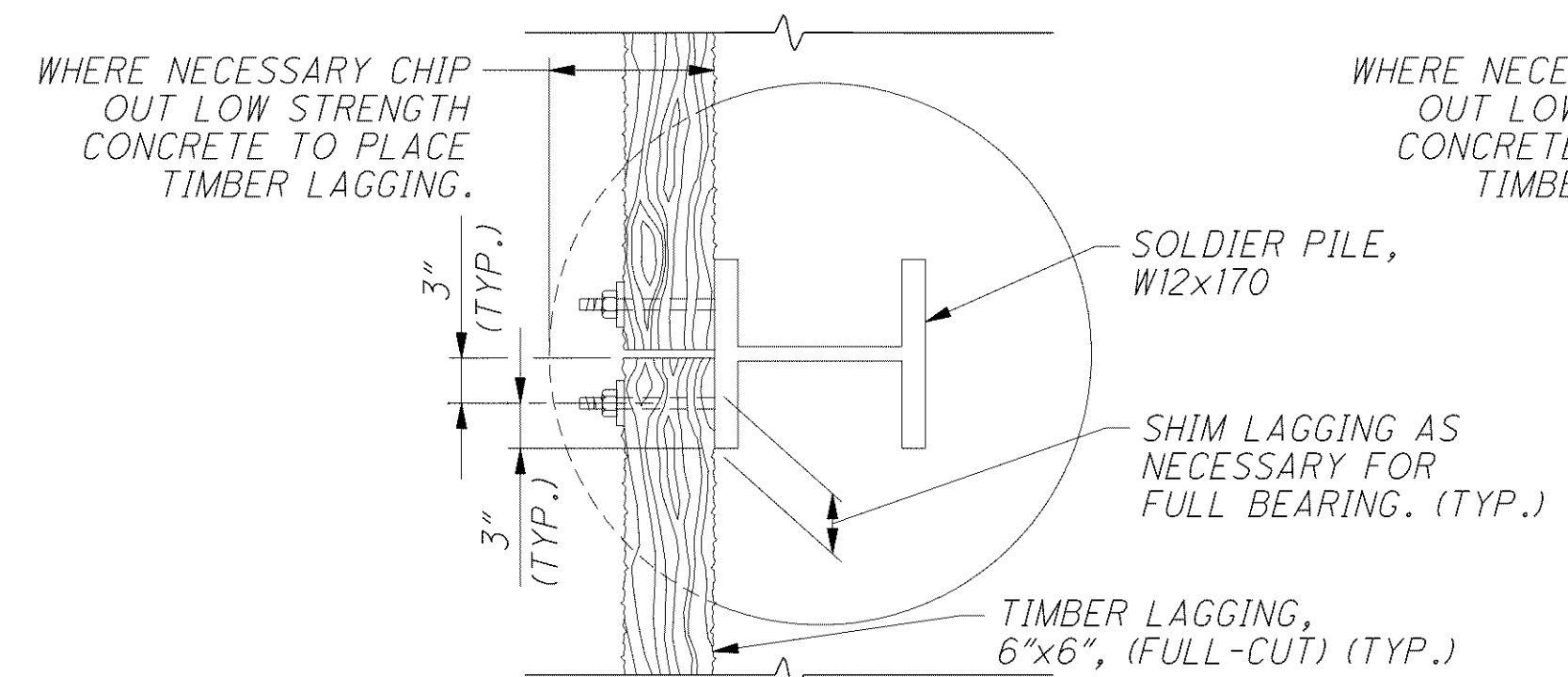


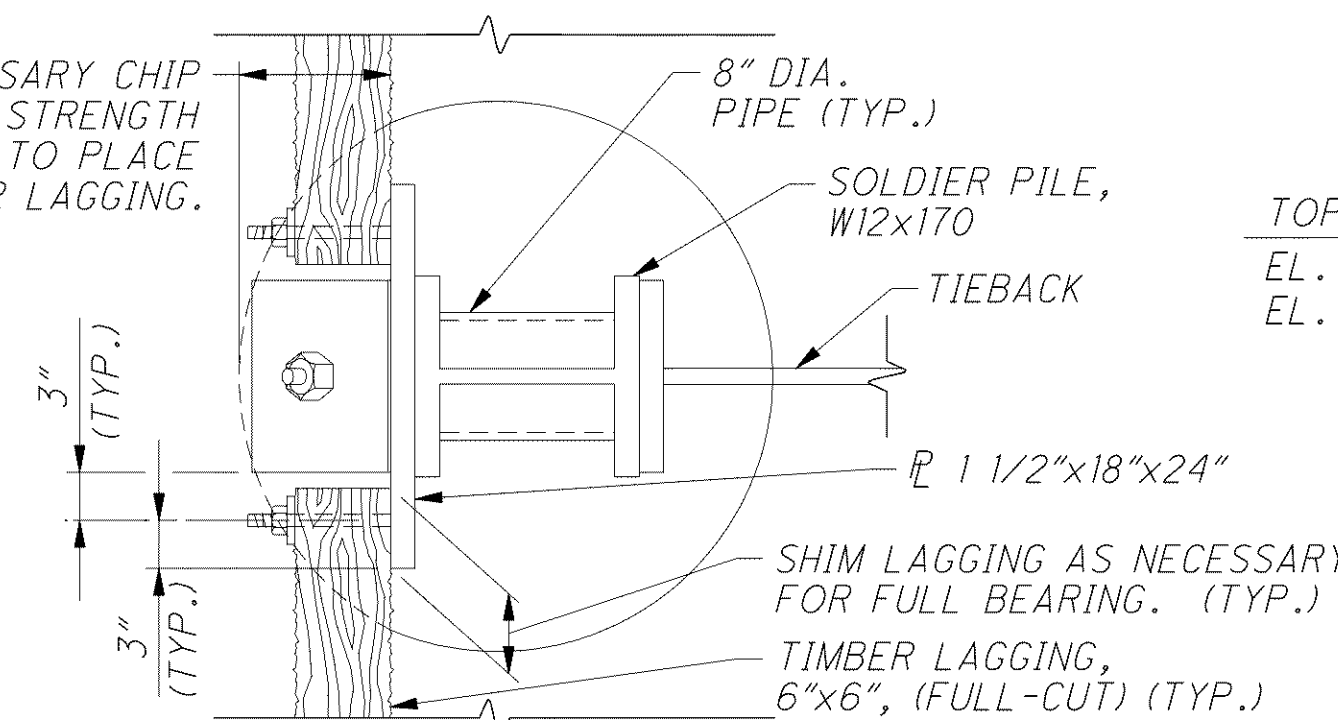
C:\Project\CV000048A001\Drawing\LAK\13486\bridge\LAK002_0530L_sheets\002_0530CSH002.dgn 6/24/2008 5:15:05 PM mbechter



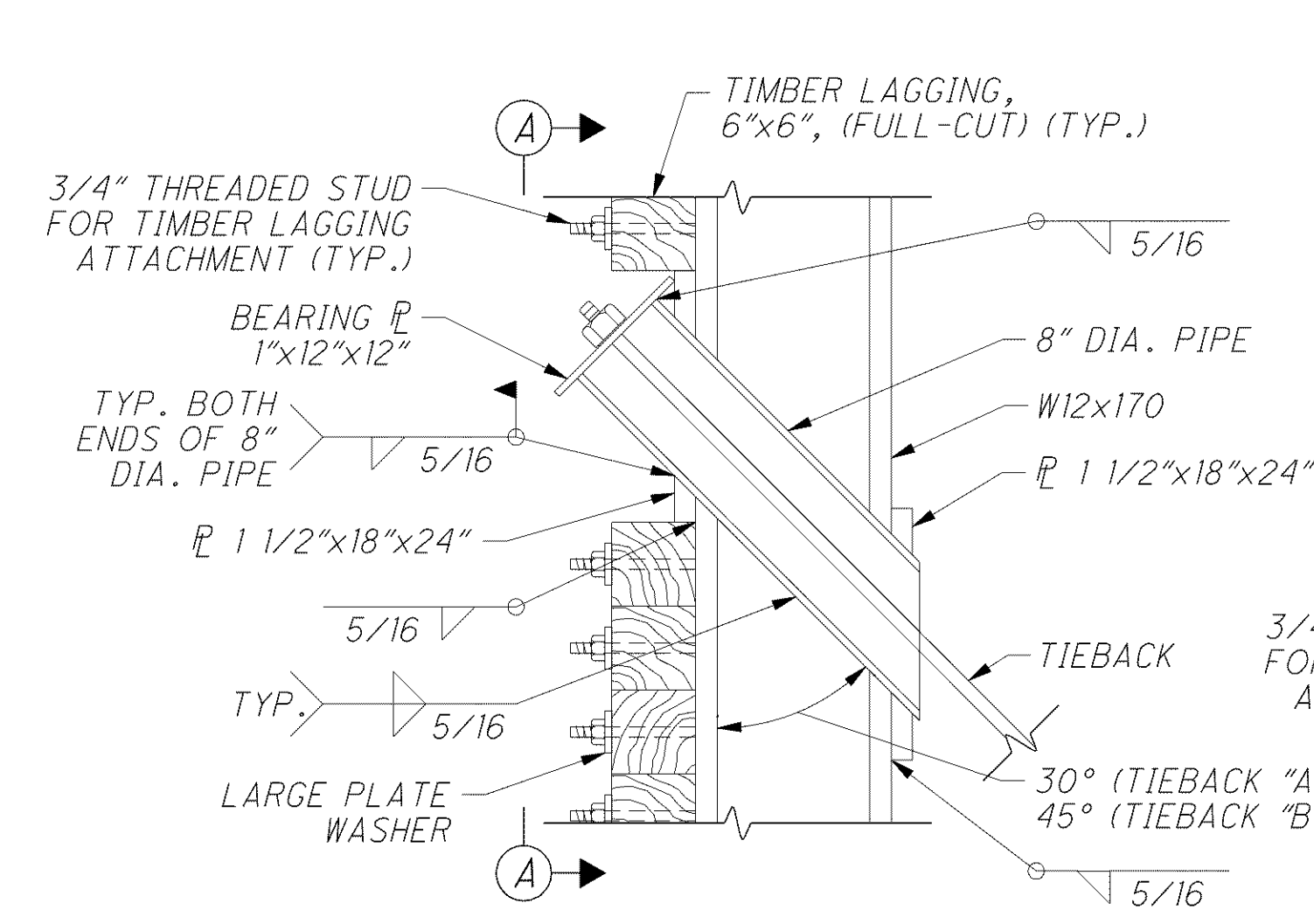
SHORING PLAN (STAGE 2, PHASE C AND D REMOVAL)
(FORWARD ABUTMENT SHOWN, REAR ABUTMENT SIMILAR)



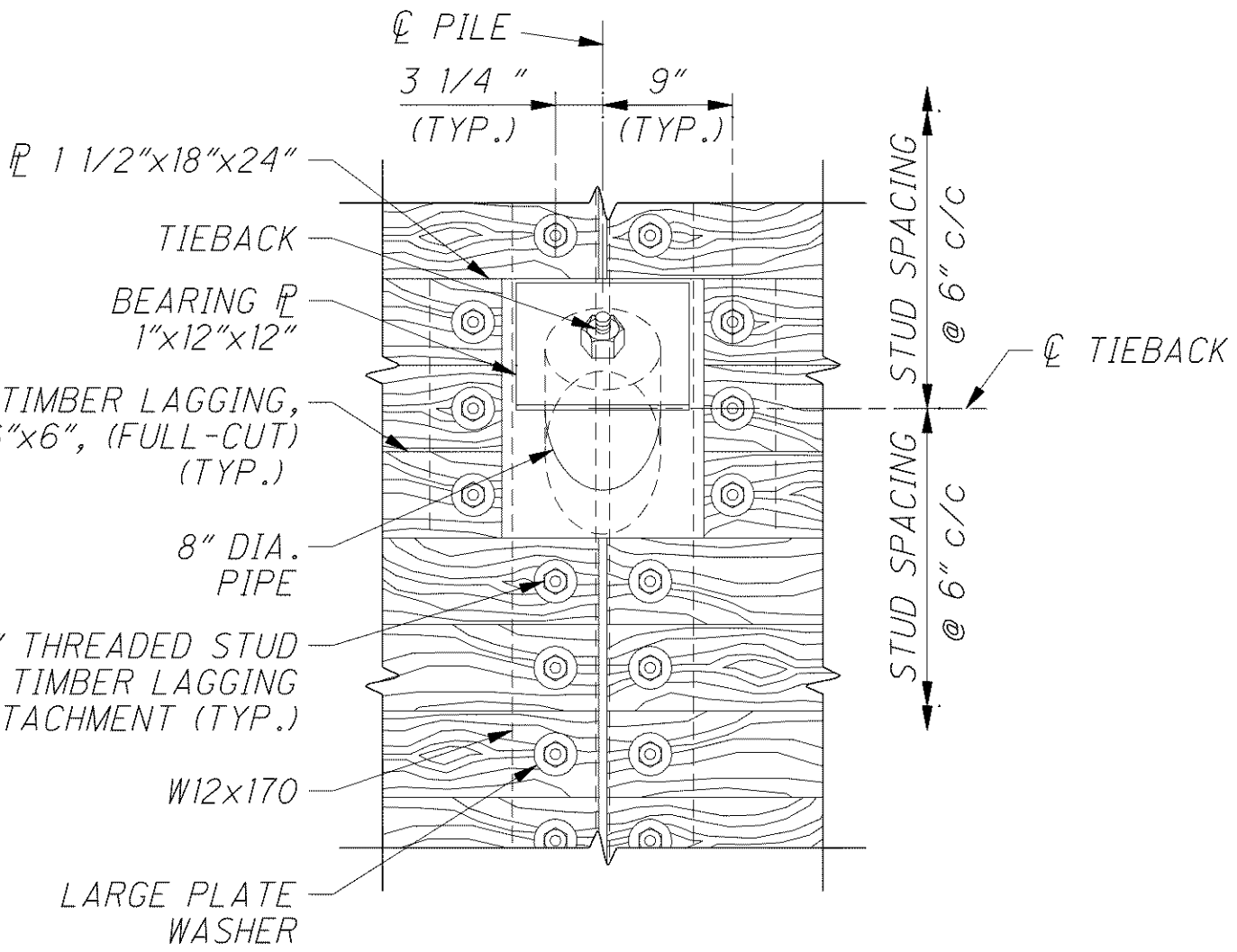
TYPICAL LAGGING ATTACHMENT



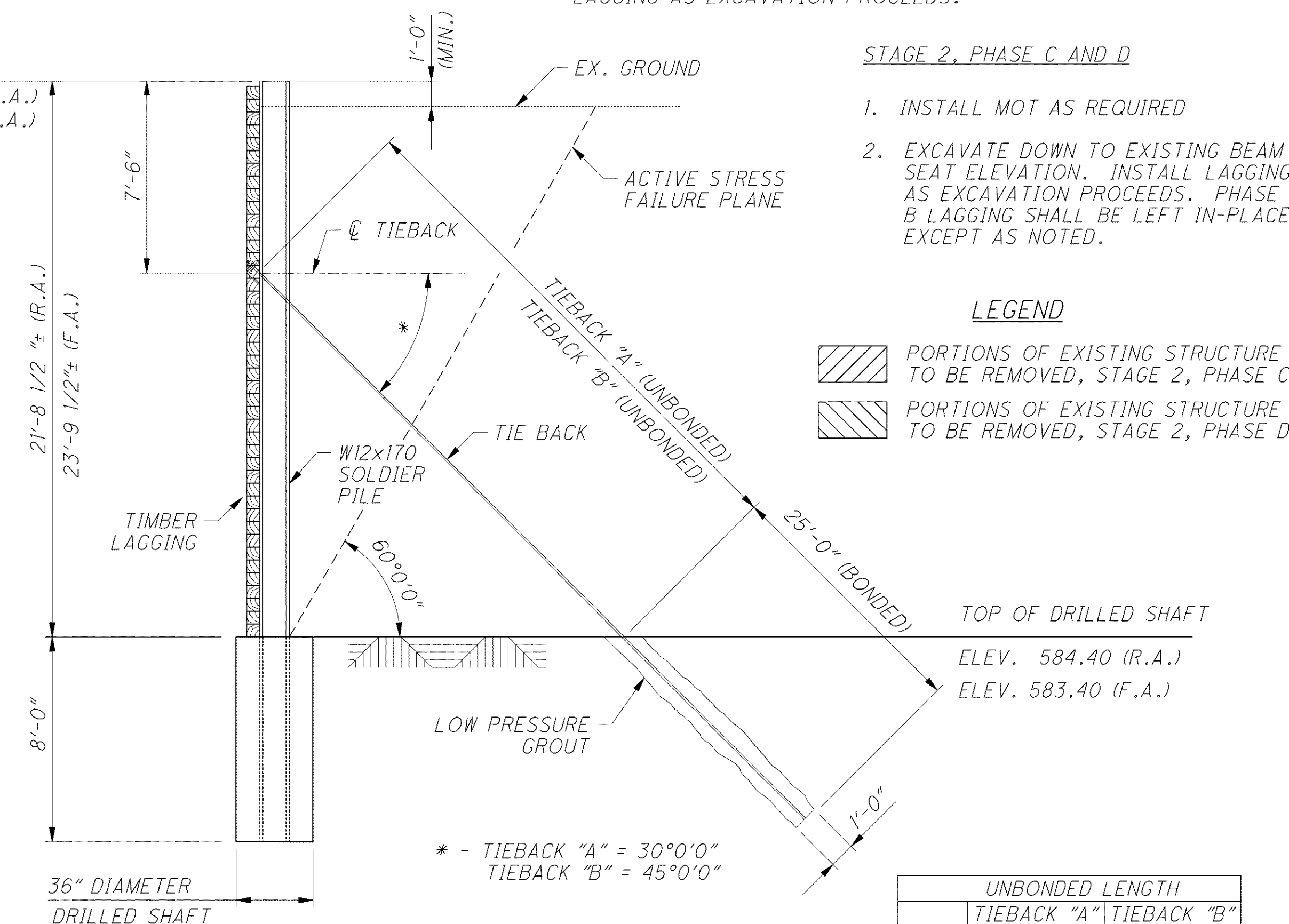
LAGGING ATTACHMENT @ TIE BACK



SOLDIER PILE - ELEVATION
(LAGGING @ TIEBACK NOT SHOWN)



VIEW A-A



SOLDIER PILE SECTION AT TIEBACK

- LEGEND**
- PORTIONS OF EXISTING STRUCTURE TO BE REMOVED, STAGE 2, PHASE C
 - PORTIONS OF EXISTING STRUCTURE TO BE REMOVED, STAGE 2, PHASE D

	UNBONDED LENGTH	
	TIEBACK "A"	TIEBACK "B"
R.A.	28.40'	20.09'
F.A.	32.58'	23.04'

- NOTES**
- FOR LEGEND OF ABBREVIATIONS SEE SHEET 4/56.
 - FOR ADDITIONAL TEMPORARY SHORING DETAILS AND NOTES SEE SHEET 9/56.
 - FOR REMOVAL DETAILS SEE SHEETS 11/56 THRU 14/56.
 - HEAVY EQUIPMENT AND MATERIAL STOCKPILES SHALL NOT BE LOCATED CLOSER TO THE WALL THAN THE WALL HEIGHT.
 - ALL STRUCTURAL STEEL INCLUDING SOLDIER PILES, AND ALL PLATES AND ANGLES SHALL BE ASTM, A709 GRADE 50.
 - ALL MATERIALS, EQUIPMENT, AND LABOR NECESSARY TO CONSTRUCT TEMPORARY SHORING AS DETAILED ON SHEETS 9/56 THRU 10/56 SHALL BE INCLUDED WITH ITEM 503, COFFERDAMS, CRIBS, AND SHEETING, AS PER PLAN.
- TIE BACK ANCHORS SHALL BE ASTM A722, TYPE II
- ANCHOR DESIGN LOAD = 193 K
ANCHOR PROOF LOAD = 256 K
ANCHOR LOCK-OFF LOAD = 193 K

SEQUENCE OF CONSTRUCTION - TEMPORARY SHORING

- STAGE 1, PHASE B**
STAGE 2, PHASE B
- INSTALL MOT AS REQUIRED (STAGE 2, PHASE B ONLY).
 - DRILL 3'-0" DIA. DRILLED SHAFT TO REQUIRED EMBEDMENT DEPTH AT EACH SOLDIER PILE LOCATION. PROVIDE CASING AS REQUIRED TO MAINTAIN THE HOLE.
 - INSTALL SOLDIER PILE AND PLACE CLASS S CONCRETE TO TOP OF DRILLED SHAFT ELEVATION.
 - FILL REMAINDER OF HOLE WITH LOW STRENGTH MORTAR OR CONCRETE. REMOVE CASING AS HOLE IS FILLED.
 - EXCAVATE ON FRONT FACE OF WALL TO 1'-6" BELOW TIEBACK ELEVATION. INSTALL LAGGING AS EXCAVATION PROCEEDS.
 - DRILL ANCHOR HOLES AND INSTALL TIEBACKS.
 - CONTINUE EXCAVATION TO TOP OF DRILLED SHAFT. INSTALL LAGGING AS EXCAVATION PROCEEDS.

STAGE 2, PHASE C AND D

- INSTALL MOT AS REQUIRED
- EXCAVATE DOWN TO EXISTING BEAM SEAT ELEVATION. INSTALL LAGGING AS EXCAVATION PROCEEDS. PHASE B LAGGING SHALL BE LEFT IN-PLACE EXCEPT AS NOTED.