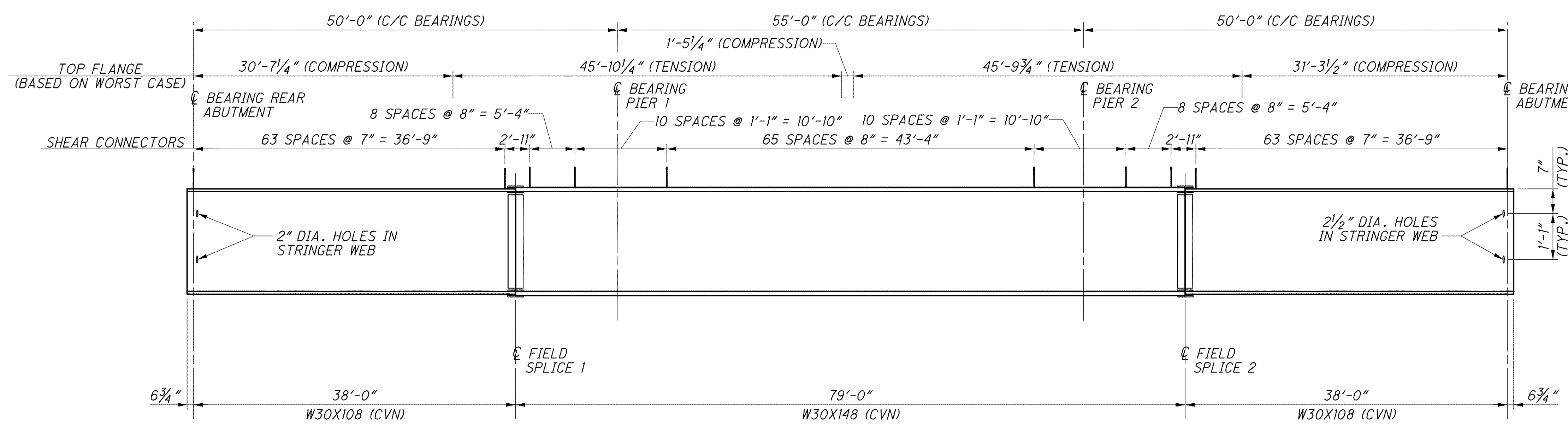
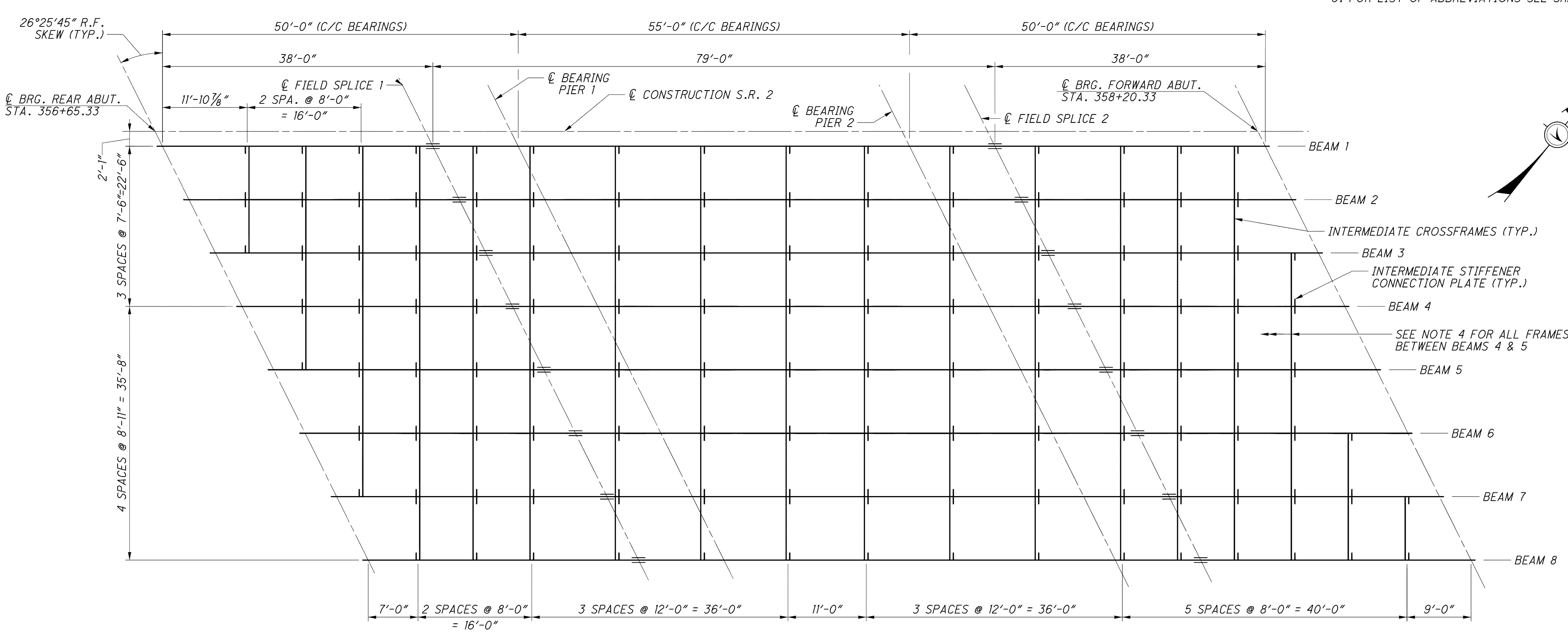


j:\LAK\13486\bridge\LAK002\_0486C\sheets\002\_0486CSD004.dgn 03-JUL-2008 1:43PM jintn



- NOTES:**
1. CVN: WHERE A SHAPE OR PLATE IS DESIGNATED (CVN), FURNISH MATERIAL THAT MEETS THE MINIMUM NOTCH TOUGHNESS REQUIREMENTS AS SPECIFIED IN 711.01.
  2. WELD ATTACHMENT OF SUPPORTS FOR CONCRETE DECK FINISHING MACHINE TO AREAS OF THE FASCIA STRINGER FLANGES DESIGNATED "COMPRESSION". DO NOT WELD ATTACHMENTS TO AREAS DESIGNATED "TENSION". FILLET WELDS TO COMPRESSION FLANGES SHALL BE AT LEAST 1" FROM EDGE OF FLANGE, BE NO MORE THAN 2" LONG, AND BE AT LEAST 1/4" FOR THICKNESSES UP TO 3/4" OR 5/16" FOR GREATER THAN 3/4" THICK.
  3. FOR CROSSFRAME DETAILS, SEE STANDARD DRAWING GSD-1-96, UNLESS NOTED OTHERWISE.
  4. PROVIDE CROSSFRAMES BETWEEN BEAMS 4 AND 5 AS PER STANDARD DRAWING GSD-1-96 USING  $\angle 3\frac{1}{2} \times 3\frac{1}{2} \times 3/8$ ".
  5. ALL STRUCTURAL STEEL SHALL BE PAINTED, EXCEPT FOR THE TOP OF THE TOP FLANGE OF THE BEAM. THIS SHALL INCLUDE THE BEAMS, CONNECTION PLATES, CROSS FRAMES, SPLICE PLATES, BEARING PLATES, ETC. ALL PAINTING SHALL BE AS PER ITEM 514 AND FEDERAL COLOR NUMBER 595B-15450 (LIGHT BLUE).
  6. FOR LIST OF ABBREVIATIONS SEE SHEET 4/70.



DESIGN AGENCY: PARSONS BRINCKERHOFF OUADE & DOUGLAS, INC. 614 W. SUPERIOR AVE., SUITE 400 CLEVELAND, OHIO 44113

|          |         |                       |                         |
|----------|---------|-----------------------|-------------------------|
| DESIGNED | P.J.L.  | CHECKED               | EBS                     |
| DRAWN    | L.E.L.  | REVISED               |                         |
| REVIEWED | R.J.O.  | STRUCTURE FILE NUMBER | 4300686 (L) 4300726 (R) |
| DATE     | 6-19-08 |                       |                         |

**EASTBOUND FRAMING PLAN AND BEAM ELEVATION**  
 BRIDGE NO. LAK-2-0486 L&R  
 STATE ROUTE 2 OVER ERIE ROAD

**LAK-2-3.32**  
 PID No. 13486

34/70

1426  
1679