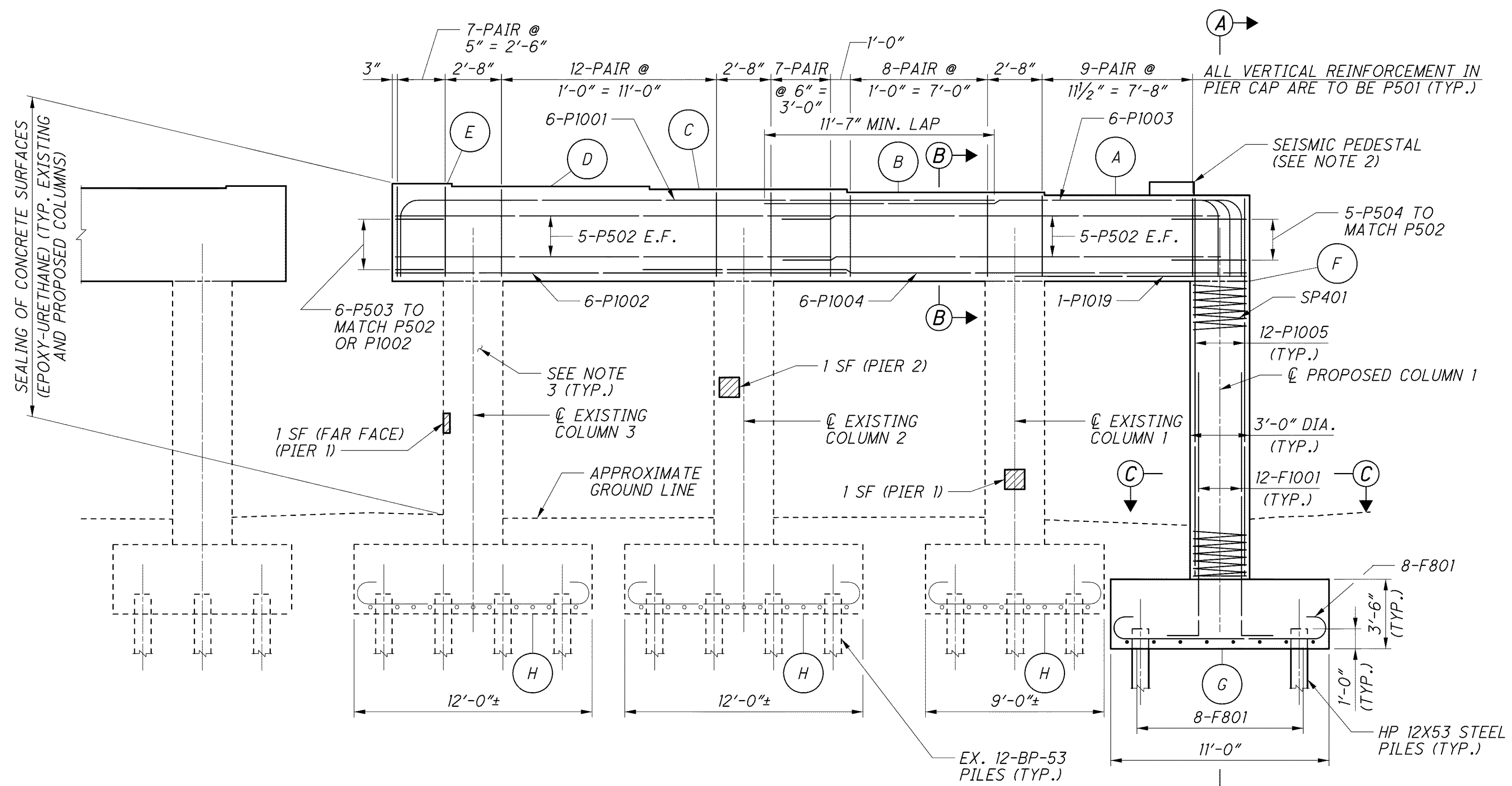


PLAN



ELEVATION

PIER 1 SHOWN  
PIER 2 SIMILAR

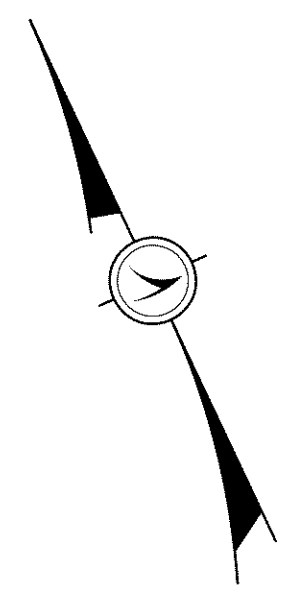
ELEVATION TABLE		
POINT	PIER 1	PIER 2
A	615.10	614.95
B	615.25	615.11
C	615.40	615.26
D	615.55	615.42
E	615.69	615.56
F	610.77±	610.77±
G	592.00	592.00
H	594.0±	594.0±

NOTES:

- MINIMUM BAR LAPS:  
#10 BARS = 10'-3"  
# 5 BAR = 2'-5"  
(UNLESS NOTED OTHERWISE)
- FOR PIER SECTIONS AND SEISMIC PEDESTAL DETAILS SEE SHEET 33/70.
- ALL VERTICAL REINFORCING STEEL FROM THE EXISTING COLUMNS SHALL REMAIN IN PLACE AND BE CUT TO 4" BELOW THE TOP OF THE CAP.
- FOR LIST OF ABBREVIATIONS SEE SHEET 4/70.

LEGEND:

- ITEM 519 - PATCHING CONCRETE STRUCTURES



j:\LAK\13486\bridge\LAK002\_0486\c\_sheets\002\_0486CPI001.dgn 03-JUL-2008 1:42PM imtn