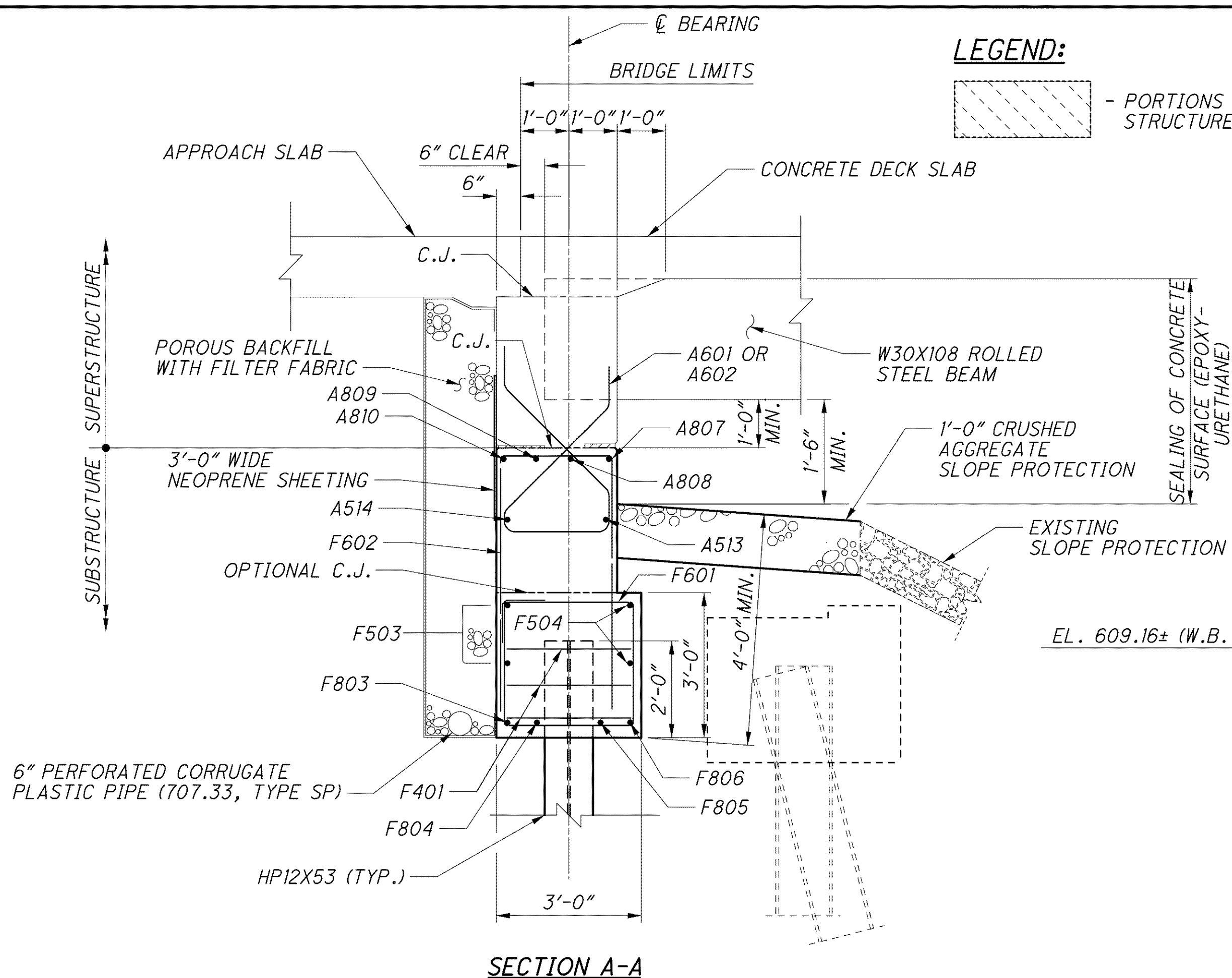
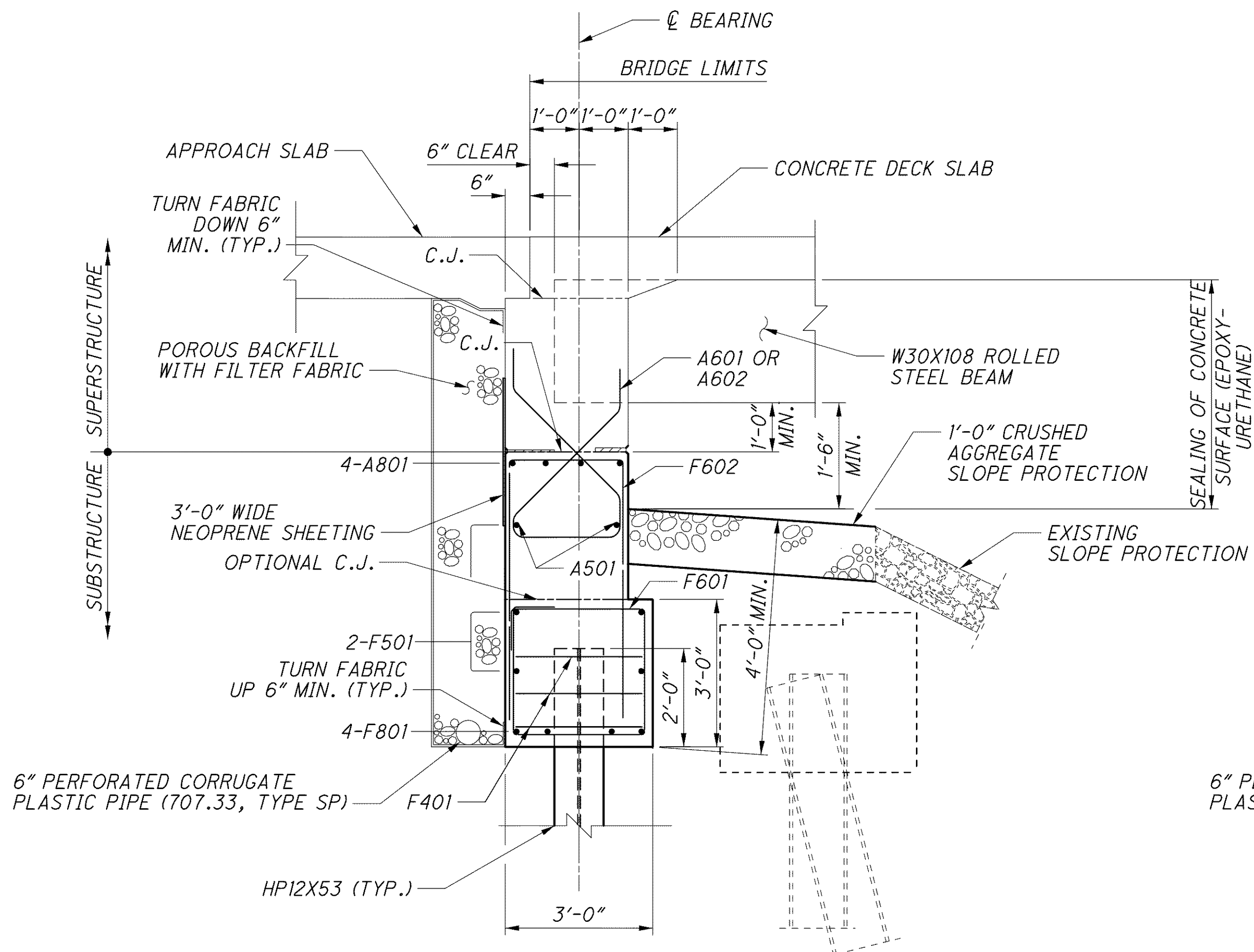


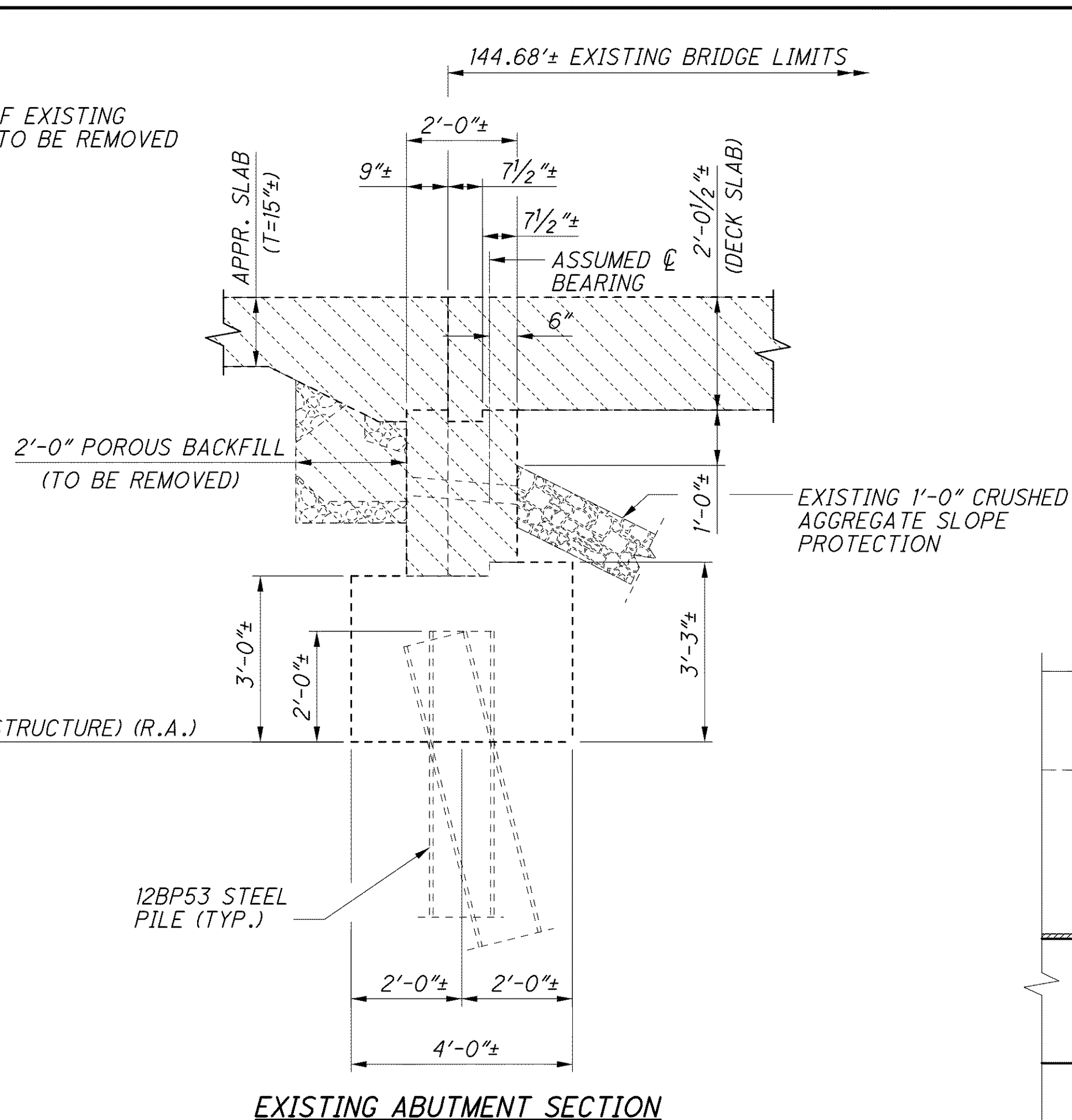
J:\LAK\13486\bridge\LAK002_0486C\sheets\02_0486CAR006.dgn 03-JUL-2008 1:41PM Inth



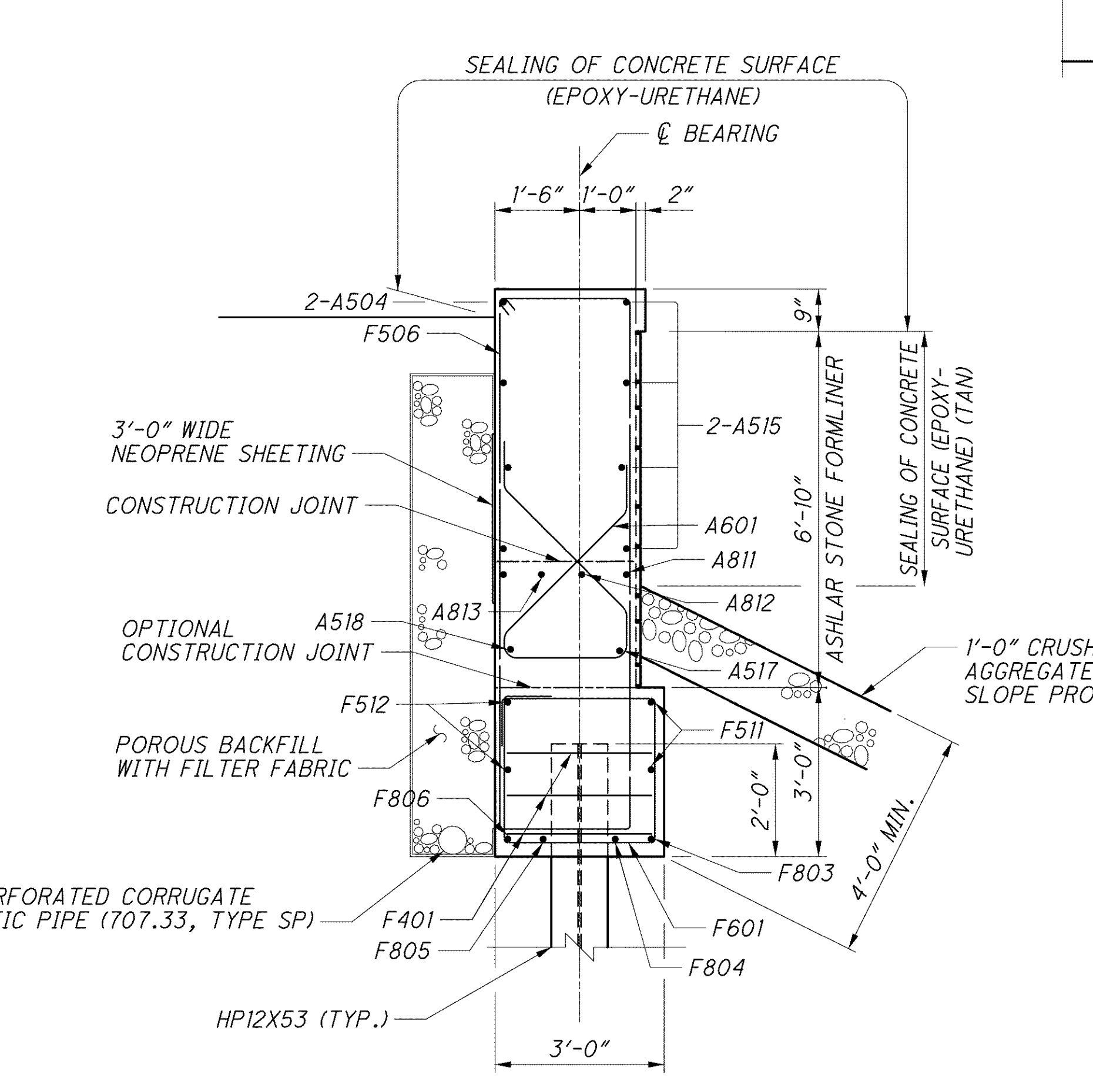
SECTION A-A



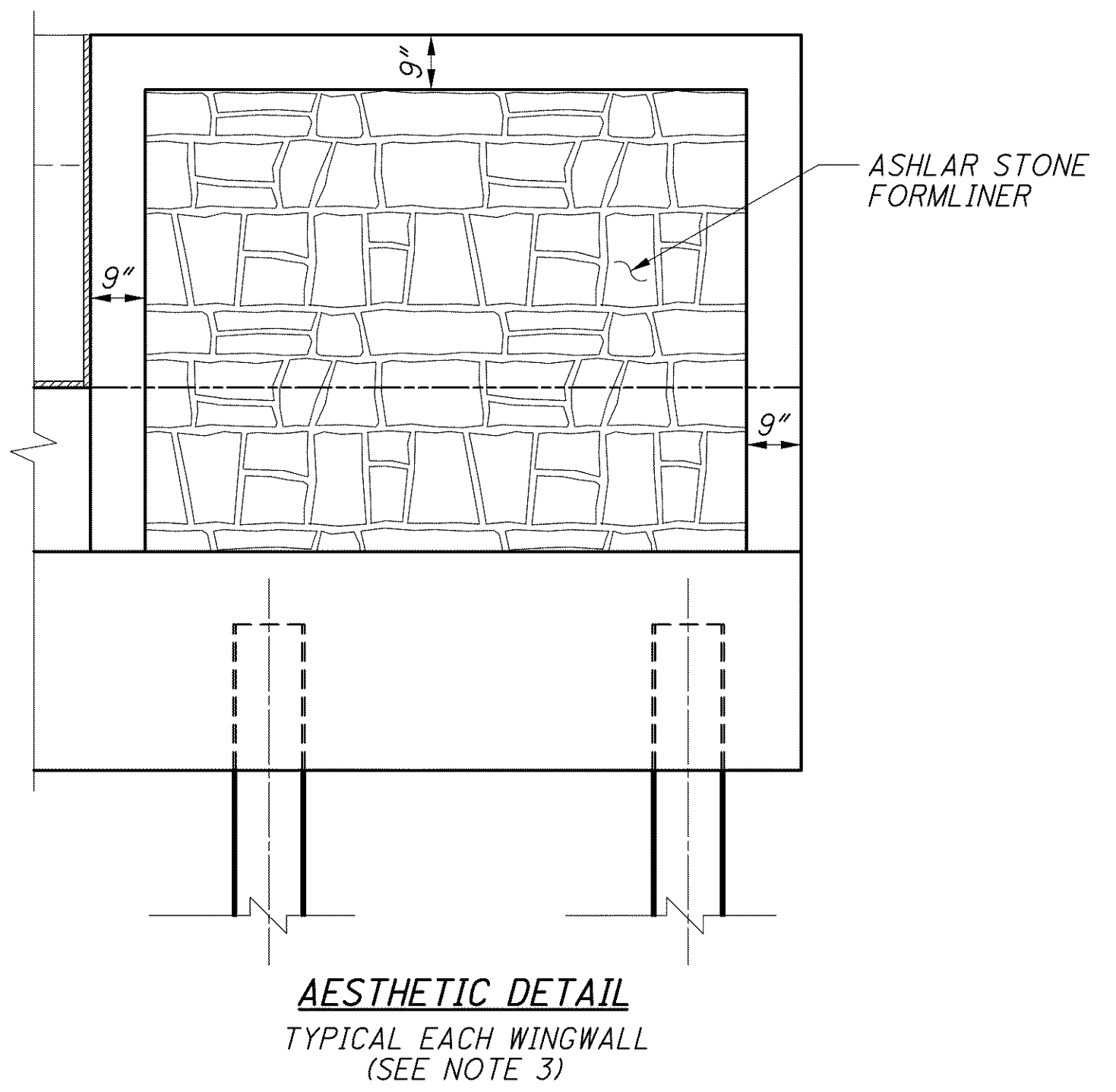
SECTION B-B



EXISTING ABUTMENT SECTION

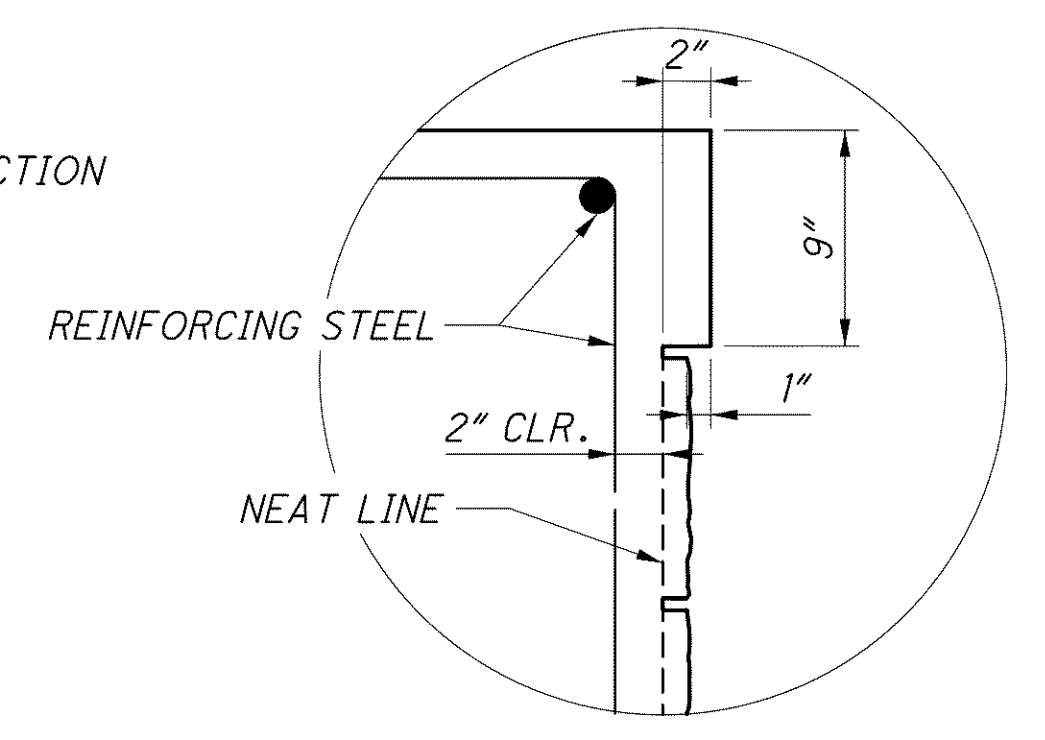


SECTION C-C



NOTES:

1. POROUS BACKFILL WITH FILTER FABRIC, 2 FEET THICK SHALL EXTEND UP TO THE PLANE OF THE SUBGRADE, TO 1 FOOT BELOW THE EMBANKMENT SURFACE, AND Laterally TO THE ENDS OF THE WINGWALLS.
2. TYPE 2 WATERPROOFING SHALL BE CENTERED VERTICALLY OVER PHASE CONSTRUCTION JOINTS AND EXTENDED FROM THE TOP OF WALL DOWN TO THE TOP OF FOOTING.
3. PROVIDE ITEM 512 SEALING OF CONCRETE SURFACES EPOXY-URETHANE, FEDERAL COLOR NUMBER (TAN) FOR ALL AREAS TREATED WITH ASHLAR STONE FORMLINER.
4. FOR LIST OF ABBREVIATIONS SEE SHEET 4/70.



DETAIL D

DESIGN AGENCY
**PARSONS BRINCKERHOFF
QUADE & DOUGLAS, INC.**
614 W. SUPERIOR AVE., SUITE 400
CLEVELAND, OHIO 44113

DATE	6-19-08
REVIEWED	RJO
DRAWN	BKJ
DESIGNED	P.JL
CHECKED	EBS
STRUCTURE FILE NUMBER	4300696 (L) 4300726 (R)

WESTBOUND REAR ABUTMENT DETAILS
BRIDGE NO. LAK-2-0486 L&R
STATE ROUTE 2 OVER ERIE ROAD

LAK-2-3.32
PID No. 13486

25/70

1417
1679