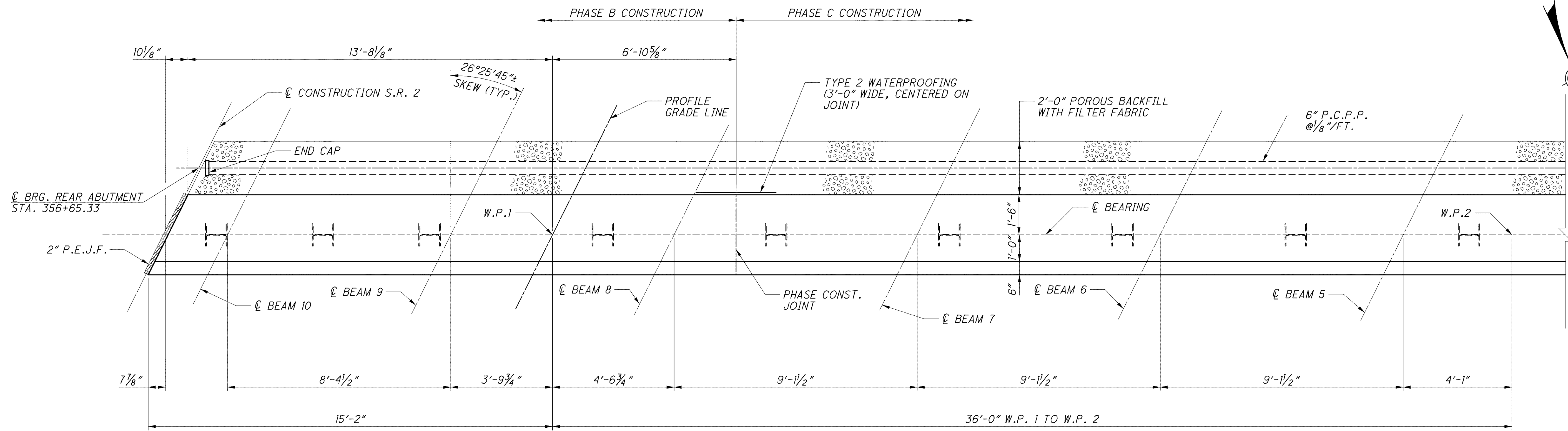


J:\LAK\13486\bridge\LAK002_0486C\sheets\02_0486CAR003.dgn 03-JUL-2008 1:41PM intrn



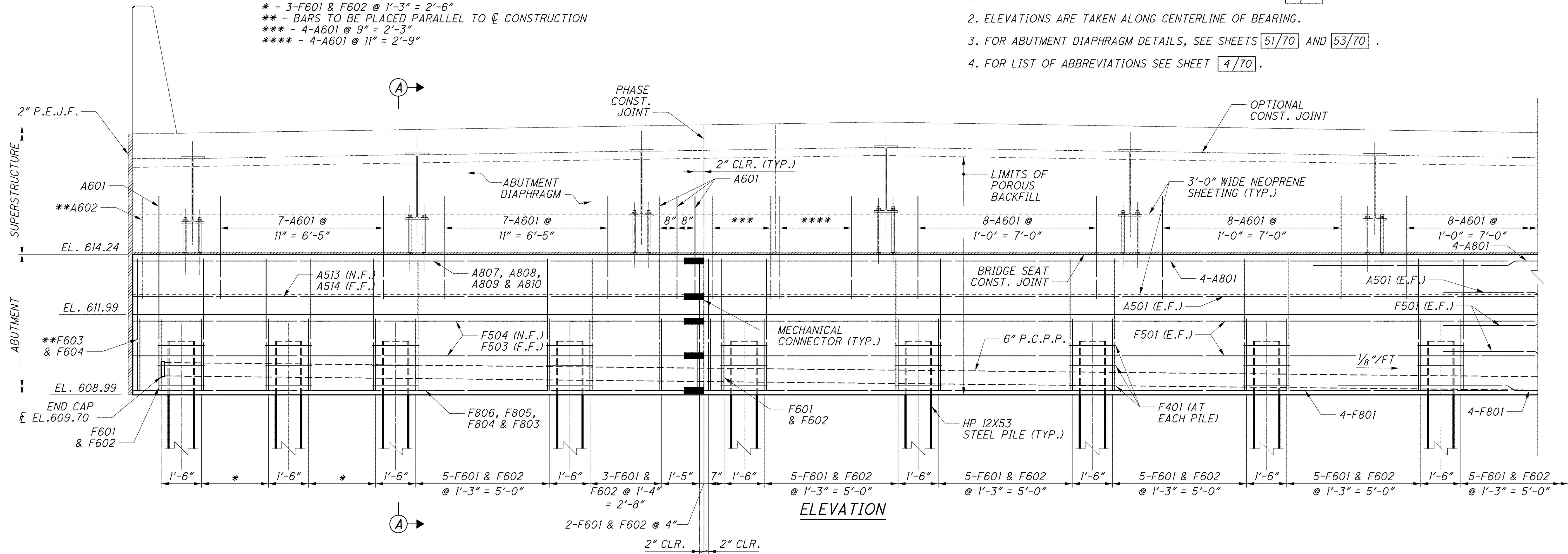
PLAN

LEGEND:

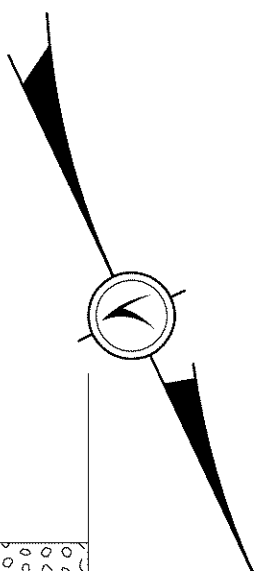
- * - 3-F601 & F602 @ 1'-3" = 2'-6"
- ** - BARS TO BE PLACED PARALLEL TO \varnothing CONSTRUCTION
- *** - 4-A601 @ 9" = 2'-3"
- **** - 4-A601 @ 11" = 2'-9"

NOTES:

1. FOR SECTION A-A AND ADDITIONAL NOTES SEE SHEET 25/70.
2. ELEVATIONS ARE TAKEN ALONG CENTERLINE OF BEARING.
3. FOR ABUTMENT DIAPHRAGM DETAILS, SEE SHEETS 51/70 AND 53/70.
4. FOR LIST OF ABBREVIATIONS SEE SHEET 4/70.



ELEVATION



DESIGN AGENCY
PARSONS BRINCKERHOFF
 OUADE & DOUGLAS, INC.
 614 W. SUPERIOR AVE., SUITE 400
 CLEVELAND, OHIO 44113

DESIGNED	P.J.L.	CHECKED	EBS
DRAWN	L.E.L.	REVISED	
REVIEWED	R.J.O.	STRUCTURE FILE NUMBER	4300686 (L) 4300726 (R)
DATE	6-19-08		

WESTBOUND REAR ABUTMENT 1 OF 2
 BRIDGE NO. LAK-2-0486 L&R
 STATE ROUTE 2 OVER ERIE ROAD

LAK-2-3.32
 PID No. 13486