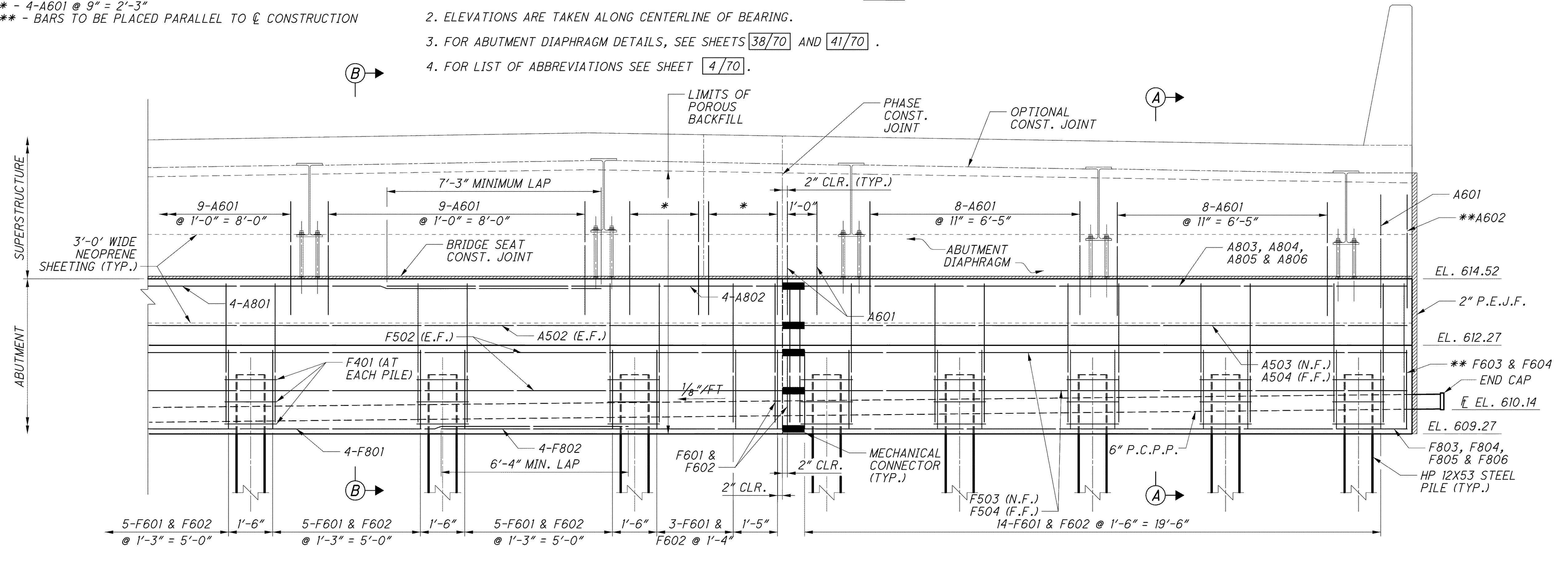


LEGEND:
 * - 4-A601 @ 9" = 2'-3"
 ** - BARS TO BE PLACED PARALLEL TO \bar{C} CONSTRUCTION

NOTES:
 1. FOR SECTION A-A, SECTION B-B AND ADDITIONAL NOTES SEE SHEET 19/70.
 2. ELEVATIONS ARE TAKEN ALONG CENTERLINE OF BEARING.
 3. FOR ABUTMENT DIAPHRAGM DETAILS, SEE SHEETS 38/70 AND 41/70.
 4. FOR LIST OF ABBREVIATIONS SEE SHEET 4/70.

PLAN



ELEVATION

J:\LAK\13486\bridge\LAK002_0486C\sheets\002_0486CAR002.dgn 03-JUL-2008 1:40PM lintn

DATE	6-19-08
REVIEWED	RJO
DRAWN	LEL
DESIGNED	P.JL
CHECKED	EBS
REVISED	
STRUCTURE FILE NUMBER	4300696 (L) 4300726 (R)