

ITEM 516 INTEGRAL ABUTMENT EXPANSION JOINT SEAL, AS PER PLAN

INSTALL A 3 FOOT WIDE NEOPRENE SHEET AT LOCATIONS SHOWN IN THE PLANS. SECURE THE NEOPRENE SHEETING TO THE CONCRETE WITH 1-1/4" X #10 GAGE (LENGTH X SHANK DIAMETER) GALVANIZED BUTTON HEAD SPIKES THROUGH A 1 INCH OUTSIDE DIAMETER, #10 GAGE GALVANIZED WASHER. MAXIMUM FASTENER SPACING IS 9 INCHES. USE OF OTHER SIMILAR GALVANIZED DEVICES, WHICH WILL NOT DAMAGE EITHER THE NEOPRENE OR THE CONCRETE WILL BE SUBJECT TO THE APPROVAL OF THE ENGINEER.

CENTER THE NEOPRENE STRIPS ON ALL JOINTS. FOR HORIZONTAL JOINTS, SECURE THE HORIZONTAL NEOPRENE STRIP BY USING A SINGLE LINE OF FASTENERS, STARTING AT 6 INCHES, +/-, FROM THE TOP OF THE NEOPRENE STRIP. FOR THE VERTICAL JOINTS SECURE THE VERTICAL NEOPRENE STRIP BY USING A SINGLE VERTICAL LINE OF FASTENERS, STARTING AT 6 INCHES, +/-, FROM THE VERTICAL EDGE OF THE NEOPRENE STRIP NEAREST TO THE CENTERLINE OF ROADWAY. FOR VERTICAL JOINTS, INSTALL 2 ADDITIONAL FASTENERS AT 6 INCHES, CENTER TO CENTER, ACROSS THE TOP OF THE NEOPRENE STRIP ON THE SAME SIDE OF THE VERTICAL JOINT AS THE SINGLE VERTICAL ROW OF FASTENERS IS LOCATED.

THE VERTICAL NEOPRENE STRIPS SHALL COMPLETELY OVERLAP THE HORIZONTAL STRIPS. LAP LENGTHS OF THE HORIZONTAL STRIPS THAT ARE NOT VULCANIZED OR ADHESIVE BONDED, SHALL BE AT LEAST 1 FOOT IN LENGTH, OR 6 INCHES IN LENGTH IF THE LAP IS VULCANIZED OR ADHESIVE BONDED. NO LAPS ARE ACCEPTABLE IN VERTICALLY INSTALLED NEOPRENE STRIPS. THE NEOPRENE SHEETING SHALL BE 3/32" THICK GENERAL PURPOSE, HEAVY DUTY NEOPRENE SHEET WITH NYLON FABRIC REINFORCEMENT. THE SHEETING SHALL BE "FAIRPRENE NUMBER NN-0003", BY E. I. DUPONT DE NEMOURS AND COMPANY, INC., "WINGPRENE" BY THE GOODYEAR TIRE AND RUBBER COMPANY, OR AN APPROVED ALTERNATE. THE NEOPRENE SHEETING SHALL CONFORM TO THE FOLLOWING:

DESCRIPTION OF TEST	ASTM METHOD	REQUIREMENT
THICKNESS, INCHES	D751	0.094 +/- 0.01
BREAKING STRENGTH, GRAB, LBS, MINIMUM (LONG. X TRANS.)	D751	700 X 700
ADHESIVE STRIP, 1" WIDE X 2" LONG, LBS MINIMUM	D751	9
BURST STRENGTH, PSI MINIMUM	D751	1400
HEAT AGING, 70 HR, 212 DEGREES F, 180 DEGREES BEND WITHOUT CRACKING	D2136	NO CRACKING OF COATING
LOW TEMP. BRITTLENESS, 1 HR, -40 DEGREES F, BEND AROUND 1/4" MANDREL	D2136	NO CRACKING OF COATING

METHOD OF MEASUREMENT: THE DEPARTMENT WILL MEASURE THE TOTAL LENGTH OF JOINT TO BE SEALED BY THE NUMBER OF FEET.

BASIS OF PAYMENT: THE DEPARTMENT WILL PAY FOR ACCEPTED QUANTITIES AT THE CONTRACT PRICE FOR ITEM 516, INTEGRAL ABUTMENT EXPANSION JOINT SEAL, AS PER PLAN.

ITEM 509 REINFORCING STEEL, REPLACEMENT OF EXISTING REINFORCING STEEL, AS PER PLAN

REPLACE ALL EXISTING REINFORCING BARS DEEMED BY THE ENGINEER TO BE UNUSABLE BECAUSE OF CORROSION. THE DEPARTMENT WILL MEASURE THE REPLACEMENT REINFORCING STEEL BY THE NUMBER OF POUNDS ACCEPTED IN PLACE.

REPLACE ALL EXISTING REINFORCING STEEL BARS WHICH ARE TO BE INCORPORATED INTO THE NEW WORK AND ARE DEEMED BY THE ENGINEER TO BE MADE UNUSABLE BY CONCRETE REMOVAL OPERATIONS WITH NEW EPOXY COATED REINFORCING STEEL OF THE SAME SIZE AT NO COST TO THE DEPARTMENT.

ITEM 509 - EPOXY COATED REINFORCING STEEL, AS PER PLAN

IN ADDITION TO THE PROVISIONS OF ITEM 509, FIELD BEND AND/OR FIELD CUT THE REINFORCING STEEL DESIGNATED IN THE PLANS, AS NECESSARY, IN ORDER TO MAINTAIN THE REQUIRED CLEARANCES AND BAR SPACINGS. REPAIR ALL DAMAGE TO THE EPOXY COATING, AS A RESULT OF THIS WORK, ACCORDING TO 709.00.

MAINTENANCE OF TRAFFIC

FOR MAINTENANCE OF TRAFFIC NOTES AND DETAILS, REFER TO SHEETS 85 THRU 185.

ABBREVIATIONS:

- | | |
|-------------------------|---|
| N.F. = NEAR FACE | P.F.J. = PRECOMPRESSED FOAM JOINT |
| F.F. = FAR FACE | P.E.J.F. = PREFORMED EXPANSION JOINT FILLER |
| E.F. = EACH FACE | P.C.P.P. = PERFORATED CORRUGATED PLASTIC PIPE |
| TYP. = TYPICAL | N.P.C.P.P. = NON-PERFORATED CORRUGATED PLASTIC PIPE |
| MIN. = MINIMUM | INV. = INVERT |
| STA. = STATION | EL. = ELEVATION |
| SPA. = SPACES | FWD. = FORWARD |
| CONST. = CONSTRUCTION | ABUT. = ABUTMENT |
| EL. = ELEVATION | CONC. = CONCRETE |
| C.I.P. = CAST-IN-PLACE | EA. = EACH |
| BRG. = BEARING | STD. = STANDARD |
| EX. = EXISTING | DWG. = DRAWING |
| PROP. = PROPOSED | DIA. = DIAMETER |
| A.P.P. = AS PER PLAN | E.B. = EASTBOUND |
| R.A. = REAR ABUTMENT | W.B. = WESTBOUND |
| F.A. = FORWARD ABUTMENT | W.P. = WORK POINT |
| O/O = OUT TO OUT | C/C = CENTER TO CENTER |
| CLR. = CLEAR | STRUCT. = STRUCTURE |
| LT. = LEFT | TEMP. = TEMPORARY |
| RT. = RIGHT | C.J. = CONSTRUCTION JOINT |
| EST. = ESTIMATE | |

ITEM 512, SEALING OF CONCRETE SURFACES (EPOXY-URETHANE), AS PER PLAN

SEALING SHALL COVER ALL THE EXPOSED SURFACES OF ABUTMENTS FOR THE TOTAL WIDTH OF ABUTMENTS INCLUDING WINGWALLS. SEALING SHALL COVER ALL THE EXPOSED SURFACES OF PIERS FOR THE TOTAL WIDTH OF PIERS EXCEPT FOR THE TOP SURFACE OF THE PIER CAP.

ALL SEALING OF CONCRETE SURFACES SHALL BE EPOXY-URETHANE AND COLOR OF THE URETHANE TOP COAT SHALL BE FEDERAL COLOR NO. 595B-27722 (BUFF). (UNLESS NOTED OTHERWISE). PROVIDE ITEM 512 SEALING OF CONCRETE SURFACES EPOXY-URETHANE, FEDERAL COLOR NUMBER 595B-26306 (TAUPE SEMIGLOSS) FOR ALL AREAS TREATED WITH ASHLAR STONE FORMLINER.

REINFORCED CONCRETE APPROACH SLABS (T=15"), AS PER PLAN

ALL MATERIAL (INCLUDING REINFORCING STEEL) AND LABOR NEEDED TO CONSTRUCT THE REINFORCED CONCRETE PARAPETS DIRECTLY ATTACHED TO THE APPROACH SLAB ARE TO BE INCLUDED WITH THE PRICE BID FOR REINFORCED CONCRETE APPROACH SLABS (T=15"), AS PER PLAN.

PRECOMPRESSED FOAM JOINT

DESCRIPTION: THIS WORK WILL CONSIST OF THE INSTALLATION OF A PRE-COMPRESSED FOAM JOINT BETWEEN CONCRETE PARAPETS/BARRIERS AT THE BEGINNING AND END OF APPROACH SLABS. THE WORK SHALL BE PERFORMED IN ACCORDANCE WITH THE MANUFACTURER'S SPECIFICATIONS AND RECOMMENDATIONS, OR AS DIRECTED BY THE ENGINEER. THE PRE-COMPRESSED FOAM JOINT FILLER SHALL COMPLETELY FILL THE GAP BETWEEN THE PARAPETS/BARRIERS.

THE MATERIAL SHALL BE A PRE-COMPRESSED FOAM JOINT FILLER SUCH AS ONE OF THE FOLLOWING OR AN APPROVED EQUAL:

SEALTITE STANDARD
SCHUL INTERNATIONAL CO.
ONE INDUSTRIAL PARK DRIVE
PELHAM, N.H. 03076
1-800-848-1120

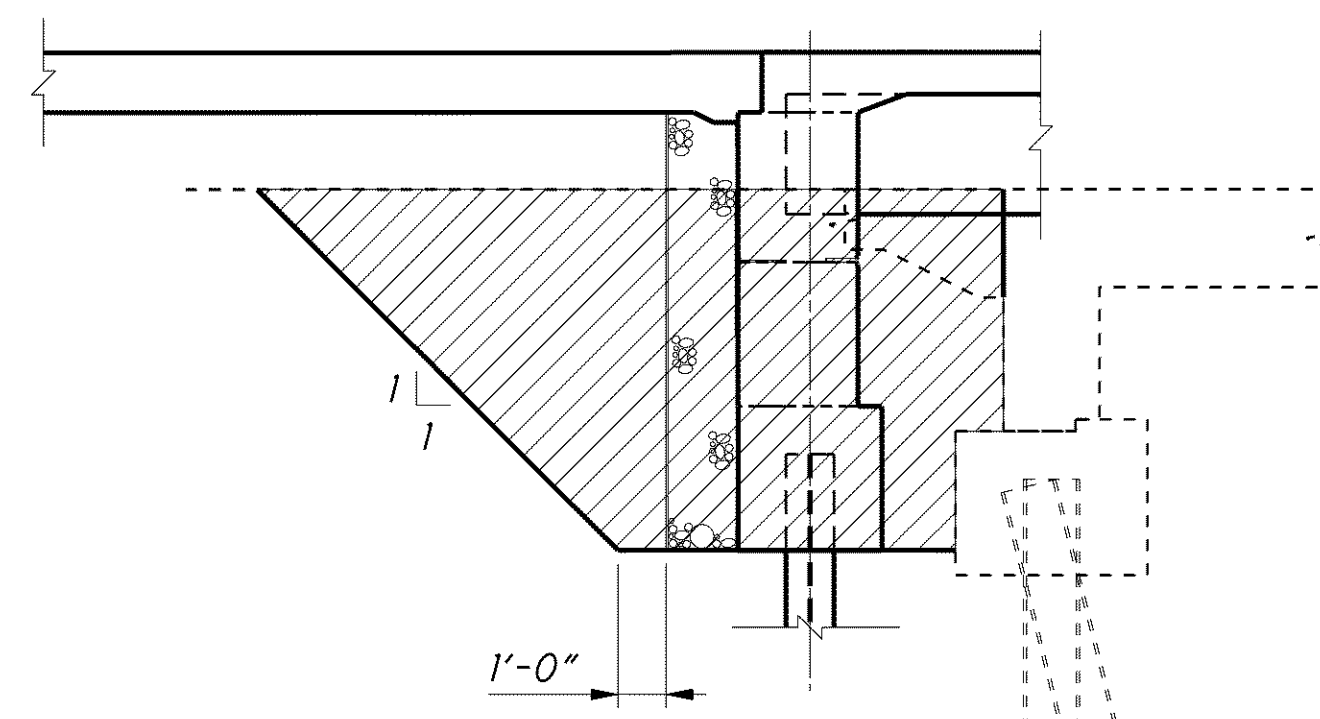
EMSEAL DSM SYSTEM
EMSEAL JOINT SYSTEMS (II)
23 BRIDLE LANE,
SUITE 3
WESTBOROUGH, MA 01581
1-800-526-8365

POLYTITE B
DAYTON SUPERIOR
7777 WASHINGTON VILLAGE DR.,
SUITE 130
DAYTON, OH 45459
1-888-977-9600

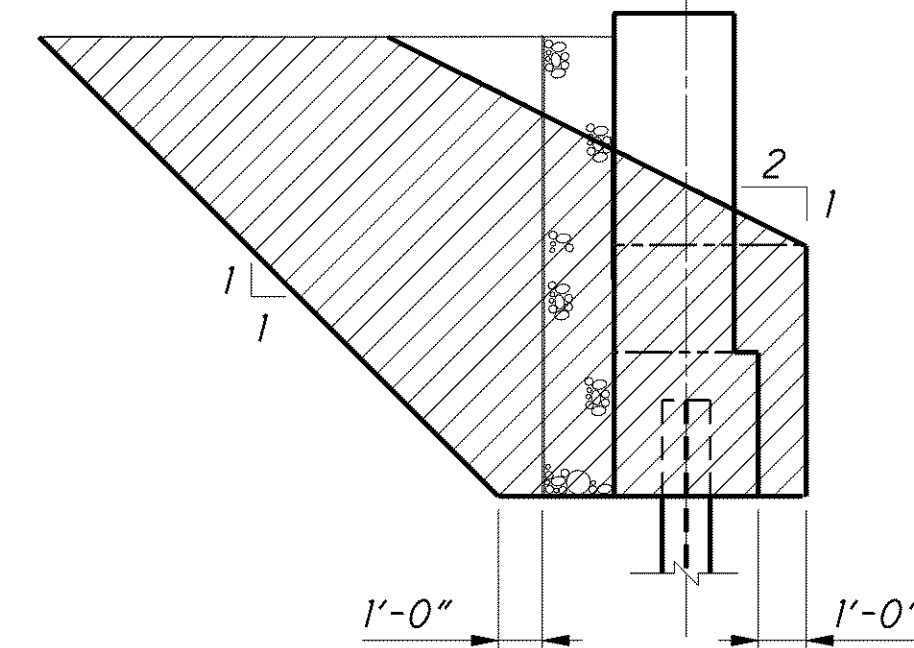
PAYMENT FOR LABOR, MATERIALS AND INSTALLATION OF THIS ITEM SHALL BE INCLUDED WITH ITEM 526, REINFORCED CONCRETE APPROACH SLABS, AS PER PLAN.

ITEM 518 - 6" NON-PERFORATED CORRUGATED PLASTIC PIPE, INCLUDING SPECIALS, AS PER PLAN

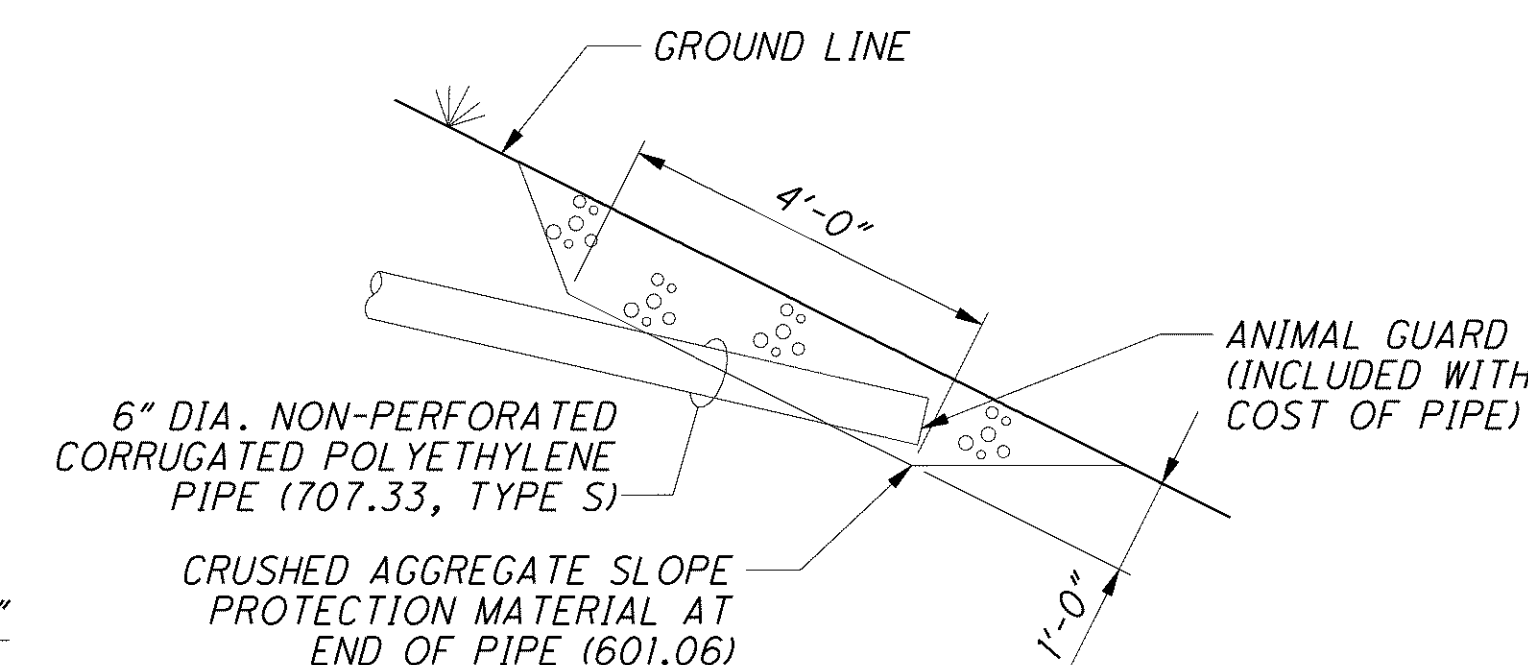
ANIMAL GUARDS SHALL BE PROVIDED AT THE OUTLET OF THE DRAINAGE PIPES, STEEL BOLTS OR RODS FOR THE ANIMAL GUARDS SHALL BE GALVANIZED PER CMS 711.02. SEE STD DWG. DM 1.1 FOR ADDITIONAL DETAILS AND NOTES. THE ANIMAL GUARDS AND CRUSHED AGGREGATE SLOPE PROTECTION ARE INCIDENTAL TO ITEM 518 - 6" NON-PERFORATED CORRUGATED PLASTIC PIPE, INCLUDING SPECIALS, AS PER PLAN.



EXCAVATION AT ABUTMENT



EXCAVATION AT WINGWALL



TERMINATION OF 6" NON-PERFORATED CORRUGATED PLASTIC PIPE (N.P.C.P.P.)

COLORS AND SURFACE TREATMENTS

- A. SEAL WITH EPOXY-URETHANE SEALER, BUFF COLOR, FCN 595B-27722
- B. TEXTURED SURFACES - ASHLAR STONE FORMLINER:
SEAL WITH EPOXY URETHANE SEALER, TAUPE SEMIGLOSS COLOR, FCN 595B-26306

G:\Project\lak\13486\bridge\lak002_0486C\sheets\002_0486CGN002.dgn 8/7/2008 3:26:50 PM djozily

DESIGN AGENCY
PARSONS BRINCKERHOFF
QUADE & DOUGLAS, INC.
614 W. SUPERIOR AVE., SUITE 400
CLEVELAND, OHIO 44113

DATE	7/7/77
REVIEWED	RJO
DRAWN	LEL
DESIGNED	P.JL
CHECKED	EBS
STRUCTURE FILE NUMBER	4300696 (L) 4300726 (R)

GENERAL NOTES
BRIDGE NO. LAK-2-0486 L&R
STATE ROUTE 2 OVER ERIE ROAD

LAK-2-3.32
PID No. 13486
4/70
1396
1679